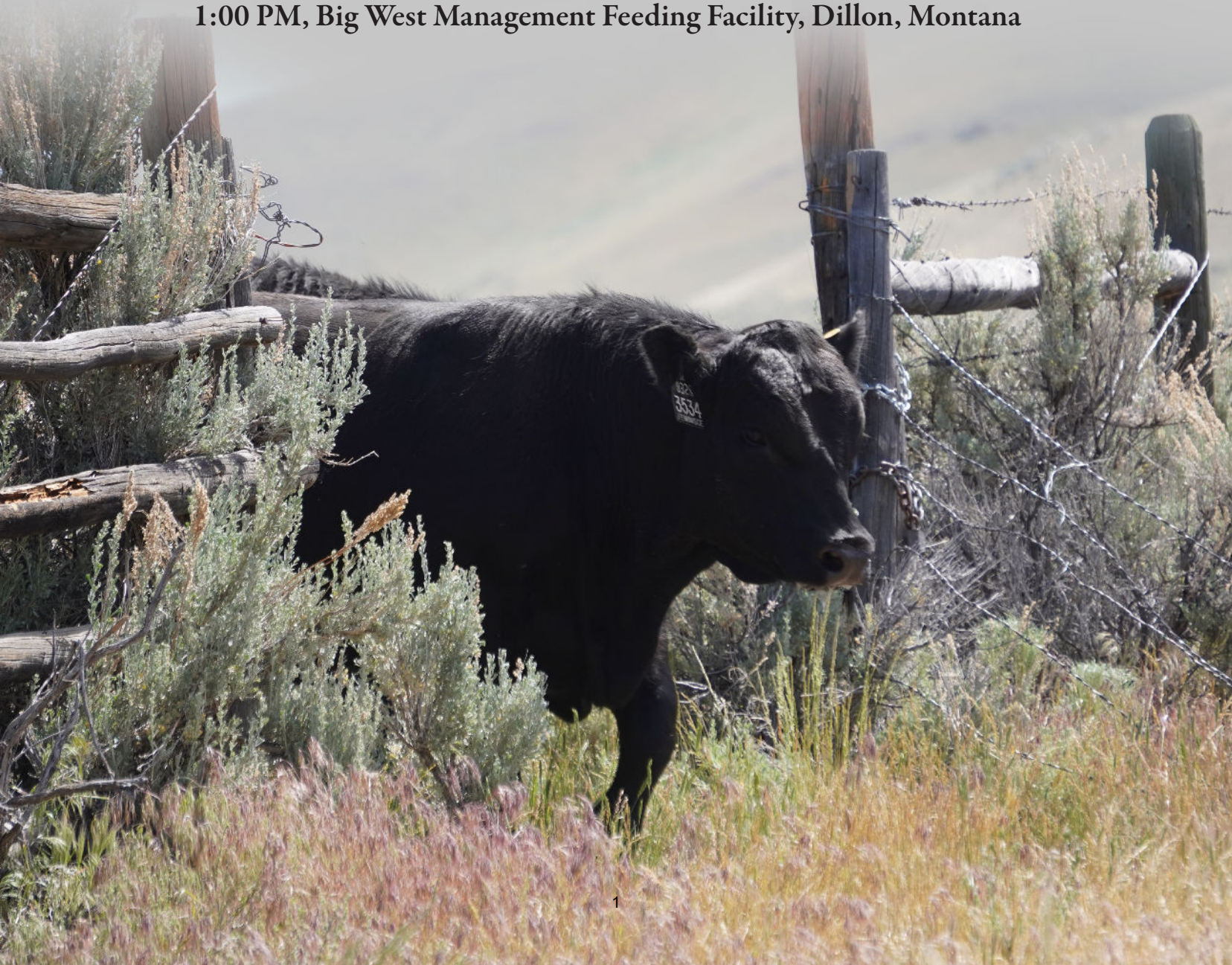




Annual Production Sale
MARCH 6, 2026

1:00 PM, Big West Management Feeding Facility, Dillon, Montana

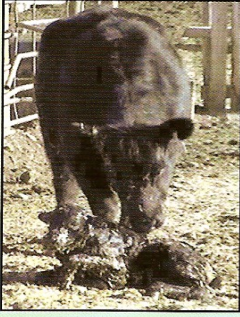


Calving Ease

Fertility

Maternal

Feedyard Performance



R

REMINISCE ANGUS RANCH

Bryan and Marcia Mussard

(406) 925-1416* Dillon, MT * bryanmussard406@gmail.com

170 Head 20-MONTH OLD ANGUS BULLS

60 Head Commercial Angus Heifers - 100% Reminisce Genetics

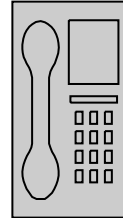
21 Head Commercial Angus 3yr old Cows - AI bred

Friday, March 6th, 2026 @ 1:00 PM

Big West Management Cattle Feeding Facility

Dillon, Montana

AUCTIONEER: Roger Jacobs (406) 698-7686



RINGMEN:

Jeff Thomas, Prairie Star (406) 581-8859

Kurt Kangus, American Angus Assoc. (406) 366-4190

Andy Rest - Cattle Business Weekly (406) 670-5678

SALE DAY PHONES

(406) 925-1416 Bryan

(406) 925-1417 Marcia

(406) 925-0526 Talitha

(406) 490-3263 Jill

(406) 683-6363 Office

DELIVERY - FREE delivery In-State or up to 500 miles. We will be happy to assist you in making delivery arrangements. Delivery Discount - Haul your own, \$100 per bull within three days of the sale date, to be deducted at the time of purchase. Please make all qualifying FREE delivery arrangements at time of purchase.

BOARD - No charge until March 31st, 2026. Effective April 1st, 2026, all feed charges will become the responsibility of the purchaser, a current cost of \$100 per month will be added to the purchase price. Please make arrangements for Board at time of purchase.

DISCOUNTS - Available only on individual lots \$5500 or above

Volume Purchases: 5 to 9 Bulls - 5% Discount on qualifying bulls

10+ Bulls - 10% Discount on qualifying bulls

BIDS/SIGHT UNSEEN GUARANTEE - If you are unable to attend the sale, please call us, and we will assist you with your order - We offer a sight unseen satisfaction guarantee; we enjoy and pride ourselves on providing you with the best possible bull to fit your program needs, however, If you don't like 'Em when you see 'Em, you don't own 'Em.

ANNOUNCEMENTS - A supplemental update sheet will be available on sale day. Announcements from the block take precedent over information contained in this catalog. Reminisce Angus bulls are bred and developed for the commercial cattle industry, as well these bulls sell with registration papers. Reminisce Angus will retain a 1/2 semen revenue sharing interest. Full possession and full salvage value sells with all bulls. Complimentary Pre-sale lunch at noon, please join us.

TERMS AND CONDITIONS - All bulls sell according to the standard terms and conditions of the American Angus Association. Terms are cash.

CONDITIONING: Reminisce Angus bulls are bred and raised in Beaverhead County. They have been maintained on a complete health program starting at birth, preweaning, weaning and yearling. We have done extensive BVD testing at Reminisce Angus—all tests have been negative for PI's (persistently infected carriers). All bulls have been developed and maintained on a 41 MegaCal/lb gain high roughage ration at the Big West Management cattle feeding facility in Dillon. Fertility testing, breeding soundness exam, and scrotal measurements have been completed. The bulls may be viewed at Big West Management's cattle feeding facility.

WARRANTY— The seller guarantees that all bulls have passed a breeding and soundness exam. Insurance is available, please review the Coverage Summary of Bull Mortality statement. All bulls are guaranteed for the first breeding season (60-day period following the first turnout) due to genetic and/or structural defects, not including injuries. Please feel free to contact us about any and all injuries. We take care of our customers. Seller will provide a suitable replacement if available, or purchaser will receive full credit, minus the salvage value of the original purchase price towards the purchase of a bull in the next Reminisce Angus sale. We would like to encourage all buyers to consider purchasing MORTALITY insurance offered the day of the sale. Please feel free to contact us at any time, prior to September 1st, 2026.



Dear Friends,

We can only hope that Reminisce Angus presents the highest level of customer service beyond our genetics, beyond the breed, beyond the industry and recognizable by consuming Americans across the country. Your success keeps rural America thriving with small businesses and active, one room schoolhouses.

We have dedicated the last three years of our time bringing “Saturated Fat” to the national conversation through Secretary Kennedy and it is now center stage. For the first time ever, beef tallow is now recommended in the dietary guidelines! The world now must finally recognize the lie that has devastated Rural America and created chronic illness and begin to reconstruct these two with healthy, high marbling beef in the center of the plate!

While this has taken up our spare time, we continue to lead the industry “Back to the Future” with our **Extreme Middle** genetic solutions. We have listened to commercial producers for over 30 years now, talk about moderation. However, either they did not mean it, or the industry ignored it. As I glance through every semen catalog, I see the WW and YW continue to climb higher and higher every year, and producers continue to use bulls with higher numbers. This is as confusing as Fruit Loops at the top of the food pyramid.

We have never AIed to a bull over 100 for YW EPD. We breed as much WW into our herd as we can, by using the highest indexing bulls in our herd. This has resulted in what you will see in this book as “over and under” performance EPDs; which means over 50 WW and under 100YW. This combination continues to grow here at Reminisce. You can keep the biggest heifers for replacements IF you have a true moderate program with a lid on YW.

We also talk a lot about our older cows, marbling and the correlation to longevity. It’s real. What you need to know is that good bulls in this sale with low performance EPDs are progeny of several generations of old cows with longevity. The industry needs to recognize and bless these good cows rather than discard them, numerically when they produce past 6 years of age. We do not sell them when they begin to fail on paper. It is only then that we start watching them bloom into great ones!

Join us for a fine day this year as we present another complete set of uniform bulls, developed for longevity, a fine Reminisce Angus Beef steak lunch, Gorgeous toddy’s, good cigars and time to visit!

Sincerely,
Bryan, Marcia and
the whole Reminisce Crew!



Buyer Pre-Sale Luncheon
Friday, March 6th @ 11:30 am
Big West Management Sale Barn

**Thank you for coming, please stay and
enjoy a Gorgeous toddy,
Reminisce Angus Ranch specialty meat
snacks and a Cattle Baron cigar with us
after the sale.**





Individual Lot Videos available!
Reminisce Angus website
www.remangusranch.com
www.frontierlivesale.com



Reminisce Angus Customer Feedback

- Mother Cows
- Calving



Reminisce Angus Customer Feedback

- Bull Performance

Bid online sale
Visit the website
At Frontier Live Sale

Welcome to
FRONTIER
Live Sale

www.frontierlivesale.com

Sale will be broadcast Live - View sale and Bid!
Preregistration required @ website







American Angus Association / Breed Average EPD & Values / Spring 2026

	CED	BW	WW	YW	RADG	DMI	HP	Milk	Marb	RE	\$M	\$B	\$C
AAA Non-Parent Bulls	+6	+1.2	+68	+120	+0.26	+1.25	+11.7	+27	+0.78	+0.71	+66	+155	+268
Reminisce Sale Lots Avg	+7	+0.08	+49	+85	+0.20	+0.49	+12.2	+26	+0.65	+0.51	+77	+118	+230



Continuing our objective of “Making them Better, without Making them Bigger”

DNA- We have collected DNA on Reminisce cattle, extensively since 2008. With over 2,400 progeny tested.

Feedlot and Carcass data - We have collected feedlot and carcass data on cattle since 1988.

EPDs are just one tool we use for genetic selection. Cows are never culled based on their EPDs, only on their maternal performance.

BUYERS SPECIAL NOTE

If you are looking at our catalog for the first time, we want to take this opportunity to share our calving season and bull development program. We calve our cows in June and early July. The bulls are weaned in December, then, performance tested on a 41 mega cal. Ration for 140 days. After ultra-sounding at 12 months of age, we ship them back to high mountain (7,000-7,500’) dry summer pasture for 4 months. They are put back on a high roughage ration through sale day.

These bulls on average are only about 3 months old before the grass turns yellow and loses much of its nutritional value. They don’t have much of an opportunity to graze on good lush green grass. The cows as well have to produce milk on old dry feed with only protein blocks to supplement them.

Without feeding them high levels of grain, the calves do not post weaning and yearling weights of traditional yearling bulls. However, the additional 8 months of age allow us to develop them for longevity, providing a product with more ROI. We continue to performance test all of our cull calves and several groups of customer calves to ensure we are producing top performance-bred genetics.

SIGHT UNSEEN GUARANTEE

We understand not all buyers can make it to our sale. You can feel confident buying bulls sight unseen at Reminisce Angus. We take special interest in delivering prescription orders to our customers unable to attend. Please feel free to give us a call in advance to discuss your needs.

(406) 925-1416 Bryan / (406) 596-5629 Office Cell / (406) 683-6363 Office



Stockmens Insurance

- All Risk Mortality (ARM)
 - 7% up to \$24,999
- ARM & Accident, Sickness & Disease Infertility
 - 12.5% up to \$25k
- ARM & Comprehensive Infertility
 - 16% up to \$24,999
 - 17% \$25,000 or more

Rokstone Insurance

- All Risk Mortality (ARM)
 - 8.5% up to \$150,000



Kevin Peterson

406-683-6882

kevin@montanainsurance.net



Josh Boka

406-660-6100

josh@montanainsurance.net

Mountainview Insurance offers mortality insurance designed to protect your investment in the event of death or loss of use of your animal.

Also contact us for consultation on Farm & Ranch, PRF Rainfall Insurance & Livestock Risk Protection.

Contact us today to discuss your options.

(406) 683-6881



\$500

First Time Purchase Credit:

- All new bull buyers
- Existing Buyers can also get \$500 for bringing a new bull buyer

\$1000

Discount for 2027

All 2026 Bull Buyers will be entered into Drawing

Names will be placed in the hat by
the office

Winner announced at end of
sale

Montana Natural Soil Solutions - Presents



Tucker Garrigan
Enlightened Soil Corp
Regenerative Ag at Its Best
Thursday, March 5th
Angler Village
5:00 pm

Ensoil Algae for Crops:
Increase ROI - Reduce Inputs
Increase Yield
Improve Water Holding Capacity

Join us in the regenerative growing
revolution. What's good for Soil is Good
for People, Profit & the planet.

Annual Spring Bull Sale

Reference Sire Group

RM Big Easy 0585 FJB

39 Sons Sell

CED	BW	WW	YW	RADG	DMI	HP	CEM	Milk	\$EN	Marb	RE	\$M	\$W	\$F	\$G	\$B	\$C
+11	+0	+48	+90	+24	+58	+14.7	+15	+26	+1	+83	+51	+85	+45	+61	+59	+120	+241

Conneally Reflection
 Connealy Impression
 Pearl Pammy of Conanga 194
Byergo Big Easy 2601
 Byergo Sitting Bull 3500
 Byergo Miss Elia 6153
 Byergo Miss Elia 3414
 S A V Mustang 9134
 RM 2 Trend 3105
 REM Juice 1314
REM Everelda Entense 5361
 G G Maverick 530
 REM Everelda Entense 8351
 FV Everelda Entense P373



A maternal brother to McClendon, FJB was our sale topper in 2022, selling to Fitzsimmons Angus and Cayuse Livestock. They are high volume, nice topped, long bulls and they are gentle, and love to travel, first class that is; up and down the steep summer pastures. FJB is a high marbling bull as well with 111 calves indexing 104 for IMF and 104 for RE. We really like the Big Easy daughters, and we have a bunch. The volume is very noticeable. The gentle broodiness of the Big Easy daughters and their gorgeous udders are hard to beat in June calving.
 AAA 20147206

RM Big Easy 1518

4 Sons Sell

CED	BW	WW	YW	RADG	DMI	HP	CEM	Milk	\$EN	Marb	RE	\$M	\$W	\$F	\$G	\$B	\$C
+10	+1	+38	+67	+18	-.03	+12.2	+12	+25	+19	+60	+15	+90	+39	+50	+41	+92	+209

AAA Reg - 20572516 Sire: Byergo Big Easy 2601 / Dam: REM Lass 3339 by S A V Mustang 9134

Reference Grandsire - Byergo Big Easy 2601



Byergo Big Easy 2601 was a natural fit to the Reminisce Angus breeding program. He is a moderate, massive bull with less than 100 YW EPD. That's our style! Extreme Middle traits that cover all the bases with an emphasis on marbling, NOTE, not an extreme emphasis. The Big Easy sire group selling averaged 110 for IMF in a high marbling herd. Like all our herd bulls, we used him in volume and we liked the results.
 AAA 17389591

★ **PROVEN * PREDICTABLE * REPEATABLE VALUE * BVD - PI 3 FREE** ★

Annual Spring Bull Sale

American Outcross -Reference Sire Group

RM Scottsman 9625

21 Sons Sell

CED	BW	WW	YW	RADG	DMI	HP	CEM	Milk	\$EN	Marb	RE	\$M	\$W	\$F	\$G	\$B	\$C
-4	+1.6	+39	+64	+.15	+.30	+13.2	+0	+16	+24	+.89	+.34	+72	+26	+46	+61	+108	+212

AAA Reg - 19793944

Eroco of Bankhead

Ashley Euler

Ashley Eulona

Dunlouse Cortachy Boy D137

Ashley Elmighty

Champagne Cherry Bee B117

Cherry Bee W9 of Champagne

G A R Retail Product

RM Sequel 8535

G G Queen 9361

REM Ruby 1341

Bon View New Design 878

REM Ruby 1331

G G Ruby 8315



RM Scottsman 9625

Scottsman is an American outcross sire that is a dominant phenotype producing bull. His progeny are easy calving, with a lot of natural, Angus vigor. They are jet black, long sided, deep flanked and wide topped. These aren't usual characteristics for high marbling cattle, but they are standard procedure at Reminisce Angus. Scottsman indexed 131 for IMF and 107 for ribeye as a yearling. He was the #2 bull out of 172 contemporaries for WDA and became the high selling bull in the 2021 Reminisce Angus bull sale. Scottsman is a game changer in the breed. He provides natural heterosis with his pedigree. His dam, RM Ruby 1341 is a product of 30 years of breeding gorgeous, high marbling, functional cows. This 13 year old beauty has the most perfect phenotype in the breed. Her daughters are made the same way. Scottsman daughters have very tight, good udders. They are very good mothers and breed back well.

If you remember DHD Traveler 6807, you will love Scottsman bulls.

Owned with Baltrusch Angus, Fitzsimmons Angus and Challis Creek Cattle Company.



D H D Traveler 6807

Reference Sire Dunlouse Cortachy Boy D137

Scottsman, McLendon, and Dunlop are futuristic Angus sires with old world angus blood. They are a true outcross for nearly every herd in America.

NOTE THEIR EPDS are not mainstream.

Their sire is from Scotland.



Dunlouse Cortachy Boy D137

★ **PROVEN * PREDICTABLE * REPEATABLE VALUE * BVD - PI 3 FREE** ★

Annual Spring Bull Sale

American Outcross - Reference Sires

RM McClendon 9599

13 Sons Sell

CED	BW	WW	YW	RADG	DMI	HP	CEM	Milk	\$EN	Marb	RE	\$M	\$W	\$F	\$G	\$B	\$C
+11	-1.9	+25	+37	+1.3	-.59	+13.4	+8	+13	+26	+4.4	+4.4	+54	+10	+18	+39	+58	+129

AAA Reg - 19793942

Dunlouse Cortachy Boy D137

S A V Mustang 9134
RM 2 Trend 3105
REM Juice 1314

REM Everelda Entense 5361

G G Maverick 530
REM Everelda Entense 8351
FV Everelda Entense P373

RM McClendon 9599

McClendon is a half-brother to Scottsman and Dunlop. He is also a maternal brother to our record selling, RM FJB 0585, who brought \$25,000 in our 2022 sale.

He is a sure shot, problem free true full gestation, calving standout. McClendon calves are looking for milk before they hit the ground. They are up chasing heifers around in minutes. They are very attractive cattle. He, like Scottsman, is moderate in size. McClendon will deliver more live calves out of your heifers than any bull you breed to. He will moderate a cow herd in 1 generation to more sensible and functional size with good udders and very maternal. As is with all Reminisce herd bulls, high marbling comes standard in every genetic package we sell.

The McClendon AI calves from Challis Creek Cattle Company graded 36% prime and they were calf feds, not yearlings. Now that's a Measurable Difference in Marbling.

The McClendon bred heifers and 1st calvers were 100% bred back. That's a Measurable Difference.

Owned with Challis Creek Cattle Company and Fitzsimmons Angus Ranch.

RM McClendon 9599 is a true American outcross calving ease sire for nearly every herd in America. NOTE HIS EPDS are not mainstream. His sire is from Scotland.



RM Dunlop 9609

Semen Available

CED	BW	WW	YW	RADG	DMI	HP	CEM	Milk	\$EN	Marb	RE	\$M	\$W	\$F	\$G	\$B	\$C
+5	+1.7	+38	+54	+1.2	-.24	+10.3	+10	+13	+28	+6.9	+8.7	+72	+24	+41	+60	+102	+204

AAA Reg - 19793855

Dunlouse Cortachy Boy D137

G G Maverick 530
RM Maverick 530 9912
FV Barabaramere Jet T023

REM Barabaramere Jet 4346

RM I Trend 7528
REM Barabaramere Jet 0375
FV Barabaramere Jet T023

RM Dunlop 9609

Dunlop is another great American outcross sire from Reminisce Angus. His calves are long sided and deep. Dunlop is a high marbling and red meat yield sire, that will make feed efficient, grid topping cattle. His dam has raised some top selling bulls. She also raised the top Scottsman daughter we weaned in 2022. Dunlop progeny are gentle and consistent.

He is also a high libido bull, covering big swathes of pasture when he is turned out. Dunlop, like Scottsman and McClendon, are producing highly sought after future Reminisce Angus herd bulls. Reminisce Angus is leading the industry, "Back to the Future" with sires like Dunlop. High marbling comes standard in every genetic package we sell.

The Reminisce Dunlop yearling steers and heifers graded 80% prime, 20% High Choice.

Owned with Bradley Livestock

RM Dunlop 9609 is a true American outcross sire for nearly every herd in America.

NOTE HIS EPDS are not mainstream. His sire is from Scotland.



Annual Spring Bull Sale

Reference Sires

RM Combination 8806

6 Son Sell

CED	BW	WW	YW	RADG	DMI	HP	CEM	Milk	\$EN	Marb	RE	\$M	\$W	\$F	\$G	\$B	\$C
+9	-.4	+42	+81	+.21	+.60	+14.7	+8	+24	+14	+87	+71	+75	+45	+82	+63	+145	+263

AAA Reg - 19300377

Sire: Connealy Combination 0188 / Dam: Blevins Blackcap Beauty 2438 by Blevins Band Design 9817

RM Combination 8806

has been a good herd bull for us for 6 years and we used him cleanup for all 6 years. He comes from a very good, dispositioned cow, who was easy fleshing, and high marbling. 8806 calves are perfect XM bulls in size and performance.



**Reference Sire:
Connealy Combination 0188**

**Reference Sire:
S A V Mustang 9134**



RM Combination 7813

8 Sons Sell

CED	BW	WW	YW	RADG	DMI	HP	CEM	Milk	\$EN	Marb	RE	\$M	\$W	\$F	\$G	\$B	\$C
+8	-1.2	+42	+67	+.21	-.64	+10.7	+10	+32	+13	+.37	+30	+91	+55	+86	+33	+119	+245

AAA Reg - 19105528

Sire: Connealy Combination 0188 / Dam: REM Bell Sara 3306 by S A V Mustang 9134

RM Combination 6544

4 Sons Sell

CED	BW	WW	YW	RADG	DMI	HP	CEM	Milk	\$EN	Marb	RE	\$M	\$W	\$F	\$G	\$B	\$C
+6	+.1	+51	+86	+.20	+.27	+14.0	+5	+30	+15	+.35	+83	+94	+64	+85	+39	+125	+256

AAA Reg - 18731664

Sire: Connealy Combination 0188 / Dam: REM Forever Lady 3328 by S A V Mustang 9134

★ **PROVEN * PREDICTABLE * REPEATABLE VALUE * BVD - PI 3 FREE** ★

Annual Spring Bull Sale

Reference Sire Group

RM Hoover Dam 1592

22 Sons Sell

CED	BW	WW	YW	RADG	DMI	HP	CEM	Milk	\$EN	Marb	RE	\$M	\$W	\$F	\$G	\$B	\$C
+10	-1.2	+50	+91	+22	+1.00	+9.5	+7	+31	+4	+73	+77	+71	+58	+89	+56	+146	+260

Hoover Dam

S A F Connection
 SydGen C C & 7
 SydGen Forever Lady 4087

TC Gridiron 258
 Erica of Ellston C124
 Erica of Ellston V65

Connealy Consensus
 Connealy Combination 0188
 Black Cayra of Conanga 8127

REM Blackbird 6329

RM Sequel 8535
 REM Blackbird 1346
 Blevins Blackbird 6286

RM Hoover Dam 1592 was the high selling Hoover Dam bull in our 2023 sale, going to Dean and Lori Hunt in Waterloo, MT. He was and is a stellar XM calving bull with side by side carcass traits. His progeny records on 70 calves validate these claims- BW 96, WW 101, YW 102, IMF 105, RE 101. His dam is one to brag about. She is a moderate, square, feminine female and has a perfect udder full of milk. On 6 calves, she posts BW 95, WW 105, YW 99, IMF 109, RE 107. RM Hoover Dam 1592 calves are as fiery at birth as all the Reminisce bred genetics are. We haven't had one large calf or one, early dinky calf by him in 2 calf crops. AAA 20442168



RM Hoover Dam 1505 at work



**REM Blackbird 6329
 Dam - RM Hoover Dam 1592**

RM Hoover Dam 1505

7 Sons Sell

CED	BW	WW	YW	RADG	DMI	HP	CEM	Milk	\$EN	Marb	RE	\$M	\$W	\$F	\$G	\$B	\$C
+4	+1.0	+48	+75	+16	+1.8	+9.0	+4	+32	+15	+87	+26	+83	+62	+75	+58	+134	+257

AAA Reg - 20442189 Sire: Hoover Dam / Dam: REM Winny 1338 by RM Sequel 8535

RM Hoover Dam 1601

7 Sons Sell

CED	BW	WW	YW	RADG	DMI	HP	CEM	Milk	\$EN	Marb	RE	\$M	\$W	\$F	\$G	\$B	\$C
-1	+1.5	+49	+81	+20	+07	+11.4	+6	+28	+10	+1.02	+52	+85	+52	+75	+70	+146	+274

AAA Reg - 20442196 Sire: Hoover Dam / Dam: REM Winny 1338 by RM Sequel 8535

RM Hoover Dam 1601 is by one of our greatest Sequel daughters. She is well represented in this herd with 7 of her own calves and 30 flush calves weaned and put into production. 1601 bulls will carry on the female perfection she shared with us and add performance at weaning without increasing your cow size. This bull has many sisters in our herd from 3 different flushes.

★ **PROVEN * PREDICTABLE * REPEATABLE VALUE * BVD - PI 3 FREE** ★

Annual Spring Bull Sale

Reference Sires

RM 2Trend 8631

1 Son Sells

CED	BW	WW	YW	RADG	DMI	HP	CEM	Milk	\$EN	Marb	RE	\$M	\$W	\$F	\$G	\$B	\$C
+9	-.6	+40	+80	+.23	+.38	+14.7	+15	+35	+8	+.75	+.40	+81	+51	+67	+53	+120	+237

AAA Reg - 19298256

Sire: RM 2 Trend 3105 / Dam: REM Quality Lady 2333 by RM Sequel 8535

This is our sleeper, cleanup bull. We have a lot of this blood, so we have only used him cleanup...for now. His progeny are suggesting we use him more. They are moderate, high volume, high marbling, great uddered and high performing cattle. He, like his sire RM 2 Trend have the most clean up calves each year when we get the DNA results. **His first carcass, tested progeny graded 87% prime and 13% high choice as yearlings last spring.** We plan to use him heavier in the future. He has tremendous feet under him as well. He sired the lot one bull in this sale this year.



Cactus 2 Trend 038

11 Sons Sell

CED	BW	WW	YW	RADG	DMI	HP	CEM	Milk	\$EN	Marb	RE	\$M	\$W	\$F	\$G	\$B	\$C
+5	+.6	+56	+96	+.20	+.80	+10.1	+7	+28	-6	+.72	+.33	+77	+58	+67	+50	+118	+230

AAA Reg - 20054386

Sire: RM 2 Trend 6592 / Dam: Sitz Pride 2126 by Sitz Investment 660Z

Cactus 2 Trend 038 calves are high marbling, bigger framed cattle. We used him successfully as a cleanup bull. We were disappointed in his condition as a 3 year old bull after breeding until we saw how many calves he sired from the DNA results. There are several of his calves in this sale and they have a lot of marbling in them.

G G Commando 921

3 Sons Sell

CED	BW	WW	YW	RADG	DMI	HP	CEM	Milk	\$EN	Marb	RE	\$M	\$W	\$F	\$G	\$B	\$C
+8	+.9	+58	+105	+.21	+1.41	+12.1	+11	+46	-17	+.63	+.76	+68	+76	+91	+56	+147	+259

AAA Reg - 19612915

Sire: G G Commando 720 / Dam: G G Betty Erica 7141 by Sydgen Forward 3773

★ **PROVEN * PREDICTABLE * REPEATABLE VALUE * BVD - PI 3 FREE** ★

Annual Spring Bull Sale

Reference Sires



Sitz Upward 307R
 Connealy Onward
 Sitz Henrietta Pride 81M
Koupals B&B Identity
 G A R Exaltation 3144
 B & B Erica 605
 B & B Erica 4064
 Sitz Traveler 8180
 S A V final Answer 0035
 S A V Emulous 8145
MCATL Forever Lady 1429-138
 Leachman Rightt Time
 ALC Forever Lady R02S
 ALC Forever Lady K14P

Musgrave Aviator Grandsons

RM Aviators 0525 and 0535 are two calving ease, flush brothers from another grand cow that produced here for 14 years with a heifer's udder and a "Lassie" collie's disposition. Progeny from these two bulls are very similar in shape. Moderate, wide across the top and dense.

RM Aviator 0525

3 Sons Sell

CED	BW	WW	YW	RADG	DMI	HP	CEM	Milk	\$EN	Marb	RE	\$M	\$W	\$F	\$G	\$B	\$C
+4	+0	+44	+68	+1.15	+0.04	+12.3	+9	+24	+11	+0.78	+0.51	+74	+45	+55	+56	+112	+219

AAA Reg - 20143057 Sire: Musgrave Aviator / Dam: FV Mariah R134 by Hunts Calculator 2720

RM Aviator 0535

10 Sons Sell

CED	BW	WW	YW	RADG	DMI	HP	CEM	Milk	\$EN	Marb	RE	\$M	\$W	\$F	\$G	\$B	\$C
+7	-.6	+45	+76	+0.19	+0.15	+9.5	+16	+28	+0	+0.42	+0.53	+52	+47	+80	+38	+119	+206

AAA Reg - 20143062 Sire: Musgrave Aviator / Dam: FV Mariah R134 by Hunts Calculator 2720

FBA Against the Grain

6 Sons Sell

CED	BW	WW	YW	RADG	DMI	HP	CEM	Milk	\$EN	Marb	RE	\$M	\$W	\$F	\$G	\$B	\$C
-1	+2.9	+47	+73	+0.15	+0.26	+12.5	+3	+29	+13	+0.12	+0.59	+69	+48	+54	+25	+79	+171

AAA Reg - 20106439 Sire: Mc Cumber Influence 7121 / Dam: MA Missy 634 by Mc Cumber Mason 352

FJB Against the Grain 1634 was our pick from the FBA herd as a clean up bull. Like our sale, his dam was the reason we bought the bull. His calves are well structured and an outcross to the genetics in this herd. If you need new blood look at these dense bulls.

★ **PROVEN * PREDICTABLE * REPEATABLE VALUE * BVD - PI 3 FREE** ★

Annual Spring Bull Sale

Reference Sires

V A R Reserve 1111

8 Grandsons Sell

CED	BW	WW	YW	RADG	DMI	HP	CEM	Milk	\$EN	Marb	RE	\$M	\$W	\$F	\$G	\$B	\$C
+11	+5	+49	+89	+23	+42	+7.4	+7	+21	-4	+7.6	+9.1	+45	+43	+84	+65	+150	+240



Boyd New Day 8005
B/R New Day 454
 B/R Ruby 1224
 Connealy Onward
Sandpoint Blackbird 8809
 Riverbend Blackbird 4301

A A R New Trend
 S V F Forever Lady 57D
 B/R New Design 323
 H F Ruby 036-951
 Connealy Lead On
 Altune of Conanga 6104
 G A R Grid Maker
 Riverbend Blackbird 2204

We have retained and used Reserve sons in our herd. These bulls come from tremendous, top, consistent producing cows, all over 10 years old. As you will see, we did not keep them for their EPDs. We kept them, because they were big time performers out of our tried and true cows. This is how we define sustainability. It's never about EPDs. It is always about how many are born alive, how much they weigh, how well they grade and how many daughters get bred back for the longest period of time.

RM Reserve 0581

4 Sons Sell

CED	BW	WW	YW	RADG	DMI	HP	CEM	Milk	\$EN	Marb	RE	\$M	\$W	\$F	\$G	\$B	\$C
+11	+3	+45	+81	+22	+50	+11.0	+10	+23	+4	+8.4	+7.3	+64	+39	+59	+65	+125	+226

AAA Reg - 20142996 Sire: V A R Reserve 1111 / Dam: REM Quality Lady 1349 by G G Maverick 530

RM Reserve 0704

4 Sons Sell

CED	BW	WW	YW	RADG	DMI	HP	CEM	Milk	\$EN	Marb	RE	\$M	\$W	\$F	\$G	\$B	\$C
+11	-.1	+48	+83	+19	+42	+9.9	+13	+30	+11	+7.9	+6.5	+80	+56	+66	+60	+126	+243

AAA Reg - 20143068 Sire: V A R Reserve 1111 / Dam: MJB Barbwire 1720 by G G Maverick 530

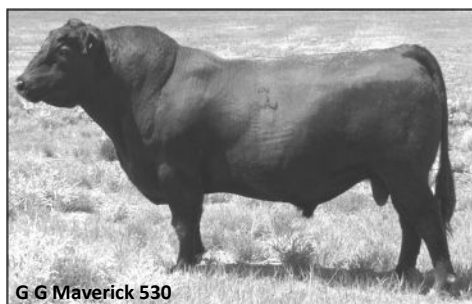
RM Maverick 530 9568

2 Sons Sell

CED	BW	WW	YW	RADG	DMI	HP	CEM	Milk	\$EN	Marb	RE	\$M	\$W	\$F	\$G	\$B	\$C
+10	+3	+33	+59	+14	+49	+13.1	+8	+34	+17	+7.0	+3.4	+87	+45	+55	+47	+103	+221

AAA Reg - 16522871

RM Maverick 9568 is a bull we have used a lot at Reminisce Angus. He is a GG Maverick 530 son by RM Big West's dam, G G Queen 9361. It is an excellent combination for feet, marbling and longevity.



G G Maverick 530

G G Maverick 530
 G G Della 3320
 Generic Bando 581
G G Queen 9361
 Mars Queenie 547

B A R Ext Traveler 205
 C R A Bextor 872 5205 608
 Cra Lady Jaye 608 498 S Easy
 B/R New Design 036
 G G Della 0101
 Tehama Bando 155
 Landmark Belle 0252
 Transformer 100 E A R
 3477 F A R Queen 8478

FOOT NOTE TERM DEFINITIONS AND ABBREVIATIONS

EXTREME MIDDLE or (XM)- We do not focus on any one trait to an extreme level. We maximize the limits of moderation in every trait. Genetic traits are similar to the nutritional value of vitamins and minerals and how they interact with each other.

We start with a functional cow, which is one that can walk (Structure) and is willing to live within the parameters of your place (Disposition). Can she have a healthy calf on her own, (not too big, not too small). If it gets up quickly(vigor), will it be able to nurse(nice udder), will she let it(maternal).

That was easy, now how will the little rascal do amongst his or her peers(performance). Will this cow be willing to do this again next year(fertility)? Once jr. and let's assume at this point that jr. is a he, is weaned and goes on to get his performance degree, will he add value with a few extra pounds. Can he do this without eating part of the other calves ration(feed efficiency), if so he has now gained his masters in performance and is ready for the final test of carcass quality.

Carcass quality(marbling and ribeye) is just icing on the cake, but if jr. has added value in his other traits, the icing is yours to keep, if not, its not enough to cover the losses to this point. Ribeye is important as it is the measurement for total red meat yield (RMY) on a carcass, marbling retrieves more added value.

As you can see the extreme middle is anything but average. They have to do it all in a predictable repeatable way for us to be profitable. We do have cattle in some traits that rank in the top percentiles of that trait, but we do not focus on that one particular trait and continue to maximize it. This is why we have been able to make them better without making them bigger.

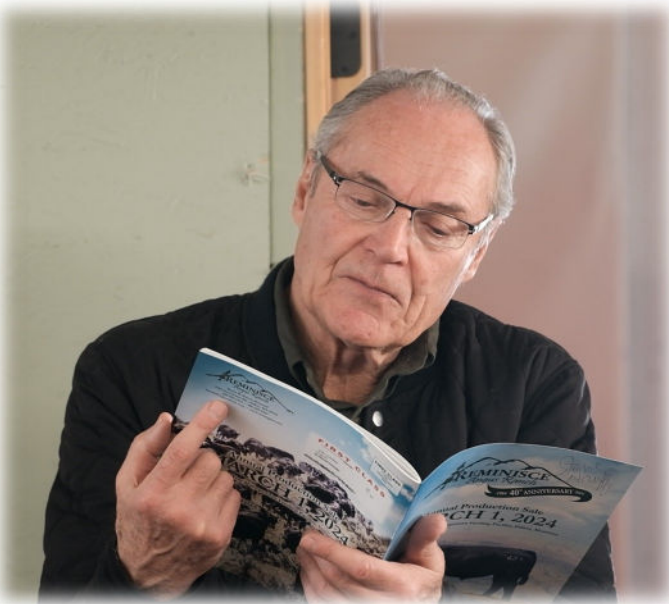
This is the measurable difference in genetic philosophy.

OVER AND UNDER- Over 50 for WW EPD and under 100 for YW EPD.

RMY- Red Meat Yield= Size of the actual ribeye per 100#

Example: 1,000# bull with a 12 inch ribeye would have a RMY of 1.20. The breed average is 1.12

COW TRAITS- Bulls with positive HP and \$EN



Notes:



1 RM Combination 7813 4662

Birthdate: 06/29/24
Tattoo: 4662
Reg: 21265949

Marb	.34
RE	.63
RADG	.28
DMI	.97
\$EN	-23
HP	11.7
\$M	81
\$B	141
\$C	264

Connealy Consensus
Connealy Combination 0188
Black Cayra of Conanga 8127

RM Combination 7813

S A V Mustang 9134
REM Bell Sara 3306
FV Bell Sara T278
RM 2 Trend 3105

RM 2Trend 8631

REM Rita 1479

REM Rita 9305

REM Quality Lady 2333

V A R Reserve 1111

REM Rita 7344

CED	BW	Birth	Wean	Yrlg	CEM	Milk	WR	YR
3	85	1.9	69	123	11	26	105	108

It is hard to pick the Lot #1 bull for our sale with 25 contenders, but it all came down to the 2 sires in this bull's pedigree - that are the extreme middle progeny producers, 7813 and 8631. We want longevity and performance and this bull stands among the best we have to offer.

2 RM Combination 6544 4810

Birthdate: 06/02/24
Tattoo: 4810
Reg: 21461099

Marb	.53
RE	.94
RADG	.19
DMI	.60
\$EN	3
HP	12.6
\$M	97
\$B	153
\$C	295

Connealy Consensus
Connealy Combination 0188
Black Cayra of Conanga 8127

RM Combination 6544

S A V Mustang 9134
REM Forever Lady 3328
REM Forever Lady 1370
B/R New Day 454

V A R Reserve 1111

SMB Blackbird Direct 9854

SMB Blackbird Direct 5863
Blevins Blackbird Direct 7207

Sandpoint Blackbird 8809

Cole Creek Black Seal 230

CED	BW	Birth	Wean	Yrlg	CEM	Milk	WR	YR
9	94	1.9	61	98	9	30	121	112

A powerful, high volume Combination X Reserve cross with a big wide top. Over and under performance EPDs and a big time ribeye, indexing 119

3 RM Hoover Dam 4570

Birthdate: 06/02/24
Tattoo: 4570
Reg: 21265840

Marb	.85
RE	.12
RADG	.21
DMI	.92
\$EN	-2
HP	11.7
\$M	84
\$B	118
\$C	237

SydGen C C & 7
Hoover Dam
Erica of Ellston C124

RM Hoover Dam 1592

Connealy Combination 0188
REM Blackbird 6329
REM Blackbird 1346
Connealy Impression

Byergo Big Easy 2601

REM Winny 1317

REM Winny 1338

Byergo Miss Elia 6153

RM Sequel 8535

RM Winny 8302

CED	BW	Birth	Wean	Yrlg	CEM	Milk	WR	YR
13	77	-1.1	59	98	11	26	115	111

The lead off bull for the powerhouse RM Hoover Dam standout 1592. His over and under performance EPDs and high marbling genetics, indexing 117, will be fought over on sale day.

4 RM Combination 8806 4661

Birthdate: 06/28/24
Tattoo: 4661
Reg: 21265950

Marb	.51
RE	.81
RADG	.25
DMI	1.43
\$EN	-24
HP	11
\$M	34
\$B	120
\$C	190

Connealy Consensus
Connealy Combination 0188
Black Cayra of Conanga 8127

RM Combination 8806

Blevins Band Design 9817
Blevins Blackcap Beauty 2438
Blevins Blackcap Beauty
B/R New Day 454

V A R Reserve 1111

REM Pride 0386

REM Pride 7310

Sandpoint Blackbird 8809

Connealy Combination 0188

MJB Pride 3723

CED	BW	Birth	Wean	Yrlg	CEM	Milk	WR	YR
4	86	2.7	61	114	6	17	105	115

A high performance Combination grandson with volume and good carcass traits, indexing 116 for ribeye.



SMB Blackbird Direct 9854 - Dam Lot 2

5 RM Hoover Dam 4617

Birthdate: 06/12/24
Tattoo: 4617
Reg: 21265856

Marb	1.03
RE	.63
RADG	.26
DMI	.6
\$EN	-18
HP	11.7
\$M	62
\$B	163
\$C	273

SydGen C C & 7
Hoover Dam
Erica of Ellston C124

RM Hoover Dam 1592

Connealy Combination 0188
REM Blackbird 6329
REM Blackbird 1346
S A V Mustang 9134

RM 2 Trend 3105

REM Duchess Product 7381

REM Juice 1314
RM Sequel 8535
SRM Duchess Product 2834
Blevins Duchess Product 3425

CED	BW	Birth	Wean	Yrlg	CEM	Milk	WR	YR
5	86	1.2	58	104	6	29	116	114

A Hoover Dam 1592 from a cow that produces top ten lots everytime she has a bull. He qualifies as a "Saturated Fat Club" bull with his 1.04 IMF EPD, indexing 121 for IMF and 117 for ribeye. His daughter will be Gorgeous and long lasting.



REM Winny 1317 - Dam Lot 3

6 RM Big Easy FJB 4591

Birthdate: 06/05/24
Tattoo: 4591
Reg: 21267174

Marb	1.04
RE	.27
RADG	.21
DMI	1.07
\$EN	-22
HP	12.4
\$M	68
\$B	129
\$C	235

Connealy Impression
Byergo Big Easy 2601
Byergo Miss Elia 6153
RM Big Easy 0585 FJB
RM 2 Trend 3105
REM Everelda Entense 5361
REM Everelda Entense 8351
B/R New Day 454
V A R Reserve 1111
Sandpoint Blackbird 8809
REM Queenie 9442
RM 2 Trend 3105
REM Queenie 6408
REM Queenie 9308

CED	BW	Birth	Wean	Yrlg	CEM	Milk	WR	YR
20	80	-4.1	50	95	12	25	105	113

The lowest Birth EPD bull in this sale offering! There is a lot of performance behind this "Saturated Fat Club" bull as well, indexing 111 for marbling

9 RM Hoover Dam 4565

Birthdate: 06/01/24
Tattoo: 4565
Reg: 21265827

Marb	.71
RE	.37
RADG	.20
DMI	.57
\$EN	-7
HP	12.6
\$M	69
\$B	129
\$C	236

SydGen C C & 7
Hoover Dam
Erica of Ellston C124
RM Hoover Dam 1592
Connealy Combination 0188
REM Blackbird 6329
REM Blackbird 1346
S A V Final Answer 0035
S A V Mustang 9134
S A V Emblynette 7415
REM Lass 4315
REM Maverick 0932
REM Lass 2336
REM Lass 0308

CED	BW	Birth	Wean	Yrlg	CEM	Milk	WR	YR
10	85	-1.2	52	88	8	39	130	115

A calving ease powerhouse by another 12 year cow. Live calves in this market are valuable!

7 RM 2Trend 038 4701

Birthdate: 05/28/24
Tattoo: 4701
Reg: 21265879

Marb	.79
RE	.69
RADG	.22
DMI	.36
\$EN	-4
HP	10.2
\$M	75
\$B	150
\$C	270

RM 2 Trend 6592
RM 2 Trend 3105
Cactus 2 Trend 038
REM Dutchess 9319
Sitz Investment 6602
Sitz Pride 2126
Sitz Pride 797
Koupals B&B Identity
Musgrave Aviator
MCATL Forever Lady 1429-138
MJB Rita 1788
V A R Reserve 1111
REM Rita 9387
REM Rita 6447

CED	BW	Birth	Wean	Yrlg	CEM	Milk	WR	YR
0	74	.4	62	98	13	25	116	108

This bull's brother was the lot 1 bull last year. He is a calving ease standout with over and under performance EPDs and side by side carcass traits.

10 RM Big Easy FJB 4575

Birthdate: 06/03/24
Tattoo: 4575
Reg: 21265938

Marb	.75
RE	.49
RADG	.25
DMI	.81
\$EN	-8
HP	12.1
\$M	70
\$B	127
\$C	235

Connealy Impression
Byergo Big Easy 2601
Byergo Miss Elia 6153
RM Big Easy 0585 FJB
RM 2 Trend 3105
REM Everelda Entense 5361
REM Everelda Entense 8351
Connealy Consensus
Connealy Combination 0188
Black Cayra of Conanga 8127
REM Lady Ella 6373
JVC Bismarck 5682 060
REM Lady Ella 4313
REM Lady Ella 1347

CED	BW	Birth	Wean	Yrlg	CEM	Milk	WR	YR
13	84	-1.1	52	97	13	27	99	105

A powerful bull by one of the most moderate, perfect shaped cows we have ever raised. If you bought Lot 1, buy this one. You can use this great bull on heifers too.

8 RM Aviator 0535 4913

Birthdate: 06/21/24
Tattoo: 4913
Reg: 21265915

Marb	.34
RE	.57
RADG	.19
DMI	.50
\$EN	-8
HP	13
\$M	74
\$B	122
\$C	232

Koupals B&B Identity
Musgrave Aviator
MCATL Forever Lady 1429-138
RM Aviator 0535
Hunts Calculator 2720
FV Mariah R134
FV Mariah 3151
S A V Final Answer 0035
REM's Answer 2701
Ox Bow Beebe Queen 0146
RMV Gammer 4052
G G Maverick 530
RMV Gammer 1011
RMV Gammer 8039

CED	BW	Birth	Wean	Yrlg	CEM	Milk	WR	YR
10	79	-1.7	50	84	15	32	119	116

This power Aviator bull's 12 year old dam is bred back again this year and has left quite a mark in the Reminisce books in several categories.



11 RM Aviator 0535 4702

Birthdate: 05/31/24
Tattoo: 4702
Reg: 21265913

Koupals B&B Identity
MCATL Forever Lady 1429-138
Hunts Calculator 2720
FV Mariah R134
FV Mariah 3151
S A V Mustang 9134
REM Juice 1314
RM Sequel 8535
MJB Erica 9743

RM Aviator 0535

FV Mariah R134

RM 2 Trend 3105

MJB Erica 0779

MJB Erica 1710

Marb	.49
RE	.43
RADG	.21
DMI	.38
\$EN	-7
HP	11.9
\$M	61
\$B	117
\$C	213

CED	BW	Birth	Wean	Yrlg	CEM	Milk	WR	YR
11	59	-.8	46	80	15	26	110	103

A classic Reminisce XM calving ease bull in the top 10% for DMI and side by side carcass traits

12 RM Scottsman 4569

Birthdate: 06/01/24
Tattoo: 4569
Reg: 21265839

Ashley Eular
Dunlouise Cortachy Boy D137
Champagne Cherry Bee B117
RM Sequel 8535
Rem Ruby 1331
Connealy Consensus
Black Cayra of Conanga 8127
REM Natural 1812
A J R Lass 7224

RM Scottsman 9625

REM Ruby 1341

Connealy Combination 0188

REM Lass 8362

REM Lass 3303

Marb	.54
RE	.66
RADG	.25
DMI	.83
\$EN	4
HP	12.6
\$M	87
\$B	130
\$C	256

CED	BW	Birth	Wean	Yrlg	CEM	Milk	WR	YR
-2	94	2	59	104	2	21	112	116

You will like the muscle in this bull. We consider his dam one of the best performance producing cows in the herd and she is in the cow family that has produced the most lot 23 bulls in this sale. His numbers are solid across the board.

13 RM Big Easy FJB 4515

Birthdate: 05/18/24
Tattoo: 4515
Reg: 21265924

Connealy Impression
Byergo Miss Elia 6153
RM 2 Trend 3105
REM Everelda Entense 5361
REM Everelda Entense 8351
Connealy Impression

RM Big Easy 0585 FJB

REM Everelda Entense 5361

Byergo Big Easy 2601

REM Queen Peggy 0384

REM Queen Peggy 6449

REM Natural 1812
RMV Queen Peggy 4055

Marb	.73
RE	.57
RADG	.23
DMI	.74
\$EN	-6
HP	11.8
\$M	66
\$B	116
\$C	216

CED	BW	Birth	Wean	Yrlg	CEM	Milk	WR	YR
13	74	-.7	56	96	13	14	100	94

A calving ease FJB with over and under performance traits and side by side carcass EPDs.



14 RM Big Easy FJB 4528

Birthdate: 05/25/24
Tattoo: 4528
Reg: 21265930

Connealy Impression
Byergo Big Easy 2601
Byergo Miss Elia 6153
RM 2 Trend 3105
REM Everelda Entense 5361
REM Everelda Entense 8351
RM 'S Answer 4528

RM Big Easy 0585 FJB

REM Everelda Entense 5361

RM Debonaire 7572

REM Cassie 0388

REM Cassie 8304

REM Lass 5306
REM Natural 1812
REM Cassie 6375

Marb	.85
RE	.25
RADG	.24
DMI	.51
\$EN	-14
HP	13.5
\$M	66
\$B	116
\$C	216

CED	BW	Birth	Wean	Yrlg	CEM	Milk	WR	YR
8	83	.9	57	98	14	26	120	112

A high marbling FJB indexing 129 for IMF and 111 for ribeye with one of the highest WDA scores in the group; backed with 4 generations of high marbling cows families. That's longevity in the Reminisce herd.



15 RM Maverick 9568 4202

Birthdate: 06/03/24
Tattoo: 4202
Reg: 21265828

Marb	.46
RE	.77
RADG	.21
DMI	1.22
\$EN	10
HP	12.4
\$M	91
\$B	109
\$C	232

C R A Bextor 872 5205 608

G G Maverick 530

G G Della 3320

RM Maverick 530 9568

Generic Bando 581

G G Queen 9361

Mars Queenie 547

Connealy Lead On

Connealy Onward

Altune of Conanga 6104

RMV Gammer 8034

Rockn D Ambush 1531

Three Trees Gammer

1322

Bon View Gammer 85

CED	BW	Birth	Wean	Yrlg	CEM	Milk	WR	YR
10	90	2.2	60	104	6	21	100	100

16 RM Maverick 9568 4909

Birthdate: 06/03/24
Tattoo: 4909
Reg: 21467176

Marb	.91
RE	.46
RADG	.21
DMI	-.07
\$EN	19
HP	12.9
\$M	91
\$B	133
\$C	264

C R A Bextor 872 5205 608

G G Maverick 530

G G Della 3320

RM Maverick 530 9568

Generic Bando 581

G G Queen 9361

Mars Queenie 547

Connealy Lead On

Connealy Onward

Altune of Conanga 6104

RMV Gammer 8034

Rockn D Ambush 1531

Three Trees Gammer

1322

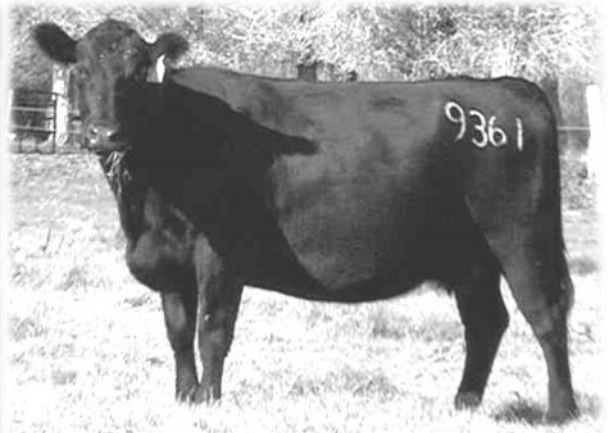
Bon View Gammer 85

CED	BW	Birth	Wean	Yrlg	CEM	Milk	WR	YR
13	90	-1.6	47	79	9	23	100	100

These two bulls are brothers to one of the high selling bulls in our 2023 sale going to Dean and Lori Hunt...and they are just as good!



REM Ruby 1341 - Paternal Grand Dam of Lots 17 & 18



G G Queen 9361
Paternal Grand Dam
Lots 15 & 16

17 RM Scottsman 4555

Birthdate: 05/31/24
Tattoo: 4555
Reg: 21265825

Marb	.61
RE	.55
RADG	.24
DMI	.91
\$EN	4
HP	14
\$M	82
\$B	117
\$C	234

Ashley Euler

Dunlouse Cortachy Boy D137

Champagne Cherry Bee B117

RM Scottsman 9625

RM Sequel 8535

REM Ruby 1341

Rem Ruby 1331

Connealy Lead On

Connealy Onward

Altune of Conanga 6104

RMV Gammer 8034

Rockn D Ambush 1531

Three Trees Gammer

1322

Bon View Gammer 85

CED	BW	Birth	Wean	Yrlg	CEM	Milk	WR	YR
3	86	1.9	59	106	0	12	100	100

18 RM Scottsman 4706

Birthdate: 06/08/24
Tattoo: 4706
Reg: 21265881

Marb	.66
RE	.38
RADG	.21
DMI	.71
\$EN	15
HP	12.8
\$M	93
\$B	118
\$C	246

Ashley Euler

Dunlouse Cortachy Boy D137

Champagne Cherry Bee B117

RM Scottsman 9625

RM Sequel 8535

REM Ruby 1341

Rem Ruby 1331

Connealy Lead On

Connealy Onward

Altune of Conanga 6104

RMV Gammer 8034

Rockn D Ambush 1531

Three Trees Gammer

1322

Bon View Gammer 85

CED	BW	Birth	Wean	Yrlg	CEM	Milk	WR	YR
8	93	.6	56	96	2	22	100	100

These two embryos should stay together. Their sire, RM Scottsman 9625 is proving himself to make very broody females and moderate, thick and deep bulls. They are standouts and their dam is the real story with a history of top selling embryos in our annual bull sales.

19 RM Big Easy FJB 4819

Birthdate: 06/15/24
Tattoo: 4819
Reg: 21467175

Marb	.46
RE	.16
RADG	.21
DMI	.27
\$EN	19
HP	11.4
\$M	83
\$B	85
\$C	193

Connealy Impression
Byergo Big Easy 2601
Byergo Miss Elia 6153
RM Big Easy 0585 FJB
RM 2 Trend 3105
REM Everelda Entense 5361
REM Everelda Entense 8351
S A V Pioneer 7301
JVC Pioneer X080
Basin Lucy 5278
REM Blackbird 3344
RM Sequel 8535
REM Blackbird 1336
REM Blackbird 5320

CED	BW	Birth	Wean	Yrlg	CEM	Milk	WR	YR
3	87	2	45	82	6	23	100	100

20 RM Scottsman 4614

Birthdate: 06/11/24
Tattoo: 4614
Reg: 21373431

Marb	.37
RE	.20
RADG	.18
DMI	.58
\$EN	21
HP	13.4
\$M	88
\$B	101
\$C	219

Ashley Eular
Dunlouse Cortachy Boy D137
Champagne Cherry Bee B117
RM Scottsman 9625
RM Sequel 8535
REM Ruby 1341
Rem Ruby 1331
S A V Pioneer 7301
JVC Pioneer X080
Basin Lucy 5278
REM Blackbird 3344
RM Sequel 8535
REM Blackbird 1336
REM Blackbird 5320

CED	BW	Birth	Wean	Yrlg	CEM	Milk	WR	YR
1	84	2.3	48	82	5	15	100	100

Two good embryos by the one great cow. We started flushing her at the age of 10. Perfect Udder, great performance, predictable repeatable genetics

Reference Sire - RM Natural 1812 Maternal Grand Sire Lots 21 & 22



Reference Dam - REM EVERELDA ENTENSE 5361
Dam of RM Big Easy 0585 FJB
Paternal Grand Dam - Lots 19, 20, 21, 22

21 RM Big Easy FJB 4595

Birthdate: 06/07/24
Tattoo: 4595
Reg: 21268203

Marb	.83
RE	.83
RADG	.25
DMI	.75
\$EN	-5
HP	14.2
\$M	91
\$B	149
\$C	284

Connealy Impression
Byergo Big Easy 2601
Byergo Miss Elia 6153
RM Big Easy 0585 FJB
RM 2 Trend 3105
REM Everelda Entense 5361
REM Everelda Entense 8351
RM I Trend 7528
REM Natural 1812
Blevins Queen Solution 9629
REM Lass 3303
Basin Franchise P142
A J R Lass 7224
Riverbend Lass 4261

CED	BW	Birth	Wean	Yrlg	CEM	Milk	WR	YR
13	97	.4	54	98	16	39	100	100

22 RM Big Easy FJB 4572

Birthdate: 06/03/24
Tattoo: 4572
Reg: 21265937

Marb	.96
RE	.80
RADG	.26
DMI	.79
\$EN	-8
HP	12.3
\$M	70
\$B	142
\$C	254

Connealy Impression
Byergo Big Easy 2601
Byergo Miss Elia 6153
RM Big Easy 0585 FJB
RM 2 Trend 3105
REM Everelda Entense 5361
REM Everelda Entense 8351
RM I Trend 7528
REM Natural 1812
Blevins Queen Solution 9629
REM Lass 3303
Basin Franchise P142
A J R Lass 7224
Riverbend Lass 4261

CED	BW	Birth	Wean	Yrlg	CEM	Milk	WR	YR
14	85	-.7	52	97	14	36	100	100

These two FJB standouts come from the lot 23 powerhouse house, Lass cow family. They post over and under performance traits and side by side carcass traits. They also rank in the top 25% for DMI.

23 RM Big Easy FJB 4542

Birthdate: 05/29/24
Tattoo: 4542
Reg: 21265932

Marb	.99
RE	.74
RADG	.23
DMI	.75
\$EN	0
HP	16
\$M	88
\$B	124
\$C	249

Connealy Impression
Byergo Big Easy 2601
Byergo Miss Elia 6153

RM Big Easy 0585 FJB

RM 2 Trend 3105
REM Everelda Entense 5361
REM Everelda Entense 8351
G G Maverick 530

RM Maverick 530 9912
FV Barbaramere Jet T023

REM Duchess Design 4367

G A R Predestined
Blevins Duchess Design
Blevins 814Z Duchess 6010

CED	BW	Birth	Wean	Yrlg	CEM	Milk	WR	YR
14	76	-1.5	51	93	14	22	128	120



And here's Johnny! Like letter's of transit in Casablanca, there is not a number on this bull's resume that can be recinded, not even questioned. He is an easing calving, high performing bull with a low DMI, high HP, positive \$EN; a member of the "Saturated Fat Club", indexing 144 for IMF, 130 for ribeye with a red meat yield of 125. These are all just minor qualifiers to make the Lot 23 contenders list. As always the clincher is the age and quality of his dam. Like so many in this herd, she was a moderate sized, perfect uddered cow at 10 when she produced this great bull. Her dam was a perfect uddered cow as well. She raised 8 calves that indexed 96 BW, 95 WW, 106 YW, 112 IMF, 120 RE. Those numbers are hard to beat on 8 calves in any herd. The quality of this bull matches that of the Cattle Baron Cigar and that's all I have to say about this bull.

Lot 23 - Sponsored by:



MASSEY FERGUSON



Bobcat

Shepherd's Garage, Inc.

Jackson, MT.
406-834-3143

Dillon, MT.
406-683-2018



24 RM Hoover Dam 4904

Birthdate: 05/17/24
Tattoo: 4904
Reg: 21265898

Marb	.59
RE	1.01
RADG	.19
DMI	.81
\$EN	8
HP	10.6
\$M	63
\$B	140
\$C	245

SydGen C C & 7
Hoover Dam
Erica of Ellston C124
Connealy Combination 0188

RM Hoover Dam 1592

REM Blackbird 6329
REM Blackbird 1346
G G Maverick 530
RM Maverick 530 9568
G G Queen 9361

RMVK Forever Trendy 2087

Lafins Fast Forward 5102
FV Forever Trendy T279
V A R Forever Trendy 3039

CED	BW	Birth	Wean	Yrlg	CEM	Milk	WR	YR
7	78	.8	48	85	4	30	111	102

This maybe the best RM Hoover Dam 1592 in the sale. His numbers are solid across the board with a big time ribeye EPD!

25 RM Big Easy FJB 4907

Birthdate: 06/01/24
Tattoo: 4907
Reg: 21265947

Marb	.66
RE	.84
RADG	.22
DMI	.55
\$EN	9
HP	14.8
\$M	88
\$B	125
\$C	250

Connealy Impression
Byergo Big Easy 2601
Byergo Miss Elia 6153

RM Big Easy 0585 FJB

RM 2 Trend 3105
REM Everelda Entense 5361
REM Everelda Entense 8351
Koupals B&B Identity

Musgrave Aviator
MCATL Forever Lady 1429-138

MVK Black Magic 1086

RM Baron 5811
RMV Black Magic 8001
RMK Black Magic 5004

CED	BW	Birth	Wean	Yrlg	CEM	Milk	WR	YR
11	77	-2.1	42	81	8	29	106	106

A calving ease FJB with classic Reminisce performance traits and side by side carcass EPDs.

26 RM McLendon 4805

Birthdate: 05/31/24
Tattoo: 4805
Reg: 21265956

Ashley Euler
Dunlouse Cortachy Boy D137
Champagne Cherry Bee B117

RM McLendon 9599

RM 2 Trend 3105
REM Everelda Entense 5361
REM Everelda Entense 8351
Koupals B&B Identity

Musgrave Aviator

SMB Erica Traveler 1884

MCATL Forever Lady 1429-138
G G Maverick 530
SMB Erica Traveler 1803
Blevins Erica Traveler 7226

Marb	.55
RE	.63
RADG	.19
DMI	.96
\$EN	-10
HP	12.9
\$M	73
\$B	124
\$C	234

CED	BW	Birth	Wean	Yrlg	CEM	Milk	WR	YR
3	83	3.3	62	103	6	29	110	110

Talitha says this is her kind of bull, and I agree. A high performing McLendon bull with side by side carcass traits, posting a 1.32 RMY

27 RM Big Easy FJB 4520

Birthdate: 05/20/24
Tattoo: 4520
Reg: 21265927

Connealy Impression
Byergo Big Easy 2601
Byergo Miss Elia 6153

RM Big Easy 0585 FJB

RM 2 Trend 3105
REM Everelda Entense 5361
REM Everelda Entense 8351
B/R New Day 454

V A R Reserve 1111

REM Pride 0336

Sandpoint Blackbird 8809
RM Baron 5811
REM Pride 2349

Marb	.92
RE	.81
RADG	.24
DMI	.50
\$EN	6
HP	13.6
\$M	90
\$B	155
\$C	291

CED	BW	Birth	Wean	Yrlg	CEM	Milk	WR	YR
6	88	.1	52	96	6	23	117	115

There were many contenders for Lot 1. Like Lot 23, there are no holes here either. With over and under performance EPDS, top DMI, positive cows trait EPDs, high side by side carcass traits; indexing 136 for IMF and 126 for RE and posting a 1.22 RMY

28 RM Scottsman 4531

Birthdate: 05/27/24
Tattoo: 4531
Reg: 21265813

Ashley Euler
Dunlouse Cortachy Boy D137
Champagne Cherry Bee B117

RM Scottsman 9625

RM Sequel 8535
REM Ruby 1341
Rem Ruby 1331
Koupals B&B Identity

Musgrave Aviator

REM Eulima Precise 1368

MCATL Forever Lady 1429-138
RM 2 Trend 3105
REM Eulima Precise 6371
REM Eulima Precise 4310

Marb	.79
RE	.21
RADG	.20
DMI	.24
\$EN	22
HP	11.8
\$M	82
\$B	137
\$C	260

CED	BW	Birth	Wean	Yrlg	CEM	Milk	WR	YR
-4	80	1.5	58	90	3	16	110	106

This Scottsman is punchy! Over and under performance traits, top DMI; positive EN and high marbling

29 RM Big Easy FJB 4514

Birthdate: 05/18/24
Tattoo: 4514
Reg: 21265923

Connealy Impression
Byergo Big Easy 2601
Byergo Miss Elia 6153

RM Big Easy 0585 FJB

RM 2 Trend 3105
REM Everelda Entense 5361
REM Everelda Entense 8351
B/R New Day 454

V A R Reserve 1111

REM Miss Baranda 0335

Sandpoint Blackbird 8809
REM Normanday 2907
REM Miss Baranda 8336
REM Miss Baranda 3321

Marb	.53
RE	.38
RADG	.25
DMI	.26
\$EN	-7
HP	12.1
\$M	72
\$B	115
\$C	221

CED	BW	Birth	Wean	Yrlg	CEM	Milk	WR	YR
11	81	-1	45	82	14	34	117	119

Here's a big performing, calving ease FJB

30 RM McLendon 4905

Birthdate: 05/21/24
Tattoo: 4905
Reg: 21265899

Ashley Euler
Dunlouse Cortachy Boy D137
Champagne Cherry Bee B117

RM McLendon 9599

RM 2 Trend 3105
REM Everelda Entense 5361
REM Everelda Entense 8351
SydGen Multi Tool 2432

SydGen Resolve 7132

RMVK Gammer 2088

SydGen Dixie Erica 5104
Connealy Onward
RMV Gammer 8034
Three Trees Gammer 1322

Marb	.68
RE	.67
RADG	.19
DMI	.11
\$EN	15
HP	14.6
\$M	75
\$B	108
\$C	245

CED	BW	Birth	Wean	Yrlg	CEM	Milk	WR	YR
16	76	-3.3	41	68	12	13	111	111

Sleep all night with this powerful McLendon and keep his daughters; top 3% for DMI, side by side carcass traits



31 RM Hoover Dam 4906

Birthdate: 06/01/24
Tattoo: 4906
Reg: 21265900

SydGen C C & 7

Hoover Dam

Erica of Ellston C124

RM Hoover Dam 1592

Connealy Combination 0188

REM Blackbird 6329

REM Blackbird 1346

G A R Retail Product

RM Sequel 8535

G G Queen 9361

REM Everelda Entense 0023

Bon View New Design 1407

FV Everelda Entense P006

FV Everelda Entense 0153

Marb	.76
RE	.61
RADG	.25
DMI	.40
\$EN	9
HP	12.6
\$M	81
\$B	134
\$C	255

CED	BW	Birth	Wean	Yrlg	CEM	Milk	WR	YR
12	83	-1.3	45	84	9	30	112	108

This good calving ease bull is by a 14 year old cow that has been sending them through this sale for a long time. Pick the numbers you like on this bull. They all add up from low birth to carcass value, indexing 122 for IMF

32 RM Scottsman 4586

Birthdate: 06/05/24
Tattoo: 4586
Reg: 21265846

Ashley Euler

Dunlouse Cortachy Boy D137

Champagne Cherry Bee B117

RM Scottsman 9625

RM Sequel 8535

REM Ruby 1341

Rem Ruby 1331

RM I Trend 7528

REM Natural 1812

Blevins Queen Solution 9629

REM Quality Lady 6332

G G Maverick 530

REM Quality Lady 1349

RM Quality Lady 8391

Marb	.49
RE	.21
RADG	.21
DMI	.84
\$EN	-8
HP	12.3
\$M	65
\$B	102
\$C	197

CED	BW	Birth	Wean	Yrlg	CEM	Milk	WR	YR
-3	102	3.7	65	109	3	28	108	111

Here's a cow bull that will put a lot of big steers on the truck at shipping. His 10 year old dam by RM Natural has a great track record

33 RM Hoover Dam 4546

Birthdate: 05/31/24
Tattoo: 4546
Reg: 21265821

SydGen C C & 7

Hoover Dam

Erica of Ellston C124

RM Hoover Dam 1592

Connealy Combination 0188

REM Blackbird 6329

REM Blackbird 1346

Connealy Impression

Byergo Big Easy 2601

Byergo Miss Elia 6153

REM Lass 1308

S A V Mustang 9134

REM Lass 2307

REM Lass 7325

Marb	.95
RE	.40
RADG	.22
DMI	.15
\$EN	4
HP	11.3
\$M	79
\$B	129
\$C	246

CED	BW	Birth	Wean	Yrlg	CEM	Milk	WR	YR
13	78	-2	44	80	11	31	112	108

A Hoover Dam 1592 with classic XM numbers. He is and comes from several generations of moderate sized cows. He ranks in the top 5% of the breed for DMI, he's high marbling and posts a 1.20 RMY

34 RM Big Easy FJB 4503

Birthdate: 05/12/24
Tattoo: 4503
Reg: 21265919

Connealy Impression

Byergo Big Easy 2601

Byergo Miss Elia 6153

RM Big Easy 0585 FJB

RM 2 Trend 3105

REM Everelda Entense 5361

REM Everelda Entense 8351

Connealy Combination 0188

RM Combination 8806

Blevins Blackcap Beauty

REM Forever Lady 2433

RM 'S Answer 4528

REM Forever Lady 7436

REM Forever Lady 1370

Marb	1.05
RE	.84
RADG	.29
DMI	.57
\$EN	-3
HP	14
\$M	88
\$B	144
\$C	275

CED	BW	Birth	Wean	Yrlg	CEM	Milk	WR	YR
11	71	-1	45	90	11	31	104	115

Not a bad number on this calving ease, "Saturated Fat Club" member. He also posts a 1.28 RMY

35 RM Aviator 0535 4563

Birthdate: 06/01/24
Tattoo: 4563
Reg: 21265907

Koupals B&B Identity

Musgrave Aviator

MCATL Forever Lady 1429-138

RM Aviator 0535

Hunts Calculator 2720

FV Mariah R134

FV Mariah 3151

V A R Reserve 1111

RM Reserve 9804

Blevins Erica 3204

REM Cassie 2370

Connealy Combination 0188

REM Cassie 6375

REM Cassie 4317

Marb	.35
RE	.65
RADG	.19
DMI	.49
\$EN	-1
HP	11.8
\$M	81
\$B	123
\$C	241

CED	BW	Birth	Wean	Yrlg	CEM	Milk	WR	YR
8	78	.5	56	92	12	28	107	107

An easing calving Aviator with over and under performance traits, indexing 113 for ribeye and posting a 1.33 RMY



RM Baron 1653

36 RM Big Easy FJB 4670

Birthdate: 06/21/24
Tattoo: 4670
Reg: 21495580

Marb	.63
RE	.52
RADG	.18
DMI	.83
\$EN	-4
HP	14.6
\$M	110
\$B	115
\$C	259

Connealy Impression

Byergo Big Easy 2601

RM Big Easy 0585 FJB

Byergo Miss Elia 6153
RM 2 Trend 3105
REM Everelda Entense 5361
REM Everelda Entense 8351
Boyd New Day 8005

B/R New Day 454

JVC Ruby of Tiffany A346

B/R Ruby 1224
G A R Predestined
T B A Ruby of Tiffany 9011
T B A Ruby of Tiffany 523

CED	BW	Birth	Wean	Yrlg	CEM	Milk	WR	YR
12	87	-.4	51	88	14	33	116	121

This good FJB is by a perfect uddered, 13 year old cow with a tremendous track record on 11 calves

37 RM McLendon 4535

Birthdate: 05/28/24
Tattoo: 4535
Reg: 21265816

Marb	.88
RE	.31
RADG	.23
DMI	.96
\$EN	-2
HP	12.2
\$M	57
\$B	141
\$C	240

Ashley Euler
Dunlouse Cortachy Boy D137
Champagne Cherry Bee B117

RM McLendon 9599

RM 2 Trend 3105
REM Everelda Entense 5361
REM Everelda Entense 8351
SydGen C C & 7

Hoover Dam

REM Barbaramere 1383

Erica of Ellston C124
Connealy Combination 0188
REM Barbaramere 6398
REM Barbaramere 5305

CED	BW	Birth	Wean	Yrlg	CEM	Milk	WR	YR
10	78	.3	52	97	13	16	95	101

A double bred calving ease bull by one of our favorite sire groups. His over and under performance traits allow you to use him on heifers, not sacrifice weaning weight or increase cow size. This bull also indexed 117 for IMF and 103 for ribeye

38 RM Big Easy FJB 4579

Birthdate: 06/04/24
Tattoo: 4579
Reg: 21265940

Marb	.82
RE	.57
RADG	.21
DMI	.88
\$EN	-18
HP	16
\$M	85
\$B	142
\$C	269

Connealy Impression

Byergo Big Easy 2601

RM Big Easy 0585 FJB

Byergo Miss Elia 6153
RM 2 Trend 3105
REM Everelda Entense 5361
REM Everelda Entense 8351
Connealy Consensus

Connealy Combination 0188

REM Queenie 7357

Black Cayra of Conanga 8127
S A V Mustang 9134
REM Queenie 5339
REM Queenie 9308

CED	BW	Birth	Wean	Yrlg	CEM	Milk	WR	YR
0	103	3	71	114	11	22	118	118

Every year this "Little Cow" produces a stellar bull and she has done it again with this champ. One of highest WDA bulls in the sale; high HP, top 30% of the breed for DMI and indexing 124 for ribeye. His brothers both ended up on the Cross 4 Ranch in Miles City.

39 RM Big Easy 1518 4818

Birthdate: 06/12/24
Tattoo: 4818
Reg: 21300785

Marb	.46
RE	.25
RADG	.21
DMI	.79
\$EN	5
HP	12.5
\$M	77
\$B	90
\$C	194

Connealy Impression

Byergo Big Easy 2601

RM Big Easy 1518

Byergo Miss Elia 6153
S A V Mustang 9134
REM Lass 3339
REM Lass 7325
Cole Creek Black Cedar

Cole Creek Black Seal 230

SMB Database Queen 5864

Cole Creek Juanada G 53T
REM Natural 1812
SMB Database Queen 3825
Blevins Database Queen 3474

CED	BW	Birth	Wean	Yrlg	CEM	Milk	WR	YR
10	79	.9	52	90	7	18	109	108

A good high volume Big Easy grandson by another bred back, 11 year old, consistent producing cow. This bull posts over and under performance traits, positive cow EPDs

40 RM Big Easy FJB 4505

Birthdate: 05/13/24
Tattoo: 4505
Reg: 21265920

Marb	.84
RE	.70
RADG	.20
DMI	.70
\$EN	-6
HP	12.4
\$M	42
\$B	132
\$C	213

Connealy Impression

Byergo Big Easy 2601

RM Big Easy 0585 FJB

Byergo Miss Elia 6153
RM 2 Trend 3105
REM Everelda Entense 5361
REM Everelda Entense 8351
Dunlouse Cortachy Boy

RM Cortachy Boy 9501

REM Della 2321

REM Miss Shoshone 7354
V A R Reserve 1111
REM Della 0376
REM Della 6438

CED	BW	Birth	Wean	Yrlg	CEM	Milk	WR	YR
8	85	1.3	47	86	6	18	110	105

This standout bull comes from a long line of cows that perform well. He posts classic Reminisce EPDs across the board and his side by side carcass traits are just icing on the cake



41 RM Big Easy FJB 4583

Birthdate: 06/24/24
Tattoo: 4583
Reg: 21265942

Marb	1.12
RE	.71
RADG	.25
DMI	.65
\$EN	0
HP	15.1
\$M	102
\$B	154
\$C	302

Connealy Impression
Byergo Big Easy 2601
Byergo Miss Ella 6153

RM Big Easy 0585 FJB

RM 2 Trend 3105
REM Everelda Entense 5361
REM Everelda Entense 8351
G G Maverick 530

REM Barbaramere Jet 4346

FV Barbaramere Jet T023
RM I Trend 7528
REM Barbaramere Jet 0375
FV Barbaramere Jet T023

CED	BW	Birth	Wean	Yrlg	CEM	Milk	WR	YR
18	83	-1.8	53	97	17	27	112	112

A lot to talk about here. This high performing FJB is out of Dunlop's dam and she did it again. This proud member of the "Saturated Fat Club" posts over and under performance EPDs. He is in the top DMI, HP and indexed 127 for IMF and 107 for RE. He is not recommended to use on small heifers



REM Barbaramere Jet 4346 - Dam Lot 41

42 RM 2Trend 038 4640

Birthdate: 06/20/24
Tattoo: 4640
Reg: 21265867

Marb	.36
RE	.38
RADG	.21
DMI	1.39
\$EN	-3
HP	9
\$M	85
\$B	109
\$C	226

RM 2 Trend 3105
RM 2 Trend 6592
REM Dutchess 9319
Sitz Investment 6602
Sitz Pride 2126
Sitz Pride 797
Connealy Consensus
Connealy Combination 0188
Black Cayra of Conanga 8127

Cactus 2 Trend 038

REM Lass Mission 8311

REM Natural 1812
REM Lass Mission 6337
REM Lass Mission 1379

CED	BW	Birth	Wean	Yrlg	CEM	Milk	WR	YR
6	90	.3	56	104	4	35	114	111

Here is a good, high performing 2 Trend grandson by a cow that has produced several sale favorites before

43 RM McLendon 4511

Birthdate: 05/17/24
Tattoo: 4511
Reg: 21265807

Marb	.62
RE	.48
RADG	.22
DMI	.12
\$EN	2
HP	11.7
\$M	59
\$B	106
\$C	196

Ashley Euler
Dunlouse Cortachy Boy D137
Champagne Cherry Bee B117

RM McLendon 9599

RM 2 Trend 3105
REM Everelda Entense 5361
REM Everelda Entense 8351
Koupals B&B Identity

REM Mariah 0325

Musgrave Aviator
MCATL Forever Lady 1429-138
Hunts Calculator 2720
FV Mariah R134
FV Mariah 3151

CED	BW	Birth	Wean	Yrlg	CEM	Milk	WR	YR
2	83	1.1	52	89	4	27	119	109

Thick, wide, and deep on a moderate frame. Over and under performance EPDs, top 5% for DMI, and positive cow numbers

44 RM Scottsman 4568

Birthdate: 06/01/24
Tattoo: 4568
Reg: 21265838

Marb	.94
RE	.47
RADG	.19
DMI	1.30
\$EN	23
HP	12.2
\$M	74
\$B	136
\$C	250

Ashley Euler
Dunlouse Cortachy Boy D137
Champagne Cherry Bee B117

RM Scottsman 9625

RM Sequel 8535
REM Ruby 1341
Rem Ruby 1331
Connealy Consensus
Connealy Combination 0188
Black Cayra of Conanga 8127

REM Forever Lady 8353

REM Normandy 2907
REM Forever Lady 5308
REM Forever Lady 3328

CED	BW	Birth	Wean	Yrlg	CEM	Milk	WR	YR
3	86	-.3	53	95	0	14	107	118

Another one of Talitha's favorite bulls and she knows how to pick them. She weans some of the heaviest calves in the country every fall and she does it with bulls like this one, using over and under performance traits. This bull also indexed 133 for IMF and 115 for RE.

4.5 RM McLendon 4547

Birthdate: 05/31/24
Tattoo: 4547
Reg: 21265822

Ashley Euler
Dunlouise Cortachy Boy D137
Champagne Cherry Bee B117

RM McLendon 9599

RM 2 Trend 3105
REM Everelda Entense 5361

REM Everelda Entense 8351
Koupals B&B Identity

Musgrave Aviator

MCATL Forever Lady 1429-138

REM Lass 1335

V A R Reserve 1111

REM Lass 9342

REM Lass 7435

Marb	.50
RE	.65
RADG	.19
DMI	.72
\$EN	-9
HP	10.9
\$M	48
\$B	112
\$C	193

CED	BW	Birth	Wean	Yrlg	CEM	Milk	WR	YR
7	80	.9	52	88	10	20	107	108

This is a full brother to one of last year's favorite McClendon sons. Same game here. Top maternal traits; over and under performance traits and side by side carcass EPDs

4.8 RM Big Easy FJB 4584

Birthdate: 06/05/24
Tattoo: 4584
Reg: 21267173

Connealy Impression
Byergo Big Easy 2601
Byergo Miss Elia 6153

RM Big Easy 0585 FJB

RM 2 Trend 3105
REM Everelda Entense 5361

REM Everelda Entense 8351
Koupals B&B Identity

Musgrave Aviator

MCATL Forever Lady 1429-138

REM Queen Bea Structure

REM Natural 1812

REM Queen Bea Structure
G C Queen Bea Structure 58

Marb	1.08
RE	.80
RADG	.25
DMI	.64
\$EN	8
HP	13.1
\$M	75
\$B	164
\$C	288

CED	BW	Birth	Wean	Yrlg	CEM	Milk	WR	YR
6	71	.1	53	96	16	19	99	100

Here is a calving ease special with over and under performance traits, positive cow traits and a proud member of the "Saturated Fat Club." He also indexed 118 for IMF and 111 for RE and posts a 1.31 RMY

4.6 RM Reserve 0581 4646

Birthdate: 06/21/24
Tattoo: 4646
Reg: 21267180

B/R New Day 454
V A R Reserve 1111

RM Reserve 0581

Sandpoint Blackbird 8809
G G Maverick 530

REM Quality Lady 1349

RM Quality Lady 8391

G A R Predestined

PA Power Tool 9108

Shamrocks Beebee Queen 3095

JVC Erroline C46

S S Objective T510 0T26

Bear Creek Erroline X011

Murphys S V F Erroline 2M

Marb	.59
RE	.97
RADG	.18
DMI	.78
\$EN	6
HP	10
\$M	87
\$B	126
\$C	250

CED	BW	Birth	Wean	Yrlg	CEM	Milk	WR	YR
10	85	.2	64	99	13	29	107	103

One of the best over and under performance bulls in the sale. He has solid numbers across the board; he posts very high side by side carcass traits.



JVC Erroline C46 - Dam Lot 46

4.7 RM Big Easy FJB 4522

Birthdate: 05/20/24
Tattoo: 4522
Reg: 21265928

Connealy Impression
Byergo Big Easy 2601

RM Big Easy 0585 FJB

Byergo Miss Elia 6153

RM 2 Trend 3105

REM Everelda Entense 5361

REM Everelda Entense 8351

B/R New Day 454

V A R Reserve 1111

Sandpoint Blackbird 8809

REM Barbaramere 0425

Connealy Combination 0188

REM Barbaramere 7345

REM Barbaramere 7314

Marb	.76
RE	.47
RADG	.23
DMI	.69
\$EN	-5
HP	12.1
\$M	71
\$B	136
\$C	247

CED	BW	Birth	Wean	Yrlg	CEM	Milk	WR	YR
10	88	.9	55	99	13	21	105	97

Another good performing FJB son with solid EPDs across the board. He ranks in the top 2% of the breed for DMI; he indexed 113 for IMF and 104 for RE

4.9 RM Combination 8806 4630

Birthdate: 06/29/24
Tattoo: 4630
Reg: 21268198

Connealy Consensus
Connealy Combination 0188
Black Cayra of Conanga 8127

RM Combination 8806

Blevins Band Design 9817

Blevins Blackcap Beauty 2438

Blevins Blackcap Beauty

Connealy Impression

Byergo Big Easy 2601

Byergo Miss Elia 6153

REM Primrose 0353

REM's Answer 2701

REM Primrose 4343

REM Primrose 8353

Marb	.78
RE	.61
RADG	.20
DMI	.30
\$EN	13
HP	12.5
\$M	89
\$B	111
\$C	233

CED	BW	Birth	Wean	Yrlg	CEM	Milk	WR	YR
18	76	-3.6	37	67	11	31	108	103

You will find this great calving ease Combination grandson. The last 2 brothers by this cow were sale favorites as well. His performance matches his EPDs across the board. He has side by side carcass traits and posts a 1/33 RMY

50 RM Hoover Dam 4803

Birthdate: 05/17/24
Tattoo: 4803
Reg: 21300782

SydGen C C & 7
Hoover Dam

RM Hoover Dam 1592

Erica of Ellston C124
Connealy Combination 0188
REM Blackbird 6329

REM Blackbird 1346
V A R Reserve 1111
RM Reserve 9804

SMB Blackbird 2890

Blevins Erica 3204
Connealy Combination 0188
REM Blackbird 8332

MJB Blackbird 6735

Marb	.75
RE	1.11
RADG	.25
DMI	.90
\$EN	-7
HP	12.1
\$M	83
\$B	161
\$C	292

CED	BW	Birth	Wean	Yrlg	CEM	Milk	WR	YR
9	76	-2	65	113	6	28	92	108

This is a sure shot calving bull with high carcass EPDs to top it off

53 RM Big Easy FJB 4578

Birthdate: 06/03/24
Tattoo: 4578
Reg: 21265939

Connealy Impression
Byergo Big Easy 2601

RM Big Easy 0585 FJB

Byergo Miss Elia 6153
RM 2 Trend 3105
REM Everelda Entense 5361

REM Everelda Entense 8351
REM's Answer 2701
RM 'S Answer 4528

REM Queen Rain 8320

REM Falcon 0305
JVC Bismarck 5682 060
RMA Queen Rain 4230

Blevins Queen Rain 9603

Marb	.43
RE	.60
RADG	.23
DMI	.67
\$EN	-7
HP	13.2
\$M	51
\$B	117
\$C	203

CED	BW	Birth	Wean	Yrlg	CEM	Milk	WR	YR
7	91	.9	48	91	7	27	108	96

A good FJB with classic Reminisce EPDs across the board. His 8 year old dam is a good uddered, broody cow; he posts side by side carcass EPDs and tops it off with a 1.33 RMY

51 RM Big Easy FJB 4507

Birthdate: 05/13/24
Tattoo: 4507
Reg: 21265921

Connealy Impression
Byergo Big Easy 2601

RM Big Easy 0585 FJB

Byergo Miss Elia 6153
RM 2 Trend 3105
REM Everelda Entense 5361

REM Everelda Entense 8351
Dunlouse Cortachy Boy

RM Scottsman 9625
REM Ruby 1341

REM Barbaramere 2390

RM Black Seal 5531
REM Barbaramere 9469
REM Barbaramere 6398

Marb	.81
RE	.19
RADG	.22
DMI	.81
\$EN	8
HP	13.7
\$M	94
\$B	125
\$C	256

CED	BW	Birth	Wean	Yrlg	CEM	Milk	WR	YR
8	65	0	49	86	10	23	101	106

One of our favorite cow families here. AN FJB by a Scottsman daughter with classic Reminisce performance EPDs, sleep during calving and load good big calves in the fall with this bull.

54 RM Reserve 0581 4635

Birthdate: 06/19/24
Tattoo: 4635
Reg: 21265863

B/R New Day 454
V A R Reserve 1111

RM Reserve 0581

Sandpoint Blackbird 8809
G G Maverick 530
REM Quality Lady 1349

RM Quality Lady 8391
S A V Final Answer 0035
S A V Mustang 9134

REM Blackbird 4320

S A V Emblynette 7415
G A R Retail Product
REM Blackbird 9332

REM Blackbird 6331

Marb	.86
RE	.45
RADG	.22
DMI	.51
\$EN	-10
HP	13.2
\$M	71
\$B	135
\$C	246

CED	BW	Birth	Wean	Yrlg	CEM	Milk	WR	YR
8	92	2	52	93	10	33	104	100

Here's one that will be affordable. He comes from a long line of old cows. He posts over and under performance EPDs and good carcass EPDs.

52 RM Scottsman 4603

Birthdate: 06/08/24
Tattoo: 4603
Reg: 21265852

Ashley Euler
Dunlouse Cortachy Boy D137
Champagne Cherry Bee B117

RM Scottsman 9625

RM Sequel 8535
REM Ruby 1341

Rem Ruby 1331
Cole Creek Black Cedar

Cole Creek Black Seal 230
Cole Creek Juanada G 53T

REM Gammer 5391

Connealy Onward
RMV Gammer 8034
Three Trees Gammer 1322

Marb	.83
RE	.58
RADG	.19
DMI	.91
\$EN	4
HP	12.1
\$M	86
\$B	127
\$C	251

CED	BW	Birth	Wean	Yrlg	CEM	Milk	WR	YR
3	96	2.2	53	93	6	21	103	106

This is a powerhouse Scottsman by an 11 year old good cow, bred back to calve again. Over and under performance traits; positive cow traits and carcass traits. He posts 113 IMF index.



55 RM Aviator 0535 4616

Birthdate: 06/12/24
Tattoo: 4616
Reg: 21265911

Marb	.58
RE	.27
RADG	.24
DMI	-.31
\$EN	1
HP	10.3
\$M	63
\$B	130
\$C	232

Musgrave Aviator
Koupals B&B Identity
MCATL Forever Lady 1429-138
Hunts Calculator 2720
FV Mariah R134
FV Mariah 3151
Connealy Consensus
0188
Black Cayra of Conanga 8127
Connealy Combination
0188
Black Cayra of Conanga 8127
REM Queen 6413
Rock'n D Proficient 2915
Blevins Queen 2416
Blevins Solution Queen 3420

CED	BW	Birth	Wean	Yrlg	CEM	Milk	WR	YR
6	86	0	52	88	12	19	102	104

This good bull is by a 10 year old cow, bred back again. He ranks in the top 1% of the breed for DMI. He posts over and under performance traits and checks all the cow trait boxes.



REM Queen 6413 - Dam Lot 55

56 RM 2Trend 038 4665

Birthdate: 06/29/24
Tattoo: 4665
Reg: 21265877

Marb	.62
RE	.10
RADG	.24
DMI	.92
\$EN	1
HP	8.7
\$M	68
\$B	106
\$C	205

RM 2 Trend 6592
RM 2 Trend 3105
REM Dutchess 9319
Sitz Investment 660Z
Sitz Pride 2126
Sitz Pride 797
Connealy Consensus
0188
Black Cayra of Conanga 8127
Connealy Combination
0188
Black Cayra of Conanga 8127
REM Miss Shoshone 6436
G G Maverick 530
MJB Miss Shoshone 1722
FV Miss Shoshone R401

CED	BW	Birth	Wean	Yrlg	CEM	Milk	WR	YR
5	84	1.5	61	106	-1	23	101	98

As hard as we try to keep our YW EPDs under 100; sometimes we can't, and shame on this GOOD 2 Trend for breaking the rules, but you can't stop the good ones from performing and his 10 year dam will do it again this year!

58 RM Big Easy FJB 4812

Birthdate: 06/05/24
Tattoo: 4812
Reg: 21300784

Marb	.81
RE	.43
RADG	.26
DMI	.78
\$EN	-15
HP	14.2
\$M	58
\$B	140
\$C	240

Connealy Impression
Byergo Big Easy 2601
Byergo Miss Elia 6153
RM Big Easy 0585 FJB
RM 2 Trend 3105
REM Everelda Entense 5361
REM Everelda Entense 8351
B/R New Day 454
V A R Reserve 1111
Sandpoint Blackbird 8809
SMB Blackbird 9852
BAR Back to Future 8502 TP8
SMB Blackbird 3826
M A R Blackbird 2195

CED	BW	Birth	Wean	Yrlg	CEM	Milk	WR	YR
9	88	1	59	105	7	12	93	97

Wide deep and heavy describes this Lot best. It best describes his dam too. A lot of performance with extra marbling here.

57 RM Big Easy FJB 4566

Birthdate: 06/01/24
Tattoo: 4566
Reg: 21265935

Marb	.68
RE	.33
RADG	.25
DMI	.12
\$EN	4
HP	12.3
\$M	79
\$B	106
\$C	216

Connealy Impression
Byergo Big Easy 2601
Byergo Miss Elia 6153
RM Big Easy 0585 FJB
RM 2 Trend 3105
REM Everelda Entense 5361
REM Everelda Entense 8351
Connealy Consensus
0188
Black Cayra of Conanga 8127
Connealy Combination
0188
Black Cayra of Conanga 8127
REM Queen 7304
S A V Mustang 9134
REM Queen 5404
G G Queen 9361

CED	BW	Birth	Wean	Yrlg	CEM	Milk	WR	YR
14	77	-2.1	41	79	13	33	99	107

A full brother to one of last year's favorites and he is made the same way. A calving ease, big stout bull by one of our "Little Cows".

59 RM Aviator 0535 4619

Birthdate: 06/14/24
Tattoo: 4619
Reg: 21265912

Marb	.83
RE	.60
RADG	.24
DMI	.56
\$EN	-14
HP	11
\$M	55
\$B	141
\$C	238

Koupals B&B Identity
Musgrave Aviator
MCATL Forever Lady 1429-
Hunts Calculator 2720
RM Aviator 0535
FV Mariah R134
FV Mariah 3151
RM 'S Answer 4528
REM Debonaire 7572
REM Lass 5306
REM Barbaramere 0436
RM 2 Trend 3105
REM Barbaramere 8313
REM Barbaramere 6398

CED	BW	Birth	Wean	Yrlg	CEM	Milk	WR	YR
6	95	1.3	52	95	16	25	94	106

Classic XM EPDs, side by side carcass traits, indexing 117 for IMF and 104 for RE

60 RM Scottsman 4205

Birthdate: 06/24/24
Tattoo: 4205
Reg: 21265737

Ashley Eular
Dunlouise Cortachy Boy D137
Champagne Cherry Bee B117

RM Scottsman 9625

RM Sequel 8535
REM Ruby 1341

Rem Ruby 1331
Connealy Combination 0188

RM Baron 5811

G G Queen 9361

XY Juanadamere 9244

RM 2 Trend 3105

MJB Juanadamere 6730
Cole Creek Juanadamere 154

Marb	.59
RE	.39
RADG	.15
DMI	1.12
\$EN	5
HP	10.9
\$M	105
\$B	124
\$C	266



Reference Sire - RM Baron 5811

CED	BW	Birth	Wean	Yrlg	CEM	Milk	WR	YR
2	93	1.8	65	95	7	33	113	103

A Scottsman Baron cross you will like. This good cow puts it all in on every calf. Look at his over and under performance EPDs! All the cow traits are marked as well too.

61 RM Scottsman 4554

Birthdate: 05/31/24
Tattoo: 4554
Reg: 21265824

Ashley Eular
Dunlouise Cortachy Boy D137
Champagne Cherry Bee B117

RM Scottsman 9625

RM Sequel 8535
REM Ruby 1341

Rem Ruby 1331
S A V Final Answer 0035

S A V Mustang 9134

S A V Emblynette 7415

REM Queen Bea Structure

REM Natural 1812
REM Queen Bea Structure
G C Queen Bea Structure 58

Marb	.50
RE	.47
RADG	.23
DMI	.18
\$EN	7
HP	13.3
\$M	65
\$B	127
\$C	230

CED	BW	Birth	Wean	Yrlg	CEM	Milk	WR	YR
-3	86	2.4	43	81	6	25	105	103

Scottsman x Mustang x Natural. That has been a cow making combination here, with classic XM EPDs, top DMI and side by side carcass traits. His 11 year old dam is bred back to calve again this year.

62 RM McLendon 4809

Birthdate: 05/31/24
Tattoo: 4809
Reg: 21268200

Ashley Eular
Dunlouise Cortachy Boy D137
Champagne Cherry Bee B117

RM McLendon 9599

RM 2 Trend 3105
REM Everelda Entense 5361

REM Everelda Entense 8351
B/R New Day 454

V A R Reserve 1111

Sandpoint Blackbird 8809

SMB Blackbird 1885

BAR Back to Future 8502 TP8
SMB Blackbird 3826
M A R Blackbird 2195

Marb	.49
RE	.51
RADG	.21
DMI	.03
\$EN	8
HP	10.6
\$M	58
\$B	109
\$C	199

CED	BW	Birth	Wean	Yrlg	CEM	Milk	WR	YR
11	75	-1	46	81	11	13	98	103

Here is another brother to one of the highly sought after McClendon sons we had last year and I think he will definitely command the same attention, but his EPDs are nice too.

63 RM Big Easy FJB 4593

Birthdate: 06/07/24
Tattoo: 4593
Reg: 21265945

Connealy Impression
Byergo Big Easy 2601
Byergo Miss Elia 6153

RM Big Easy 0585 FJB

RM 2 Trend 3105
REM Everelda Entense 5361
REM Everelda Entense 8351
G G Maverick 530

RM Maverick 530 9912
FV Barbaramee Jet T023

REM Della 5326

RM Sequel 8535
REM Della 1328
REM Della 7321

Marb	.07
RE	.39
RADG	.23
DMI	.77
\$EN	-1
HP	14.2
\$M	90
\$B	79
\$C	192

CED	BW	Birth	Wean	Yrlg	CEM	Milk	WR	YR
-2	101	3	54	97	10	26	101	100

You find the bull by this cow every year, no matter where I put him in the sale order. He is a good, long bull with over and under performance traits, good HP, top 25% DMI and a 1.20 RMY

64 RM Big Easy FJB 4509

Birthdate: 05/16/24
Tattoo: 4509
Reg: 21265922

Connealy Impression
Byergo Big Easy 2601
Byergo Miss Elia 6153

RM Big Easy 0585 FJB

RM 2 Trend 3105
REM Everelda Entense 5361
REM Everelda Entense 8351
Connealy Combination 0188

RM Combination 7519
REM Miss Baranda 4387

REM Erica Traveler 2320

G G Maverick 530
SMB Erica Traveler 1803
Blevins Erica Traveler 7226

Marb	.66
RE	.75
RADG	.20
DMI	1.41
\$EN	-3
HP	12.2
\$M	82
\$B	114
\$C	230

CED	BW	Birth	Wean	Yrlg	CEM	Milk	WR	YR
10	69	.2	50	92	11	24	95	98

A very good FJB by another "Little Cow." You'll like him and you can use him on heifers. He comes with side by side carcass traits, posting a 1.34 RMY

66 RM Big Easy FJB 4536

Birthdate: 05/28/24
Tattoo: 4536
Reg: 21265931

Marb	.58
RE	.73
RADG	.22
DMI	.64
\$EN	-1
HP	14.9
\$M	63
\$B	117
\$C	215

Connealy Impression
Byergo Big Easy 2601
Byergo Miss Elia 6153

RM Big Easy 0585 FJB

RM 2 Trend 3105
REM Everelda Entense 5361
REM Everelda Entense 8351
RM I Trend 7528

REM Natural 1812
Blevins Queen Solution 9629

REM Everelda 6430

Sitz Dash 10277
Ox Bow Everelda 024
Ox Bow Everelda 8121

CED	BW	Birth	Wean	Yrlg	CEM	Milk	WR	YR
6	77	.7	56	98	10	7	97	94

3 generations of perfect uddered dams behind this bull along with great performance EPDs, good HP and side by side carcass EPDs.

69 RM Hoover Dam 1505 4552

Birthdate: 05/31/24
Tattoo: 4552
Reg: 21265951

Marb	.70
RE	.71
RADG	.22
DMI	.47
\$EN	1
HP	15
\$M	116
\$B	139
\$C	296

SydGen C C & 7
Hoover Dam

RM Hoover Dam 1505

Erica of Ellston C124
RM Sequel 8535
REM Winny 1338
RM Winny 8302
V A R Reserve 1111

RM Reserve 9804
Blevins Erica 3204

REM Barbaramere 2329

RM Combination 7201
REM Barbaramere 0459
REM Barbaramere 4222

CED	BW	Birth	Wean	Yrlg	CEM	Milk	WR	YR
13	70	-1.7	59	96	10	37	108	103

Everytime I think I missed a good bull for the front end of the sale, I find another one like this one.

67 RM Hoover Dam 4654

Birthdate: 06/23/24
Tattoo: 4654
Reg: 21265874

Marb	1.17
RE	.71
RADG	.24
DMI	.40
\$EN	-10
HP	14.3
\$M	81
\$B	159
\$C	287

SydGen C C & 7
Hoover Dam
Erica of Ellston C124

RM Hoover Dam 1601

RM Sequel 8535
REM Winny 1338
RM Winny 8302
JVC Bismarck 5682 060

REM Bismarck 2806
Blevins Gamble Design 5405

REM Primrose 6404

G G Maverick 530
REM Primrose 8353
FV Primrose 5314

CED	BW	Birth	Wean	Yrlg	CEM	Milk	WR	YR
13	76	-1.6	47	89	12	37	86	98

A good heifer bull with classic XM performance EPDs, high HP, low DMI and he is an official member of the "Saturated Fat Club," in fact he is the chairman of the club with a 1.17 IMF EPD!

70 RM McLendon 4533

Birthdate: 05/27/24
Tattoo: 4533
Reg: 21265815

Marb	.64
RE	.52
RADG	.20
DMI	.56
\$EN	3
HP	14.7
\$M	79
\$B	114
\$C	227

Ashley Eular
Dunlouis Cortachy Boy D137
Champagne Cherry Bee B117

RM McLendon 9599

RM 2 Trend 3105
REM Everelda Entense 5361
REM Everelda Entense 8351
Koupals B&B Identity

Musgrave Aviator
MCATL Forever Lady 1429-138

REM Quality Lady 1399

RM Black Seal 5515
REM Quality Lady 7406
REM Quality Lady 5331

CED	BW	Birth	Wean	Yrlg	CEM	Milk	WR	YR
12	78	.1	47	84	13	24	100	100

A big performance bull by another "Little Cow". That is the increasing result of using over and under performance EPDs... And you can use this good bull on heifers. His side by side carcass traits will add value to your calf crop too.

68 RM Big Easy 1518 4597

Birthdate: 06/07/24
Tattoo: 4597
Reg: 21267176

Marb	.84
RE	.46
RADG	.22
DMI	.38
\$EN	16
HP	11.6
\$M	99
\$B	123
\$C	259

Connealy Impression
Byergo Big Easy 2601
Byergo Miss Elia 6153

RM Big Easy 1518

S A V Mustang 9134
REM Lass 3339
REM Lass 7325
Cole Creek Black Seal 230

REM Black Seal 5531
REM Quality Lady 2333

REM Barbaramere 9469

Connealy Combination 0188
REM Barbaramere 6398
REM Barbaramere 5305

CED	BW	Birth	Wean	Yrlg	CEM	Milk	WR	YR
12	85	-.6	50	85	15	21	105	100

A Lot of good Reminisce cow families in this bull. His classic XM EPDs show longevity



71 RM 2Trend 038 4817

Birthdate: 06/11/24
Tattoo: 4817
Reg: 21265890

Marb	.48
RE	.47
RADG	.22
DMI	.64
\$EN	-16
HP	13.5
\$M	66
\$B	97
\$C	192

RM 2 Trend 6592 RM 2 Trend 3105

Cactus 2 Trend 038

Sitz Pride 2126

REM Dutchess 9319

Sitz Investment 660Z

Sitz Pride 797

RM I Trend 7528

REM Natural 1812

Blevins Queen Solution 9629

SMB Ann Plains 5868

H A R B High Plains 975 JH

Blevins Ann Plains 5460

Blevins Ann Rito 9M9 6066

CED	BW	Birth	Wean	Yrlg	CEM	Milk	WR	YR
7	80	0	55	96	7	27	93	98

This 2 Trend Grandson has over and under performance traits, good HP and side by side carcass EPDs.



REM Primrose 8303 - Dam Lot 74

73 RM Aviator 0525 4659

Birthdate: 06/26/24
Tattoo: 4659
Reg: 21300778

Marb	.58
RE	.81
RADG	.15
DMI	.33
\$EN	12
HP	13.9
\$M	93
\$B	99
\$C	221

Musgrave Aviator

Koupals B&B Identity

RM Aviator 0525

FV Mariah R134

MCATL Forever Lady 1429-138

Hunts Calculator 2720

RM Baron 5811

FV Mariah 3151

Connealy Combination 0188

REM Erica 9324

REM Erica 9368

G G Queen 9361

RM I Trend 7528

FV Erica P517

CED	BW	Birth	Wean	Yrlg	CEM	Milk	WR	YR
8	69	-.3	52	79	15	32	100	100

Here's an easy calver with performance to burn, low DMI, solid cow traits and side by side carcass traits, indexing 111 for IMF and 105 for RE.

74 RM Big Easy FJB 4567

Birthdate: 06/01/24
Tattoo: 4567
Reg: 21265936

Marb	1.08
RE	.56
RADG	.24
DMI	.32
\$EN	-4
HP	14.7
\$M	88
\$B	136
\$C	264

Byergo Big Easy 2601

Connealy Impression

RM Big Easy 0585 FJB

REM Everelda Entense 5361

Byergo Miss Elia 6153

RM 2 Trend 3105

REM Everelda Entense 8351

Connealy Consensus

Connealy Combination 0188

Black Cayra of Conanga 8127

REM Primrose 8303

REM Primrose 6404

REM Bismarck 2806

REM Primrose 8353

CED	BW	Birth	Wean	Yrlg	CEM	Milk	WR	YR
10	79	-1.3	46	84	9	23	92	101

Another outstanding member of the prestigious "Saturated Fat Club" posting a 1.08 IMF EPD. Nobody goes out to eat a fine meal in search of a dry skinless chicken breast. They pay the most for saturated fat in a prime steak. Bonapetit with this calving ease standout. His cow traits and classic XM performance traits are good.

72 RM 2Trend 038 4629

Birthdate: 06/16/24
Tattoo: 4629
Reg: 21265861

Marb	.91
RE	.66
RADG	.21
DMI	.37
\$EN	-4
HP	10.6
\$M	69
\$B	129
\$C	236

RM 2 Trend 6592 RM 2 Trend 3105

Cactus 2 Trend 038

Sitz Pride 2126

REM Dutchess 9319

Sitz Investment 660Z

Sitz Pride 797

B/R New Day 454

V A R Reserve 1111

Sandpoint Blackbird 8809

REM Esther 4sight 9331

REM Esther 4sight 7383

RM 'S Answer 4528

Blevins Esther 4sight 0442

CED	BW	Birth	Wean	Yrlg	CEM	Milk	WR	YR
6	85	.5	53	88	8	20	97	98

This bull is very similar to lot 70, same good EPDs across the board with extra marbling

75 RM Aviator 0535 4564

Birthdate: 06/01/24
Tattoo: 4564
Reg: 21265908

Marb	.45
RE	.31
RADG	.20
DMI	.31
\$EN	-10
HP	9.7
\$M	35
\$B	85
\$C	145

Musgrave Aviator

Koupals B&B Identity

RM Aviator 0535

FV Mariah R134

MCATL Forever Lady 1429-138

Hunts Calculator 2720

REM Natural 1812

FV Mariah 3151

RM I Trend 7528

Blevins Queen Solution 9629

REM Miss Baranda 3321

REM Miss Baranda 1371

G G Maverick 530

FV Miss Baranda R218

CED	BW	Birth	Wean	Yrlg	CEM	Milk	WR	YR
5	90	2.1	51	87	12	19	103	104

Pretty good performance traits here and his 13 year old dam is bred back...again. That is the Extreme Middle example

76 RM Big Easy FJB 4516

Birthdate: 05/18/24
Tattoo: 4516
Reg: 21265925

Byergo Big Easy 2601
Connealy Impression
Byergo Miss Elia 6153

RM Big Easy 0585 FJB

RM 2 Trend 3105
REM Everelda Entense 5361
REM Everelda Entense 8351
Connealy Combination 0188

RM Combination 7201

REM Dixie 0494

REM Barbaramere 4222
RM Maverick 530 9912
SMB Dixie 5869
SMB Dixie 1318

Marb	.55
RE	.60
RADG	.22
DMI	.45
\$EN	-2
HP	13.6
\$M	87
\$B	130
\$C	256

CED	BW	Birth	Wean	Yrlg	CEM	Milk	WR	YR
6	80	.8	49	84	11	24	95	100

A nice bull you will like, by a young cow we are starting to watch. Classic XM EPDs and side by side carcass traits

77 RM Combination 6544 4560

Birthdate: 06/01/24
Tattoo: 4560
Reg: 21267171

Connealy Consensus
Connealy Combination 0188
Black Cayra of Conanga 8127

RM Combination 6544

S A V Mustang 9134
REM Forever Lady 3328

REM Forever Lady 1370
Koupals B&B Identity

Musgrave Aviator

REM Lass 1408

MCATL Forever Lady 1429-138
REM Natural 1812
A J R Lass 7224

Marb	.28
RE	.94
RADG	.25
DMI	.41
\$EN	12
HP	14.1
\$M	110
\$B	130
\$C	279

CED	BW	Birth	Wean	Yrlg	CEM	Milk	WR	YR
7	84	.3	58	101	15	35	99	108

This high performing Combination grandson will catch your eye. He is another example of over and under performance EPDS and all the cow boxes are checked. The +.94 ribeye is just icing on the cake

78 RM Commando 4539

Birthdate: 05/29/24
Tattoo: 4539
Reg: 21300775

EF Commando 1366
G G Commando 720
G G Della 197

G G Commando 921

SydGen Forward 3773
G G Betty Erica 7141

G G Betty Erica 064
Koupals B&B Identity

Musgrave Aviator

REM Winny 1350

MCATL Forever Lady 1429-
RM Natural 6205
REM Winny 5322

Marb	.52
RE	.46
RADG	.20
DMI	.99
\$EN	-5
HP	9.5
\$M	59
\$B	123
\$C	219

CED	BW	Birth	Wean	Yrlg	CEM	Milk	WR	YR
11	73	-1.1	52	96	14	27	100	105

A stout, calving ease bull with over and under performance traits and side by side carcass EPDs

79 RM Against the Grain 4624

Birthdate: 06/16/24
Tattoo: 4624
Reg: 21265858

Mc Cumber Titanium 5005
Mc Cumber Influence 7121
B Pride 530 of Mc Cumber

FBA Against the Grain

Mc Cumber Mason 352
MA Missy 634

MA Eola 4050
B/R New Day 454

V A R Reserve 1111

REM Lass 0381

Sandpoint Blackbird 8809
S A V Mustang 9134
REM Lass 4315
REM Lass 2336

Marb	.31
RE	.80
RADG	.22
DMI	.51
\$EN	-12
HP	9.4
\$M	37
\$B	113
\$C	184

CED	BW	Birth	Wean	Yrlg	CEM	Milk	WR	YR
-1	85	3	58	96	5	21	89	98

Here is an outcross bull to this program. You'll like his looks, over and under performance traits. We like his dam and his granddam

80 RM Hoover Dam 4540

Birthdate: 05/29/24
Tattoo: 4540
Reg: 21265818

SydGen C C & 7
Hoover Dam

RM Hoover Dam 1592

Erica of Ellston C124
Connealy Combination 0188

REM Blackbird 6329

REM Blackbird 1346
Koupals B&B Identity

Musgrave Aviator

REM Erica 1352

MCATL Forever Lady 1429-138
RM Baron 5811
REM Erica 9348
REM Erica 9368

Marb	.57
RE	.74
RADG	.18
DMI	.59
\$EN	18
HP	8
\$M	76
\$B	132
\$C	247

CED	BW	Birth	Wean	Yrlg	CEM	Milk	WR	YR
11	68	-2.5	51	84	10	22	100	100

Here's a heifer bull with all the traits marked. Calving ease bulls with over and under performance EPDs deliver more live



81 RM Hoover Dam 4902

Birthdate: 05/17/24
Tattoo: 4902
Reg: 21300786

Marb	.56
RE	.54
RADG	.19
DMI	.57
\$EN	-6
HP	9.2
\$M	65
\$B	114
\$C	213

SydGen C C & 7
Hoover Dam

RM Hoover Dam 1592

Erica of Ellston C124
Connealy Combination 0188
REM Blackbird 6329

REM Blackbird 1346
S A V Mustang 9134
RM 2 Trend 3105

RMV Black Magic 0978

REM Juice 1314
REM Natural 1812
RMK Black Magic 5004
REM Black Magic 0050

CED	BW	Birth	Wean	Yrlg	CEM	Milk	WR	YR
8	77	-.1	46	81	9	34	104	105

High performance, over and under EPDs, side by side carcass traits. This kind of bull is becoming pretty typical at Reminisce

83 RM Hoover Dam 4527

Birthdate: 05/24/24
Tattoo: 4527
Reg: 21265811

Marb	.57
RE	.59
RADG	.22
DMI	.16
\$EN	5
HP	13.6
\$M	78
\$B	116
\$C	228

SydGen C C & 7
Hoover Dam
Erica of Ellston C124

RM Hoover Dam 1592

Connealy Combination 0188
REM Blackbird 6329

REM Blackbird 1346
S A V Final Answer 0035
REM's Answer 2701

REM Bonny 7453

Ox Bow Beebe Queen 0146
REM Natural 1812
REM Bonny 3332
Rem Bonny 1321

CED	BW	Birth	Wean	Yrlg	CEM	Milk	WR	YR
11	75	-3.6	42	78	12	33	99	100

This Hoover Dam 1592 will be a sale favorite, if you are picky and want everything.

82 RM Big Easy FJB 4604

Birthdate: 06/08/24
Tattoo: 4604
Reg: 21265946

Marb	.70
RE	.02
RADG	.25
DMI	.18
\$EN	3
HP	13.7
\$M	82
\$B	93
\$C	203

Connealy Impression
Byergo Big Easy 2601

RM Big Easy 0585 FJB

Byergo Miss Elia 6153
RM 2 Trend 3105
REM Everelda Entense 5361
REM Everelda Entense 8351
REM's Answer 2701

RM 'S Answer 4528
REM Falcon 0305

REM Miss Line Drive 7413

JVC Pioneer X080
REM Exts Miss Line Drive
REM Exts Miss Line Drive 835

CED	BW	Birth	Wean	Yrlg	CEM	Milk	WR	YR
0	96	2.7	53	92	2	26	100	105

Big bull by another "Little Cow". Over and under performance EPDs, cow traits checked and he indexed 112 for IMF



REM Miss Line Drive 7413 - Dam lot 82

84 RM Against the Grain 4611

Birthdate: 06/09/24
Tattoo: 4611
Reg: 21265854

Marb	.35
RE	.19
RADG	.14
DMI	.92
\$EN	5
HP	10.9
\$M	76
\$B	91
\$C	194

Mc Cumber Titanium 5005
Mc Cumber Influence 7121
B Pride 530 of Mc Cumber

FBA Against the Grain

Mc Cumber Mason 352
MA Missy 634

MA Eola 4050
Connealy Consensus

Connealy Combination 0188
Black Cayra of Conanga 8127

REM Blackcap 8330

RM 2 Trend 3105
SMB Blackcap 6857
REM Blackcap 9376

CED	BW	Birth	Wean	Yrlg	CEM	Milk	WR	YR
7	84	.7	53	83	6	26	104	98

A nice moderate outcross bull by a good Combination x 2 Trend cow. He posts over and under performance traits and positive cow EPDs.



85 RM Hoover Dam 4581

Birthdate: 06/04/24
Tattoo: 4581
Reg: 21265844

Marb	.08
RE	.59
RADG	.18
DMI	.62
\$EN	6
HP	11.9
\$M	90
\$B	96
\$C	215

Hoover Dam

SydGen C C & 7

Erica of Ellston C124

RM Hoover Dam 1592

REM Blackbird 6329

Connealy Combination 0188

REM Blackbird 1346

Connealy Combination 0188

RM Baron 5811

G G Queen 9361

REM Duchess 8312

REM Duchess 6342

REM Natural 1812

REM Duchess 2331



REM Duchess 8312 - Dam Lot 85

CED	BW	Birth	Wean	Yrlg	CEM	Milk	WR	YR
6	84	-.1	55	89	3	32	112	103

Sleep tight, weigh them up heavy and enjoy all the good traits of this Hoover Dam 1592 bull. His good Baron dam is making a name for herself at Reminisce.



Lot 86 - September 2024

86 RM Scottsman 4574

Birthdate: 06/03/24
Tattoo: 4574
Reg: 21265842

Ashley Euler
Dunlouse Cortachy Boy D137
Champagne Cherry Bee B117

RM Scottsman 9625

REM Ruby 1341

RM Sequel 8535

Rem Ruby 1331

Connealy Combination 0188

Connealy Consensus

Black Cayra of Conanga 8127

REM Blackcap Performiss 6333

REM Blackcap Performiss

G G Maverick 530

Blackcap Performiss 5512

Marb	.70
RE	.27
RADG	.21
DMI	.18
\$EN	15
HP	12.9
\$M	93
\$B	113
\$C	240

CED	BW	Birth	Wean	Yrlg	CEM	Milk	WR	YR
5	87	.3	52	88	12	22	104	94

This Scottsman is a brother to a former Lot one bull, by this perfect shaped and uddered cow - 10 year old cow that is. He is well made too.



REM Linda 1343 - Dam Lot 87

87 RM Hoover Dam 4525

Birthdate: 05/24/24
Tattoo: 4525
Reg: 21265810

Marb	.53
RE	.28
RADG	.20
DMI	.87
\$EN	10
HP	11.9
\$M	90
\$B	94
\$C	212

Hoover Dam

SydGen C C & 7

Erica of Ellston C124

RM Hoover Dam 1592

REM Blackbird 6329

Connealy Combination 0188

REM Blackbird 1346

RM 2 Trend 3105

RM 2Trend 8631

REM Quality Lady 2333

REM Linda 1343

REM Linda 5353

REM Mustang 3902

RM Linda 8308

CED	BW	Birth	Wean	Yrlg	CEM	Milk	WR	YR
14	76	-2.2	41	77	14	42	100	99

You will all find this bull. One of the best heifer bulls/cow makers in the sale. He also posts 113 and 105 for IMF and RE and a 1.22 RMY

88 RM Hoover Dam 4802

Birthdate: 05/20/24
Tattoo: 4802
Reg: 21467178

Marb	.62
RE	.52
RADG	.19
DMI	.48
\$EN	10
HP	9.4
\$M	65
\$B	132
\$C	236

Hoover Dam

SydGen C C & 7

Erica of Ellston C124

RM Hoover Dam 1592

REM Blackbird 6329

Connealy Combination 0188

REM Blackbird 1346

Dunlouse Cortachy Boy

RM Dunlop 9609

REM Barbaramere Jet 4346

SMB Blackcap 2892

REM Blackcap 3367

S A V Mustang 9134

SMB Blackcap 1319

CED	BW	Birth	Wean	Yrlg	CEM	Milk	WR	YR
4	77	-1.1	41	74	5	29	109	98

A good RM Hoover Dam 1592 by one of the prettiest Dunlop daughters in the herd

89 RM Hoover Dam 1601 4641

Birthdate: 06/21/24
Tattoo: 4641
Reg: 21265868

Marb	1.09
RE	.31
RADG	.19
DMI	.72
\$EN	3
HP	13.1
\$M	95
\$B	140
\$C	277

Hoover Dam

SydGen C C & 7

Erica of Ellston C124

RM Hoover Dam 1601

REM Winny 1338

RM Sequel 8535

RM Winny 8302

MCC Daybreak

G A R Anticipation

G A R 5050 New Design 0530

REM Barbaramere Jet 0370

REM Barbaramere Jet 0375

RM I Trend 7528

FV Barbaramere Jet T023

CED	BW	Birth	Wean	Yrlg	CEM	Milk	WR	YR
6	79	.2	51	90	10	34	99	90

This 1601 Hoover Dam posts over and under performance EPDs and is a card carrying member of the "Saturated Fat Club."

90 RM Hoover Dam 4510

Birthdate: 05/16/24
Tattoo: 4510
Reg: 21265806

Marb	.69
RE	.57
RADG	.27
DMI	.43
\$EN	4
HP	10.7
\$M	66
\$B	140
\$C	248

Hoover Dam

SydGen C C & 7

Erica of Ellston C124

RM Hoover Dam 1592

REM Blackbird 6329

Connealy Combination 0188

REM Blackbird 1346

Dunlouse Cortachy Boy

RM Dunlop 9609

REM Barbaramere Jet 4346

REM Daisy Solution 2410

REM Daisy Solution 6422

RM 2 Trend 3105

SMB Daisy Solution 4853

CED	BW	Birth	Wean	Yrlg	CEM	Milk	WR	YR
8	75	-1	44	91	8	35	97	104

Hoover Dam x Dunlop again. It works here; calving ease, good performance and side by side carcass traits.

91 RM Big Easy FJB 4502

Birthdate: 05/12/24
Tattoo: 4502
Reg: 21265918

Marb	.58
RE	.72
RADG	.19
DMI	.47
\$EN	5
HP	16.1
\$M	98
\$B	114
\$C	246

Byergo Big Easy 2601

Connealy Impression

Byergo Miss Elia 6153

RM Big Easy 0585 FJB

REM Everelda Entense 5361

RM 2 Trend 3105

REM Everelda Entense 8351

V A R Reserve 1111

RM Reserve 9804

Blevins Erica 3204

REM Forever Trendy 2354

MVK Forever Trendy 9003

RM Baron 5811

FV Forever Trendy T279

CED	BW	Birth	Wean	Yrlg	CEM	Milk	WR	YR
11	78	.8	50	85	13	26	103	99

A double bred calving ease, FJB 0585 bull with over and under performance traits, solid cow making EPDs; side by side carcass EPDs and posting a 1.28 RMY

92 RM Hoover Dam 1601 4675

Birthdate: 07/13/24
Tattoo: 4675
Reg: 21300779

Marb	1.07
RE	.44
RADG	.23
DMI	0
\$EN	10
HP	9.1
\$M	65
\$B	154
\$C	265

Hoover Dam

SydGen C C & 7

Erica of Ellston C124

RM Hoover Dam 1601

REM Winny 1338

RM Sequel 8535

RM Winny 8302

Connealy Consensus

Connealy Combination 0188

Black Cayra of Conanga 8127

REM Betty 7318

REM Betty 2306

S A V Mustang 9134

REM Betty 0327

CED	BW	Birth	Wean	Yrlg	CEM	Milk	WR	YR
3	85	-1	42	80	6	35	112	106

They all can't be in the top 10, but this bull qualifies and his modest dam does it all the time. He too is a member of the "Saturated Fat Club." It's no longer a conspiracy; It's officially mentioned in the dietary guidelines. Change your eating habits today with this good bull!

93 RM Hoover Dam 4517

Birthdate: 05/18/24
Tattoo: 4517
Reg: 21265809

Marb	.24
RE	.82
RADG	.21
DMI	.79
\$EN	-4
HP	10.9
\$M	70
\$B	132
\$C	241

Hoover Dam

SydGen C C & 7

Erica of Ellston C124

RM Hoover Dam 1592

REM Blackbird 6329

Connealy Combination 0188

REM Blackbird 1346

Dunlouse Cortachy Boy

RM McLendon 9599

REM Everelda Entense 5361

REM Esther of 6EM6 2340

REM Esther of 6EM6 0411

Byergo Big Easy 2601

REM Esther of 6EM6 4395

CED	BW	Birth	Wean	Yrlg	CEM	Milk	WR	YR
3	77	1.9	62	103	4	24	105	100

A good, moderate Hoover Dam X McClendon cross here with some of the highest performance EPDs in the sale

94 RM Against the Grain 4580

Birthdate: 06/04/24
Tattoo: 4580
Reg: 21265843

Marb	.19
RE	.53
RADG	.17
DMI	.10
\$EN	14
HP	11.3
\$M	68
\$B	96
\$C	193

Mc Cumber Titanium 5005
Mc Cumber Influence 7121
B Pride 530 of Mc Cumber

FBA Against the Grain

Mc Cumber Mason 352
MA Missy 634

RM Black Seal 5515

REM Queen Traveler 7424

REM Erica 9368
RM Big West 8543
SMB Queen Traveler 3829
Blevins Queen Traveler 7213

CED	BW	Birth	Wean	Yrlg	CEM	Milk	WR	YR
8	86	-.8	44	72	10	21	106	99

This is another good "Against the Grain 1634" by one of those cows that everyone would pick out of a herd. Josh Donald I don't think you have this bloodline in your cow herd.

95 RM Aviator 0535 4612

Birthdate: 06/11/24
Tattoo: 4612
Reg: 21265910

Marb	.44
RE	.62
RADG	.19
DMI	.05
\$EN	3
HP	11.3
\$M	57
\$B	108
\$C	197

Koupals B&B Identity
Musgrave Aviator
MCATL Forever Lady 1429-138

RM Aviator 0535

Hunts Calculator 2720
FV Mariah R134

FV Mariah 3151
B/R New Day 454
V A R Reserve 1111

REM Blackbird 0371

Sandpoint Blackbird 8809
G A R Retail Product
REM Blackbird 9332
REM Blackbird 6331

CED	BW	Birth	Wean	Yrlg	CEM	Milk	WR	YR
6	81	1.1	48	78	9	28	96	101

A good looking XM bull by a deep sided, high volume XM cow.



96 RM McLendon 4908

Birthdate: 06/03/24
Tattoo: 4908
Reg: 21467177

Marb	.29
RE	.98
RADG	.25
DMI	-.45
\$EN	-1
HP	11.8
\$M	47
\$B	95
\$C	170

Ashley Eular
Dunlouse Cortachy Boy D137
Champagne Cherry Bee B117

RM McLendon 9599

RM 2 Trend 3105
REM Everelda Entense 5361
REM Everelda Entense 8351
SydGen C C & 7

Hoover Dam

Erica of Ellston C124

Rem Gammer 1360

REM Precision 1547
RMV Gammer 4051
RMV Gammer 8034

CED	BW	Birth	Wean	Yrlg	CEM	Milk	WR	YR
8	81	-.7	41	75	7	16	100	100

We would use this McClendon on heifers. He is double bred calving ease. He is also in the top 1% for DMI; one of the biggest ribeye bulls in the sale. Notice the good spread between RADG and DMI

97 RM 2Trend 8631 4668

Birthdate: 06/29/24
Tattoo: 4668
Reg: 21265878

Marb	.43
RE	.62
RADG	.23
DMI	.45
\$EN	-14
HP	13.3
\$M	76
\$B	104
\$C	211

S A V Mustang 9134

RM 2 Trend 3105

REM Juice 1314

RM 2Trend 8631

RM Sequel 8535
REM Quality Lady 2333
RM Quality Lady 8391
Connealy Combination 0188

RM Baron 5811

G G Queen 9361

REM Eulima Precise 9403

G G Maverick 530
REM Eulima Precise 0356
REM Eulima Precise 8361

CED	BW	Birth	Wean	Yrlg	CEM	Milk	WR	YR
6	88	.5	46	86	13	34	95	91

A classic Reminisce XM bull with a good spread between RADG and DMI

98 RM McLendon 4548

Birthdate: 05/31/24
Tattoo: 4548
Reg: 21265823

Marb	.90
RE	.33
RADG	.20
DMI	-.06
\$EN	9
HP	12.5
\$M	80
\$B	121
\$C	237

Ashley Eular
Dunlouse Cortachy Boy D137
Champagne Cherry Bee B117

RM McLendon 9599

RM 2 Trend 3105
REM Everelda Entense 5361
REM Everelda Entense 8351
Koupals B&B Identity

Musgrave Aviator

MCATL Forever Lady 1429-138

REM Esther 4sight 1356

RM Baron 5811
REM Esther 4sight 9454
Blevins Esther 4sight 0442

CED	BW	Birth	Wean	Yrlg	CEM	Milk	WR	YR
10	77	-1.9	45	75	10	22	108	102

A high marbling, calving ease McClendon son

99 RM Big Easy FJB 4587

Birthdate: 06/05/24
Tattoo: 4587
Reg: 21265943

Marb	.64
RE	.66
RADG	.22
DMI	.88
\$EN	11
HP	13.8
\$M	98
\$B	130
\$C	267

Connealy Impression
Byergo Big Easy 2601
Byergo Miss Elia 6153

RM Big Easy 0585 FJB

RM 2 Trend 3105
REM Everelda Entense 5361
REM Everelda Entense 8351
Connealy Combination 0188

RM Baron 5811

REM Erica 9373

G G Queen 9361
RM I Trend 7528
REM Erica 9368
FV Erica P517

CED	BW	Birth	Wean	Yrlg	CEM	Milk	WR	YR
11	80	-1.2	45	83	9	33	105	102

A good combination here from calving ease to carcass traits. All the boxes are checked.



REM Erica 9373 - Dam Lot 99
Lot 99 - September 2024

100 RM Combination 7813 4647

Birthdate: 06/22/24
Tattoo: 4647
Reg: 21265870

Marb	.11
RE	.26
RADG	.22
DMI	-.16
\$EN	-1
HP	13
\$M	98
\$B	107
\$C	237

Connealy Consensus
Connealy Combination 0188
Black Cayra of Conanga 8127

RM Combination 7813

S A V Mustang 9134
FV Bell Sara T278
Connealy Combination 0188

RM Baron 5811

REM Toreby Queen 0470

G G Queen 9361
REM Natural 1812
REM Toreby Queen 5398
REM Toreby Queen 0012

CED	BW	Birth	Wean	Yrlg	CEM	Milk	WR	YR
7	84	-.8	59	93	11	32	98	97

This bull is double bred moderation and thickness with over and under performance trait EPDs

102 RM Scottsman 4530

Birthdate: 05/27/24
Tattoo: 4530
Reg: 21265812

Marb	.62
RE	.46
RADG	.02
DMI	.44
\$EN	13
HP	12.4
\$M	94
\$B	96
\$C	219

Ashley Euler
Dunlouse Cortachy Boy D137
Champagne Cherry Bee B117

RM Scottsman 9625

RM Sequel 8535
REM Ruby 1341
Rem Ruby 1331
Te Mania Berkley B1

REM Barabamere Jet 0340

Te Mania Lowan Z74
RM I Trend 7528
REM Barabamere Jet 0375
FV Barabamere Jet T023

CED	BW	Birth	Wean	Yrlg	CEM	Milk	WR	YR
5	82	.8	44	79	7	20	102	106

A good performing Scottsman with no holes in performance or EPDs

101 RM Hoover Dam 4538

Birthdate: 05/29/24
Tattoo: 4538
Reg: 21265817

Marb	.70
RE	.35
RADG	.18
DMI	1.48
\$EN	12
HP	9.9
\$M	79
\$B	117
\$C	231

SydGen C C & 7
Hoover Dam
Erica of Ellston C124

RM Hoover Dam 1592

Connealy Combination 0188
REM Blackbird 6329
REM Blackbird 1346
Connealy Impression

Byergo Big Easy 2601

REM Winny 1319

Byergo Miss Elia 6153
RM Sequel 8535
REM Winny 1338
RM Winny 8302

CED	BW	Birth	Wean	Yrlg	CEM	Milk	WR	YR
10	68	-1.5	46	85	9	26	93	99

This good bull's brother was admired last year and he will be too. Calving ease, XM EPDs and the cow traits checked

103 RM Hoover Dam 1505 4707

Birthdate: 06/09/24
Tattoo: 4707
Reg: 21265882

Marb	.90
RE	.57
RADG	.17
DMI	.56
\$EN	10
HP	7.3
\$M	67
\$B	140
\$C	249

SydGen C C & 7
Hoover Dam
Erica of Ellston C124

RM Hoover Dam 1505

RM Sequel 8535
REM Winny 1338
RM Winny 8302
B/R New Day 454

V A R Reserve 1111

MJB Miss Lassie 0775

Sandpoint Blackbird 8809
Sitz New Design 458N
Mytty Miss Lassie 77X
M A R Miss Lassie S653

CED	BW	Birth	Wean	Yrlg	CEM	Milk	WR	YR
3	87	2.1	56	88	4	22	104	104

A good performing Hoover dam by a big high volume Reserve daughter. From birth to carcass traits; he fits the Reminisce XM model.

104 RM Big Easy FJB 4519

Birthdate: 05/19/24
Tattoo: 4519
Reg: 21265926

Marb	.62
RE	.46
RADG	.16
DMI	.55
\$EN	9
HP	14.1
\$M	90
\$B	90
\$C	207

Connealy Impression
Byergo Big Easy 2601
Byergo Miss Ella 6153

RM Big Easy 0585 FJB

RM 2 Trend 3105
REM Everelda Entense 5361
REM Everelda Entense 8351
V A R Reserve 1111

RM Reserve 9804

REM Queen Rain 2363

Blevins Erica 3204
RM 'S Answer 4528
REM Queen Rain 8320
RMA Queen Rain 4230

CED	BW	Birth	Wean	Yrlg	CEM	Milk	WR	YR
4	80	1	46	74	8	20	103	98

A bull that checks all the boxes and posts a 1.27 RMY

107 RM 2Trend 038 4638

Birthdate: 06/19/24
Tattoo: 4638
Reg: 21265866

Marb	1.00
RE	.21
RADG	.22
DMI	.09
\$EN	11
HP	10.2
\$M	92
\$B	119
\$C	246

RM 2 Trend 3105
RM 2 Trend 6592
REM Dutchess 9319

Cactus 2 Trend 038

Sitz Investment 6602
Sitz Pride 2126
Sitz Pride 797
Redland Game Day 373
Redland Game Game 325
Redland Eppionia 306

REM Dixie 9463

RM 2 Trend 3105
SMB Dixie 6852
SMB Dixie 1318

CED	BW	Birth	Wean	Yrlg	CEM	Milk	WR	YR
16	74	-5	49	86	8	29	94	95

From calving ease, XM performance EPDs, good cow traits, and by a good cow and a proud member of the "Saturated Fat Club."

105 RM Combination 8806 4596

Birthdate: 06/07/24
Tattoo: 4596
Reg: 21267175

Marb	.54
RE	.54
RADG	.22
DMI	.81
\$EN	2
HP	10.9
\$M	88
\$B	112
\$C	233

Connealy Consensus
Connealy Combination 0188
Black Cayra of Conanga 8127

RM Combination 8806

Blevins Band Design 9817
Blevins Blackcap Beauty 2438
Blevins Blackcap Beauty
B/R New Day 454

V A R Reserve 1111

REM Barbaramere 9383

Sandpoint Blackbird 8809
REM Natural 1812
REM Barbaramere 3340
REM Barbaramere 1342

CED	BW	Birth	Wean	Yrlg	CEM	Milk	WR	YR
6	88	1.4	52	96	1	22	91	94

Solid over and under performance EPDS, side by side carcass EPDs by a high marbling sire

108 RM Hoover Dam 1601 4650

Birthdate: 06/23/24
Tattoo: 4650
Reg: 21268202

Marb	.60
RE	.20
RADG	.17
DMI	.52
\$EN	0
HP	13.5
\$M	106
\$B	91
\$C	224

SydGen C C & 7
Hoover Dam
Erica of Ellston C124

RM Hoover Dam 1601

RM Sequel 8535
REM Winny 1338
RM Winny 8302
Redland Game Day 373
Redland Game Game 325
Redland Eppionia 306

REM Queenie 9472

Cole Creek Black Seal 230
REM Queenie 5102
REM Queenie 3335

CED	BW	Birth	Wean	Yrlg	CEM	Milk	WR	YR
3	81	.2	50	83	2	38	105	102

This Hoover dam is right down the Extreme Middle. He posts several added numbers

106 RM Hoover Dam 4508

Birthdate: 05/13/24
Tattoo: 4508
Reg: 21265805

Marb	.50
RE	.45
RADG	.18
DMI	1.16
\$EN	16
HP	10.7
\$M	94
\$B	106
\$C	231

SydGen C C & 7
Hoover Dam
Erica of Ellston C124

RM Hoover Dam 1592

Connealy Combination 0188
REM Blackbird 6329
REM Blackbird 1346
Soo Line Motive 9016

RM Motive 7541

REM Mariah 2468

REM Blackbird 5320
RM Maverick 530 9912
FV Mariah R134

CED	BW	Birth	Wean	Yrlg	CEM	Milk	WR	YR
12	69	-1.7	48	85	14	26	95	95

Another calving ease Hoover Dam 1592 with high marks on the cow traits and side by side carcass EPDs.

109 RM Combination 8806 4208

Birthdate: 06/19/24
Tattoo: 4208
Reg: 21265948

Marb	.92
RE	.70
RADG	.18
DMI	.87
\$EN	3
HP	15.5
\$M	74
\$B	132
\$C	245

Connealy Consensus
Connealy Combination 0188
Black Cayra of Conanga 8127

RM Combination 8806

Blevins Band Design 9817
Blevins Blackcap Beauty 2438
Blevins Blackcap Beauty
B/R New Day 454

V A R Reserve 1111

RMXY Lady Jaye 0271

Sandpoint Blackbird 8809
O C C You're The One 610Y
JVC Lady Jaye 3374
JVC Lady Jaye Y1111

CED	BW	Birth	Wean	Yrlg	CEM	Milk	WR	YR
7	86	.8	42	80	3	24	101	98

This bull has that "Club Calf" shape to him; you will probably notice his high HP number and his high IMF EPD, indexing 112 for IMF too!

110 RM McLendon 4807

Birthdate: 06/01/24
Tattoo: 4807
Reg: 21265885

Ashley Eular
Dunlouise Cortachy Boy D137
Champagne Cherry Bee B117

RM McLendon 9599

RM 2 Trend 3105
REM Everelda Entense 5361
REM Everelda Entense 8351
Connealy Consensus
Connealy Combination 0188

SMB Barabaramere 7856

Black Cayra of Conanga 8127
Isu Imaging Q 9111
REM Barabaramere 7314
REM Barabaramere 5305

Marb	.55
RE	.49
RADG	.23
DMI	.58
\$EN	7
HP	8.3
\$M	48
\$B	103
\$C	182

CED	BW	Birth	Wean	Yrlg	CEM	Milk	WR	YR
13	84	-3.1	43	85	9	23	96	97

Here we go again, a great calving ease bull with all the boxes checked as well!



REM Primrose 4335 - Dam Lot 113

112 RM Against the Grain 4615

Birthdate: 06/11/24
Tattoo: 4615
Reg: 21265855

Mc Cumber Titanium 5005
Mc Cumber Influence 7121
B Pride 530 of Mc Cumber

FBA Against the Grain

Mc Cumber Mason 352
MA Missy 634
MA Eola 4050
RM I Trend 7528

REM Barabaramere 7329

REM Natural 1812
Blevins Queen Solution 9629
Rem Big West 2336
REM Barabaramere 5305
Rem Barabaramere Juice 2312

Marb	.39
RE	.74
RADG	.21
DMI	.44
\$EN	2
HP	11.2
\$M	70
\$B	102
\$C	202

CED	BW	Birth	Wean	Yrlg	CEM	Milk	WR	YR
7	84	.8	50	90	11	31	87	94

A classic XM rated bull by a beautiful, I mean Gorgeous cow with positive cow traits and posting a 1.23 RMY

113 RM Hoover Dam 4602

Birthdate: 06/08/24
Tattoo: 4602
Reg: 21265851

SydGen C C & 7
Hoover Dam
Erica of Ellston C124

RM Hoover Dam 1592

Connealy Combination 0188
REM Blackbird 6329
REM Blackbird 1346
FV Precision T273

REM Primrose 4335

REM Precision 1547
REM Blackbird 6357
RM Sequel 8535
REM Primrose 1306
REM Primrose 8353

Marb	.49
RE	.61
RADG	.17
DMI	.42
\$EN	4
HP	12
\$M	67
\$B	99
\$C	195

CED	BW	Birth	Wean	Yrlg	CEM	Milk	WR	YR
1	83	1.3	42	71	7	27	101	96

Buy this good Hoover dam just from the cow he is out of. 12 years old, bred back, good udder. If she was a 4 year old cow, this bull's EPDs would have sorted him into the top 25 bulls of this sale.

111 RM Scottsman 9625 4816

Birthdate: 06/08/24
Tattoo: 4816
Reg: 21265889

Ashley Eular
Dunlouise Cortachy Boy D137
Champagne Cherry Bee B117

RM Scottsman 9625

RM Sequel 8535
REM Ruby 1341
Rem Ruby 1331
Connealy Consensus
Connealy Combination 0188

SMB Barabaramere 8855

Black Cayra of Conanga 8127
Rem Big West 2336
REM Barabaramere 5305
Rem Barabaramere Juice 2312

Marb	.67
RE	.33
RADG	.17
DMI	1.04
\$EN	22
HP	10.3
\$M	67
\$B	121
\$C	224

CED	BW	Birth	Wean	Yrlg	CEM	Milk	WR	YR
-7	91	3.9	56	90	3	17	102	100

A good Scottsman out of an extra deep, wide Combination daughter; over and under performance traits and positive cow traits together in this package.

114 Rm Scottsman 4599

Birthdate: 06/08/24
Tattoo: 4599
Reg: 21265849

Ashley Eular
Dunlouise Cortachy Boy D137
Champagne Cherry Bee B117

RM Scottsman 9625

RM Sequel 8535
REM Ruby 1341
Rem Ruby 1331
Connealy Impression
Byergo Big Easy 2601
Byergo Miss Elia 6153

REM Lass 1303

S A V Mustang 9134
REM Lass 3339
REM Lass 7325

Marb	.70
RE	.53
RADG	.13
DMI	.55
\$EN	17
HP	17
\$M	114
\$B	111
\$C	258

CED	BW	Birth	Wean	Yrlg	CEM	Milk	WR	YR
-1	90	3.3	57	85	0	18	94	88

You will see a lot of performance when you look at this bull and his number back it up. Over and under performance EPDs,

115 RM Scottsman 4598

Birthdate: 06/08/24
Tattoo: 4598
Reg: 21265848

Ashley Euler
Dunlouse Cortachy Boy D137
Champagne Cherry Bee B117

RM Scottsman 9625

REM Ruby 1341

V A R Reserve 1111

REM Lass 0424

REM Lass 6402

RM Sequel 8535
Rem Ruby 1331
B/R New Day 454
Sandpoint Blackbird 8809
REM Natural 1812
REM Lass 7325

Marb	.64
RE	.72
RADG	.20
DMI	.51
\$EN	8
HP	12.5
\$M	78
\$B	121
\$C	235

CED	BW	Birth	Wean	Yrlg	CEM	Milk	WR	YR
5	86	.9	47	82	2	22	92	94

Another big stout bull by one of our "Little Cows". XM numbers across the board with side by side carcass traits too. He also posts a 1.20 RMY

118 RM Big Easy FJB 4588

Birthdate: 06/05/24
Tattoo: 4588
Reg: 21265944

Connealy Impression
Byergo Big Easy 2601
Byergo Miss Elia 6153

RM Big Easy 0585 FJB

RM 2 Trend 3105
REM Everelda Entense 5361
REM Everelda Entense 8351
B/R New Day 454

V A R Reserve 1111

REM Clov Juanada 9390

Sandpoint Blackbird 8809
Cole Creek Ridge 1340
Cole Creek Clov Juanada
Cole Creek Juanada Clo 1212

Marb	.89
RE	.30
RADG	.20
DMI	.23
\$EN	3
HP	9.8
\$M	70
\$B	122
\$C	228

CED	BW	Birth	Wean	Yrlg	CEM	Milk	WR	YR
8	92	.2	46	80	9	32	101	98

A full brother to one of last year's top selling bulls going to Challis Creek Cattle Co. He ranks high for phenotype and marbling. His dam's udder is another perfect one!

116 RM Against the Grain 4613

Birthdate: 06/11/24
Tattoo: 4613
Reg: 21300776

Mc Cumber Titanium 5005
Mc Cumber Influence 7121
B Pride 530 of Mc Cumber

FBA Against the Grain

MA Missy 634

Musgrave Aviator

REM Annie 1426

REM Annie 3312

Mc Cumber Mason 352
MA Eola 4050
Koupals B&B Identity
MCATL Forever Lady 1429-138
REM Natural 1812
REM Annie 0395

Marb	.47
RE	.51
RADG	.21
DMI	.45
\$EN	-7
HP	11.8
\$M	48
\$B	93
\$C	169

CED	BW	Birth	Wean	Yrlg	CEM	Milk	WR	YR
2	86	2	52	90	2	29	85	98

Same kind of bull here. There are getting to be a lot of XM bulls, like this one to pick from in the sale.

119 RM combination 7813 4822

Birthdate: 06/05/24
Tattoo: 4822
Reg: 21265892

Connealy Consensus
Connealy Combination 0188
Black Cayra of Conanga 8127

RM Combination 7813

REM Bell Sara 3306

RM 2 Trend 3105

SMB Blackcap 6857

REM Blackcap 9376

S A V Mustang 9134
FV Bell Sara T278
S A V Mustang 9134
REM Juice 1314
GG Maverick 5171
FV Blackcap 8012

Marb	.66
RE	.16
RADG	.19
DMI	.01
\$EN	2
HP	10.3
\$M	71
\$B	101
\$C	202

CED	BW	Birth	Wean	Yrlg	CEM	Milk	WR	YR
14	76	-2.6	41	69	17	34	97	96

Two prominent Reminisce herd bulls stacked right behind this bull; and his 10 year old dam likes her job so well, she bred up to do it again this year. He also posts a 1.27 RMY and he ranks in the top 10% for DMI

117 RM Reserve 0704 4644

Birthdate: 06/21/24
Tattoo: 4644
Reg: 21267179

B/R New Day 454
V A R Reserve 1111
Sandpoint Blackbird 8809

RM Reserve 0704

MJB Barbwire 1720

V A R Reserve 1111

REM Lass 9407

REM Lass 3339

G G Maverick 530
FV Barbwire R458
B/R New Day 454
Sandpoint Blackbird 8809
S A V Mustang 9134
REM Lass 7325

Marb	.77
RE	.31
RADG	.18
DMI	.31
\$EN	5
HP	9.2
\$M	82
\$B	121
\$C	239

CED	BW	Birth	Wean	Yrlg	CEM	Milk	WR	YR
8	77	-1	48	80	5	36	95	93

A good old cow family here and every year, bulls in this family are sought out. This calving ease Reserve Grandson fits the mold.



REM Lass 9407 - Dam Lot 117

120 RM Combination 7813 4821

Birthdate: 06/26/24
Tattoo: 4821
Reg: 21265891

Marb	.53
RE	.44
RADG	.19
DMI	-.15
\$EN	3
HP	11.9
\$M	83
\$B	140
\$C	265

Connealy Consensus
Connealy Combination 0188
Black Cayra of Conanga 8127

RM Combination 7813

S A V Mustang 9134
REM Bell Sara 3306
FV Bell Sara T278
Rem Big West 2336

RM Big West 8543

SMB Queen Traveler 3829

Rem Joyce 1310
B A R Ext Traveler 205
Blevins Queen Traveler
Blevins Queen Design 2154

CED	BW	Birth	Wean	Yrlg	CEM	Milk	WR	YR
4	85	.1	47	78	6	41	108	93

A good bull by a 13 year old cow who raised another one last year. Longevity pays the annual bills in a cowherd. The added value in his side by side carcass traits pays for a few extras.

123 RM McLendon 4504

Birthdate: 05/13/24
Tattoo: 4504
Reg: 21265804

Marb	.60
RE	.54
RADG	.20
DMI	.22
\$EN	22
HP	13.7
\$M	69
\$B	110
\$C	212

Ashley Eular
Dunlouse Cortachy Boy D137
Champagne Cherry Bee B117

RM McLendon 9599

RM 2 Trend 3105
REM Everelda Entense 5361
REM Everelda Entense 8351
SydGen C C & 7

Hoover Dam

REM Gammer 2305

Erica of Ellston C124
Connealy Onward
RMV Gammer 8034
Three Trees Gammer 1322

CED	BW	Birth	Wean	Yrlg	CEM	Milk	WR	YR
11	77	-.9	40	72	11	16	103	102

Hoover Dam 1592 X McClendon. There are several in this sale, pick them if you want a uniform crop of calves with side by side carcass traits too.

121 RM McLendon 4203

Birthdate: 06/03/24
Tattoo: 4203
Reg: 21265735

Marb	.39
RE	.31
RADG	.16
DMI	-.10
\$EN	19
HP	11.5
\$M	64
\$B	86
\$C	176

Ashley Eular
Dunlouse Cortachy Boy D137
Champagne Cherry Bee B117

RM McLendon 9599

RM 2 Trend 3105
REM Everelda Entense 5361
REM Everelda Entense 8351
Sitz Upward 307R

Sitz Upside 547W

BLEVINS EILEEN Upside 5611

Sitz Emma 27T
Connealy Answer 71
Blevins Eileen Answer 1511
Blevins Eileen Enhancer 4322

CED	BW	Birth	Wean	Yrlg	CEM	Milk	WR	YR
11	80	-1.9	44	65	13	14	99	95

This good, calving ease McClendon is out of a high volume, easy fleshing gentle cow. Marcia and I always enjoy tagging her calf in June and she has had 8 of them and will have another this year.

124 RM Reserve 0581 4912

Birthdate: 06/12/24
Tattoo: 4912
Reg: 21265902

Marb	0.05
RE	1.38
RADG	.16
DMI	.54
\$EN	14
HP	8.3
\$M	57
\$B	103
\$C	191

B/R New Day 454

V A R Reserve 1111
Sandpoint Blackbird 8809

RM Reserve 0581

G G Maverick 530
REM Quality Lady 1349
RM Quality Lady 8391
G G Maverick 530

RM Maverick 530 9912
FV Barbaramere Jet T023

RMV Queen Peggy 4055

Bon View New Design 208
FV Queen Peggy P090
Baldrige Queen Peggy L802

CED	BW	Birth	Wean	Yrlg	CEM	Milk	WR	YR
15	87	-1.1	41	73	12	27	92	99

We aren't calling this bull a heifer bull, the AAA is. We recorded his 87# BW. It's your choice, it's a free country. You may want to buy him for the 12 year old cow he is out of OR his 1.38 ribeye EPD, that will help any herd move forward on the rail.

122 RM Hoover Dam 4585

Birthdate: 06/05/24
Tattoo: 4585
Reg: 21265845

Marb	.85
RE	.33
RADG	.22
DMI	1.28
\$EN	-10
HP	9.7
\$M	67
\$B	150
\$C	262

SydGen C C & 7

Hoover Dam

RM Hoover Dam 1592

Erica of Ellston C124
Connealy Combination 0188
REM Blackbird 6329
REM Blackbird 1346
RM Baron 5811

RM Baron 8542

REM Della 1492

REM Primrose Lady 6335
Connealy Combination 0188
REM Della 7340
MJB Della 1725

CED	BW	Birth	Wean	Yrlg	CEM	Milk	WR	YR
7	69	-.4	54	95	3	31	91	97

Another Hoover Dam 1592 calving ease bull with over and under performance EPDs. He is also high marbling and posted a 1.26 RMY

125 RM Big Easy FJB 4608

Birthdate: 06/08/24
Tattoo: 4608
Reg: 21267178

Marb	.31
RE	1.17
RADG	.18
DMI	.41
\$EN	2
HP	13.6
\$M	85
\$B	79
\$C	187

Connealy Impression

Byergo Big Easy 2601
Byergo Miss Elia 6153

RM Big Easy 0585 FJB

RM 2 Trend 3105
REM Everelda Entense 5361
REM Everelda Entense 8351
Connealy Combination 0188

RM Baron 5811

REM Black Magic 9450

G G Queen 9361
REM Natural 1812
REM Black Magic 4376
REM Black Magic 0050

CED	BW	Birth	Wean	Yrlg	CEM	Milk	WR	YR
9	97	1.2	44	77	9	28	92	103

This bull delivers moderation, HP, DMI, positive cows traits and he is big time ribeye bull!



MJB Miss Shoshone 1722 - Dam Lot 128

128 **RM Scottsman 4704**
 Birthdate: 06/05/24
 Tattoo: 4704
 Reg: 21265880

Ashley Euler
 Dunlouse Cortachy Boy D137
 Champagne Cherry Bee B117

RM Scottsman 9625

REM Ruby 1341

G G Maverick 530

MJB Miss Shoshone 1722

Bon View New Design 1407
 FV Miss Shoshone R401
 Fairview Miss Shoshone 3423

Marb	.74
RE	.66
RADG	.20
DMI	-.13
\$EN	9
HP	12.3
\$M	72
\$B	105
\$C	208

CED	BW	Birth	Wean	Yrlg	CEM	Milk	WR	YR
2	89	1.6	46	76	0	20	91	93

This good Scottsman's 15 year dam is still running with the herd. This is how we make money in the business.

126 **RM Aviator 0525 4639**
 Birthdate: 06/20/24
 Tattoo: 4639
 Reg: 21265904

Musgrave Aviator
 Koupals B&B Identity
 MCATL Forever Lady 1429-138

RM Aviator 0525

FV Mariah R134

RM Baron 5811

REM Ruby 8308

REM Ruby 5315

Hunts Calculator 2720

FV Mariah 3151
 Connealy Combination 0188

G G Queen 9361

REM Natural 1812

REM Ruby 1341

Marb	1.00
RE	.51
RADG	.12
DMI	.08
\$EN	19
HP	13.4
\$M	91
\$B	116
\$C	241

CED	BW	Birth	Wean	Yrlg	CEM	Milk	WR	YR
7	73	-1.6	44	64	10	19	96	99

Old cow families on both sides of the pedigree here and EPDs show it. But this calving ease Aviator bull delivers longevity and his "Saturated Fat Club" membership is the only identification he needs to prove it.

129 **Rm Aviator 0525 4666**
 Birthdate: 06/29/24
 Tattoo: 4666
 Reg: 21265905

Musgrave Aviator
 Koupals B&B Identity
 MCATL Forever Lady 1429-138

RM Aviator 0525

FV Mariah R134

RM Baron 5811

REM Barbaramere Jet 8360

RMV Barbaramere Jet 6003
 FV Barbaramere Jet T023

Marb	.44
RE	.37
RADG	.19
DMI	.59
\$EN	8
HP	11.8
\$M	81
\$B	87
\$C	194

CED	BW	Birth	Wean	Yrlg	CEM	Milk	WR	YR
7	87	.8	49	87	11	19	93	99

This is one of the higher WDA bulls by a cow that always produces bulls with XM performance traits and solid cow traits.

127 **RM McLendon 4512**
 Birthdate: 05/17/24
 Tattoo: 4512
 Reg: 21265808

Ashley Euler
 Dunlouse Cortachy Boy D137
 Champagne Cherry Bee B117

RM McLendon 9599

REM Everelda Entense 5361

RM Reserve 9804

REM Eulima Norma 2392

REM Eulima Norma 8335
 REM Eulima Norma 2314

RM 2 Trend 3105
 REM Everelda Entense 8351

V A R Reserve 1111

Blevins Erica 3204

Marb	.64
RE	.44
RADG	.16
DMI	-.44
\$EN	21
HP	15.4
\$M	71
\$B	80
\$C	175

CED	BW	Birth	Wean	Yrlg	CEM	Milk	WR	YR
15	66	-2.3	39	58	9	17	101	101

Here's a good double bred, performance and calving ease McClendon that tops the breed for DMI with powerful cow traits and side by side carcass traits



130 RM Big Easy FJB 4582

Birthdate: 06/04/24
Tattoo: 4582
Reg: 21265941

Marb	1.13
RE	.50
RADG	.19
DMI	-.27
\$EN	2
HP	13.2
\$M	75
\$B	135
\$C	250

Connealy Impression
Byergo Big Easy 2601
Byergo Miss Ella 6153

RM Big Easy 0585 FJB

RM 2 Trend 3105
REM Everelda Entense 5361
REM Everelda Entense 8351
Connealy Consensus
Connealy Combination 0188
Black Cayra of Conanga 8127

REM Barbaramere 9344

Rem Big West 2336
REM Barbaramere 5305
Rem Barbaramere Juice 2312

CED	BW	Birth	Wean	Yrlg	CEM	Milk	WR	YR
13	78	-2.3	41	65	14	29	101	96

Calving ease, old cow families with longevity, great added value EPDs and a member of the "Saturated Fat Club"



REM Barbaramere 9344 - Dam Lot 130

131 RM Reserve 0704 4657

Birthdate: 06/25/24
Tattoo: 4657
Reg: 21265875

Marb	.60
RE	.61
RADG	.18
DMI	1.19
\$EN	-7
HP	13.8
\$M	76
\$B	111
\$C	220

B/R New Day 454
V A R Reserve 1111
Sandpoint Blackbird 8809

RM Reserve 0704

G G Maverick 530
MJB Barbwire 1720
FV Barbwire R458
Connealy Combination 0188

REM Baron 5811
G G Queen 9361

REM Beauty Danny 8356

REM Natural 1812
REM Beauty Danny 5412
Blevins Beauty Danny 0403

CED	BW	Birth	Wean	Yrlg	CEM	Milk	WR	YR
1	91	4	55	95	10	24	96	92

This good Reserve bred bull is bred for longevity and more; over and under performance traits, good HP and side by side carcass traits.

133 RM Combination 7813 4636

Birthdate: 06/19/24
Tattoo: 4636
Reg: 21265864

Marb	.50
RE	.18
RADG	.17
DMI	-.28
\$EN	7
HP	13.6
\$M	86
\$B	82
\$C	192

Connealy Consensus
Connealy Combination 0188
Black Cayra of Conanga 8127

RM Combination 7813

S A V Mustang 9134
REM Bell Sara 3306
FV Bell Sara T278
S A V Mustang 9134

RM 2 Trend 3105
REM Juice 1314

REM Blackbird 6363

REM Precision 1547
REM Blackbird 3353
REM Blackbird 1325

CED	BW	Birth	Wean	Yrlg	CEM	Milk	WR	YR
9	82	-1.7	38	61	8	27	101	100

A Combination X 2 Trend calving bull. We have used these two sires for a long time

132 RM Combination 6544 4576

Birthdate: 06/03/24
Tattoo: 4576
Reg: 21267172

Marb	.89
RE	.29
RADG	.18
DMI	.05
\$EN	16
HP	13.6
\$M	89
\$B	137
\$C	267

Connealy Consensus
Connealy Combination 0188
Black Cayra of Conanga 8127

RM Combination 6544

S A V Mustang 9134
REM Forever Lady 3328
REM Forever Lady 1370

Connealy Consensus
Connealy Combination 0188
Black Cayra of Conanga 8127

REM Linda 6377

S A V Mustang 9134
REM Linda 4323
RM Linda 8308

CED	BW	Birth	Wean	Yrlg	CEM	Milk	WR	YR
5	88	-.4	50	80	5	28	103	93

Moderate calving here on this double bred Combination bull. He comes with over and under performance EPDs, good cow traits and high marbling genetics.

134 RM Scottsman 4815

Birthdate: 06/08/24
Tattoo: 4815
Reg: 21265888

Marb	.48
RE	.48
RADG	.14
DMI	.99
\$EN	21
HP	12.7
\$M	102
\$B	93
\$C	223

Ashley Euler
Dunlouse Cortachy Boy D137
Champagne Cherry Bee B117

RM Scottsman 9625

RM Sequel 8535
REM Ruby 1341
Rem Ruby 1331
Cole Creek Black Cedar

Cole Creek Black Seal 230
Cole Creek Juanada G 53T

SMB Erica Traveler 5866

B A R Ext Traveler 205
Blevins Erica Traveler 7217
Blevins Erica Enhancer 4327

CED	BW	Birth	Wean	Yrlg	CEM	Milk	WR	YR
-2	95	1.6	53	84	4	20	102	99

This bull's a head turner. His numbers are too. Over and under performance traits, all the maternal boxes checked and side by side carcass traits.

135 RM 2Trend 038 4628

Birthdate: 06/16/24
Tattoo: 4628
Reg: 21265860

RM 2 Trend 3105
RM 2 Trend 6592
RM Dutchess 9319
Sitz Investment 660Z
Sitz Pride 2126
Sitz Pride 797
RM I Trend 7528
REM Natural 1812
Blevins Queen Solution 9629
REM Lass 8366
Connealy Combination 0188
REM Lass 6362
REM Lass 3339

Marb	.94
RE	-.17
RADG	.22
DMI	1.02
\$EN	-13
HP	11.8
\$M	74
\$B	112
\$C	219

CED	BW	Birth	Wean	Yrlg	CEM	Milk	WR	YR
8	76	.5	59	101	9	31	100	103

There is a lot of performance and marbling in this calving ease 2 Trend



REM Lass 8366 - Dam Lot 135

136 RM Hoover Dam 4543

Birthdate: 05/29/24
Tattoo: 4543
Reg: 21265820

SydGen C C & 7
Hoover Dam
Erica of Ellston C124
RM Hoover Dam 1592
Connealy Combination 0188
REM Blackbird 6329
REM Blackbird 1346
S A V Final Answer 0035
S A V Mustang 9134
S A V Emblynette 7415
REM Juice 5332
RM I Trend 7528
REM Juice 1314
REM Juice 9343

Marb	.77
RE	.40
RADG	.15
DMI	.16
\$EN	14
HP	13.2
\$M	77
\$B	113
\$C	224

CED	BW	Birth	Wean	Yrlg	CEM	Milk	WR	YR
12	70	-2.7	43	70	7	30	95	94

An easy choice for heifers. These 1592's are snappy with vigor. He is a low DMI and higher marbling bull in this sale

138 RM Scottsman 4609

Birthdate: 06/09/24
Tattoo: 4609
Reg: 21265853

Ashley Eular
Dunlouse Cortachy Boy D137
Champagne Cherry Bee B117
RM Scottsman 9625
RM Sequel 8535
REM Ruby 1341
Rem Ruby 1331
G G Maverick 530
RM Maverick 530 9568
G G Queen 9361
REM Erica 1441
RM 'S Answer 4528
SMB Erica 7855
Blevins Erica 3204

Marb	.96
RE	.14
RADG	.16
DMI	.07
\$EN	21
HP	12.7
\$M	77
\$B	118
\$C	230

CED	BW	Birth	Wean	Yrlg	CEM	Milk	WR	YR
1	87	2.4	37	61	4	20	98	96

Our crew has high phenotype marks on this bull. He is out of old bloodlines and his EPDs show it, so does his marbling.

137 RM Hoover Dam 4606

Birthdate: 06/08/24
Tattoo: 4606
Reg: 21267177

SydGen C C & 7
Hoover Dam
Erica of Ellston C124
RM Hoover Dam 1592
Connealy Combination 0188
REM Blackbird 6329
REM Blackbird 1346
Connealy Combination 0188
RM Baron 5811
G G Queen 9361
REM Bear Creek Judy 9396
C R A Bextor 872 5205 608
REM Bear Creek Judy 8354
FV Bear Creek Judy 3221

Marb	.63
RE	.44
RADG	.14
DMI	.23
\$EN	15
HP	13.3
\$M	104
\$B	93
\$C	225

CED	BW	Birth	Wean	Yrlg	CEM	Milk	WR	YR
9	86	-.1	47	70	8	31	102	96

Here is an XM 1592 by a good Baron daughter. The cow traits are marked and I am pretty sure I know who will find him

139 RM Against the Grain 4637

Birthdate: 06/19/24
Tattoo: 4637
Reg: 21265865

Mc Cumber Titanium 5005
Mc Cumber Influence 7121
B Pride 530 of Mc Cumber
FBA Against the Grain
Mc Cumber Mason 352
MA Missy 634
MA Eola 4050
Connealy Consensus
Connealy Combination 0188
Black Cayra of Conanga 8127
REM Lady 8344
REM Natural 1812
REM Lady 6318
REM Lady 0320

Marb	.50
RE	.65
RADG	.19
DMI	.62
\$EN	9
HP	11.9
\$M	64
\$B	116
\$C	214

CED	BW	Birth	Wean	Yrlg	CEM	Milk	WR	YR
7	88	-.4	40	75	5	28	95	96

Another outcross bull from a good, broody Combination daughter. Solid numbers across the board with side by side carcass EPDs.

140 RM Combination 7813 4626

Birthdate: 06/16/24
Tattoo: 4626
Reg: 21265859

Marb	.62
RE	.19
RADG	.25
DMI	-.22
\$EN	-7
HP	13.6
\$M	78
\$B	110
\$C	221

Connealy Consensus
Connealy Combination 0188
Black Cayra of Conanga 8127

RM Combination 7813

S A V Mustang 9134
REM Bell Sara 3306
FV Bell Sara T278
RM I Trend 7528

REM Natural 1812
Blevins Queen Solution 9629

REM Duchess 6342

RM I Trend 7528
REM Duchess 2331
Rem Duchess 2331

CED	BW	Birth	Wean	Yrlg	CEM	Milk	WR	YR
8	78	-1.6	44	81	13	31	85	88

Three generations on both sides for calving ease with classic XM numbers and his 10 year old dam is bred back and looks like she is 6.

143 RM Scottsman 4808

Birthdate: 06/02/24
Tattoo: 4808
Reg: 21265886

Marb	.83
RE	.37
RADG	.20
DMI	.82
\$EN	8
HP	12.8
\$M	76
\$B	122
\$C	234

Ashley Euler
Dunlouse Cortachy Boy D137
Champagne Cherry Bee B117

RM Scottsman 9625

RM Sequel 8535
REM Ruby 1341
Rem Ruby 1331
Connealy Impression

Byergo Big Easy 2601
Byergo Miss Elia 6153

SMB Erica 0874

Connealy Final Solution
Blevins Erica 3204
Blevins 112 Erica 1510

CED	BW	Birth	Wean	Yrlg	CEM	Milk	WR	YR
0	88	3.1	60	99	3	18	97	100

One of the highest WW EPDs in the sale and yet he is still under 100 for YW. That's real money with over and under performance traits like that. Good cow numbers, high marbling and he posts a 1.20 RMY

141 RM Reserve 0704 4211

Birthdate: 06/29/24
Tattoo: 4211
Reg: 21265957

Marb	.41
RE	.33
RADG	.17
DMI	.08
\$EN	17
HP	10.9
\$M	93
\$B	92
\$C	212

B/R New Day 454
V A R Reserve 1111
Sandpoint Blackbird 8809

RM Reserve 0704

G G Maverick 530
MJB Barbwire 1720
FV Barbwire R458
Redland Game Day 373
Redland Game Game 325
Redland Eppionia 306

XY Ella 9245

REM Precision 1547
RMA Ella 4210
REM Ella 1327

CED	BW	Birth	Wean	Yrlg	CEM	Milk	WR	YR
13	73	-2.7	38	67	13	28	92	86

This bull is pretty high up on our XM list and his dam would be fought over in a cow sale on her looks

144 RM Big Easy FJB 4549

Birthdate: 05/31/24
Tattoo: 4549
Reg: 21265933

Marb	.73
RE	.50
RADG	.16
DMI	.64
\$EN	13
HP	12.5
\$M	93
\$B	106
\$C	230

Connealy Impression
Byergo Big Easy 2601
Byergo Miss Elia 6153

RM Big Easy 0585 FJB

RM 2 Trend 3105
REM Everelda Entense 5361
REM Everelda Entense 8351
Cole Creek Black Seal 230

REM Miss Shoshone 1425

REM Quality Lady 2333
BAR Back to Future 8502 TP8
REM Miss Shoshone 3315
FV Miss Shoshone R401

CED	BW	Birth	Wean	Yrlg	CEM	Milk	WR	YR
10	79	-.3	42	71	13	33	95	100

Calving ease, top feed efficiency, good cow traits and high marbling

142 RM Combination 7813 4652

Birthdate: 06/23/24
Tattoo: 4652
Reg: 21265872

Marb	.24
RE	-.02
RADG	.16
DMI	.07
\$EN	13
HP	11.2
\$M	86
\$B	94
\$C	208

Connealy Consensus
Connealy Combination 0188
Black Cayra of Conanga 8127

RM Combination 7813

S A V Mustang 9134
REM Bell Sara 3306
FV Bell Sara T278
G G Maverick 530

REM Maverick 530 9568
G G Queen 9361

REM Chris 1422

RM 'S Answer 4528
REM Chris 7404
REM Chris 4306

CED	BW	Birth	Wean	Yrlg	CEM	Milk	WR	YR
3	83	1.5	50	77	7	32	92	89

Over and under performance traits, top DMI and positive cows traits here.

145 RM Big Easy FJB 4524

Birthdate: 05/22/24
Tattoo: 4524
Reg: 21265929

Marb	.81
RE	.27
RADG	.16
DMI	.37
\$EN	9
HP	14.7
\$M	95
\$B	95
\$C	218

Connealy Impression
Byergo Big Easy 2601
Byergo Miss Elia 6153

RM Big Easy 0585 FJB

RM 2 Trend 3105
REM Everelda Entense 5361
REM Everelda Entense 8351
Dunlouse Cortachy Boy

RM Cortachy Boy 9641
REM Winny 1338

REM Blackbird Direct 2492

Cole Creek Black Seal 230
SMB Blackbird Direct 5863
Blevins Blackbird Direct 7207

CED	BW	Birth	Wean	Yrlg	CEM	Milk	WR	YR
3	84	2.3	41	67	12	31	90	97

Cow traits, feed efficiency and high marbling in this FJB bull.

146 RM Scottsman 4532

Birthdate: 05/27/24
Tattoo: 4532
Reg: 21265814

Ashley Euler
Dunlouse Cortachy Boy D137
Champagne Cherry Bee B117

RM Scottsman 9625

REM Ruby 1341

Musgrave Aviator

REM Mariah 1371

REM Mariah 8460

RM Sequel 8535

Rem Ruby 1331
Koupals B&B Identity

MCATL Forever Lady 1429-138

RM 2 Trend 3105

REM Mariah 6451

Marb	.51
RE	.30
RADG	.17
DMI	.12
\$EN	18
HP	11.5
\$M	96
\$B	86
\$C	208

CED	BW	Birth	Wean	Yrlg	CEM	Milk	WR	YR
7	81	.2	44	71	12	29	101	98

This bull comes from perfect udders for several generations. That will count with the longevity you will get with his daughters.



REM Chris 6344 - Dam Lot 149

148 RM Big Easy 1518 4643

Birthdate: 06/21/24
Tattoo: 4643
Reg: 21265869

Byergo Big Easy 2601
Connealy Impression
Byergo Miss Elia 6153

RM Big Easy 1518

REM Lass 3339

RM 2 Trend 3105

REM Della 6440

MJB Della 2733

S A V Mustang 9134

REM Lass 7325
S A V Mustang 9134

REM Juice 1314

G G Maverick 530

MJB Della 6728

Marb	.56
RE	.54
RADG	.20
DMI	-.41
\$EN	15
HP	14
\$M	90
\$B	118
\$C	243

CED	BW	Birth	Wean	Yrlg	CEM	Milk	WR	YR
9	88	1	36	63	12	28	92	84

This bull will add marbling for you and frame. He traces back to JR Juice 3 times in his pedigree. His strong 10 year old cow is proof again that marbling and longevity work together. He also posts a 1.40 RMY

149 RM 2Trend 038 4627

Birthdate: 06/16/24
Tattoo: 4627
Reg: 21300777

RM 2 Trend 6592
RM 2 Trend 3105

Cactus 2 Trend 038

Sitz Pride 2126

REM Natural 1812

REM Chris 6344

REM Chris 2327

REM Dutchess 9319

Sitz Investment 660Z

Sitz Pride 797
RM I Trend 7528

Blevins Queen Solution 9629

RM Sequel 8535

Rtar Chris 5946

Marb	.57
RE	.18
RADG	.14
DMI	.72
\$EN	12
HP	11.5
\$M	83
\$B	78
\$C	184

CED	BW	Birth	Wean	Yrlg	CEM	Milk	WR	YR
10	77	-1.9	44	72	7	34	83	87

A calving ease 2 Trend with classic longevity EPDs provided by his 10 year old, gorgeous dam.

147 RM Commando 4534

Birthdate: 05/28/24
Tattoo: 4534
Reg: 21267413

G G Commando 720
EF Commando 1366

G G Commando 921

G G Betty Erica 7141

G A R Anticipation

REM Barbaramere 0339

REM Barbaramere 1342

G G Della 197

SydGen Forward 3773

G G Betty Erica 064
MCC Daybreak

G A R 5050 New Design 0530

RM Sequel 8535

REM Barbaramere 5305

Marb	.99
RE	.48
RADG	.22
DMI	1.44
\$EN	-15
HP	10
\$M	61
\$B	154
\$C	261

CED	BW	Birth	Wean	Yrlg	CEM	Milk	WR	YR
8	75	-.2	51	98	13	36	91	89

This bull just missed over and under bragging rights. He might still be within the margin of error for some data collectors. He didn't miss the mark to be a member of the "Saturated Fat Club."

150 RM Combination 8806 4911

Birthdate: 06/05/24
Tattoo: 4911
Reg: 21265901

Connealy Consensus
Connealy Combination 0188
Black Cayra of Conanga 8127

RM Combination 8806

Blevins Band Design 9817
Blevins Blackcap Beauty 2438

Blevins Blackcap Beauty
S A V Mustang 9134

RM 2 Trend 3105

RMV Blackbird 6004

REM Blackbird 5320

REM Juice 1314

Rem Big West 2336

Rem Blackbird 3305

Marb	.87
RE	.61
RADG	.20
DMI	-.03
\$EN	8
HP	8.8
\$M	68
\$B	145
\$C	256

CED	BW	Birth	Wean	Yrlg	CEM	Milk	WR	YR
14	80	-1.8	38	68	13	37	83	91

Another Combination X 2 Trend, by a another 10 year old cow, you can use on heifers that will add marbling; indexing 122 for IMF in this high marbling herd.

151 RM Hoover Dam 1601 4648

Birthdate: 06/22/24
Tattoo: 4648
Reg: 21265871

Marb	.96
RE	.59
RADG	.20
DMI	-.76
\$EN	8
HP	12.8
\$M	79
\$B	119
\$C	233

SydGen CC & 7
Hoover Dam
Erica of Ellston C124

RM Hoover Dam 1601

RM Sequel 8535
REM Winny 1338
RM Winny 8302
S A V Mustang 9134
RM 2 Trend 3105

REM Everelda Entense 5361

REM Juice 1314
G G Maverick 530
REM Everelda Entense
FV Everelda Entense P373

CED	BW	Birth	Wean	Yrlg	CEM	Milk	WR	YR
9	79	-1.5	35	59	12	36	88	86

Don't let this high marbling, calving ease Hoover Dam get away. His 10 year old dam is one of the highest marbling cows in this herd. He also ranks in the top 1% for DMI

154 RM Combination 7813 4814

Birthdate: 06/08/24
Tattoo: 4814
Reg: 21265887

Marb	.55
RE	.47
RADG	.21
DMI	-.37
\$EN	13
HP	13.4
\$M	88
\$B	94
\$C	210

Connealy Consensus
Connealy Combination 0188
Black Cayra of Conanga 8127

RM Combination 7813

S A V Mustang 9134
REM Bell Sara 3306
FV Bell Sara T278
RM I Trend 7528
REM Natural 1812

SMB Ideal Traveler 5865

Blevins Queen Solution 9629
B A R Ext Traveler 205
Blevins Ideal Traveler 7248
Blevins Ideal Ambush 6051

CED	BW	Birth	Wean	Yrlg	CEM	Milk	WR	YR
8	83	-1	34	62	8	32	88	93

An 11 year old cow represented here on this calving ease Combination bull, posting top 1% DMI, good cow traits and side by side carcass traits

152 RM Hoover Dam 1505 4590

Birthdate: 06/05/24
Tattoo: 4590
Reg: 21265847

Marb	1.02
RE	.20
RADG	.18
DMI	.08
\$EN	18
HP	10.5
\$M	83
\$B	127
\$C	248

SydGen CC & 7
Hoover Dam
Erica of Ellston C124

RM Hoover Dam 1505

RM Sequel 8535
REM Winny 1338
RM Winny 8302
B/R New Day 454
V A R Reserve 1111

REM Annie 9435

Sandpoint Blackbird 8809
REM Natural 1812
REM Annie 3312
REM Annie 0395

CED	BW	Birth	Wean	Yrlg	CEM	Milk	WR	YR
12	86	-1.1	38	67	10	24	86	94

One of the youngest bulls in the sale by a high volume good cow. His Scottsman brother will have several good bulls in the sale next year and this one is a member of the "Saturated Fat Club."

155 RM 2Trend 038 4207

Birthdate: 06/16/24
Tattoo: 4207
Reg: 21265903

Marb	.36
RE	.46
RADG	.17
DMI	.52
\$EN	11
HP	11.2
\$M	66
\$B	97
\$C	192

RM 2 Trend 3105
RM 2 Trend 6592
REM Dutchess 9319

Cactus 2 Trend 038

Sitz Investment 6602
Sitz Pride 2126
Sitz Pride 797
S A V Bismarck 5682
JVC Bismarck 5682 060

MJB Falcon Forever Lady 2732

21AR Blackbird Lady 8037
G A R Integrity
Falcon Forever Lady 3115
Boyd Forever Lady 7122

CED	BW	Birth	Wean	Yrlg	CEM	Milk	WR	YR
10	84	.2	45	77	11	18	88	88

This 2Trend bull's 14 year old dam continues to delight us with good calves every year and she just "works for food." She has had 12 calves with an avg IMF index of 107.

153 RM Big Easy FJB 4501

Birthdate: 05/12/24
Tattoo: 4501
Reg: 21265917

Marb	.83
RE	.17
RADG	.22
DMI	.35
\$EN	3
HP	14.5
\$M	102
\$B	117
\$C	254

Connealy Impression
Byergo Big Easy 2601
Byergo Miss Elia 6153

RM Big Easy 0585 FJB

RM 2 Trend 3105
REM Everelda Entense 5361
REM Everelda Entense 8351
Connealy Combination 0188
RM Combination 7519
REM Miss Baranda 4387

REM Queenie 2332

Connealy Combination 0188
REM Queenie 6429
REM Queenie 3335

CED	BW	Birth	Wean	Yrlg	CEM	Milk	WR	YR
10	75	-1.9	42	77	11	37	105	99

A high marbling, HP and low DMI, calving ease FJB bull.



156 J Rm Aviator 0535 4571

Birthdate: 06/02/24
Tattoo: 4571
Reg: 21265909

Marb	.58
RE	.48
RADG	.19
DMI	.30
\$EN	0
HP	9.8
\$M	75
\$B	132
\$C	246

Koupals B&B Identity
Musgrave Aviator
MCATL Forever Lady 1429-
RM Aviator 0535
Hunts Calculator 2720
FV Mariah R134
FV Mariah 3151
Koupals B&B Identity
Musgrave Aviator
MCATL Forever Lady 1429-
REM Winny 2312
RM Sequel 8535
REM Winny 1338
RM Winny 8302

CED	BW	Birth	Wean	Yrlg	CEM	Milk	WR	YR
4	78	.1	51	84	14	32	99	92

Moderate calving ease, over and under performance traits, side by side carcass traits top 15% for DMI

159 J RM 2Trend 038 4633

Birthdate: 06/19/24
Tattoo: 4633
Reg: 21265862

Marb	.82
RE	.21
RADG	.18
DMI	.99
\$EN	-16
HP	13.5
\$M	73
\$B	115
\$C	222

RM 2 Trend 3105
RM 2 Trend 6592
REM Dutchess 9319
Cactus 2 Trend 038
Sitz Pride 2126
Sitz Investment 6602
Sitz Pride 797
RM 2 Trend 3105
RM 2Trend 8631
REM Quality Lady 2333
REM Blackbird 1463
Connealy Combination 0188
REM Blackbird 8319
Blevins Blackbird 3238

CED	BW	Birth	Wean	Yrlg	CEM	Milk	WR	YR
-6	81	3.4	68	107	5	31	101	105

Good numbers all across the board here. This bull posts the highest WW EPD in the sale

157 J RM Hoover Dam 1505 4601

Birthdate: 06/08/24
Tattoo: 4601
Reg: 21265850

Marb	.64
RE	.73
RADG	.17
DMI	.88
\$EN	9
HP	11.3
\$M	81
\$B	133
\$C	254

SydGen C C & 7
Hoover Dam
Erica of Ellston C124
RM Hoover Dam 1505
RM Sequel 8535
REM Winny 1338
RM Winny 8302
RM Dunlop 9609
Dunlouse Cortachy Boy
REM Rita 2442
REM Barbaramere Jet 4346
REM Rita 5397
REM Natural 1812
JVC Rita 6132 880

CED	BW	Birth	Wean	Yrlg	CEM	Milk	WR	YR
2	84	2.3	53	87	5	32	98	99

Good Hoover Dam x Dunlop cross here with over and under performance EPDs, positive cow traits and side by side carcass traits.

160 J RM Hoover Dam 4901

Birthdate: 05/12/24
Tattoo: 4901
Reg: 21265897

Marb	.86
RE	1.08
RADG	.23
DMI	1.09
\$EN	-1
HP	12.2
\$M	73
\$B	148
\$C	265

SydGen C C & 7
Hoover Dam
Erica of Ellston C124
RM Hoover Dam 1592
Connealy Combination 0188
REM Blackbird 6329
REM Blackbird 1346
SydGen Multi Tool 2432
SydGen Resolve 7132
SydGen Dixie Erica 5104
RMVK Gammer 2089
Connealy Onward
RMV Gammer 8034
Three Trees Gammer 1322

CED	BW	Birth	Wean	Yrlg	CEM	Milk	WR	YR
21	65	-4.2	51	96	10	34	107	97

Holy moly, look at the calving ease here, performance and top of the sale carcass traits!

158 J RM McLendon 4541

Birthdate: 05/29/24
Tattoo: 4541
Reg: 21265819

Marb	.60
RE	.71
RADG	.21
DMI	0
\$EN	14
HP	16.1
\$M	77
\$B	115
\$C	226

Ashley Euler
Dunlouse Cortachy Boy D137
Champagne Cherry Bee B117
RM McLendon 9599
RM 2 Trend 3105
REM Everelda Entense 5361
REM Everelda Entense 8351
Koupals B&B Identity
Musgrave Aviator
MCATL Forever Lady 1429-138
REM Dixie 1447
RM Baron 5811
SMB Dixie 7858
SMB Dixie 5869

CED	BW	Birth	Wean	Yrlg	CEM	Milk	WR	YR
7	73	-1.2	44	75	11	19	93	100

Wow, such good numbers this far down in the sale order, calving ease, top 1% DMI, high HP, positive cow traits and side by side carcass traits



161 Rm Reserve 0704 4676

Birthdate: 07/14/24
Tattoo: 4676
Reg: 21300780

B/R New Day 454
V A R Reserve 1111 Sandpoint Blackbird 8809

RM Reserve 0704

G G Maverick 530
MJB Barbwire 1720 FV Barbwire R458
Connealy Combination 0188

RM Baron 5811
G G Queen 9361

REM Primrose 9430

REM's Answer 2701
REM Primrose 4343
REM Primrose 8353

Marb	.74
RE	.65
RADG	.16
DMI	.46
\$EN	6
HP	10.9
\$M	100
\$B	126
\$C	263

CED	BW	Birth	Wean	Yrlg	CEM	Milk	WR	YR
12	78	-1.7	55	85	11	33	100	100

A good young bull by one of the best Baron cows on the place and she packs performance into every calf. This bull has all the markings we have talked about throughout this book.

164 RM Hoover Dam 1505 4201

Birthdate: 05/31/24
Tattoo: 4201
Reg: 21322240

SydGen C C & 7
Hoover Dam Erica of Ellston C124

RM Hoover Dam 1505

RM Sequel 8535
REM Winny 1338
RM Winny 8302
Dunlouse Cortachy Boy

RM Dunlop 9609
REM Barabaramere Jet 4346

RMXY Primrose 2291

RM Baron 5811
RMXY Primrose 8221
JVC Primrose 5517

Marb	.76
RE	.25
RADG	.14
DMI	-.60
\$EN	24
HP	10
\$M	85
\$B	98
\$C	212

CED	BW	Birth	Wean	Yrlg	CEM	Milk	WR	YR
10	70	-.8	37	53	10	22	86	92

It doesn't get anymore Reminisce than this. Hoover Dam X Dunlop x Baron. 3 gorgeous cows in the pedigree, calving ease, low DMI, high cow traits and IMF

162 RM Big Easy 1518 4653

Birthdate: 06/23/24
Tattoo: 4653
Reg: 21265873

Connealy Impression
Byergo Big Easy 2601
Byergo Miss Elia 6153

RM Big Easy 1518

S A V Mustang 9134
REM Lass 3339
REM Lass 7325
S A V Final Answer 0035

REM's Answer 2701
Ox Bow Beebe Queen 0146

REM Primrose 4343

G G Maverick 530
REM Primrose 8353
FV Primrose 5314

Marb	.45
RE	.42
RADG	.16
DMI	.46
\$EN	12
HP	13.5
\$M	89
\$B	97
\$C	215

CED	BW	Birth	Wean	Yrlg	CEM	Milk	WR	YR
8	83	-.1	41	72	9	34	89	88

This bull's dam and maternal granddam love their job. His dam is 12 this year and his maternal grandam is 13, both are bred back, smoking cigars and loving their job!

165 RM Hoover Dam 1505 4556

Birthdate: 05/31/24
Tattoo: 4556
Reg: 21265952

SydGen C C & 7
Hoover Dam Erica of Ellston C124

RM Hoover Dam 1505

RM Sequel 8535
REM Winny 1338
RM Winny 8302
Cole Creek Black Cedar

Cole Creek Black Seal 230
Cole Creek Juanada G 53T

REM Lass 5402

Basin Franchise P142
A J R Lass 7224
Riverbend Lass 4261

Marb	.54
RE	.38
RADG	.24
DMI	.44
\$EN	14
HP	11.6
\$M	88
\$B	143
\$C	273

CED	BW	Birth	Wean	Yrlg	CEM	Milk	WR	YR
11	74	.3	46	87	12	30	93	98

A calving ease Hoover Dam by a perfect uddered 11 year old cow with classic Reminisce XM performance EPDs, low DMI and positive cow maker traits

163 RM Reserve 0581 4677

Birthdate: 07/15/24
Tattoo: 4677
Reg: 21300781

B/R New Day 454
V A R Reserve 1111 Sandpoint Blackbird 8809

RM Reserve 0581

G G Maverick 530
REM Quality Lady 1349
RM Quality Lady 8391
RM I Trend 7528

REM Normanday 2907
21AR Blackbird Lady 8037

REM Miss Baranda 8336

REM Natural 1812
REM Miss Baranda 3321
REM Miss Baranda 1371

Marb	.80
RE	.25
RADG	.19
DMI	.56
\$EN	-4
HP	11.6
\$M	60
\$B	102
\$C	192

CED	BW	Birth	Wean	Yrlg	CEM	Milk	WR	YR
12	83	-.3	47	81	11	25	112	108

An easy calving choice bull and we mean choice with his +.80 Marbling EPD.

166 RM Hoover Dam 1505 4806

Birthdate: 05/31/24
Tattoo: 4806
Reg: 21265884

SydGen C C & 7
Hoover Dam Erica of Ellston C124

RM Hoover Dam 1505

RM Sequel 8535
REM Winny 1338
RM Winny 8302
V A R Reserve 1111

RM Reserve 9811
Blevins Blackcap 3240

SMB Queen 2896

S A V Mustang 9134
SMB Queen 5861
G G Queen 9361

Marb	.21
RE	.13
RADG	.14
DMI	-.15
\$EN	13
HP	11.4
\$M	80
\$B	64
\$C	163

CED	BW	Birth	Wean	Yrlg	CEM	Milk	WR	YR
10	68	0	32	50	11	34	93	94

A good heifer bull by Hoover Dam out of a first calf heifer

167 RM Combination 8806 4573

Birthdate: 06/03/24
Tattoo: 4573
Reg: 21265841

Marb	.72
RE	.55
RADG	.21
DMI	.63
\$EN	-10
HP	13.4
\$M	49
\$B	140
\$C	231

Connealy Consensus
Connealy Combination 0188
Black Cayra of Conanga 8127

RM Combination 8806

Blevins Band Design 9817
Blevins Blackcap Beauty 2438
Blevins Blackcap Beauty
S A V Final Answer 0035

S A V Mustang 9134

REM Bell Sara 3322

S A V Emblynette 7415
RM I Trend 7528
REM Bell Sara 1359
FV Bell Sara P334

CED	BW	Birth	Wean	Yrlg	CEM	Milk	WR	YR
3	94	2.2	44	83	8	33	99	76

Another consistent calf by this 13 year old cow. Predictable, repeatable performance pays bills

169 RM Aviator 0535 4526

Birthdate: 05/24/24
Tattoo: 4526
Reg: 21265906

Marb	.63
RE	.77
RADG	.14
DMI	-.55
\$EN	22
HP	8.9
\$M	63
\$B	123
\$C	223

Koupals B&B Identity
Musgrave Aviator
MCATL Forever Lady 1429-138

RM Aviator 0535

Hunts Calculator 2720
FV Mariah R134

FV Mariah 3151
Dunlouse Cortachy Boy

REM Lass 2404

RM Dunlop 9609
REM Barbaramere Jet 4346
RM Sequel 8535
A J R Lass 7224

CED	BW	Birth	Wean	Yrlg	CEM	Milk	WR	YR
13	63	-1.3	32	46	16	25	103	97

168 RM 2Trend 038 4621

Birthdate: 06/15/24
Tattoo: 4621
Reg: 21265857

Marb	.79
RE	.29
RADG	.18
DMI	.22
\$EN	10
HP	8.1
\$M	86
\$B	112
\$C	231

RM 2 Trend 6592
RM 2 Trend 3105

Cactus 2 Trend 038

REM Dutchess 9319
Sitz Investment 660Z
Sitz Pride 2126

Sitz Pride 797
Connealy Combination 0188
RM Baron 5811

REM Forever Lady 1456

G G Queen 9361
Connealy Combination 0188
REM Forever Lady 8353
REM Forever Lady 5308

CED	BW	Birth	Wean	Yrlg	CEM	Milk	WR	YR
9	73	-2.2	46	73	9	33	98	97

170 RM Big Easy FJB 4811

Birthdate: 06/03/24
Tattoo: 4811
Reg: 21300783

Marb	.52
RE	.41
RADG	.17
DMI	-.04
\$EN	19
HP	11.3
\$M	81
\$B	102
\$C	213

Connealy Impression
Byergo Big Easy 2601
Byergo Miss Elia 6153

RM Big Easy 0585 FJB

RM 2 Trend 3105
REM Everelda Entense 5361
REM Everelda Entense 8351
Ashley Eular
Dunlouse Cortachy Boy

SMB Dixie 9858

Champagne Cherry Bee
RM Maverick 530 9912
SMB Dixie 5869
SMB Dixie 1318

CED	BW	Birth	Wean	Yrlg	CEM	Milk	WR	YR
-1	91	2.9	35	57	2	20	84	90

LOT 170A

60 Head
Commercial Yearling Heifers
100% Reminisce Angus Ranch Genetics
From the Woody Creek Ranch, St Xavier MT

LOT 170B

21 Head
Commercial Angus 3 Year Old Stock Cows
Reminisce Angus Ranch Genetics
AI'd to RM Dunlop 2638
Calving Start Dates - September 10th, 2027
From Maverick Cattle Company, Wisdom MT



Reminisce Angus Sires

Semen Available

Semen \$20 / Certificate \$40

All Progeny sired by
Reminisce Angus Ranch Sires
Eligible to enter into the
Reminisce Angus Ranch
Beef Program
Please see Bryan for details

RM Scottsman 9625

AAA 19793944

CED	BW	WW	YW	RADG	DMI	HP	CEM	Milk	\$EN	Marb	RE	\$M	\$W	\$F	\$G	\$B	\$C
-4	+1.6	+39	+64	+.15	+.30	+13.2	+0	+16	+24	+.89	+.34	+72	+26	+46	+61	+108	+212

RM McClendon 9599

AAA 19793942

CED	BW	WW	YW	RADG	DMI	HP	CEM	Milk	\$EN	Marb	RE	\$M	\$W	\$F	\$G	\$B	\$C
+11	-1.9	+25	+37	+.13	-.59	+13.4	+8	+13	+26	+.44	+.44	+54	+10	+18	+39	+58	+129

RM Dunlop 9609

AAA 19793855

CED	BW	WW	YW	RADG	DMI	HP	CEM	Milk	\$EN	Marb	RE	\$M	\$W	\$F	\$G	\$B	\$C
+5	+1.7	+38	+54	+.12	-.24	+10.3	+10	+13	+28	+.69	+.87	+72	+24	+41	+60	+102	+204

RM Hoover Dam 1592

AAA 20442168

CED	BW	WW	YW	RADG	DMI	HP	CEM	Milk	\$EN	Marb	RE	\$M	\$W	\$F	\$G	\$B	\$C
+10	-1.2	+50	+91	+.22	+1.00	+9.5	+7	+31	+4	+.73	+.77	+71	+58	+89	+56	+146	+260

RM Big Easy 0585 FJB

AAA 20147206

CED	BW	WW	YW	RADG	DMI	HP	CEM	Milk	\$EN	Marb	RE	\$M	\$W	\$F	\$G	\$B	\$C
+11	+0	+48	+90	+.24	+.58	+14.7	+15	+26	+1	+.83	+.51	+85	+45	+61	+59	+120	+241







THINK ABOUT SOMETHING DIFFERENT FOR YOUR CROP

At Montana Natural Soil Solutions, we provide solutions that deliver noticeable improvements in cow herds and measurable results in crop performance.



EnSoil Algae™ is one of those solutions.



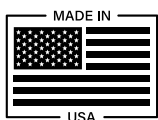
- ✓ Higher Feed Value
- ✓ Reduced Fertilizer Use



- ✓ Lower Mineral Intake
- ✓ Higher Conception Rates



SEE RESULTS HERE



CALL OR TEXT A MONTANA REP TO LEARN MORE

Bryan Mussard • 406-925-1416

Casey Fitzsimmons • 406-459-6891

Jase Klucwich • 406-552-7988

Tyler Street • 406-788-5876

Lunch Sponsors




WIPFLI LLP
CPAs and Consultants

Angler Village Inn
Espresso Bar * Café * Wine Lounge



Hillcrest Bank
A division of NBH Bank, Member FDIC




Pioneer Animal
Health
DVM Ben Abbey 

SAFeway 
Ingredients for life.™


Stockman Bank
Member FDIC




**MOUNTAINVIEW
INSURANCE**

Mountain View
Vet Service
DVM Doug Reedy 



Town & Country
FOODS

PRAIRIE NUTRITION CENTER INC.
Warren & Jodie Woroniecki
7075 28th St
Hebron, ND 58638
877-PNC-COWS (877-762-2697)
pncinc@westriv.com
www.PNCCOWS.com

Celebrating the 10th Annual

COLT CHALLENGE & SALE

March 27-28, 2026

Montana Center for Horsemanship, Dillon MT

FRIDAY

Colt Challenge: 9 AM

SATURDAY

Sale Preview: 9:30 AM

Lunch: 11:30 AM

Sale: 1PM



"COLTS PREPARED FOR THE REAL WORLD"



For more information, contact Eric Hoffmann by calling 406.925.1499 or visit <https://www.umwestern.edu/colt-challenge-sale/>





FIRST CLASS

US Postage
Paid
Ballyhoo Printing
59457

Bryan & Marcia Mussard

5101 Sweetwater Rd., Dillon, MT 59725

406-925-1416 • 406-686-6363

bwm6101@outlook.com • www.remangus.com

FIRST CLASS



Annual Production Sale
MARCH 6, 2026

1:00 PM, Big West Management Feeding Facility, Dillon, Montana

*Real
American Outcross
Bloodlines*