



137 Bulls Sell!

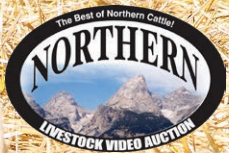
103 Yearling and
13 two-year-old
Angus Bulls
21 Optimizer Bulls

**39TH ANNUAL
PRODUCTION
SALE**

**Friday
February 27, 2026**

1:00 pm

At the Ranch • Hall, Montana



*Balancing traits for over four decades emphasizing
real-world cattle with these essential traits:
good feet & legs, udder quality, tight sheath and good disposition*



Friday February 27, 2026

1:00 pm • at the Ranch • Hall, MT

137 Bulls Sell!

**103 Yearling and
13 two-year-old
Angus Bulls
21 Optimizer Bulls**



**Bid through Northern
Livestock Video Auction's
NEW Online Bidding Platform!**



First Breeding Season Guarantee

Full coverage for 60 day breeding season.

- Broken penis (ruptured penis) in a single sire group.
- Structural problems due to feet and legs

50% Coverage of purchase price for 60 day breeding season

All bulls selling for \$4000 or more will be covered 50% by Skinner Ranch Seedstock if they are injured during their first breeding season. Breeding season is defined as the 60 day period following first turn out of the bulls. 50% of the value of the injured bull, minus 1/2 salvage value, will be given as a credit in the next year's sale, or toward a replacement bull if one is available, or cash back. Salvage value, if any, will be split equally between Skinner Ranch Seedstock and the buyer. All injured bulls must be diagnosed by a veterinarian. Please notify us as soon as possible should an injury occur and prior to the injured bull being sold for salvage.

- Broken penis (ruptured penis) injury in a multiple sire pasture
- Broken legs
- Stifle
- Disposition

All claims must be made by September 1, 2026. This does not include death as this can be insured for nor does it cover mismanagement or neglect. It does not cover injuries sustained prior to breeding season if your bull is turned out with other bulls.

Exceptions are foot rot, wire cuts, illness, and items out of Skinner Ranch Seedstock control.

Example 1: A \$7000 bull is injured, a credit of \$3500 minus 1/2 any salvage value will be given to the buyer.

Example 2: A \$4000 bull is injured, a credit of \$2000 minus 1/2 of any salvage value will be given to the buyer.

Example 3: A \$3000 bull is injured, no credit is given. Buyer retains all salvage value.

Desktop

1. It is best to use the Google Chrome web browser.
2. **Pre-Register at least one day prior to the sale.**
3. Go to bid.northernlivestockvideo.com and click "Get Approved to Bid".
4. Doing this will prompt you to create an account, after which you will fill out a bidder approval application.
5. Once Approved, an email will be sent to the email account provided, please click the link in that email to activate your account and a buyer number will be provided.
6. On sale day (after approval), visit www.northernlivestockvideo.com to view and bid!

Mobile

Use your mobile device to download the Northern Livestock Auction App and follow the above steps to get approved. *There is an instructional video on how to register to bid on our website* www.northernlivestockvideo.com

Phone Bidding

Anyone wanting to use the Northern Livestock phone bank to bid must pre-register and have a bid number to bid on the phone. **To register with NLVA call 866-616-5035 Before Sale Day.**

Northern's Sale Day Bid Line: **1-406-245-0889**

View the Online CATALOG and VIDEO CLIP of each BULL selling at www.northernlivestockvideo.com

Successful bidders making purchases will be contacted following the sale for payment and delivery arrangements.

**For technical assistance with
Internet Viewing and Bidding Questions,
call Sam Fraser 406-860-0590.**

Accommodations and Transportation:

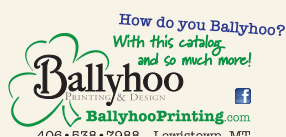
Missoula and Butte are served by major airlines.

Missoula: 60 miles west
Hilton Garden Inn 406-532-5300
Comfort Inn 406-542-0888

Butte: 60 miles east
Comfort Inn 406-494-8850
Days Inn 406-494-7000

Deer Lodge: 30 miles east
Super 8 406-846-2370

**Announcements
from the block will
take precedence
over the catalog.**





Friday February 27, 2026

Lunch at 12:00 Noon • Sale 1:00 pm
At the Ranch • Hall, Montana

www.SKINNERRANCH.com

Sale Day Phone
406-288-4001

406-288-3872

office/home phone

Tim406-581-6224

Kim406-581-1852

skinnerranch@hotmail.com

Auctioneer:

Joe Goggins 406-861-5664



Office phone and emergency phone
in case you need a phone number
to call us on sale day

406-288-3872

* Please call in advance to make
arrangements to call in during the sale

Livestock Press Representatives:

Kurt Kangas, American Angus Association - 406-366-4190

John Goggins, Western Ag Reporter - 406-373-5000

Jeff Thomas, Prairie Star, Ag Weekly - 406-581-8859

Sale Locations and Directions: Take Drummond Exit 154 off Interstate 90 then take Montana Highway 1 south 6.5 miles to Hall. Turn west in Hall and go 1.5 miles on paved road to ranch on the right side of road.

Bids: For buyers unable to attend the sale, a video of the bulls is available to view on Northern or Skinnerranch.com. To discuss the sale offering or bulls on video call us (preferably several days in advance) and describe your needs and budget and we would be happy to assist you in your selection. There will be a number of phones available sale day, please call in advance to make arrangements. Bids may also be sent or called in to Skinner Ranch personnel, auctioneer, or press representatives. Bids are handled with confidentiality and all sight unseen purchases are satisfaction guaranteed.

Northern: Sale will be available live on the internet at www.northernlivestockvideo.com but will **NOT** be broadcast on television. See inside front cover for further information.

QR code with each lot links to their video or view on Northern and SkinnerRanch.com

Retained Ownership: Skinner Ranch Seedstock is retaining 1/3 revenue sharing interest on all bulls, unless otherwise stated. Full possession and salvage value sell on all bulls.

Terms and Conditions: Cattle sell under terms and conditions of the American Angus Association and the American Sales Association.

Payment for Bulls: Full payment is due sale day unless prior arrangements have been made.

Fertility and Soundness: All bulls will be fertility and soundness examined by sale day. Scrotal circumferences will be available sale day.

Bull Development: The bulls were developed here at home on a high roughage ration to insure longevity and long term soundness.

Herd Health: The bulls are vaccinated with Pyramid 5, VibrioLepto plus Hardjo Bovis, Vision 8/Somnus, foot rot vaccine, and Nasalgen.

Johnes Tested: The entire mature SRS cow herd has been tested negative for Johnes Disease in 2020, 2021, 2022, 2023, 2024 and 2025. There were no positive cows in the herd and we will continue screening for Johnes.

Genetic Defects: All SRS cattle are either tested free of known genetic defects or have no pedigree risk.

Performance Data: All current performance data, including foot scores and current weights, will be available sale day.

Angus EPDs are current as of 1/23/26. Updated EPDs can be viewed at www.Angus.org.

Liability: People attending the sale do so at their own risk and responsibility without liability on the part of the ranch owner or employees.

Delivery: \$100 discount on all bulls picked up within 7 days of the sale in MT (Due to Health requirements on out of state bulls it will take longer to get them ready to travel). Bulls will start to be delivered after March 10th. Free delivery on bulls within 500 miles on purchases over \$4,000. The balance of the distance will be at cost.

Volume Discounts: A 5% discount will be given on purchases of five or more bulls.

Loyalty Discount: A 5% discount will be given to loyal customers that have purchased bulls in each of the last two sales (February 2024 and February 2025).

Ron & Bev Skinner
406-288-3872
skinnerranch@blackfoot.net

Tim & Hayley
406-581-6224
skinnerranch@gmail.com

Kim & Michelle
406-581-1852
skinnerranch@hotmail.com



162 Farm to Market West • Hall, MT 59837

Welcome to our annual production sale. We would like to express our sincere appreciation to all our past buyers and bidders. Your confidence has let us continue to move our program forward in our pursuit of developing cattle that are problem free and work well for our commercial customers.

It is important to us that we take time to thank all our neighbors, friends and family that help us throughout the year. There are also many other people that have been integral in moving our program forward including mentors, professors, colleagues and other professionals. At Skinner Ranch we ask a lot of questions to gain more knowledge in not only developing cattle, but in all the systems that get us to that end goal. We believe the growth and improvement of your entity ends when you stop learning. Be assured if we have asked you any questions you have helped us and we are grateful for that.

As many of you already know we have a certain type of cattle we like to raise. We focus heavily on breeding cattle that have a lot of look to them, not show ring type, but cattle that have tremendous eye appeal while still being extremely functional when placed in real cattle country. We develop these cattle as many commercial breeders do. Heifers are developed on long stem hay with zero concentrates, cows are not fed silage, bulls are not fed for maximum gain to give them a smoother appearance and more eye appeal. We develop our cattle in a sensible, sustainable fashion to filter out cattle that won't work in many demanding cattle operations while emphasizing the cattle that do. We do not breed for extreme numbers as we feel you always sacrifice traits in other areas.

As another year comes around our families are thankful for good health and the ability to live in a country that allows us the freedom to pursue and succeed in our passions. Our kids continue to be involved in many activities that allow them to experience and learn what might be their passion in life. We are so proud of our families.

Finally, we are excited about the current state of the cattle business. Prices this year have again been at an all-time high. We should certainly not be apologetic for this; it is long overdue for our sector of the beef industry. As you know the long hours, narrow margins, and mother nature can be difficult in the cattle business and our hope is that we will continue to see prices that reward your resilience. We see the future as extremely bright and wouldn't want to raise our family any other way.

Again, thank you for your interest in our program. We welcome the opportunity to visit with you about our program and our sale offering.

The Skinners



Kim, Ron and Tim



*The
Skinner Family*



REFERENCE SIRE

MYERS FAIR-N-SQUARE M39

tattoo: M39 birth: 1/07/19 reg 19418329

ANGUS BULL

Connealy Confidence Plus#
Woodhill Blueprint #
 Woodhill Evergreen Z291-B233

Connealy Thunder#
Myers Miss Beauty M136
 Myers Miss Beauty M476#

Connealy Confidence 0100#
 Elbanna of Conanga 1209
 Tehama Sierra Cut Z118
 Woodhill Evergreen U6-Z291
 Baldrige Kaboom K243 KCF#
 Parka of Conanga 241#
 Connealy Onward#
 Myers Miss Beauty M384#

\$M
+83
\$C
+300

Angus Association EPDs								
CED	BW	WW	YW	SC	HP	Milk	Marb	RE
+2	+2.2	+78	+135	+68	+13.9	+28	+88	+67



Myers Fair-N-Square M39

A balanced trait sire. He adds dimension and performance to his calves in an eye-appealing package. His sons are at the front end of the sale as they are stout, and thick with great depth. He sires beautiful broody daughters with great feet and excellent udders.

REFERENCE SIRE

SRS JACKSON 487J

tattoo: 487J birth: 1/14/21 reg 20132247

ANGUS BULL

Coleman Charlo 0256#
Coleman Bravo 6313
 Coleman Donna 714

Connealy Onward#
Pine Coulee Black Annie B87
 War Hill Blackbone Annie

O C C Paxton 730P#
 Bohi Abigale 6014
 Connealy Onward#
 Coleman Donna 386
 Connealy Lead On#
 Altune of Conanga 6104
 G A R Expectation 4915#
 V T 6807 Traveler S32

\$M
+111
\$C
+254

Angus Association EPDs								
CED	BW	WW	YW	SC	HP	Milk	Marb	RE
+9	+1.1	+61	+108	+1.35	+15.6	+33	+23	+50



SRS Jackson 487J

A long, deep-made heifer bull that we have used heavily on heifers. This bull is an easy decision to use due to his incredible look and performance. His dam is a full sister to U7 and continues an impressive family legacy. His calves continue to be well received and the bulls this year could be the best set to date.

REFERENCE SIRE

SRS LOGICAL 5273L

tattoo: 5273L birth: 2/5/23 reg +20736267

ANGUS BULL

Hoover No Doubt#
SRS Historic 2208H
 SRS Joyce 2208Z

Connealy Final Product#
SITZ Blackbird 334
 SITZ Blackbird 532#

Mogck Bullseye#
 Miss Blackcap Ellston J2
 Tombstone 050#
 Basin Joyce S474#
 Connealy Product 568#
 Ebonista of Conanga 47#
 Sitz Uncommon#
 Sitz Blackbird 6690

\$M
+83
\$C
+302

Angus Association EPDs								
CED	BW	WW	YW	SC	HP	Milk	Marb	RE
+10	-0.9	+50	+100	+90	+13.2	+25	+1.02	+75



SRS Logical 5273L

A light birth weight bull that has tremendous eye appeal. We utilized him heavily the last two years on heifers. The calves have come easy and grow well with lots of added look. We expect his first daughters to be tremendous cows as his dam and paternal grandam are cows that are hard to fault.

REFERENCE SIRE

SRS LONG RUN 7231L

tattoo: 7231L birth: 2/16/23 reg +20736273

ANGUS BULL

S A V Rainfall 6846#
Square B Atlantis 8060
 Elbanna of Conanga 1209

Tombstone 050#
SRS Joyce 2208Z
 Basin Joyce S474#

Coleman Charlo 0256#
 S A V Blackcap May 4136
 Connealy Consensus#
 Elbasta of Conanga 9703
 Sitz Upward 307R#
 Mytty Countess 906
 Brooks Ext 792#
 Basin Joyce 2264

\$M
+76
\$C
+258

Angus Association EPDs								
CED	BW	WW	YW	SC	HP	Milk	Marb	RE
-6	+3.7	+82	+134	+1.48	+10.0	+24	+64	+79



SRS Long Run 7231L

A top end bull that we sold two years ago that we simply had to integrate into our breeding program. This bull had a phenomenal look to him and excelled in many areas. His dam has a great Angus cow look with impeccable feet and a beautiful udder. His first calf crop are hard to miss in any pen. They had an average 205 day ratio of 103.

REFERENCE SIRE **SRS HONEST 3136H**
 tattoo: 3136H birth: 1/30/20 reg + 19884963

ANGUS BULL
 Soo Line Motive 9016# HF Kodiak 5R
SRS Blockbuster 2256B TLA Beauty 5R
 SRS Rose 2256Z Tombstone 050#
 S R S Rose 6148S#

Koupals B&B Identity# Sitz Upward 307R#
WK Blackbird 2224# B&B Erica 605#
 WK Blackbird 5066 Connealy Network
 TC Blackbird 0127

\$M
+109
\$C
+244

Angus Association EPDs								
CED	BW	WW	YW	SC	HP	Milk	Marb	RE
+7	+0.2	+61	+100	+46	+13.9	+17	+.28	+.50



SRS Honest 3136H

Honest sires progeny with the look! These cattle are level topped, heavy muscled, and big quartered while having awesome front ends. His daughters are simply gorgeous, moderate young cows with great rib shape and excellent udders. His progeny have great 205 day performance with 86 progeny rationing 101.

REFERENCE SIRE **BAR-E-L CHIEF 81K**
 tattoo: 81K birth: 2/10/22 reg 20668677

ANGUS BULL
 S A V Renovation 6822 S A V Renown 3439#
Brooking National 0144 S A V Madame Pride 0151
 Soo Line Rose 1019 Soo Line Motive 9016#
 E A Rose 918

Bar-E-L Natural Law 52Y S A V Bismarck 5682#
Bar-E-L Naomi 27C Bar-E-L Magnolia 143K
 Bar-E-L Naomi 83U S A V Net Worth 4200#
 Bar-E-L Naomi 11N

\$M
+69
\$C
+230

Angus Association EPDs								
CED	BW	WW	YW	SC	HP	Milk	Marb	RE
+1	+3.1	+42	+76	+98	+13.1	+28	+.34	+.84



Bar-E-L Chief 81K

A herd sire we acquired in 2023 that has an extreme amount of eye appeal an outcross pedigree and backed by phenomenal cows. His calves have exceptional vigor at birth. His progeny have tremendous presence and will certainly grab your attention. They are stylish, sound, and square-made. The first daughters are proving to be great mothers with good udders.

REFERENCE SIRE **SITZ DIGNITY 599J**
 tattoo: 599J birth: 1/30/21 reg 20003585

ANGUS BULL
 Sitz Stellar 726D# Mohnen Substantial 272#
Sitz Resilient 10208 SITZ Pride 200B
 Sitz Miss Burgess 1856 Sitz Top Game 561X#
 Sitz Miss Burgess 4381

Sitz Invasion 574D Connealy Conquest#
SITZ Barbaramere Nell 53F Sitz Supermania 173Z#
 SITZ Barbaramere Nell 105D Koupals B&B Titan 3013#
 Sitz Barbaramere Nell 874

\$M
+88
\$C
+277

Angus Association EPDs								
CED	BW	WW	YW	SC	HP	Milk	Marb	RE
+3	+1.7	+75	+125	+0.03	+15.4	+16	+.63	+1.25



SITZ Dignity 599J

A bull that we used for his moderate birth and tremendous muscle shape. We also liked his impressive foot structure and extremely low PAP score. The first set of calves are exhibiting the same great dimension and powerful hip.

REFERENCE SIRE **SQUARE B ATLANTIS 8060**
 tattoo: 8060 birth: 8/24/18 reg + 19405249

ANGUS BULL
 Coleman Charlo 0256# O C C Paxton 730P#
S A V Rainfall 6846# Bohi Abigale 6014
 S A V Blackcap May 4136 S A V 8180 Traveler 004#
 S A V May 2397#

Connealy Consensus# KMK Alliance 6595 187#
Elbanna of Conanga 1209 Blinda of Conanga 004
 Elbasta of Conanga 9703 Connealy Forward#
 Elba of Conanga 3761#

\$M
+79
\$C
+263

Angus Association EPDs								
CED	BW	WW	YW	SC	HP	Milk	Marb	RE
+1	+1.5	+62	+107	+1.26	+13.0	+29	+.70	+1.01



Square B Atlantis 8060

A sire we continue to incorporate into our program as his daughters are the right kind. They are long, big-ribbed females with phenomenal udders. We have also utilized sons back in our herd as well.

Scan the QR code to watch video of each lot!

1. Open the camera on your phone and hover over the QR code. **Do not take a picture.**
2. A yellow box with a link will pop up. Click on that link.
3. Video will start playing for that lot!

Weaning Rat	114
Sire Avg BW	121@82
Dam Avg BW	
Dam WNW	
Milk	
.3	+3
\$C	
	+287

VIDEO



ANGUSCS
Powered by Neogen GeneSeek

the sale with



SRS BULL LOTTERY

We will be offering a \$750 credit toward any bull purchased by customers who are in attendance at the sale.

Every bull bought by someone in attendance will be entered into the drawing.

If you buy three bulls you get three chances to win. Immediately following the sale we will draw a winner.

You must still be present to claim the \$750 credit.



ANGUS BULL

SRS Jackson 487J

S A V Downpour 8794
SRS Blanche 1127J

SRS JACKSON 1 127N

tattoo: 1127N birth: 01/17/25 reg: 21361020

Birth Weight	83
205 Weight	792
Weaning Rat	114
Sire Avg BW	121@82
Dam Avg BW	3@73
Dam WN Prod	3@106

Angus Association EPDs						
CED	BW	WW	YW	SC	HP	Milk
+10	+1.4	+75	+131	+1.09	+12.3	+35
FL	Marb	RE	Fat	\$M	\$C	
+1.05	+0.81	+0.72	+0.027	+68	+287	

VIDEO



REFERENCE SIRE

SRS Jackson 487J



REFERENCE DAM

SRS Blanche 1127J, Dam of Lot 1





2 **SRS FAIR-N-SQUARE 1204N**
 tattoo: 1204N birth: 01/09/25 reg: 21361365

ANGUS BULL
 Woodhill Blueprint#
Myers Fair-N-Square M39
 Myers Miss Beauty M136

MOGCK Entice#
SRS Chloe 1204j
 SRS Chloe 2205Z

Connealy Confidence Plus#
 Woodhill Evergreen Z291-B233
 Connealy Thunder#
 Myers Miss Beauty M476#

SydGen Enhance#
 MOGCK Erica 2255#
 TC Total 410#
 Basin Chloe 2P31#

Birth Weight	79
205 Weight	709
Weaning Rat	102
Sire Avg BW	42@87
Dam Avg BW	3@78
Dam WN Prod	3@106

Angus Association EPDs						
CED	BW	WW	YW	SC	HP	Milk
+4	+1.4	+70	+122	+.33	+12.2	+28
FL	Marb	RE	Fat	\$M	\$C	
+1.04	+1.03	+.89	+.021	+64	+288	



MATERNAL BROTHER

SRS Glacier 1204L, Maternal Brother to Lot 2

- Powerfully constructed from the ground up, huge top and quarter on this bull with high marbling EPD
- Dam is a long-sided, high production cow

Scan the QR code with your phone camera to go directly to that bull's video, or view on www.NorthernLivestockVideo.com and www.SkinnerRanch.com





LOT 3

B

3

SRS LONG RUN 9300N

tattoo: 9300N birth: 01/27/25 reg: 21361219

ANGUS BULL

Square B Atlantis 8060
SRS Long Run 7231L
 SRS Joyce 2208Z

S A V Rainfall 6846#
 Elbanna of Conanga 1209
 Tombstone 050#
 Basin Joyce S474#

Birth Weight	100
205 Weight	783
Weaning Rat	113
Sire Avg BW	21@89
Dam Avg BW	5@85
Dam WN Prod	5@102

SRS Blockbuster 2256B
SRS Rose 9300G
 S R S Rose 8128U

Soo Line Motive 9016#
 SRS Rose 2256Z
 Connealy Onward#
 Vermillion Rose 7566#

Angus Association EPDs						
CED	BW	WW	YW	SC	HP	Milk
-1	+3.6	+72	+122	+0.69	+14.2	+26
FL	Marb	RE	Fat	\$M	\$C	
+0.99	+0.44	+0.77	+0.014	+0.87	+256	



- A long-sided bull that is smooth-made with an explosive muscle shape
- Dam is an incredible cow with a gorgeous udder that always produces calves at the top of the crop



REFERENCE DAM

SRS Rose 9300G, Dam of Lot 3



MATERNAL BROTHER

SRS Headline 9300K, Maternal Brother to Lot 3

Dam of Lots 4, 5, 20, 23, 24, 50, and 73

**5220C
Progeny**



SRS-ROSE-5220C

birth: 02/8/15

reg: 18257236

WWR 8@104

A highly regarded cow embodying our vision of the ideal Angus cow. She possesses impressive length, thickness, and structural correctness complimented by a superb udder and cool front end. At 11 years of age her accolades continue to grow. She has produced three daughters which have sold in previous NILE sales including the 2023 pick of the heifer calves. She also had a heifer calf that sold for \$13,000 this fall. She has produced many top selling bulls including SRS Kickoff.



LOT **4**



LOTS 4-5 FLUSH BROTHERS

- Two full brothers that are phenomenal in their makeup
- They are long, thick and deep
- These are sons of arguably the best cow in our herd
- Dam is incredibly long, thick, and sound
- Her daughters are quickly becoming favorites with a full sister heifer calf selling for \$13,000 this past fall



SRS Rose 5102N, Full Sister to Lots 4 and 5



SRS LONG RUN 9239N

tattoo: 9239N birth: 01/30/25 reg: +21361255

ANGUS BULL

Square B Atlantis 8060
SRS Long Run 7231L
 SRS Joyce 2208Z

S A V Rainfall 6846#
 Elbanna of Conanga 1209
 Tombstone 050#
 Basin Joyce S474#

HF Kodiak 5R
 TLA Beauty 5R

Soo Line Motive 9016#

SRS Rose 5220C

S R S Rose 6148S#

S A V 004 Density 4336#
 Vermillion Rose 7566#

Birth Weight	96
205 Weight	810
Weaning Rat	ET
Sire Avg BW	21@89
Dam Avg BW	8@85
Dam WN Prod	8@104

Angus Association EPDs						
CED	BW	WW	YW	SC	HP	Milk
+3	+1.7	+63	+111	+1.72	+9.9	+24
FL	Marb	RE	Fat	\$M	\$C	
+1.04	+0.52	+0.78	+0.014	+80	+258	



SRS LONG RUN 9140N

tattoo: 9140N birth: 01/30/25 reg: +21361253

ANGUS BULL

Sire: **SRS Long Run 7231L**
 Dam: **SRS Rose 5220C**

Birth Weight	96
205 Weight	865
Weaning Rat	ET

Angus Association EPDs						
CED	BW	WW	YW	SC	HP	Milk
-5	+2.8	+69	+113	+1.51	+14.3	+31
FL	Marb	RE	Fat	\$M	\$C	
+1.14	+0.35	+0.57	+0.003	+94	+237	





SITZ BLACKBIRD-334

birth: 01/29/14

reg: 17761922

WWR 9@101

A donor cow we purchased with Parker Cattle. This cow is beautifully designed with an excellent udder. Her progeny have her same look and "presence". We love the daughters out of this cow and the bulls have been front-end kind as well. She has produced great herd sires like SRS Logical and Sitz Profile.

SRS Donor Dam

Dam of Lots 6, 14, and 39

**334
Progeny**





6 **SRS DOWNPOUR 0127N**
 tattoo: 0127N birth: 02/02/25 reg: +21361222

ANGUS BULL
 S A V Rainfall 6846# Coleman Charlo 0256#
S A V Downpour 8794 S A V Blackcap May 4136
 S A V Madame Pride 4407# S A V Resource 1441#
 S A V Madame Pride 0235

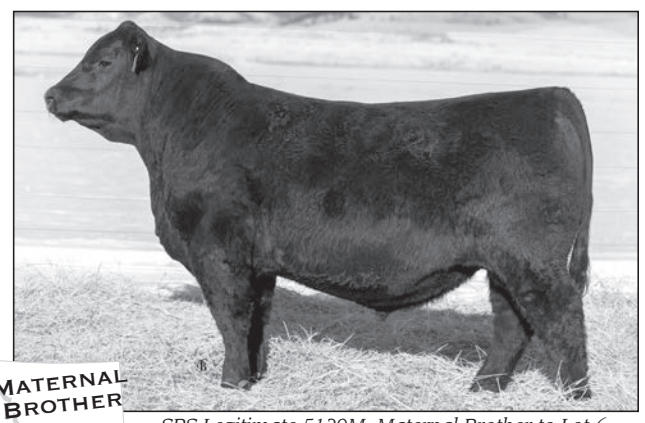
Connealy Final Product# Connealy Product 568
SITZ Blackbird 334 Ebonista of Conanga 471#
 SITZ Blackbird 532# Sitz Uncommon#
 Sitz Blackbird 6690

Birth Weight	96
205 Weight	864
Weaning Rat	ET
Sire Avg BW	27@89
Dam Avg BW	9@81
Dam WN Prod	9@101

Angus Association EPDs						
CED	BW	WW	YW	SC	HP	Milk
-4	+5.1	+89	+154	+1.74	+12.3	+27
FL	Marb	RE	Fat	\$M	\$C	
+1.07	+0.61	+0.89	+0.024	+66	+257	



- As long of a bull as you will find in the offering
- This bull has tremendous thickness and growth
- Dam is absolutely beautiful in her design with a perfect udder at 12 years of age



SRS Legitimate 5129M, Maternal Brother to Lot 6





SRS DIGNITY 1172N

tattoo: 1172N birth: 01/27/25 reg: 21362320

ANGUS BULL

Sitz Resilient 10208

SITZ Dignity 599J

SITZ Barbaramere Nell 53F#

Sitz Stellar 726D#

Sitz Miss Burgess 1856

Sitz Invasion 574D

SITZ Barbaramere Nell 105D

Square B Atlantis 8060

SRS Pride 1172J

SRS Pride 2244Z

S A V Rainfall 6846#

Elbanna of Conanga 1209

Tombstone 050#

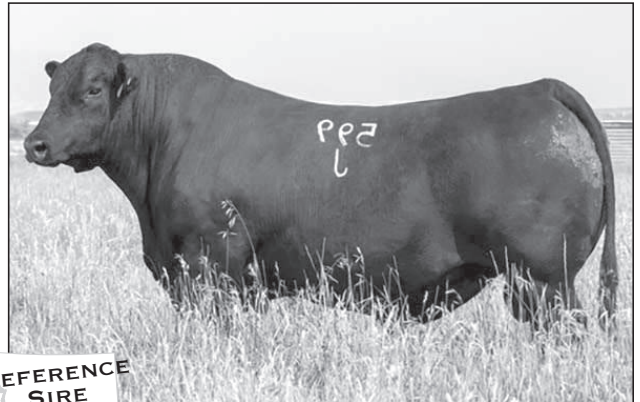
Basin Pride 953R#

Birth Weight	85
205 Weight	748
Weaning Rat	108
Sire Avg BW	7@85
Dam Avg BW	3@78
Dam WN Prod	3@105

Angus Association EPDs						
CED	BW	WW	YW	SC	HP	Milk
+0	+2.0	+66	+110	+1.45	+10.9	+31
FL	Marb	RE	Fat	\$M	\$C	
+1.07	+.33	+.77	+.021	+84		+240



- A bull that is huge-hipped, deep-quartered and square
- A bull that is extremely balanced and hard to fault in his design
- Dam is as close to an ideal Angus cow in her type and kind with an exceptional udder



Sitz Dignity 599J





8 **SRS HONEST 3126N**
 tattoo: 3126N birth: 01/12/25 reg: 21361110
ANGUS BULL
 SRS Blockbuster 2256B
SRS Honest 3136H
 WK Blackbird 2224#
 Sitz Resilient 10208
SRS Primrose 3126
 Pine Coulee Primrose A26

Soo Line Motive 9016#
 SRS Rose 2256Z
 Koupals B&B Identity#
 WK Blackbird 5066
 Sitz Stellar 726D#
 Sitz Miss Burgess 1856
 Connealy Impression#
 W C C Primrose S414

Birth Weight	72
205 Weight	777
Weaning Rat	111
Sire Avg BW	122@80
Dam Avg BW	1@72
Dam WN Prod	1@111

Angus Association EPDs						
CED	BW	WW	YW	SC	HP	Milk
+6	+0.3	+82	+132	+77	+14.2	+18
FL	Marb	RE	Fat	\$M	\$C	
+1.25	+0.40	+0.61	+0.009	+109	+269	

ANGUSGS
 Powered by Neogen Genoscreen
 VIDEO

Heifer Bull Potential

- A bull that you will appreciate when put into motion as he is beautifully balanced, clean made and stout
- Dam is a great young cow with tremendous promise



SRS Honest 3136H





10 SRS FAIR-N-SQUARE 1202N
 tattoo: 1202N birth: 01/22/25 reg: 21361454

ANGUS BULL
 Woodhill Blueprint#
Myers Fair-N-Square M39
 Myers Miss Beauty M136

Connealy Confidence Plus#
 Woodhill Evergreen Z291-B233
 Connealy Thunder#
 Myers Miss Beauty M476#

Musgrave 316 Stunner#
SRS Evergreen 1202J
 SRS Evergreen 3236a#

LD Capitalist 316#
 MCATL Blackbird 831-1378#
 S R S Yukon 9133Y
 S R S Evergreen 0107X

Birth Weight	71
205 Weight	750
Weaning Rat	108
Sire Avg BW	42@87
Dam Avg BW	3@70
Dam WN Prod	3@95

Angus Association EPDs						
CED	BW	WW	YW	SC	HP	Milk
+4	-0.7	+78	+131	+19	+12.9	+31
FL	Marb	RE	Fat	\$M	\$C	
+1.08	+0.46	+0.35	+0.078	+108	+264	



- A smooth-designed, stout-featured bull
- A bull that has incredible muscle and shape to him
- Dam is long-made with a great udder

9 SRS FAIR-N-SQUARE 0228N
 tattoo: 0228N birth: 01/18/25 reg: 21361483

ANGUS BULL
 Woodhill Blueprint#
Myers Fair-N-Square M39
 Myers Miss Beauty M136

Connealy Confidence Plus#
 Woodhill Evergreen Z291-B233
 Connealy Thunder#
 Myers Miss Beauty M476#

SRS Blockbuster 2256B
SRS Pride 0228H
 SRS Pride 2214Z

Soo Line Motive 9016#
 SRS Rose 2256Z
 Sitz Uncommon#
 Vermilion K Pride 8300

Birth Weight	96
205 Weight	713
Weaning Rat	103
Sire Avg BW	42@87
Dam Avg BW	4@88
Dam WN Prod	4@102

Angus Association EPDs						
CED	BW	WW	YW	SC	HP	Milk
-2	+3.8	+77	+137	+0.37	+12.1	+21
FL	Marb	RE	Fat	\$M	\$C	
+1.16	+0.61	+0.66	+0.025	+76	+281	



- Another bull we appreciate for his level-design and big top
- His dam has put another great bull at the front end of the sale

11 SRS FAIR-N-SQUARE 1149N
 tattoo: 1149N birth: 01/10/25 reg: 21361498

ANGUS BULL
 Woodhill Blueprint#
Myers Fair-N-Square M39
 Myers Miss Beauty M136

Connealy Confidence Plus#
 Woodhill Evergreen Z291-B233
 Connealy Thunder#
 Myers Miss Beauty M476#

S A V Renown 3439#
SRS Rose 1149J
 S R S Rose 0119X

Rito 707 of Ideal 3407 7075
 S A V Blackcap May 4136
 S R S Trademark 732T
 S R S Rose 6146S

Birth Weight	83
205 Weight	698
Weaning Rat	101
Sire Avg BW	42@87
Dam Avg BW	3@86
Dam WN Prod	3@99

Angus Association EPDs						
CED	BW	WW	YW	SC	HP	Milk
+8	+0.1	+60	+123	+0.08	+10.5	+37
FL	Marb	RE	Fat	\$M	\$C	
+1.10	+0.55	+0.56	+0.077	+71	+247	



Heifer Bull Potential

- A balanced bull that is incredibly three-dimensional in his makeup
- Lots of thickness and depth here
- Dam is a good young Renown daughter that is feminine with a great udder



Myers Fair-N-Square M39

12 SRS FAIR-N-SQUARE 6206N
 tattoo: 6206N birth: 01/25/25 reg: 21361498

ANGUS BULL
 Woodhill Blueprint#
Myers Fair-N-Square M39
 Myers Miss Beauty M136

Connealy Confidence Plus#
 Woodhill Evergreen Z291-B233
 Connealy Thunder#
 Myers Miss Beauty M476#

Tombstone 050#
SRS Kathy 6206D
 S R S Kathy 0394N#

Sitz Upward 307R#
 Mytty Countess 906
 B C C Bushwacker 41-93#
 Tar Kathy 8003

Birth Weight	92
205 Weight	831
Weaning Rat	120
Sire Avg BW	42@87
Dam Avg BW	8@85
Dam WN Prod	7@104

Angus Association EPDs						
CED	BW	WW	YW	SC	HP	Milk
+4	+1.6	+76	+131	+0.52	+15.1	+40
FL	Marb	RE	Fat	\$M	\$C	
+1.06	+0.77	+0.70	+0.047	+93	+291	



- Huge performance with incredible muscle mass in a level-made package
- Dam is a 10 year old cow that has stood the test of time



SRS Historic 0228M, Maternal Brother to Lot 9



13 **SRS LOGICAL 0227N**
 tattoo: 0227N birth: 01/27/25 reg: 21360923
ANGUS BULL
 SRS Historic 2208H Hoover No Doubt#
SRS Logical 5273L SRS Joyce 2208Z
 SITZ Blackbird 334 Connealy Final Product#
 SITZ Blackbird 532#
 SRS Blockbuster 2256B Soo Line Motive 9016#
SRS Emma 0227H# SRS Rose 2256Z
 WK Emma 1322 Pine Ridge Hammer S322#
 Cherry Crk Emma 228 7108

Birth Weight	83
205 Weight	758
Weaning Rat	110
Sire Avg BW	43@74
Dam Avg BW	4@84
Dam WN Prod	4@109

15 **SRS JACKSON 6264N**
 tattoo: 6264N birth: 01/25/25 reg: 21361170
ANGUS BULL
 Coleman Bravo 6313# Coleman Charlo 0256#
SRS Jackson 487J Coleman Donna 714
 Pine Coulee Black Annie B87 Connealy Onward#
 War Hill Backbone Annie
 HF Bank Roll 84B HF Smokin' Aces 105Y
SRS Elba 6264D HF Miss Lucy 268Z
 SRS Elba 4233B SRS Zamboni 546Z
 SRS Elba 1217 Y

Birth Weight	96
205 Weight	812
Weaning Rat	117
Sire Avg BW	121@82
Dam Avg BW	7@83
Dam WN Prod	8@101

Angus Association EPDs						
CED	BW	WW	YW	SC	HP	Milk
+3	+3.6	+74	+131	+1.16	+10.6	+20
FL	Marb	RE	Fat	\$M	\$C	
+1.20	+0.83	+0.32	+0.066	+62	+257	

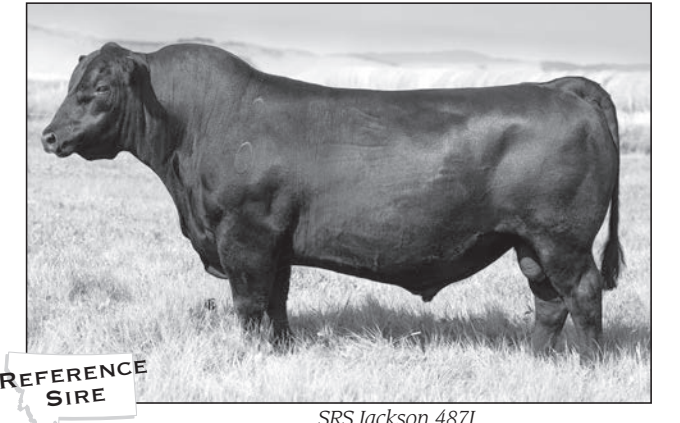
ANGUSGS
Powered by Neogen GenesSeek
VIDEO

Angus Association EPDs						
CED	BW	WW	YW	SC	HP	Milk
+1	+3.6	+87	+143	+0.85	+12.6	+23
FL	Marb	RE	Fat	\$M	\$C	
+1.16	+0.26	+0.60	-0.005	+81	+270	

ANGUSGS
Powered by Neogen GenesSeek
VIDEO

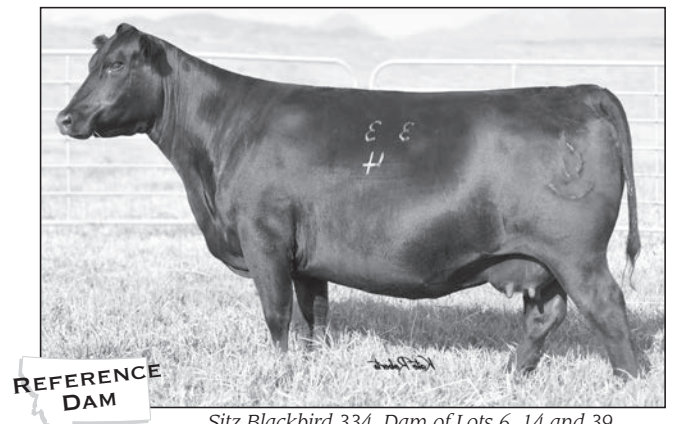
- A big performance bull that has lots of power
- Dam is a fancy-made Blockbuster daughter

- An extremely long-spined bull that has a lot of performance and presence
- Dam is a 10 year old cow with eye appeal and a gorgeous udder



14 **SRS DIGNITY 907N**
 tattoo: 907N birth: 01/26/25 reg: +21362656
ANGUS BULL
 Sitz Resilient 10208 Sitz Stellar 726D#
SITZ Dignity 599J Sitz Miss Burgess 1856
 SITZ Barbaramere Nell 53F# Sitz Invasion 574D
 SITZ Barbaramere Nell 105D
 Connealy Final Product# Connealy Product 568
SITZ Blackbird 334 Ebonista of Conanga 471#
 SITZ Blackbird 532# Sitz Uncommon#
 Sitz Blackbird 6690

Birth Weight	80
205 Weight	789
Weaning Rat	ET
Sire Avg BW	7@85
Dam Avg BW	9@81
Dam WN Prod	9@101



Angus Association EPDs						
CED	BW	WW	YW	SC	HP	Milk
+4	+0.0	+67	+115	+0.38	+15.1	+32
FL	Marb	RE	Fat	\$M	\$C	
+1.21	+0.50	+0.66	+0.040	+96	+248	

ANGUSGS
Powered by Neogen GenesSeek
VIDEO

- A long, deep-made bull
- Dam is absolutely beautiful in her design with a perfect udder at 12 years of age

Sitz Blackbird 334, Dam of Lots 6, 14 and 39

LOTS 16-17 FLUSH BROTHERS

- Two full brothers that have a lot of performance and eye appeal
- Dam is a 12 year old cow that is excellent in her makeup with great production and a beautiful udder



17 **SRS JACKSON 6155N**
 tattoo: 6155N birth: 02/03/25 reg: +21361475
ANGUS BULL

Birth Weight	86
205 Weight	802
Weaning Rat	ET

Sire: **SRS Jackson 487J**
 Dam: **KR Ms Big Black 4457#**

Angus Association EPDs						
CED	BW	WW	YW	SC	HP	Milk
+7	+0.9	+62	+106	+1.24	+11.8	+34
FL	Marb	RE	Fat	\$M	\$C	
+1.08	+0.39	+0.38	+0.036	+97	+228	

ANGUSGS
 Powered by Neogen Genescope
 VIDEO

Heifer Bull Potential



SRS No Doubt 4457H
 Maternal Brother to Lot 16 and 17

16 **SRS JACKSON 906N**
 tattoo: 906N birth: 01/29/25 reg: +21361478
ANGUS BULL

Birth Weight	86
205 Weight	768
Weaning Rat	ET
Sire Avg BW	121@82
Dam Avg BW	9@88
Dam WN Prod	9@107

Coleman Bravo 6313# Coleman Charlo 0256#
 SRS Jackson 487J Coleman Donna 714
 Pine Coulee Black Annie B87 Connealy Onward#
 War Hill Blackbone Annie
 HF Troubadour 228Z HF Tiger 5T#
KR Ms Big Black 4457# HF Barbara McHenry 126R
 WK Ms Big Black 1503 WK Power Up 9412
 WK Ms Big Black 9134

Angus Association EPDs						
CED	BW	WW	YW	SC	HP	Milk
+9	+0.8	+59	+100	+0.96	+15.3	+34
FL	Marb	RE	Fat	\$M	\$C	
+1.07	+0.12	+0.40	+0.053	+107	+224	

ANGUSGS
 Powered by Neogen Genescope
 VIDEO

Heifer Bull Potential



18**SRS JACKSON 5128N**

tattoo: 5128N birth: 02/02/25 reg: +21361468

ANGUS BULL

Coleman Bravo 6313# Coleman Charlo 0256#
SRS Jackson 487J Coleman Donna 714
 Pine Coulee Black Annie B87 Connealy Onward#
 War Hill Backbone Annie
 Coleman Juneau 044# O C C Juneau 807J#
Coleman Donna 6317# Coleman Donna 714
 Coleman Donna 801 N Bar Emulation EXT#
 KMK Donna J311

Birth Weight	95
205 Weight	829
Weaning Rat	ET
Sire Avg BW	121@82
Dam Avg BW	7@74
Dam WN Prod	7@105

Angus Association EPDs						
CED	BW	WW	YW	SC	HP	Milk
+4	+2.2	+58	+106	+68	+16.1	+34
FL	Marb	RE	Fat	\$M	\$C	
+1.08	+1.14	+5.4	+0.053	+103	+250	



- A heavy weaning bull with great length
- Dam is an extremely fancy cow that we selected out of Coleman's Fall dispersal sale
- Her offspring are proving to be the right type and kind

**Angus Yearling Bulls****19****SRS ATLANTIS 8209N**

tattoo: 8209N birth: 01/19/25 reg: 21361346

ANGUS BULL

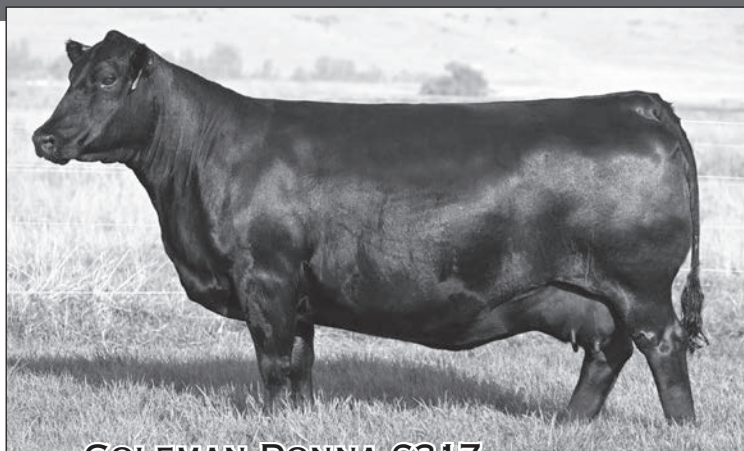
S A V Rainfall 6846# Coleman Charlo 0256#
Square B Atlantis 8060 S A V Blackcap May 4136
 Elbanna of Conanga 1209 Connealy Consensus#
 Elbasta of Conanga 9703
 SRS Blockbuster 2256B Soo Line Motive 9016#
SRS Manor 8209F SRS Rose 2256Z
 Ox Bow Manor 443# N Bar Emulation EXT#
 Ox Bow Manor 037

Birth Weight	85
205 Weight	772
Weaning Rat	112
Sire Avg BW	71@86
Dam Avg BW	6@87
Dam WN Prod	6@103

Angus Association EPDs						
CED	BW	WW	YW	SC	HP	Milk
+1	+1.8	+74	+132	+34	+11.2	+30
FL	Marb	RE	Fat	\$M	\$C	
+1.06	+1.10	+8.0	+0.034	+77	+253	



- A long-made bull with great performance with a maternally stacked pedigree

SRS Donor Dam**COLEMAN-DONNA-6317**

birth: 7/12/16

reg: +18734954#

WWR 7@105

A donor cow we purchased as a sale highlight in Coleman's 2023 Fall Herd Dispersion. She was considered by many to be the most phenotypically attractive cow to sell. She posts a BWR of 7@90, WWR of 7@105, and YWR of 6@104. Her legacy should include productive daughters with a broody timeless Angus look as well as progeny that excel at 205 days.

Dam of Lots 18, 29, and 96

6317 Progeny

20

SRS ATLANTIS 107N

tattoo: 107N birth: 02/14/25 reg: +21353171

ANGUS BULL

S A V Rainfall 6846# Coleman Charlo 0256#
 S A V Blackcap May 4136
Square B Atlantis 8060
 Elbanna of Conanga 1209 Connealy Consensus#
 Elbasta of Conanga 9703
 Soo Line Motive 9016# HF Kodiak 5R
 TLA Beauty 5R
SRS Rose 5220C
 S R S Rose 6148S# S A V 004 Density 4336#
 Vermilion Rose 7566#

Birth Weight	93
205 Weight	746
Weaning Rat	ET
Sire Avg BW	71@86
Dam Avg BW	8@85
Dam WN Prod	8@104

Angus Association EPDs						
CED	BW	WW	YW	SC	HP	Milk
-5	+2.5	+65	+111	+59	+12.5	+26
FL	Marb	RE	Fat	\$M	\$C	
+1.00	+0.29	+0.98	-0.046	+80	+249	



- A bull that has incredible thickness with a great look
- A full brother to SRS Kickoff
- Dam is arguably the best cow in our herd
- Dam is incredibly long, thick, and sound
- Her daughters are quickly becoming favorites with a heifer calf selling for \$13,000 this past fall



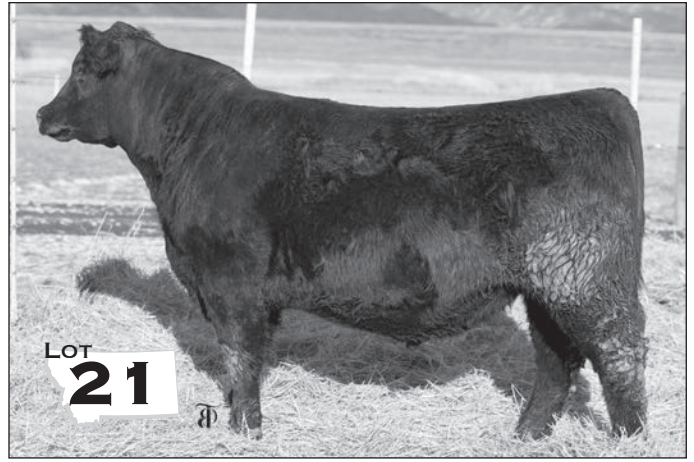
REFERENCE DAM

SRS Rose 5220C, Dam of Lots 4, 5, 20, 23, 24, 50, 73



FULL BROTHER

SRS Kickoff 5220K, Full Brother to Lot 20



LOT 21

21

SRS GLACIER 3182N

tattoo: 3182N birth: 01/16/25 reg: 21361121

ANGUS BULL

LD Capitalist 316# Connealy Capitalist 028#
 LD Dixie Erica 2053
SRS Glacier 2256G
 SRS Rose 2256Z
 Tombstone 050#
 S R S Rose 6148S#
 SRS Jackson 487J
 Coleman Bravo 6313#
SRS Rose 3182
 Pine Coulee Black Annie B87
 SRS Rose 7261E
 Vision Unanimous 1418#
 SRS Rose 4216B

Birth Weight	81
205 Weight	876
Weaning Rat	125
Sire Avg BW	94@75
Dam Avg BW	1@81
Dam WN Prod	1@125

Angus Association EPDs						
CED	BW	WW	YW	SC	HP	Milk
+2	+3.3	+95	+157	+46	+11.3	+27
FL	Marb	RE	Fat	\$M	\$C	
+1.09	+0.28	+0.74	+0.053	+68	+269	



- Another extremely long-made bull with incredible performance
- Heaviest 205 day weight in the sale
- Dam is a beautiful young cow

22

SRS LONGRUN 0226N

tattoo: 0226N birth: 01/20/25 reg: 21360918

ANGUS BULL

Square B Atlantis 8060 S A V Rainfall 6846#
 Elbanna of Conanga 1209
SRS Long Run 7231L
 SRS Joyce 2208Z Tombstone 050#
 Basin Joyce S474#
 SRS Blockbuster 2256B Soo Line Motive 9016#
 SRS Rose 2256Z
SRS Emma 0226H
 WK Emma 1322 Pine Ridge Hammer S322#
 Cherry Crk Emma 228 7108

Birth Weight	87
205 Weight	679
Weaning Rat	98
Sire Avg BW	21@89
Dam Avg BW	4@80
Dam WN Prod	4@99

Angus Association EPDs						
CED	BW	WW	YW	SC	HP	Milk
+5	+2.4	+83	+146	+94	+15.7	+26
FL	Marb	RE	Fat	\$M	\$C	
+1.10	+0.99	+0.41	+0.096	+104	+302	



- A clean-made bull with great shape



REFERENCE SIRE

SRS Long Run 7231L

LOTS 23-24 FLUSH BROTHERS

- Two more full brothers to Lot 4 & 5
- They have the same power and look as their full brothers
- These are sons of arguably the best cow in our herd
- Dam is incredibly long, thick, and sound
- Her daughters are quickly becoming favorites with a full sister heifer calf selling for \$13,000 this past fall


23 **SRS LONG RUN 5419N**
tattoo: 5419N birth: 01/29/25 reg: +21361238

ANGUS BULL
Square B Atlantis 8060
SRS Long Run 7231L
SRS Joyce 2208Z

S A V Rainfall 6846#
Elbanna of Conanga 1209
Tombstone 050#
Basin Joyce S474#
HF Kodiak 5R
TLA Beauty 5R
S A V 004 Density 4336#
Vermilion Rose 7566#

Birth Weight	96
205 Weight	723
Weaning Rat	ET
Sire Avg BW	21@89
Dam Avg BW	8@85
Dam WN Prod	8@104

Angus Association EPDs						
CED	BW	WW	YW	SC	HP	Milk
+0	+2.5	+67	+116	+85	+12.1	+26
FL	Marb	RE	Fat	\$M	\$C	
+1.03	+65	+46	+040	+75	+240	


ANGUSGS
Powered by Neogen Genescope
VIDEO 

24 **SRS LONG RUN 8108N**
tattoo: 8108N birth: 01/31/25 reg: +21361251

ANGUS BULL
Sire: **SRS Long Run 7231L**
Dam: **SRS Rose 5220C**

Birth Weight	96
205 Weight	828
Weaning Rat	ET

Angus Association EPDs						
CED	BW	WW	YW	SC	HP	Milk
-11	+4.6	+80	+134	+1.61	+10.8	+24
FL	Marb	RE	Fat	\$M	\$C	
+99	+37	+1.06	-.041	+46	+230	

ANGUSGS
Powered by Neogen Genescope
VIDEO 



REFERENCE
DAM

SRS Rose 5220C, Dam of Lots 4, 5, 20, 23, 24, 50, 73



FULL
BROTHER

SRS Long Run 9239N
Lot 4 in this sale and Full Brother to Lots 23 and 24





REFERENCE
SIRE

SRS Honest 3136H

26

SRS HONEST 3197N

tattoo: 3197N	birth: 01/12/25	reg: 21361130
ANGUS BULL	Soo Line Motive 9016#	Birth Weight 74
SRS Blockbuster 2256B	SRS Rose 2256Z	205 Weight 772
SRS Honest 3136H	Koupals B&B Identity#	Weaning Rat 110
WK Blackbird 2224#	WK Blackbird 5066	Sire Avg BW 122@80
SRS Historic 2208H	Hoover No Doubt#	Dam Avg BW 1@74
SRS Blackbird 3197	SRS Joyce 2208Z	Dam WN Prod 1@110
SRS Blackbird 9232G	Mill Bar Hickok 7242#	
	S R S Blackbird 1254Y	

Angus Association EPDs						
CED	BW	WW	YW	SC	HP	Milk
+2	+2.3	+71	+110	+1.30	+13.5	+18
FL	Marb	RE	Fat	\$M	\$C	
+1.23	+0.14	+0.69	+0.027	+103	+240	



- A stout, square-made bull that has a lot of eye-appeal
- Dam is a nice young cow

25

SRS HONEST 3138N

tattoo: 3138N	birth: 01/12/25	reg: 21361456
ANGUS BULL	Soo Line Motive 9016#	Birth Weight 73
SRS Blockbuster 2256B	SRS Rose 2256Z	205 Weight 768
SRS Honest 3136H	Koupals B&B Identity#	Weaning Rat 110
WK Blackbird 2224#	WK Blackbird 5066	Sire Avg BW 122@80
SRS Headline 2277H	Musgrave 316 Stunner#	Dam Avg BW 1@73
SRS Pride 3138	SRS Rose 2277Z#	Dam WN Prod 1@110
SRS Pride 7238E	Vision Unanimous 1418#	
	SRS Pride 2211Z	

Angus Association EPDs						
CED	BW	WW	YW	SC	HP	Milk
+4	-0.3	+65	+104	+1.33	+10.2	+17
FL	Marb	RE	Fat	\$M	\$C	
+1.18	+0.65	+0.03	+0.071	+78	+212	



- A cool-fronted bull that has tremendous thickness down his top and in his quarter
- These Honest sons are hard to fault in type and kind

27

SRS HONEST 1175N

tattoo: 1175N	birth: 01/22/25	reg: 21361057
ANGUS BULL	Soo Line Motive 9016#	Birth Weight 81
SRS Blockbuster 2256B	SRS Rose 2256Z	205 Weight 712
SRS Honest 3136H	Koupals B&B Identity#	Weaning Rat 103
WK Blackbird 2224#	WK Blackbird 5066	Sire Avg BW 122@80
Square B Atlantis 8060	S A V Rainfall 6846#	Dam Avg BW 3@81
SRS Tillie 1175J	Elbanna of Conanga 1209	Dam WN Prod 3@104
KR Tillie 3079	Pine Ridge Hammer S322#	
	WK Tillie 8467	

Angus Association EPDs						
CED	BW	WW	YW	SC	HP	Milk
+7	+1.7	+79	+126	+0.68	+14.3	+24
FL	Marb	RE	Fat	\$M	\$C	
+1.15	+0.43	+0.46	+0.070	+98	+254	



- Heifer Bull Potential**
- A long-made bull that is level-designed
 - A maternal brother to SRS Loki





REFERENCE SIRE

SRS Keynote 1047K



FULL BROTHER

SRS Marshall 4244M, Full Brother to Lot 28

28 **SRS KEYNOTE 0136N**
 tattoo: 0136N birth: 01/19/25 reg: +21353169

ANGUS BULL
 Reich Ripper 37B DMM Riptide 2Z
SRS Keynote 1047K Reich Pride 68Z
 SRS Rose 2256Z Tombstone 050#
 S R S Rose 6148S#
 Musgrave Foundation# Kesslers Frontman R001#
SRS Blossom 4244B MCATL Blackcap Juara 29-434
 SRS Joyce 2208Z Tombstone 050#
 Basin Joyce S474#

Birth Weight	90
205 Weight	666
Weaning Rat	ET
Sire Avg BW	58@80
Dam Avg BW	8@93
Dam WN Prod	8@114

Angus Association EPDs						
CED	BW	WW	YW	SC	HP	Milk
+1	+2.6	+61	+104	+83	+11.9	+26
FL	Marb	RE	Fat	\$M	\$C	
+98	+21	+47	+008	+49	+181	



- A balanced bull that is long, deep, and thick
- Dam is an incredibly big performance donor that consistently produces top end calves

SRS Donor Dam



SRS BLOSSOM 4244B

birth: 01/28/14 reg: 17932725 **WWR 8@114**

Our thickest donor cow that has incredible depth and spring of rib tied into a wedge-shaped profile. This now deceased high performance donor still has front-end embryo calves in our sale. She produced SRS Marshall, a top selling bull in our sale last year. She has many top producing daughters working in our herd.

4244B Progeny

Dam of Lot 28



29

SRS KEYNOTE 199N

tattoo: 199N birth: 02/17/25 reg: +21353172

ANGUS BULL

Reich Ripper 37B
SRS Keynote 1047K
 SRS Rose 2256Z

DMM Riptide 2Z
 Reich Pride 68Z
 Tombstone 050#
 S R S Rose 6148S#
 O C C Juneau 807J#
 Coleman Donna 714
 N Bar Emulation EXT#
 KMK Donna J311

Birth Weight	91
205 Weight	699
Weaning Rat	ET
Sire Avg BW	58@80
Dam Avg BW	7@74
Dam WN Prod	7@105

Coleman Juneau 044#
Coleman Donna 6317#
 Coleman Donna 801

Angus Association EPDs						
CED	BW	WW	YW	SC	HP	Milk
+5	+2.8	+57	+89	+85	+13.0	+29
FL	Marb	RE	Fat	\$M	\$C	
+1.06	+1.18	+69	-.026	+68	+191	



- A well-made, thick bull that has an outcross pedigree
- Dam is an extremely fancy cow that we selected out of Coleman's Fall dispersal sale
- Her offspring are proving to be the right type and kind



REFERENCE DAM

Coleman Donna 6317, Dam of Lots 18, 29 and 96



MATERNAL SISTER

SRS Donna 5109N, Maternal Sister to Lot 29

30

SRS PATRIARCH 3114N

tattoo: 3114N birth: 01/18/25 reg: 21361103

ANGUS BULL

S S Niagara Z29#
Tehama Patriarch F028#
 Tehama Elite Blackbird D826

Hoover Dam#
 Jet S S X144
 Connealy Thunder#
 Tehama Elite Blackbird Z630
 SRS Jackson 487J
 Coleman Bravo 6313#
 Pine Coulee Black Annie B87
 Tombstone 050#
 S R S Rose 6148S#

Birth Weight	86
205 Weight	762
Weaning Rat	109
Sire Avg BW	18@74
Dam Avg BW	1@86
Dam WN Prod	1@109

Angus Association EPDs						
CED	BW	WW	YW	SC	HP	Milk
+7	+0.4	+72	+135	+1.79	+13.8	+34
FL	Marb	RE	Fat	\$M	\$C	
+1.12	+0.94	+0.36	+0.080	+103	+285	



Heifer Bull Potential

- A long, smooth-made bull with great performance

31

SRS PATRIARCH 3277N

tattoo: 3277N birth: 01/25/25 reg: 21361367

ANGUS BULL

S S Niagara Z29#
Tehama Patriarch F028#
 Tehama Elite Blackbird D826

Hoover Dam#
 Jet S S X144
 Connealy Thunder#
 Tehama Elite Blackbird Z630
 SRS Historic 2208H
 Hoover No Doubt#
 SRS Joyce 2208Z
SRS Rose 3277
 SRS Rose 9300G
 SRS Blockbuster 2256B
 S R S Rose 8128U

Birth Weight	68
205 Weight	733
Weaning Rat	105
Sire Avg BW	18@74
Dam Avg BW	1@68
Dam WN Prod	1@105

Angus Association EPDs						
CED	BW	WW	YW	SC	HP	Milk
+4	+1.6	+76	+140	+1.40	+11.0	+22
FL	Marb	RE	Fat	\$M	\$C	
+1.06	+0.84	+0.24	+0.065	+74	+263	





Hummel South America

32 SRS SOUTH AMERICA 501N
 tattoo: 501N birth: 01/30/25 reg: +21361236

ANGUS BULL
 Don Aparicio Serrucho57 Max Don Jose 176 Maxi
Hummel South America Hummel South America Don Aparicio Serranias 57
 Rubeta Fontana 7567 Consenza Don Roberto 338
 Rubeta Fontana 6207

Birth Weight	93
205 Weight	746
Weaning Rat	ET
Sire Avg BW	10@93
Dam Avg BW	na
Dam WN Prod	na

RR 7407 Rainmaker 2154 A A R Rainmaker 7407#
TLA Beauty 5R H A Concepciona 0224#
 Terriene Beauty 35F Terriene Executive Pride 10D
 KBJ Beauty 257B

33 SRS SOUTH AMERICA 7213N
 tattoo: 7213N birth: 02/01/25 reg: +21369818

ANGUS BULL
 Don Aparicio Serrucho57 Max Don Jose 176 Maxi
Hummel South America Hummel South America Don Aparicio Serranias 57
 Rubeta Fontana 7567 Consenza Don Roberto 338
 Rubeta Fontana 6207

Birth Weight	95
205 Weight	756
Weaning Rat	ET
Sire Avg BW	10@93
Dam Avg BW	na
Dam WN Prod	5@106

Rito 707 of Ideal 3407 7075 R R Rito 707#
S A V Blackcap May 1442 Ideal 3407 of 1418 076
 S A V Blackcap May 4136 S A V 8180 Traveler 004#
 S A V May 2397#

Angus Association EPDs						
CED	BW	WW	YW	SC	HP	Milk
+0	+1.6	+58	+104	+94	+12.2	+23
FL	Marb	RE	Fat	\$M	\$C	
+1.08	+0.43	+0.67	+0.038	+50	+225	

ANGUSGS
 Powered by Neogen Genescope
 VIDEO

Angus Association EPDs						
CED	BW	WW	YW	SC	HP	Milk
-2	+3.4	+64	+108	+1.21	+10.8	+12
FL	Marb	RE	Fat	\$M	\$C	
+1.06	-0.20	+0.92	+0.009	+48	+161	

ANGUSGS
 Powered by Neogen Genescope
 VIDEO

- A very long-spined bull with a big hip and an outcross pedigree
- Dam needs little introduction as she is the mother to Soo-Line Motive
- Daughters should be incredible out of this bull

- A deep-made, square-hipped bull out of South America
- Dam is a full sister to Resource and Renown



TLA Beauty 5R, Dam of Lot 32



S A V Blackcap May 1442, Dam of Lot 33





34 **SRS LAWMAN 1254N**
 tattoo: 1254N birth: 01/28/25 reg: 21361075

ANGUS BULL
 Millars Duke 816
SRS Lawman 7154L
 SRS Blossom 4244B

B Bar Windy 7 3575
 Millars Queen Lass 5273#
 Musgrave Foundation#
 SRS Joyce 2208Z

Baldridge 38 Special#
SRS Pride 1254J
 SRS Pride 9293G

EF Commando 1366#
 Baldridge Isabel Y69
 LD Capitalist 316#
 SRS Pride 7275E

Birth Weight	71
205 Weight	785
Weaning Rat	113
Sire Avg BW	16@83
Dam Avg BW	3@73
Dam WN Prod	3@105

36 **SRS JACKSON 3151N**
 tattoo: 3151N birth: 01/14/25 reg: 21361115

ANGUS BULL
 Coleman Bravo 6313#
SRS Jackson 487J
 Pine Coulee Black Annie B87

Coleman Charlo 0256#
 Coleman Donna 714
 Connealy Onward#
 War Hill Blackbone Annie

Square B Atlantis 8060
SRS Rose 3151
 S R S Rose 0119X

S A V Rainfall 6846#
 Elbanna of Conanga 1209
 S R S Trademark 732T
 S R S Rose 6146S

Birth Weight	82
205 Weight	786
Weaning Rat	112
Sire Avg BW	121@82
Dam Avg BW	1@82
Dam WN Prod	1@112

Angus Association EPDs						
CED	BW	WW	YW	SC	HP	Milk
+9	-1.4	+72	+115	+69	+11.9	+28
FL	Marb	RE	Fat	\$M	\$C	
+1.09	+4.2	+4.7	+0.056	+85	+232	

ANGUSGS
 Powered by Neogen Genescope
 VIDEO

Angus Association EPDs						
CED	BW	WW	YW	SC	HP	Milk
+11	+1.2	+73	+120	+1.48	+13.5	+24
FL	Marb	RE	Fat	\$M	\$C	
+1.07	+5.4	+1.00	+0.015	+93	+282	

ANGUSGS
 Powered by Neogen Genescope
 VIDEO

Heifer Bull Potential

- A big performance bull with lots of internal dimension
- Dam is a moderate young cow that is thick-made, feminine-fronted with an excellent udder
- A maternal sister sold this fall for \$30,000

Heifer Bull Potential

- A bull with incredible type and kind
- A massive bull that is long, deep, thick and level-designed
- Dam is an exciting young cow that has an incredible maternal lineage



MATERNAL SISTER

SRS Pride 4205, Maternal Sister to Lot 34



REFERENCE SIRE

SRS Jackson 487J

35 **SRS LAWMAN 7291N**
 tattoo: 7291N birth: 02/15/25 reg: 21361180

ANGUS BULL
 Millars Duke 816
SRS Lawman 7154L
 SRS Blossom 4244B

Bobcat Big Sky C64
SRS Kathy 7291E
 S R S Kathy 8140U

B Bar Windy 7 3575
 Millars Queen Lass 5273#
 Musgrave Foundation#
 SRS Joyce 2208Z

Musgrave Big Sky#
 Mytty Dixie Erica 1163#
 Sitz Onward 495R
 Tar Kathy 8003

Birth Weight	93
205 Weight	780
Weaning Rat	113
Sire Avg BW	16@83
Dam Avg BW	6@80
Dam WN Prod	7@101

Angus Association EPDs						
CED	BW	WW	YW	SC	HP	Milk
+0	+2.8	+80	+130	+1.27	+11.8	+29
FL	Marb	RE	Fat	\$M	\$C	
+1.11	+1.4	+8.0	-.001	+89	+269	

ANGUSGS
 Powered by Neogen Genescope
 VIDEO

- Big performance bull with a lot of thickness





39 **SRS DIGNITY 614N**
 tattoo: 614N birth: 01/24/25 reg: +21361452
ANGUS BULL
 Sitz Stellar 726D#
SITZ Dignity 599J Sitz Miss Burgess 1856
 SITZ Barbaramere Nell 53F# Sitz Invasion 574D
 SITZ Barbaramere Nell 105D
 Connealy Final Product# Connealy Product 568
 Ebonista of Conanga 471#
SITZ Blackbird 334 Sitz Uncommon#
 SITZ Blackbird 532# Sitz Blackbird 6690

Birth Weight	80
205 Weight	677
Weaning Rat	ET
Sire Avg BW	7@85
Dam Avg BW	9@81
Dam WN Prod	9@101

Angus Association EPDs						
CED	BW	WW	YW	SC	HP	Milk
+6	+0.3	+77	+141	+.45	+14.1	+33
FL	Marb	RE	Fat	\$M	\$C	
+1.10	+.50	+.98	+.056	+96	+291	

ANGUSGS
 Powered by **Netgen Genetics**
VIDEO

Heifer Bull Potential

- Level-designed bull with great length and thickness
- Dam is absolutely beautiful in her design with a perfect udder at 12 years of age



REFERENCE DAM

Sitz Blackbird 334, Dam of Lots 6, 14 and 39



FULL BROTHER

SRS Dignity 907N
 Lot 14 in this sale and Full brother to Lot 39



37 **SRS JACKSON 7214N**
 tattoo: 7214N birth: 01/23/25 reg: 21361173
ANGUS BULL
 Coleman Bravo 6313# Coleman Charlo 0256#
 Coleman Donna 714
SRS Jackson 487J
 Pine Coulee Black Annie B87 Connealy Onward#
 War Hill Blackbone Annie
 HA Prime Cut 4493# Vermillion Sirlain
 HA Miss Blackcap 9127
SRS Joyce 7214E Brooks Ext 792#
 Basin Joyce S474# Basin Joyce 2264

Birth Weight	89
205 Weight	738
Weaning Rat	107
Sire Avg BW	121@82
Dam Avg BW	7@82
Dam WN Prod	7@99

Angus Association EPDs						
CED	BW	WW	YW	SC	HP	Milk
+9	+0.2	+64	+113	+2.13	+8.7	+35
FL	Marb	RE	Fat	\$M	\$C	
+1.03	+.42	+.48	-.007	+61	+223	

ANGUSGS
 Powered by **Netgen Genetics**
VIDEO

Heifer Bull Potential

- Clean-fronted, well-balanced bull that will catch your eye in the pen
- Dam is a broody cow with lots of thickness



38 **SRS JACKSON 3263N**
 tattoo: 3263N birth: 01/13/25 reg: 21361165
ANGUS BULL
 Coleman Bravo 6313# Coleman Charlo 0256#
 Coleman Donna 714
SRS Jackson 487J
 Pine Coulee Black Annie B87 Connealy Onward#
 War Hill Blackbone Annie
 SRS Honest 3136H SRS Blockbuster 2256B
 WK Blackbird 2224#
SRS Annie 3263 Musgrave Feature
 SRS Annie 1212J Pine Coulee Black Annie E55

Birth Weight	68
205 Weight	718
Weaning Rat	103
Sire Avg BW	121@82
Dam Avg BW	1@68
Dam WN Prod	1@103

Angus Association EPDs						
CED	BW	WW	YW	SC	HP	Milk
+15	-1.2	+55	+92	+.83	+15.6	+30
FL	Marb	RE	Fat	\$M	\$C	
+1.13	+.08	+.73	+.019	+113	+252	

ANGUSGS
 Powered by **Netgen Genetics**
VIDEO

Heifer Bull Potential

- Another Jackson son you can't miss
- Deep, square-made and thick



REFERENCE SIRE

Bar-E-L Chief 81K



LOT 42

SRS LOKI 1208N

42 tattoo: 1208N birth: 02/18/25 reg: 21361066
ANGUS BULL
 SRS Jackson 487J Coleman Bravo 6313#
 SRS Loki 1175L Pine Coulee Black Annie B87
 SRS Tillie 1175J Square B Atlantis 8060
 KR Tillie 3079
 Musgrave Feature Musgrave Sky High 1535#
SRS Rose 1208J Musgrave Pride 1416-166
 SRS Rose 2256Z Tombstone 050#
 S R S Rose 6148S#

Birth Weight	100
205 Weight	761
Weaning Rat	110
Sire Avg BW	11@91
Dam Avg BW	3@85
Dam WN Prod	3@105

Angus Association EPDs						
CED	BW	WW	YW	SC	HP	Milk
-1	+5.0	+82	+131	+1.22	+13.0	+24
FL	Marb	RE	Fat	\$M	\$C	
+1.03	+.77	+.68	+.002	+74	+284	



- A big performance bull that is hard to miss in the pen
- This bull has length, thickness and added depth
- His sire is SRS Loki which is a long made bull with huge performance and a great look



LOT 40

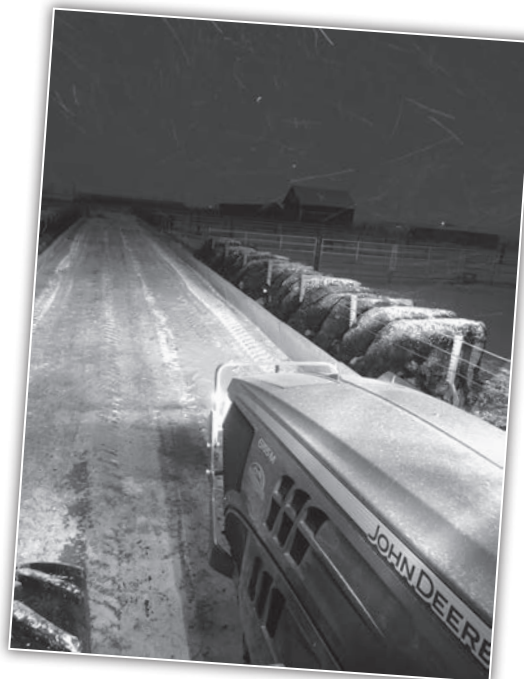
SRS CHIEF 0245N

40 tattoo: 0245N birth: 01/26/25 reg: 21360941
ANGUS BULL
 Brooking National 0144 S A V Renovation 6822
 Bar-E-L Chief 81K Soo Line Rose 1019
 Bar-E-L Naomi 27C Bar-E-L Natural Law 52Y
 Bar-E-L Naomi 83U
 MOGCK Entice# SydGen Enhance#
SRS Rose 0245H# MOGCK Erica 2255#
 SRS Rose 5220C Soo Line Motive 9016#
 S R S Rose 6148S#

Angus Association EPDs						
CED	BW	WW	YW	SC	HP	Milk
+2	+2.8	+64	+113	+1.44	+13.3	+26
FL	Marb	RE	Fat	\$M	\$C	
+1.06	+.51	+.79	+.026	+82	+271	



- A Chief son with an incredible pattern to him
- Dam is a young cow we are excited about that has a great udder



41 tattoo: 1206N birth: 01/29/25 reg: 21361062
ANGUS BULL
 Brooking National 0144 S A V Renovation 6822
 Bar-E-L Chief 81K Soo Line Rose 1019
 Bar-E-L Naomi 27C Bar-E-L Natural Law 52Y
 Bar-E-L Naomi 83U
 MOGCK Entice# SydGen Enhance#
SRS Chloe 1206J MOGCK Erica 2255#
 SRS Chloe 2205Z TC Total 410#
 Basin Chloe 2P31#

Angus Association EPDs						
CED	BW	WW	YW	SC	HP	Milk
-9	+6.3	+63	+104	+1.59	+11.9	+29
FL	Marb	RE	Fat	\$M	\$C	
+1.10	+.55	+.82	+.020	+66	+276	



- A long-designed bull with a big top



REFERENCE
SIRE

SRS Honest 3136H

45 **SRS HONEST 0277N**
 tattoo: 0277N birth: 02/06/25 reg: 21360961

ANGUS BULL
 SRS Blockbuster 2256B Soo Line Motive 9016#
 SRS Rose 2256Z

SRS Honest 3136H
 WK Blackbird 2224# Koupals B&B Identity#
 WK Blackbird 5066

Musgrave Feature Musgrave Sky High 1535#
 Musgrave Pride 1416-166

SRS Fanny 0277H
 Ox Bow Fanny 8109 Connealy Capitalist 028#
 Ox Bow Fanny 0105

Birth Weight	92
205 Weight	693
Weaning Rat	100
Sire Avg BW	122@80
Dam Avg BW	4@87
Dam WN Prod	4@102

Angus Association EPDs						
CED	BW	WW	YW	SC	HP	Milk
+6	+1.8	+67	+113	+11	+16.7	+27
FL	Marb	RE	Fat	\$M	\$C	
+1.16	+0.29	+0.64	+0.013	+101	+246	

- A correct made bull that has lots of length and stoutness



43 **SRS HONEST 4208N**
 tattoo: 4208N birth: 02/14/25 reg: 21361166

ANGUS BULL
 SRS Blockbuster 2256B Soo Line Motive 9016#
 SRS Rose 2256Z

SRS Honest 3136H
 WK Blackbird 2224# Koupals B&B Identity#
 WK Blackbird 5066

Tombstone 050# Sitz Upward 307R#
 Mytty Countess 906

SRS Pride 4208B
 Vermilion Pride 8071 Leachman Right Time#
 Vermilion Pride 6446#

Birth Weight	92
205 Weight	720
Weaning Rat	104
Sire Avg BW	122@80
Dam Avg BW	10@86
Dam WN Prod	10@104

Angus Association EPDs						
CED	BW	WW	YW	SC	HP	Milk
+6	+2.4	+65	+105	+25	+16.6	+29
FL	Marb	RE	Fat	\$M	\$C	
+1.26	+0.01	+0.66	+0.020	+124	+251	

- Another Honest son that has that great look we appreciate it
- Dam is still working in the herd at 12 years of age



MATERNAL
SISTER

SRS Fanny 4194M, Maternal Sister to Lot 45

44 **SRS HONEST 0286N**
 tattoo: 0286N birth: 01/26/25 reg: 21361044

ANGUS BULL
 SRS Blockbuster 2256B Soo Line Motive 9016#
 SRS Rose 2256Z

SRS Honest 3136H
 WK Blackbird 2224# Koupals B&B Identity#
 WK Blackbird 5066

MOGCK Entice# SydGen Enhance#
 MOGCK Erica 2255#

SRS Lass 0286H#
 SRS Lass 8246F SRS Balance 0609B
 SRS Lass 3242a

Birth Weight	96
205 Weight	716
Weaning Rat	103
Sire Avg BW	122@80
Dam Avg BW	3@81
Dam WN Prod	4@108

Angus Association EPDs						
CED	BW	WW	YW	SC	HP	Milk
+1	+1.8	+66	+111	+48	+13.0	+28
FL	Marb	RE	Fat	\$M	\$C	
+1.10	+0.70	+0.78	+0.003	+88	+253	

- A long spined bull that is square in his lines

46 **SRS HONEST 3169N**
 tattoo: 3169N birth: 01/29/25 reg: 21361455

ANGUS BULL
 SRS Blockbuster 2256B Soo Line Motive 9016#
 SRS Rose 2256Z

SRS Honest 3136H
 WK Blackbird 2224# Koupals B&B Identity#
 WK Blackbird 5066

SITZ Directive 720J Sitz Resilient 10208
 SITZ Emma 26G

SRS Pride 3169
 SRS Pride 5207C# Tombstone 050#
 Vermilion Pride 8071

Birth Weight	81
205 Weight	807
Weaning Rat	100
Sire Avg BW	122@80
Dam Avg BW	1@81
Dam WN Prod	1@100

Angus Association EPDs						
CED	BW	WW	YW	SC	HP	Milk
-2	+2.9	+65	+113	+1.03	+13.4	+27
FL	Marb	RE	Fat	\$M	\$C	
+1.15	+0.53	+0.22	+0.041	+80	+242	

- A typical Honest son, excellent in his type and kind



MATERNAL
BROTHER

SRS Honest 0286K, Maternal Brother to Lot 44

47 **SRS GLACIER 3235N**
 tattoo: 3235N birth: 01/16/25 reg: 21361146

ANGUS BULL
 LD Capitalist 316# Connealy Capitalist 028#
 LD Dixie Erica 2053

SRS Glacier 2256G
 SRS Rose 2256Z Tombstone 050#
 S R S Rose 6148S#

SRS Jackson 487J Coleman Bravo 6313#
 Pine Coulee Black Annie B87

SRS Pride 3235
 SRS Pride 1123J SRS Engage 4221E
 Basin Pride 953R#

Birth Weight	73
205 Weight	710
Weaning Rat	101
Sire Avg BW	94@75
Dam Avg BW	1@73
Dam WN Prod	1@101

Angus Association EPDs						
CED	BW	WW	YW	SC	HP	Milk
+11	-1.0	+55	+94	+1.38	+13.9	+36
FL	Marb	RE	Fat	\$M	\$C	
+1.16	+0.23	+0.13	+0.080	+89	+206	

Heifer Bull Potential

- Long and thick





REFERENCE SIRE

SRS Logical 5273L



LOT 48

48 SRS LOGICAL 1104N

tattoo: 1104N birth: 01/23/25 reg: 21360978

ANGUS BULL	Hoover No Doubt#	Birth Weight	79
SRS Historic 2208H	SRS Joyce 2208Z	205 Weight	763
SRS Logical 5273L	Connealy Final Product#	Weaning Rat	110
SITZ Blackbird 334	SITZ Blackbird 532#	Sire Avg BW	43@74
S A V Downpour 8794	S A V Rainfall 6846#	Dam Avg BW	3@78
SRS Chloe 1104J	S A V Madame Pride 4407#	Dam WN Prod	3@104
SRS Chloe 2205Z	TC Total 410#		
	Basin Chloe 2P31#		

Angus Association EPDs						
CED	BW	WW	YW	SC	HP	Milk
+5	+1.0	+59	+109	+1.8	+12.9	+29
FL	Marb	RE	Fat	\$M	\$C	
+1.10	+1.10	+7.5	-.003	+78	+318	

Heifer Bull Potential

- A moderate bull that has incredible thickness and added depth of rib
- Dam is a beautiful young Downpour daughter

49 SRS LOGICAL 3251N

tattoo: 3251N birth: 01/23/25 reg: 21361164

ANGUS BULL	Hoover No Doubt#	Birth Weight	81
SRS Historic 2208H	SRS Joyce 2208Z	205 Weight	719
SRS Logical 5273L	Connealy Final Product#	Weaning Rat	103
SITZ Blackbird 334	SITZ Blackbird 532#	Sire Avg BW	43@74
SRS Glacier 2256G	LD Capitalist 316#	Dam Avg BW	1@81
SRS Pride 3251	SRS Rose 2256Z	Dam WN Prod	1@103
SRS Pride 1172J	Square B Atlantis 8060		
	SRS Pride 2244Z		

Angus Association EPDs						
CED	BW	WW	YW	SC	HP	Milk
-2	+2.3	+66	+118	+1.67	+13.4	+34
FL	Marb	RE	Fat	\$M	\$C	
+1.16	+1.05	+9.0	+.013	+80	+295	

- A bull that is stout and thick
- Dam is a beautiful first calf heifer

Angus Avg EPDs Non-Parent Bulls CED +6 BW +1.2 WW +68 YW +120 SC +89 HP +11.7 Milk +27 FL +1.07 Marb +.78 RE +.71 Fat +.020 \$M +66 \$C +268

50 SRS LOGICAL 5220N

tattoo: 5220N birth: 02/14/25 reg: 21361471

ANGUS BULL	Hoover No Doubt#	Birth Weight	72
SRS Historic 2208H	SRS Joyce 2208Z	205 Weight	716
SRS Logical 5273L	Connealy Final Product#	Weaning Rat	103
SITZ Blackbird 334	SITZ Blackbird 532#	Sire Avg BW	43@74
Soo Line Motive 9016#	HF Kodiak 5R	Dam Avg BW	8@85
SRS Rose 5220C	TLA Beauty 5R	Dam WN Prod	8@104
S R S Rose 6148S#	S A V 004 Density 4336#		
	Vermilion Rose 7566#		

Angus Association EPDs						
CED	BW	WW	YW	SC	HP	Milk
+4	-0.2	+54	+96	+3.9	+13.8	+22
FL	Marb	RE	Fat	\$M	\$C	
+1.21	+.75	+.27	-.013	+74	+235	

- A smooth made bull that is a natural son out of an 11 year old donor
- Dam is arguably the best cow in our herd
- Dam is incredibly long, thick, and sound
- Her daughters are quickly becoming favorites with a heifer calf selling for \$13,000 this past fall



REFERENCE DAM

SRS Rose 5220C, Dam of Lots 4, 5, 20, 23, 24, 50, 73

51 SRS LOGICAL 3211N

tattoo: 3211N birth: 01/16/25 reg: 21361133

ANGUS BULL	Hoover No Doubt#	Birth Weight	73
SRS Historic 2208H	SRS Joyce 2208Z	205 Weight	710
SRS Logical 5273L	Connealy Final Product#	Weaning Rat	101
SITZ Blackbird 334	SITZ Blackbird 532#	Sire Avg BW	43@74
SRS Headline 2277H	Musgrave 316 Stunner#	Dam Avg BW	1@73
SRS Pride 3211	SRS Rose 2277Z#	Dam WN Prod	1@101
SRS Pride 0228H	SRS Blockbuster 2256B		
	SRS Pride 2214Z		

Angus Association EPDs						
CED	BW	WW	YW	SC	HP	Milk
+9	+0.0	+54	+102	+1.28	+11.1	+30
FL	Marb	RE	Fat	\$M	\$C	
+1.15	+.50	+.51	+.033	+83	+250	

Heifer Bull Potential

- A long, level made bull with lots of dimension

52 SRS LOGICAL 3244N

tattoo: 3244N birth: 01/23/25 reg: 21361161

ANGUS BULL	Hoover No Doubt#	Birth Weight	77
SRS Historic 2208H	SRS Joyce 2208Z	205 Weight	729
SRS Logical 5273L	Connealy Final Product#	Weaning Rat	104
SITZ Blackbird 334	SITZ Blackbird 532#	Sire Avg BW	43@74
Sitz Resilient 10208	Sitz Stellar 726D#	Dam Avg BW	1@77
SRS Elba 3244	Sitz Miss Burgess 1856	Dam WN Prod	1@104
SRS Elba 1137J	SRS Engage 4221E		
	SRS Elba 5283C#		

Angus Association EPDs						
CED	BW	WW	YW	SC	HP	Milk
+4	+1.5	+69	+126	+5.2	+14.1	+33
FL	Marb	RE	Fat	\$M	\$C	
+1.14	+.69	+.56	+.004	+101	+298	

LOTS 53-55 FLUSH BROTHERS

- A set of ET brothers that are long-made
- Dam is an eye appealing, balanced 10 year old cow with a tremendous udder



SRS Lass 6241D
Pathfinder Dam of Lots 53, 54, 55, 102, 103 and 107



SRS Lass 5105N, Full Sister to Lot 53, 54, and 55



56 SRS FAIR-N-SQUARE 2188N
tattoo: 2188N birth: 01/30/25 reg: 21361357

ANGUS BULL	Connealy Confidence Plus#	Birth Weight	80
Woodhill Blueprint#	Woodhill Evergreen Z291-B233	205 Weight	678
Myers Fair-N-Square M39	Connealy Thunder#	Weaning Rat	98
Myers Miss Beauty M136	Myers Miss Beauty M476#	Sire Avg BW	42@87
SRS Historic 2208H	Hoover No Doubt#	Dam Avg BW	2@80
SRS Evergreen 2188	SRS Joyce 2208Z	Dam WN Prod	2@102
SRS Evergreen 6238D	HF Bank Roll 84B		
	Ox Bow Eisa Evergreen 226#		

Angus Association EPDs							ANGUSGS Powered by Neogen Genesys
CED	BW	WW	YW	SC	HP	Milk	
-2	+1.9	+66	+117	+12	+12.2	+25	
FL	Marb	RE	Fat	\$M	\$C		
+1.05	+0.83	+0.44	+0.034	+65	+260		

- Exceptional style and eye appeal in this bull

53 SRS LOGICAL 6242N
tattoo: 6242N birth: 02/03/25 reg: +21361245

ANGUS BULL	Hoover No Doubt#	Birth Weight	80
SRS Historic 2208H	SRS Joyce 2208Z	205 Weight	802
SRS Logical 5273L	Connealy Final Product#	Weaning Rat	ET
SITZ Blackbird 334	SITZ Blackbird 532#	Sire Avg BW	43@74
SRS Accolade 0336a	S Chisum 6175#	Dam Avg BW	8@88
SRS Lass 6241D#	Basin Joyce S474#	Dam WN Prod	8@106
SRS Lass 3207a	Tombstone 050#		
	S R S Lass 0589R		

Angus Association EPDs							ANGUSGS Powered by Neogen Genesys
CED	BW	WW	YW	SC	HP	Milk	
+7	+1.7	+62	+108	+76	+10.7	+23	
FL	Marb	RE	Fat	\$M	\$C		
+1.16	+0.02	+0.70	+0.015	+79	+227		

Heifer Bull Potential

54 SRS LOGICAL 9134N
tattoo: 9134N birth: 01/31/25 reg: +21361252

ANGUS BULL	Birth Weight	80
Sire: SRS Logical 5273L	205 Weight	758
Dam: SRS Lass 6241D#	Weaning Rat	ET

Angus Association EPDs							ANGUSGS Powered by Neogen Genesys
CED	BW	WW	YW	SC	HP	Milk	
+12	-0.9	+62	+100	+1.13	+12.3	+30	
FL	Marb	RE	Fat	\$M	\$C		
+1.23	+0.06	+0.68	-0.013	+102	+221		

Heifer Bull Potential

55 SRS LOGICAL 1301N
tattoo: 1301N birth: 02/05/25 reg: +21361231

ANGUS BULL	Birth Weight	80
Sire: SRS Logical 5273L	205 Weight	726
Dam: SRS Lass 6241D#	Weaning Rat	ET

Angus Association EPDs							ANGUSGS Powered by Neogen Genesys
CED	BW	WW	YW	SC	HP	Milk	
+10	+0.1	+52	+94	+85	+14.4	+23	
FL	Marb	RE	Fat	\$M	\$C		
+1.15	+0.35	+0.76	-0.007	+81	+234		

Heifer Bull Potential

**Balancing traits for over four decades,
emphasizing real-world cattle with
these essential traits:**



good feet and legs



udder quality





tight sheath



good disposition



**At Skinner Ranch,
these traits are not optional.**

57

SRS FAIR-N-SQUARE 1235N

tattoo: 1235N birth: 01/19/25 reg: 21361363

ANGUS BULL

Woodhill Blueprint#
Myers Fair-N-Square M39
 Myers Miss Beauty M136

Connealy Confidence Plus#
 Woodhill Evergreen Z291-B233

Connealy Thunder#
 Myers Miss Beauty M476#

Baldridge 38 Special#

SRS Blackbird 1235J
 SRS Blackbird 9232G

EF Commando 1366#
 Baldridge Isabel Y69

Mill Bar Hickok 7242#
 S R S Blackbird 1254Y

Birth Weight	91
205 Weight	687
Weaning Rat	99
Sire Avg BW	42@87
Dam Avg BW	3@83
Dam WN Prod	3@103

Angus Association EPDs						
CED	BW	WW	YW	SC	HP	Milk
-5	+3.6	+86	+143	+1.28	+12.4	+32
FL	Marb	RE	Fat	\$M	\$C	
+1.08	+0.73	+0.84	+0.015	+0.87	+2.95	



MATERNAL SISTER

SRS Blackbird 3267L, Maternal Sister to Lot 57

• Extra length in an ideal package



SRS Donor Dam



SRS JOYCE 2208Z

birth: 02/02/12 reg: 17308147 **WWR 8@101**

A cow that has been a beautiful Angus female since she was a heifer calf. She transmits a striking presence and eye appeal into all her progeny. This donor cow has impeccable feet and udder. Notable accomplishments include SRS Historic, SRS Longrun, SRS Masterplan and SRS Blossom 4244B.

2208Z Progeny

Dam of Lots 58, 59, and 60



58**SRS DOWNPOUR 7125N**

tattoo: 7125N birth: 02/19/25 reg: +21361293

ANGUS BULL

S A V Rainfall 6846# Coleman Charlo 0256#
 S A V Downpour 8794 S A V Blackcap May 4136
 S A V Madame Pride 4407# S A V Resource 1441#
 S A V Madame Pride 0235

Tombstone 050# Sitz Upward 307R#
SRS Joyce 2208Z Mytty Countess 906
 Basin Joyce S474# Brooks Ext 792#
 Basin Joyce 2264

Birth Weight	96
205 Weight	782
Weaning Rat	ET
Sire Avg BW	27@89
Dam Avg BW	8@78
Dam WN Prod	8@101

Angus Association EPDs						
CED	BW	WW	YW	SC	HP	Milk
-3	+4.3	+81	+141	+1.89	+11.5	+24
FL	Marb	RE	Fat	\$M	\$C	
+1.08	+0.48	+0.13	+0.074	+48	+205	



- Rugged-made bull with great length
- Dam is a beautifully designed Angus female with a perfect udder

**MATERNAL BROTHER**

SRS Historic 2208H
 Maternal Brother to Lots 58, 59, and 60

**MATERNAL BROTHER**

SRS Matersplan 6152M
 Maternal Brother to Lots 58, 59, and 60

LOTS 59-60**FLUSH BROTHERS**

- Set of ET brothers that are great in their makeup
- These bulls should produce phenomenal daughters
- Dam is a beautifully designed Angus female with a perfect udder

**59****SRS KICKOFF 0188N**

tattoo: 0188N birth: 02/15/25 reg: +21353170

ANGUS BULL

Square B Atlantis 8060 S A V Rainfall 6846#
SRS Kickoff 5220K Elbanna of Conanga 1209
 SRS Rose 5220C Soo Line Motive 9016#
 SRS Rose 6148S#

Tombstone 050# Sitz Upward 307R#
SRS Joyce 2208Z Mytty Countess 906
 Basin Joyce S474# Brooks Ext 792#
 Basin Joyce 2264

Birth Weight	86
205 Weight	669
Weaning Rat	ET
Sire Avg BW	27@84
Dam Avg BW	8@78
Dam WN Prod	8@101

Angus Association EPDs						
CED	BW	WW	YW	SC	HP	Milk
+0	+0.6	+67	+108	+0.99	+9.9	+32
FL	Marb	RE	Fat	\$M	\$C	
+1.02	+0.60	+0.38	+0.068	+79	+257	

**60****SRS KICKOFF 7231N**

tattoo: 7231N birth: 02/02/25 reg: +21415495

ANGUS BULL

Sire: **SRS Kickoff 5220K**
 Dam: **SRS Joyce 2208Z**

Birth Weight	86
205 Weight	738
Weaning Rat	ET

Angus Association EPDs						
CED	BW	WW	YW	SC	HP	Milk
-5	+2.4	+67	+107	+1.60	+9.9	+36
FL	Marb	RE	Fat	\$M	\$C	
+1.11	+0.44	+0.73	+0.036	+79	+220	



61

SRS LONG RUN 6238N

tattoo: 6238N birth: 01/26/25 reg: 21361168

ANGUS BULL

Square B Atlantis 8060
SRS Long Run 7231L
 SRS Joyce 2208Z

S A V Rainfall 6846#
 Elbanna of Conanga 1209
 Tombstone 050#
 Basin Joyce S474#

HF Bank Roll 84B

HF Smokin' Aces 105Y
 HF Miss Lucy 268Z

SRS Evergreen 6238D

Ox Bow Eisa Evergreen 226#
 N Bar Emulation EXT#
 Ox Bow Eisa Evergreen 009

Birth Weight	89
205 Weight	726
Weaning Rat	105
Sire Avg BW	21@89
Dam Avg BW	8@83
Dam WN Prod	8@99

Angus Association EPDs						
CED	BW	WW	YW	SC	HP	Milk
+5	+1.8	+67	+109	+73	+11.3	+34
FL	Marb	RE	Fat	\$M	\$C	
+1.15	-.06	+77	-.031	+91	+231	



REFERENCE SIRE

SRS Lion 1115L

• An attractive bull that is level-designed and square-made



MATERNAL BROTHER

SRS Historic 6238L, Maternal Brother to Lot 61

62

SRS LION 7238N

tattoo: 7238N birth: 02/03/25 reg: 21361174

ANGUS BULL

SRS Jackson 487J
SRS Lion 1115L
 SRS Rose 1115J

Coleman Bravo 6313#
 Pine Coulee Black Annie B87
 S A V Downpour 8794
 SRS Rose 2256Z

Vision Unanimous 1418#

Visiontopline Royal Stockman
 Vision Edella 665#

SRS Pride 7238E

SRS Pride 2211Z

Sitz Uncommon#
 Vermilion K Pride 8300

Birth Weight	101
205 Weight	711
Weaning Rat	103
Sire Avg BW	18@90
Dam Avg BW	7@85
Dam WN Prod	7@99

Angus Association EPDs						
CED	BW	WW	YW	SC	HP	Milk
+0	+3.8	+71	+119	+1.23	+14.3	+21
FL	Marb	RE	Fat	\$M	\$C	
+1.08	+92	+04	+005	+81	+274	



- A long, deep made bull
- His sire SRS Lion is a thick made bull that has a lot of internal dimension and depth of body

63

SRS LION 1108N

tattoo: 1108N birth: 02/20/25 reg: 21360986

ANGUS BULL

SRS Jackson 487J
SRS Lion 1115L
 SRS Rose 1115J

Coleman Bravo 6313#
 Pine Coulee Black Annie B87
 S A V Downpour 8794
 SRS Rose 2256Z

Musgrave Feature

Musgrave Sky High 1535#
 Musgrave Pride 1416-166

SRS Evergreen 1108J

SRS Evergreen 3236a#

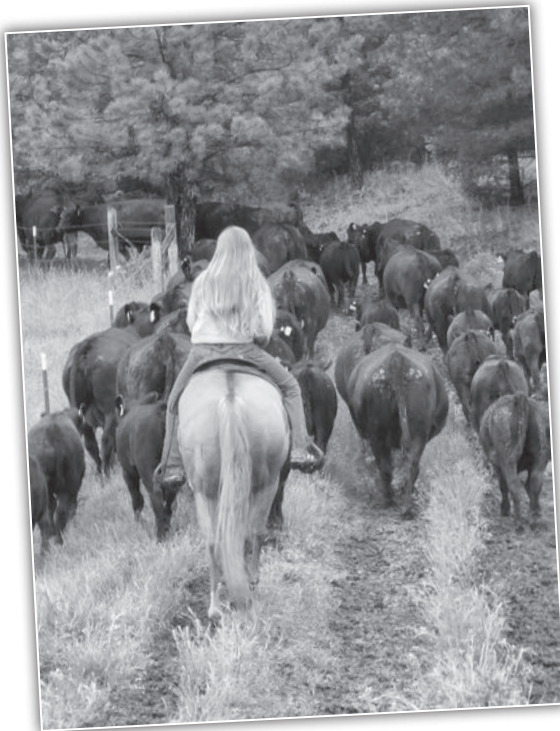
S R S Yukon 9133Y
 S R S Evergreen 0107X

Birth Weight	95
205 Weight	763
Weaning Rat	110
Sire Avg BW	18@90
Dam Avg BW	3@79
Dam WN Prod	3@99

Angus Association EPDs						
CED	BW	WW	YW	SC	HP	Milk
-2	+4.4	+82	+148	+74	+13.7	+23
FL	Marb	RE	Fat	\$M	\$C	
+1.04	+13	+56	+096	+62	+229	



- Eye-appealing bull that has great length and big performance



64

SRS LAWMAN 8229N

tattoo: 8229N birth: 02/15/25 reg: 21366475

ANGUS BULL

Millars Duke 816
SRS Lawman 7154L
 SRS Blossom 4244B

B Bar Windy 7 3575
 Millars Queen Lass 5273#
 Musgrave Foundation#
 SRS Joyce 2208Z

Connealy Big Time 1251 7743

Connealy Consensus#
 Breta of Conanga 525#

SRS Lass 8229F

S R S Lass 8159U#

S R S Strategy 607S
 S R S Mentor's Lass 5104R

Birth Weight	82
205 Weight	723
Weaning Rat	104
Sire Avg BW	16@83
Dam Avg BW	6@85
Dam WN Prod	6@100

Angus Association EPDs						
CED	BW	WW	YW	SC	HP	Milk
+1	+1.4	+68	+109	+76	+10.9	+34
FL	Marb	RE	Fat	\$M	\$C	
+1.03	+14	+37	+007	+74	+193	



65**SRS KEYNOTE 1146N**

tattoo: 0286N birth: 01/26/25 reg: 21360968

ANGUS BULLReich Ripper 37B
SRS Keynote 1047K
SRS Rose 2256ZDMM Riptide 2Z
Reich Pride 68Z
Tombstone 050#
S R S Rose 6148S#

S A V Renown 3439#

SRS Rose 1146J

S R S Rose 0119X

Rito 707 of Ideal 3407 7075
S A V Blackcap May 4136
S R S Trademark 732T
S R S Rose 6146S

Birth Weight	92
205 Weight	726
Weaning Rat	105
Sire Avg BW	58@80
Dam Avg BW	3@81
Dam WN Prod	3@92

Angus Association EPDs						
CED	BW	WW	YW	SC	HP	Milk
-1	+1.7	+47	+88	+1.41	+12.6	+37
FL	Marb	RE	Fat	\$M	\$C	
+1.12	+0.05	+0.52	-.003	+75	+180	

**REFERENCE SIRE**

Tehama Patriarch F028

- A moderate soft-made bull that is level in his make-up
- Dam is another really nice Renown daughter

**MATERNAL BROTHER**

SRS Chief 1146M, Maternal Brother to Lot 65

66**SRS PATRIARCH 5281N**

tattoo: 5281N birth: 01/21/25 reg: 21361495

ANGUS BULLS S Niagara Z29#
Tehama Patriarch F028#

Hoover Dam#

Jet S S X144

Tehama Elite Blackbird D826

Connealy Thunder#

Tehama Elite Blackbird Z630

Connealy Black Granite#

Connealy Consensus 7229#

Eura Elga of Conanga 9109#

SRS Rose 5281C#

S R S Rose 6146S

S A V 004 Density 4336#

Vermilion Rose 7566#

Birth Weight	87
205 Weight	732
Weaning Rat	106
Sire Avg BW	18@74
Dam Avg BW	9@88
Dam WN Prod	9@105

Angus Association EPDs						
CED	BW	WW	YW	SC	HP	Milk
+10	+1.5	+75	+135	+1.16	+13.0	+35
FL	Marb	RE	Fat	\$M	\$C	
+1.13	+0.60	+0.66	+0.054	+83	+285	

**Heifer Bull Potential**

- Bigger outlined bull with exceptional length

**MATERNAL BROTHER**

SRS Jackson 5281L, Maternal Brother to Lot 66

67**SRS PATRIARCH 8245N**

tattoo: 8245N birth: 01/17/25 reg: 21366473

ANGUS BULLS S Niagara Z29#
Tehama Patriarch F028#

Hoover Dam#

Jet S S X144

Tehama Elite Blackbird D826

Connealy Thunder#

Tehama Elite Blackbird Z630

HF Distinct 104D

HF Defender 146B

HF Echo 321Z

SRS Rose 8245F

SRS Rose 3234a

B P F Special Focus 504#

S R S Rose 1233Y

Birth Weight	83
205 Weight	772
Weaning Rat	112
Sire Avg BW	18@74
Dam Avg BW	5@88
Dam WN Prod	5@107

Angus Association EPDs						
CED	BW	WW	YW	SC	HP	Milk
+12	-1.4	+65	+111	+0.42	+14.7	+27
FL	Marb	RE	Fat	\$M	\$C	
+1.18	+0.80	+0.70	+0.033	+94	+274	

**Heifer Bull Potential**



68

SRS PATRIARCH 8222N

tattoo: 8232N birth: 01/28/25 reg: 21361349

ANGUS BULL

S S Niagara Z29# Hoover Dam#
 Tehama Patriarch F028# Jet S S X144
 Tehama Elite Blackbird D826 Connealy Thunder#
 Tehama Elite Blackbird Z630
 HA Cowboy Up 5405# HA Outside 3008
SRS Rose 8222F HA Blackcap Lady 1602#
 S R S Rose 7185T Connealy Onward#
 Vermilion Rose 7566#

Birth Weight	83
205 Weight	760
Weaning Rat	110
Sire Avg BW	18@74
Dam Avg BW	6@82
Dam WN Prod	5@105

Angus Association EPDs						
CED	BW	WW	YW	SC	HP	Milk
+8	+0.4	+75	+131	+85	+14.9	+31
FL	Marb	RE	Fat	\$M	\$C	
+1.15	+0.35	+0.55	+0.043	+64	+230	



Heifer Bull Potential

- A long-made bull out of a great cow



MATERNAL BROTHER

SRS Historic 8222L, Maternal Brother to Lot 68

69

SRS PATRIARCH 7275N

tattoo: 7275N birth: 01/19/25 reg: 21361489

ANGUS BULL

S S Niagara Z29# Hoover Dam#
 Tehama Patriarch F028# Jet S S X144
 Tehama Elite Blackbird D826 Connealy Thunder#
 Tehama Elite Blackbird Z630
 SRS Caliber 385C Soo Line Motive 9016#
SRS Pride 7275E S R S Rose 61485#
 SRS Pride 5247C# Mra Windy 3215
 SRS Pride 2244Z

Birth Weight	91
205 Weight	682
Weaning Rat	99
Sire Avg BW	18@74
Dam Avg BW	6@98
Dam WN Prod	6@100

Angus Association EPDs						
CED	BW	WW	YW	SC	HP	Milk
+3	+2.1	+79	+136	+1.27	+14.1	+27
FL	Marb	RE	Fat	\$M	\$C	
+1.07	+0.24	+0.61	-.006	+78	+241	



- Dam is a beautiful nine year old cow

TWO YEAR OLD BULLS

We have been offering some age-advantaged bulls for our customers and are extremely excited to offer another stout set of two-year olds that should go out and cover a large set of cows. These are not no-sales from our 2025 bull sale. This is all the bull calves born after March 1st from our 2025 set of bulls. It is also worth mentioning that we went in last fall and picked out all the bulls we thought were good enough quality to keep, we didn't keep poorer March calves just to feed up and make two-year olds. We did not offer them for sale to anyone, therefore these bulls have not been picked over. All of these bulls passed a semen test in the spring of 2025 as yearlings, they will again be tested this February before the sale. They ran in our unirrigated foothills from April 1st until the first of October. Buy with confidence that they are fertile and high-quality breeding bulls.



LOT 70

70

SRS DIRECTIVE 1240M

tattoo: 1240M birth: 03/12/24 reg: 21047858

ANGUS BULL

Sitz Resilient 10208 Sitz Stellar 726D#
SITZ Directive 720J Sitz Miss Burgess 1856
 Sitz Emma 26G Poss Achievement#
 Sitz Emma 86E

SRS Glacier 2256G LD Capitalist 316#
SRS Manor 1240J SRS Rose 2256Z
 SRS Manor 9248G Ellingson Homestead 6030#
 SRS Manor 3200a

Birth Weight	86
205 Weight	761
Weaning Rat	110
Sire Avg BW	67@81
Dam Avg BW	3@79
Dam WN Prod	3@98

Angus Association EPDs						
CED	BW	WW	YW	SC	HP	Milk
+5	+0.6	+75	+132	+1.12	+13.6	+23
FL	Marb	RE	Fat	\$M	\$C	
+1.15	+0.51	+0.18	+0.066	+71	+227	



- A stout, wide-topped bull that is correct in his lines
- Big performance bull
- Dam is an ideal young Angus female



71 **SRS RESILIENT 998M**
 tattoo: 998M birth: 03/20/24 reg: +21049313

ANGUS BULL
 Sitz Stellar 726D# Mohnen Substantial 272#
Sitz Resilient 10208 SITZ Pride 200B
 Sitz Miss Burgess 1856 Sitz Top Game 561X#
 Sitz Miss Burgess 4381
 Tombstone 050# Sitz Upward 307R#
SRS Rose 2256Z Mytty Countess 906
 S R S Rose 6148S# S A V 004 Density 4336#
 Vermilion Rose 7566#

Birth Weight	87
205 Weight	749
Weaning Rat	ET
Sire Avg BW	31@84
Dam Avg BW	8@85
Dam WN Prod	7@119

72 **SRS CHIEF 0221M**
 tattoo: 0221M birth: 03/21/24 reg: 21047621

ANGUS BULL
 Brooking National 0144 S A V Renovation 6822
Bar-E-L Chief 81K Soo Line Rose 1019
 Bar-E-L Naomi 27C Bar-E-L Natural Law 52Y
 Bar-E-L Naomi 83U

Musgrave Feature Musgrave Sky High 1535#
SRS Manor 0221H Musgrave Pride 1416-166
 SRS Manor 4221B Tombstone 050#
 Ox Bow Manor 443#

Birth Weight	85
205 Weight	740
Weaning Rat	107
Sire Avg BW	122@87
Dam Avg BW	2@80
Dam WN Prod	3@99

Angus Association EPDs						
CED	BW	WW	YW	SC	HP	Milk
+3	+1.1	+75	+135	+.48	+14.6	+39
FL	Marb	RE	Fat	\$M	\$C	
+1.12	+.70	+.51	+.008	+84	+268	

ANGUS GS
 Powered by Herdian Genetics
 VIDEO

Angus Association EPDs						
CED	BW	WW	YW	SC	HP	Milk
-3	+2.7	+58	+92	+1.03	+12.9	+25
FL	Marb	RE	Fat	\$M	\$C	
+1.15	+.70	+.64	+.079	+95	+269	

ANGUS GS
 Powered by Herdian Genetics
 VIDEO

- Extremely long, correct made bull with great shape and added eye appeal
- Donor dam is still working in the herd at 13 years of age

- A moderate, stout-designed bull that is massive topped
- A big 205 ratio on this bull
- Dam is a thick made cow with an excellent udder



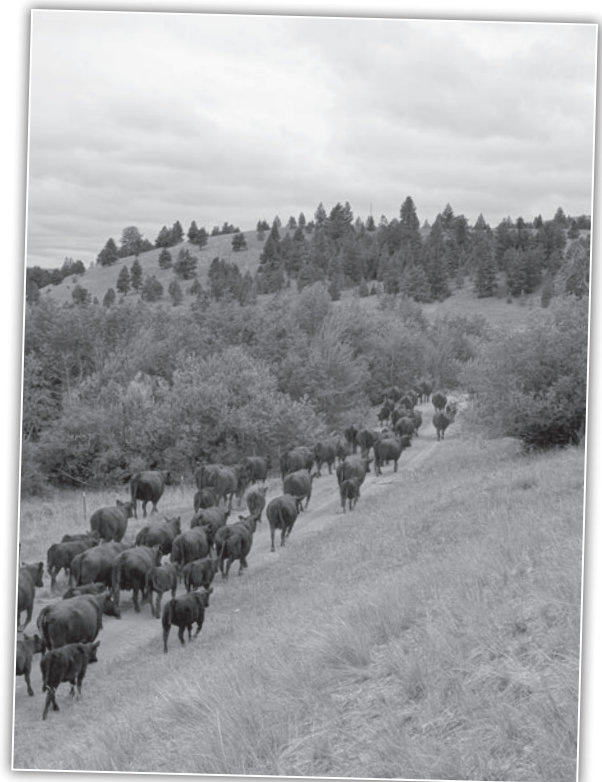
REFERENCE DAM

SRS Rose 2256Z, Dam of Lots 71, 74, 78 and 82



MATERNAL BROTHER

SRS Resilient 907L, Full Brother to Lot 71



Angus Two Year Old Bulls



SRS ROSE 2256Z

birth: 02/02/12

reg: 17308139

WWR 7@119

**2256Z
Progeny**

A front-end proven donor in our program that is a true breed changer. She is as long as you will find with a great udder and excellent feet. With over one hundred calves 2256 continues to put top end progeny in our herd at 14 years of age. She has produced numerous herd sires including SRS Blockbuster, SRS Glacier, SRS Jefferson, SRS Keynote, and SRS Stunner 1156j.

Dam of Lots 71, 74, 78, and 82





73 **SRS LEGITIMATE 994M**
 tattoo: 994M birth: 03/19/24 reg: +21050977

ANGUS BULL
 Myers Fair-N-Square M39
Deep Creek Legitimate 203
 Deep Creek Rain Lass 013

Soo Line Motive 9016#
SRS Rose 5220C
 S R S Rose 6148S#

Woodhill Blueprint#
 Myers Miss Beauty M136
 Basin Rainmaker 4404#
 Deep Creek MP Lass 933#

HF Kodiak 5R
 TLA Beauty 5R
 S A V 004 Density 4336#
 Vermilion Rose 7566#

Birth Weight	88
205 Weight	706
Weaning Rat	ET
Sire Avg BW	29@90
Dam Avg BW	8@85
Dam WN Prod	8@104

74 **SRS HONEST 9378M**
 tattoo: 9378M birth: 03/20/24 reg: +21048110

ANGUS BULL
 SRS Blockbuster 2256B
SRS Honest 3136H
 WK Blackbird 2224#

Soo Line Motive 9016#
 SRS Rose 2256Z
 Koupals B&B Identity#
 WK Blackbird 5066#

Tombstone 050#
SRS Rose 2256Z
 S R S Rose 6148S#

Sitz Upward 307R#
 Mytty Countess 906
 S A V 004 Density 4336#
 Vermilion Rose 7566#

Birth Weight	90
205 Weight	629
Weaning Rat	ET
Sire Avg BW	122@80
Dam Avg BW	8@85
Dam WN Prod	7@119

Angus Association EPDs						
CED	BW	WW	YW	SC	HP	Milk
+9	-0.5	+60	+102	+1.17	+14.2	+29
FL	Marb	RE	Fat	\$M	\$C	
+1.12	+0.46	+0.78	+0.007	+83	+256	

ANGUS GS
 Powered by iStock Genetics

VIDEO

Angus Association EPDs						
CED	BW	WW	YW	SC	HP	Milk
+3	+2.7	+74	+119	+0.37	+12.9	+23
FL	Marb	RE	Fat	\$M	\$C	
+1.07	+0.05	+0.89	-0.008	+84	+249	

ANGUS GS
 Powered by iStock Genetics

VIDEO

Heifer Bull Potential

- Stout ET bull that has tremendous length and lots of depth of rib
- We used this bull on our heifers last year
- The first few full sisters to this bull have been great, excellent feet and beautiful udders

- A moderate embryo bull that is hard to fault in his design
- Donor dam is still working in the herd at 14 years of age



REFERENCE DAM

SRS Rose 5220C, Dam of Lots 4, 5, 20, 23, 24, 50, 73



REFERENCE DAM

SRS Rose 2256Z, Dam of Lots 71, 74, 78 and 82



REFERENCE SIRE

Deep Creek Legitimate 203



FULL BROTHER

SRS Honest 2256, Full Brother to Lot 74



REFERENCE SIRE

Bar-E-L Chief 81K

77 SRS CHIEF 7218M tattoo: 7218M birth: 03/05/24 reg: 21047936

ANGUS BULL Brooking National 0144 Bar-E-L Chief 81K Bar-E-L Naomi 27C	S A V Renovation 6822 Soo Line Rose 1019 Bar-E-L Natural Law 52Y Bar-E-L Naomi 83U HA Cowboy Up 5405# SRS Rose 7218E S R S Rose 1244Y#	S A V Untouchable 8665 S R S Rose 7185T	Birth Weight 92 205 Weight 716 Weaning Rat 103 Sire Avg BW 122@87 Dam Avg BW 7@83 Dam WN Prod 7@96
--	---	--	---

Angus Association EPDs						
CED	BW	WW	YW	SC	HP	Milk
+3	+3.0	+71	+128	+1.01	+14.2	+29
FL	Marb	RE	Fat	\$M	\$C	
+1.07	+0.36	+0.62	+0.10	+61	+253	

- Long, thick-made bull



75 SRS CHIEF 0207M tattoo: 0207M birth: 04/07/24 reg: 21047587

ANGUS BULL Brooking National 0144 Bar-E-L Chief 81K Bar-E-L Naomi 27C	S A V Renovation 6822 Soo Line Rose 1019 Bar-E-L Natural Law 52Y Bar-E-L Naomi 83U Musgrave Feature SRS Tillie 0207H KR Tillie 3079	Musgrave Sky High 1535# Musgrave Pride 1416-166 Pine Ridge Hammer S322# WK Tillie 8467	Birth Weight 83 205 Weight 758 Weaning Rat 109 Sire Avg BW 122@87 Dam Avg BW 3@82 Dam WN Prod 3@104
--	--	---	--

Angus Association EPDs						
CED	BW	WW	YW	SC	HP	Milk
+0	+2.8	+64	+108	+0.60	+12.1	+26
FL	Marb	RE	Fat	\$M	\$C	
+1.05	+0.58	+0.58	+0.027	+53	+205	

- A high performance bull with exceptional length
- Dam is a beautiful Feature daughter that has a great udder



LOT 76

78 SRS ATLANTIS 029M tattoo: 029M birth: 03/25/24 reg: +21048122

ANGUS BULL S A V Rainfall 6846# Square B Atlantis 8060 Elbanna of Conanga 1209	Coleman Charlo 0256# S A V Blackcap May 4136 Connealy Consensus# Elbasta of Conanga 9703 Tombstone 050# SRS Rose 2256Z S R S Rose 6148S#	S A V 004 Density 4336# Vermilion Rose 7566#	Birth Weight 89 205 Weight 627 Weaning Rat ET Sire Avg BW 71@86 Dam Avg BW 8@85 Dam WN Prod 7@119
---	---	---	--

Angus Association EPDs						
CED	BW	WW	YW	SC	HP	Milk
+2	+3.0	+62	+112	+1.00	+14.9	+31
FL	Marb	RE	Fat	\$M	\$C	
+0.97	+0.29	+0.79	+0.009	+76	+250	

- Long-designed, wide-topped bull that should produce excellent daughters



REFERENCE DAM

SRS Rose 2256Z, Dam of Lots 71, 74, 78 and 82

76 SRS CHIEF 7214M tattoo: 7214M birth: 03/08/24 reg: 21047935

ANGUS BULL Brooking National 0144 Bar-E-L Chief 81K Bar-E-L Naomi 27C	S A V Renovation 6822 Soo Line Rose 1019 Bar-E-L Natural Law 52Y Bar-E-L Naomi 83U HA Prime Cut 4493# SRS Joyce 7214E Basin Joyce S474#	Vermilion Sirloln HA Miss Blackcap 9127 Brooks Ext 792# Basin Joyce 2264	Birth Weight 88 205 Weight 669 Weaning Rat 97 Sire Avg BW 122@87 Dam Avg BW 7@82 Dam WN Prod 7@99
--	--	---	--

Angus Association EPDs						
CED	BW	WW	YW	SC	HP	Milk
+4	+1.5	+50	+78	+0.68	+10.2	+28
FL	Marb	RE	Fat	\$M	\$C	
+1.11	+0.35	+0.81	+0.000	+72	+239	

- A bull with a huge top and great width from stifle to stifle

79 SRS JACKSON 1139M tattoo: 1139M birth: 03/26/24 reg: 21047758

ANGUS BULL Coleman Bravo 6313# SRS Jackson 487J Pine Coulee Black Annie B87	Coleman Charlo 0256# Coleman Donna 714 Connealy Onward# War Hill Backbone Annie Musgrave Feature SRS Rose 1139J S R S Rose 1244Y#	Musgrave Sky High 1535# Musgrave Donna 714 S A V Untouchable 8665 S R S Rose 7185T	Birth Weight 87 205 Weight 733 Weaning Rat 106 Sire Avg BW 121@82 Dam Avg BW 3@87 Dam WN Prod 3@101
--	--	---	--

Angus Association EPDs						
CED	BW	WW	YW	SC	HP	Milk
+5	+2.1	+67	+119	+0.66	+12.7	+35
FL	Marb	RE	Fat	\$M	\$C	
+1.05	+0.13	+0.74	+0.011	+82	+244	



80**SRS CHIEF 5207M**

tattoo: 5207M birth: 03/22/24 reg: 21047893

ANGUS BULLBrooking National 0144
Bar-E-L Chief 81K
Bar-E-L Naomi 27CS A V Renovation 6822
Soo Line Rose 1019
Bar-E-L Natural Law 52Y
Bar-E-L Naomi 83U

Tombstone 050#

SRS Pride 5207C#

Vermilion Pride 8071

Sitz Upward 307R#
Mytty Countess 906
Leachman Right Time#
Vermilion Pride 6446#

Birth Weight	90
205 Weight	781
Weaning Rat	113
Sire Avg BW	122@87
Dam Avg BW	9@85
Dam WN Prod	9@110

Angus Association EPDs						
CED	BW	WW	YW	SC	HP	Milk
+4	+1.1	+59	+103	+1.15	+14.5	+29
FL	Marb	RE	Fat	\$M	\$C	
+1.11	+0.16	+0.43	+0.033	+64	+226	



- A big performance bull
- Dam is doing an excellent job and is still in the herd at 11 years of age

**MATERNAL BROTHER**

SRS Stellar 5207K, Maternal Brother to Lot 80

81**SRS KNOWHOW 1133M**

tattoo: 1133M birth: 03/09/24 reg: 21047745

ANGUS BULLSRS Glacier 2256G
SRS Knowhow 0261K
SRS Erica 0261HLD Capitalist 316#
SRS Rose 2256Z
Musgrave Feature
S R S Erica 7162T

SRS Blockbuster 2256B

SRS Blackbird 1133J

WK Blackbird 2224#

Soo Line Motive 9016#
SRS Rose 2256Z
Koupals B&B Identity#
WK Blackbird 5066

Birth Weight	76
205 Weight	672
Weaning Rat	97
Sire Avg BW	12@73
Dam Avg BW	3@72
Dam WN Prod	3@95

Angus Association EPDs						
CED	BW	WW	YW	SC	HP	Milk
+8	+0.7	+60	+110	+0.70	+13.1	+28
FL	Marb	RE	Fat	\$M	\$C	
+1.10	+0.42	-0.20	+0.074	+79	+226	



Heifer Bull Potential

82**SRS TORQUE 785M**

tattoo: 785M birth: 03/18/24 reg: +21050988

ANGUS BULLS A V 004 Density 4336#
Bruin Torque 5261#
Falcon Blackbird 6071S A V 8180 Traveler 004#
S A V May 7238
Connealy Dateline#
Vermilion Blackbird 5044#

Tombstone 050#

SRS Rose 2256Z

S R S Rose 6148S#

Sitz Upward 307R#
Mytty Countess 906
S A V 004 Density 4336#
Vermilion Rose 7566#

Birth Weight	91
205 Weight	714
Weaning Rat	ET
Sire Avg BW	32@86
Dam Avg BW	8@85
Dam WN Prod	7@119

Angus Association EPDs						
CED	BW	WW	YW	SC	HP	Milk
+1	+3.3	+72	+131	+0.54	+13.1	+33
FL	Marb	RE	Fat	\$M	\$C	
+1.20	+0.12	+0.66	+0.010	+72	+239	



- Long -made bull that was built to make incredible females

YEARLING BULLS**REFERENCE SIRE**

Bar-E-L Chief 81K

**LOT 83****83****SRS CHIEF 1153N**

tattoo: 1153N birth: 02/18/25 reg: 21361051

ANGUS BULLBrooking National 0144
Bar-E-L Chief 81K
Bar-E-L Naomi 27CS A V Renovation 6822
Soo Line Rose 1019
Bar-E-L Natural Law 52Y
Bar-E-L Naomi 83U

Musgrave 316 Stunner#

SRS Erica Annie 1153J

SRS Erica Annie 4262B

LD Capitalist 316#
MCATL Blackbird 831-1378#
Koupals B&B Identity#
H A R B Erica Annie 710

Birth Weight	89
205 Weight	676
Weaning Rat	98
Sire Avg BW	122@87
Dam Avg BW	3@89
Dam WN Prod	3@103

Angus Association EPDs						
CED	BW	WW	YW	SC	HP	Milk
+4	+1.2	+60	+104	+1.06	+11.5	+39
FL	Marb	RE	Fat	\$M	\$C	
+1.20	+0.61	+1.05	+0.055	+86	+288	



- A bull you will find in the pen as he is heavy-muscled, deep-ribbed with lots of presence
- A beautiful young cow that has an exceptional udder

84**SRS CHIEF 1114N**

tattoo: 1114N birth: 01/30/25 reg: 21361312

ANGUS BULLBrooking National 0144
Bar-E-L Chief 81K
Bar-E-L Naomi 27CS A V Renovation 6822
Soo Line Rose 1019
Bar-E-L Natural Law 52Y
Bar-E-L Naomi 83U

S A V Downpour 8794

SRS Rose 1114J

SRS Rose 2256Z

S A V Rainfall 6846#
S A V Madame Pride 4407#
Tombstone 050#
S R S Rose 6148S#

Birth Weight	94
205 Weight	646
Weaning Rat	93
Sire Avg BW	122@87
Dam Avg BW	3@85
Dam WN Prod	3@99

Angus Association EPDs						
CED	BW	WW	YW	SC	HP	Milk
-3	+4.1	+57	+101	+0.96	+11.4	+30
FL	Marb	RE	Fat	\$M	\$C	
+1.04	+0.52	+0.67	+0.045	+61	+239	



- A deep, stylish calf

85

SRS CHIEF 2199N

tattoo: 2199N birth: 02/06/25 reg: 21361094

ANGUS BULL

Brooking National 0144
Bar-E-L Chief 81K
 Bar-E-L Naomi 27C

SRS Historic 2208H
SRS Erica 2199
 SRS Erica 7246E

S A V Renovation 6822
 Soo Line Rose 1019
 Bar-E-L Natural Law 52Y
 Bar-E-L Naomi 83U
 Hoover No Doubt#
 SRS Joyce 2208Z
 SRS Balance 0609B
 SRS Erica 2295Z

Birth Weight	83
205 Weight	679
Weaning Rat	98
Sire Avg BW	122@87
Dam Avg BW	2@78
Dam WN Prod	2@99

Angus Association EPDs						
CED	BW	WW	YW	SC	HP	Milk
-2	+2.6	+63	+109	+0.03	+13.3	+30
FL	Marb	RE	Fat	\$M	\$C	
+1.10	+0.64	+0.24	+0.067	+81	+259	



• A bull that is correct in his lines



88

SRS PATRIARCH 3105N

tattoo: 3105N birth: 01/27/25 reg: 21361364

ANGUS BULL

S S Niagara Z29#
Tehama Patriarch F028#
 Tehama Elite Blackbird D826

Hoover Dam#
 Jet S X144
 Connealy Thunder#
 Tehama Elite Blackbird Z630
 Square B Atlantis 8060
SRS Joyce 3105
 SRS Joyce 2208Z

S A V Rainfall 6846#
 Elbanna of Conanga 1209
 Tombstone 050#
 Basin Joyce S474#

Birth Weight	65
205 Weight	639
Weaning Rat	91
Sire Avg BW	18@74
Dam Avg BW	1@65
Dam WN Prod	1@91

Angus Association EPDs						
CED	BW	WW	YW	SC	HP	Milk
+7	+0.0	+77	+135	+1.08	+14.0	+21
FL	Marb	RE	Fat	\$M	\$C	
+1.11	+1.28	+0.89	+0.017	+71	+315	



Heifer Bull Potential

- A good-patterned bull
- Dam is a great uddered young cow

89

SRS LEVERAGE 0268N

tattoo: 0268N birth: 02/13/25 reg: 21360957

ANGUS BULL

Square B Atlantis 8060
SRS Leverage 4208L
 SRS Pride 4208B

S A V Rainfall 6846#
 Elbanna of Conanga 1209
 Tombstone 050#
 Vermilion Pride 8071
 PGC Forge
SRS Rose 0268H
 SRS Rose 7261E

Connealy Capitalist 028#
 PGC Shoeshone Girl 4106#
 Vision Unanimous 1418#
 SRS Rose 4216B

Birth Weight	74
205 Weight	659
Weaning Rat	95
Sire Avg BW	8@78
Dam Avg BW	4@77
Dam WN Prod	4@101

Angus Association EPDs						
CED	BW	WW	YW	SC	HP	Milk
+8	+0.1	+65	+108	+0.81	+13.6	+28
FL	Marb	RE	Fat	\$M	\$C	
+1.09	+0.69	+0.59	+0.013	+92	+267	



Heifer Bull Potential

- Square and thick-made



86

SRS GLACIER 3157N

tattoo: 3157N birth: 02/02/25 reg: 21361116

ANGUS BULL

LD Capitalist 316#
SRS Glacier 2256G
 SRS Rose 2256Z

SITZ Directive 720J
SRS Joyce 3157
 SRS Joyce 2208Z

Connealy Capitalist 028#
 LD Dixie Erica 2053
 Tombstone 050#
 S R S Rose 6148S#
 Sitz Resilient 10208
 SITZ Emma 26G
 Tombstone 050#
 Basin Joyce S474#

Birth Weight	69
205 Weight	721
Weaning Rat	103
Sire Avg BW	94@75
Dam Avg BW	1@69
Dam WN Prod	1@103

Angus Association EPDs						
CED	BW	WW	YW	SC	HP	Milk
+2	+1.4	+70	+119	+0.24	+10.5	+19
FL	Marb	RE	Fat	\$M	\$C	
+1.12	+0.47	+0.46	+0.054	+79	+262	



- A moderate bull that has a lot of thickness and a square hip
- A moderate first calf heifer that weaned a big calf

87

SRS LOGICAL 3243N

tattoo: 3243N birth: 01/30/25 reg: 21361154

ANGUS BULL

SRS Historic 2208H
SRS Logical 5273L
 SITZ Blackbird 334

SRS Jackson 487J
SRS Blackbird 3243
 SRS Blackbird 1135J

Hoover No Doubt#
 SRS Joyce 2208Z
 Connealy Final Product#
 SITZ Blackbird 532#
 Coleman Bravo 6313#
 Pine Coulee Black Annie B87
 SRS Blockbuster 2256B
 WK Blackbird 2224#

Birth Weight	66
205 Weight	699
Weaning Rat	100
Sire Avg BW	43@74
Dam Avg BW	1@66
Dam WN Prod	1@100

Angus Association EPDs						
CED	BW	WW	YW	SC	HP	Milk
+12	-2.7	+48	+86	+1.64	+14.4	+28
FL	Marb	RE	Fat	\$M	\$C	
+1.16	+0.94	+0.32	+0.019	+108	+288	



Heifer Bull Potential

- A deep-ribbed, squared made bull that weaned well

90

SRS HONEST 1240N

tattoo: 1240N birth: 02/16/25 reg: 21361072

ANGUS BULL

SRS Blockbuster 2256B
SRS Honest 3136H
 WK Blackbird 2224#

SRS Glacier 2256G
SRS Manor 1240J
 SRS Manor 9248G

Soo Line Motive 9016#
 SRS Rose 2256Z
 Koupals B&B Identity#
 WK Blackbird 5066
 LD Capitalist 316#
 SRS Rose 2256Z
 Ellingson Homestead 6030#
 SRS Manor 3200a

Birth Weight	80
205 Weight	645
Weaning Rat	93
Sire Avg BW	122@80
Dam Avg BW	3@79
Dam WN Prod	3@98

Angus Association EPDs						
CED	BW	WW	YW	SC	HP	Milk
+10	+0.0	+54	+102	+1.13	+14.3	+27
FL	Marb	RE	Fat	\$M	\$C	
+1.20	+0.24	+0.45	+0.012	+85	+216	



Heifer Bull Potential

- A big-middled bull that is level-made



REFERENCE SIRE

SRS Honest 3136H



REFERENCE SIRE

SRS Keynote 1047K

91 **SRS HONEST 9233N**
 tattoo: 9233N birth: 01/20/25 reg: 21361215

ANGUS BULL
 SRS Blockbuster 2256B Soo Line Motive 9016#
SRS Honest 3136H SRS Rose 2256Z
 WK Blackbird 2224# Koupals B&B Identity#
 WK Blackbird 5066

SRS Empire 1047E HA Prime Cut 4493#
SRS Pride 9233G Basin Joyce 5474#
 SRS Pride 2213Z Sitz Uncommon#
 Vermilion K Pride 8300

Birth Weight	88
205 Weight	688
Weaning Rat	99
Sire Avg BW	122@80
Dam Avg BW	5@81
Dam WN Prod	5@94

Angus Association EPDs						
CED	BW	WW	YW	SC	HP	Milk
+1	+1.7	+64	+109	+75	+9.5	+26
FL	Marb	RE	Fat	\$M	\$C	
+1.17	+0.45	+0.59	-0.026	+86	+230	

ANGUSGS
Powered by Neogen Genescreen
VIDEO

- A bull with extra extension in his front one third and great thickness
- Dam is a beautiful Angus female with a great udder

94 **SRS KEYNOTE 3185N**
 tattoo: 3185N birth: 01/13/25 reg: 21361127

ANGUS BULL
 Reich Ripper 37B DMM Riptide 2Z
SRS Keynote 1047K Reich Pride 68Z
 SRS Rose 2256Z Tombstone 050#
 S R S Rose 6148S#

Bruin Torque 5261# S A V 004 Density 4336#
SRS Kathy 3185 Falcon Blackbird 6071
 SRS Kathy 8208F Tombstone 050#
 S R S Kathy 0394N#

Birth Weight	77
205 Weight	714
Weaning Rat	102
Sire Avg BW	58@80
Dam Avg BW	1@77
Dam WN Prod	1@102

Angus Association EPDs						
CED	BW	WW	YW	SC	HP	Milk
+6	+0.4	+59	+96	+97	+13.3	+35
FL	Marb	RE	Fat	\$M	\$C	
+1.06	+0.14	+0.68	-0.11	+93	+218	

ANGUSGS
Powered by Neogen Genescreen
VIDEO

- Smooth-patterned bull

92 **SRS HONEST 1147N**
 tattoo: 1147N birth: 02/10/25 reg: 21361045

ANGUS BULL
 SRS Blockbuster 2256B Soo Line Motive 9016#
SRS Honest 3136H SRS Rose 2256Z
 WK Blackbird 2224# Koupals B&B Identity#
 WK Blackbird 5066

S A V Renown 3439# Rito 707 of Ideal 3407 7075
SRS Rose 1147J S A V Blackcap May 4136
 S R S Rose 0119X S R S Trademark 732T
 S R S Rose 6146S

Birth Weight	87
205 Weight	666
Weaning Rat	96
Sire Avg BW	122@80
Dam Avg BW	3@80
Dam WN Prod	2@96

Angus Association EPDs						
CED	BW	WW	YW	SC	HP	Milk
+9	-0.3	+58	+100	+98	+12.2	+22
FL	Marb	RE	Fat	\$M	\$C	
+1.25	+0.12	+1.08	+0.061	+96	+233	

ANGUSGS
Powered by Neogen Genescreen
VIDEO

Heifer Bull Potential



LOT 95

93 **SRS HONEST 3237N**
 tattoo: 3237N birth: 01/25/25 reg: 21361148

ANGUS BULL
 SRS Blockbuster 2256B Soo Line Motive 9016#
SRS Honest 3136H SRS Rose 2256Z
 WK Blackbird 2224# Koupals B&B Identity#
 WK Blackbird 5066

Musgrave Feature Musgrave Sky High 1535#
SRS Blanche 3237 Musgrave Pride 1416-166
 SRS Blanche 1127) S A V Downpour 8794
 SRS Blanche 4226B#

Birth Weight	69
205 Weight	723
Weaning Rat	103
Sire Avg BW	122@80
Dam Avg BW	1@69
Dam WN Prod	1@103

Angus Association EPDs						
CED	BW	WW	YW	SC	HP	Milk
+8	-0.3	+59	+96	+61	+11.3	+28
FL	Marb	RE	Fat	\$M	\$C	
+1.18	+0.29	+0.41	+0.029	+93	+229	

ANGUSGS
Powered by Neogen Genescreen
VIDEO

Heifer Bull Potential

- A moderate bull with lots of muscle dimension

95 **SRS KEYNOTE 3103N**
 tattoo: 3103N birth: 02/02/25 reg: 21361099

ANGUS BULL
 Reich Ripper 37B DMM Riptide 2Z
SRS Keynote 1047K Reich Pride 68Z
 SRS Rose 2256Z Tombstone 050#
 S R S Rose 6148S#

Square B Atlantis 8060 S A V Rainfall 6846#
SRS Joyce 3103 Elbanna of Conanga 1209
 SRS Joyce 2208Z Tombstone 050#
 Basin Joyce 5474#

Birth Weight	80
205 Weight	691
Weaning Rat	99
Sire Avg BW	58@80
Dam Avg BW	1@80
Dam WN Prod	1@99

Angus Association EPDs						
CED	BW	WW	YW	SC	HP	Milk
-6	+4.4	+70	+116	+1.02	+10.6	+38
FL	Marb	RE	Fat	\$M	\$C	
+1.01	+0.62	+0.84	+0.10	+67	+243	

ANGUSGS
Powered by Neogen Genescreen
VIDEO

- A very big-topped, thick-ended bull
- Dam is an excellent young cow with a great udder

96

SRS RENOVATION 515N

tattoo: 515N birth: 02/19/25 reg: +21361237

ANGUS BULL

S A V Renown 3439# Rito 707 of Ideal 3407 7075
 S A V Renovation 6822 S A V Blackcap May 4136
 S A V Madame Pride 0151 S A V 004 Density 4336#
 S A V Madame Pride 0075
 Coleman Juneau 044# O C C Juneau 807J#
 Coleman Donna 6317# Coleman Donna 714
 Coleman Donna 801 N Bar Emulation EXT#
 KMK Donna J311

Birth Weight	99
205 Weight	733
Weaning Rat	ET
Sire Avg BW	13@90
Dam Avg BW	7@74
Dam WN Prod	7@105

Angus Association EPDs						
CED	BW	WW	YW	SC	HP	Milk
-4	+5.4	+75	+131	+1.65	+12.3	+25
FL	Marb	RE	Fat	\$M	\$C	
+1.06	+0.19	+0.46	+0.024	+50	+187	



LOT 98

- A bull that could have easily been earlier in the sale
- Thick, deep and square
- He should produce exceptional daughters



REFERENCE DAM

Coleman Donna 6317, Dam of Lots 18, 29 and 96

97

SRS LOGICAL 3222N

tattoo: 3222N birth: 01/29/25 reg: 21361139

ANGUS BULL

SRS Historic 2208H Hoover No Doubt#
 SRS Joyce 2208Z
 SRS Logical 5273L Connealy Final Product#
 SITZ Blackbird 334 SITZ Blackbird 532#
 SITZ Directive 720J Sitz Resilient 10208
 SRS Annie 3222 SITZ Emma 26G
 SRS Black Annie 0276H Musgrave Feature
 Pine Coulee Black Annie E55

Birth Weight	65
205 Weight	702
Weaning Rat	100
Sire Avg BW	43@74
Dam Avg BW	1@65
Dam WN Prod	1@100

Angus Association EPDs						
CED	BW	WW	YW	SC	HP	Milk
+10	-0.2	+67	+121	-.17	+12.3	+25
FL	Marb	RE	Fat	\$M	\$C	
+1.14	+0.90	+0.67	+0.009	+95	+303	



Heifer Bull Potential

- A moderate bull that has a great pattern and depth of body



REFERENCE SIRE

SRS Logical 5273L

98

SRS LOGICAL 3123N

tattoo: 3123N birth: 01/16/25 reg: 21361107

ANGUS BULL

SRS Historic 2208H Hoover No Doubt#
 SRS Joyce 2208Z
 SRS Logical 5273L Connealy Final Product#
 SITZ Blackbird 334 SITZ Blackbird 532#
 Sitz Resilient 10208 Sitz Stellar 726D#
 SRS Tillie 3123 Sitz Miss Burgess 1856
 KR Tillie 3079 Pine Ridge Hammer S322#
 WK Tillie 8467

Birth Weight	66
205 Weight	719
Weaning Rat	103
Sire Avg BW	43@74
Dam Avg BW	1@66
Dam WN Prod	1@103

Angus Association EPDs						
CED	BW	WW	YW	SC	HP	Milk
+6	-0.6	+63	+109	+0.92	+11.5	+29
FL	Marb	RE	Fat	\$M	\$C	
+1.09	+1.02	+0.51	+0.027	+76	+255	



- A nice-fronted bull with extra depth of body

99

SRS LOGICAL 3122N

tattoo: 3122N birth: 02/05/25 reg: 21361105

ANGUS BULL

SRS Historic 2208H Hoover No Doubt#
 SRS Joyce 2208Z
 SRS Logical 5273L Connealy Final Product#
 SITZ Blackbird 334 SITZ Blackbird 532#
 Sitz Resilient 10208 Sitz Stellar 726D#
 SRS Rose 3122 Sitz Miss Burgess 1856
 SRS Rose 2277Z# Tombstone 050#
 S R S Rose 0119X

Birth Weight	65
205 Weight	677
Weaning Rat	97
Sire Avg BW	43@74
Dam Avg BW	1@65
Dam WN Prod	1@97

Angus Association EPDs						
CED	BW	WW	YW	SC	HP	Milk
+11	-1.1	+62	+108	+0.31	+15.3	+29
FL	Marb	RE	Fat	\$M	\$C	
+1.17	+1.51	+0.44	+0.009	+84	+316	



Heifer Bull Potential

- Long, level-designed bull

100

SRS LOGICAL 3176N

tattoo: 3176N birth: 02/11/25 reg: 21361120

ANGUS BULL

SRS Historic 2208H Hoover No Doubt#
 SRS Joyce 2208Z
 SRS Logical 5273L Connealy Final Product#
 SITZ Blackbird 334 SITZ Blackbird 532#
 SITZ Intent 742J Sitz Thunderball 734E
 SRS Lass 3176 SITZ Pride 200B
 SRS Lass 6241D# SRS Accolade 0336a
 SRS Lass 3207a

Birth Weight	67
205 Weight	676
Weaning Rat	97
Sire Avg BW	43@74
Dam Avg BW	1@67
Dam WN Prod	1@97

Angus Association EPDs						
CED	BW	WW	YW	SC	HP	Milk
+12	-1.7	+44	+84	+1.47	+15.3	+30
FL	Marb	RE	Fat	\$M	\$C	
+1.15	+0.96	+0.38	+0.041	+102	+295	



Heifer Bull Potential

101**SRS LOGICAL 8224N**

tattoo: 8224N birth: 02/02/25 reg: 21361182

ANGUS BULLSRS Historic 2208H
SRS Logical 5273L
SITZ Blackbird 334Hoover No Doubt#
SRS Joyce 2208Z
Connealy Final Product#
SITZ Blackbird 532#
Tombstone 050#
Ox Bow Manor 443#
Sitz Tradition RLS 8702#
Ox Bow Barbaramere Jet 5129#

Birth Weight	85
205 Weight	653
Weaning Rat	94
Sire Avg BW	43@74
Dam Avg BW	6@89
Dam WN Prod	6@100

Angus Association EPDs						
CED	BW	WW	YW	SC	HP	Milk
+9	+0.1	+42	+76	+1.8	+13.8	+23
FL	Marb	RE	Fat	\$M	\$C	
+1.05	+0.57	+0.77	+0.001	+72	+243	

**Heifer Bull Potential**

- Dam is a moderate, beautifully-designed cow

104**SRS FAIR-N-SQUARE 2189N**

tattoo: 2189N birth: 01/30/25 reg: 21361089

ANGUS BULLWoodhill Blueprint#
Myers Fair-N-Square M39
Myers Miss Beauty M136Connealy Confidence Plus#
Woodhill Evergreen Z291-B233
Connealy Thunder#
Myers Miss Beauty M476#
S A V Rainfall 6846#
Elbanna of Conanga 1209
SRS Accolade 0336a
SRS Lass 3207a

Birth Weight	81
205 Weight	668
Weaning Rat	97
Sire Avg BW	42@87
Dam Avg BW	2@74
Dam WN Prod	2@87

Angus Association EPDs						
CED	BW	WW	YW	SC	HP	Milk
+1	+2.4	+90	+149	+1.37	+13.4	+25
FL	Marb	RE	Fat	\$M	\$C	
+1.07	+0.40	+0.73	+0.019	+70	+245	



REFERENCE SIRE

SRS Lion 1115L

**LOTS 102-103
FLUSH BROTHERS****102****SRS LOGICAL 1321N**

tattoo: 1321N birth: 02/06/25 reg: +21361234

ANGUS BULLSRS Historic 2208H
SRS Logical 5273L
SITZ Blackbird 334Hoover No Doubt#
SRS Joyce 2208Z
Connealy Final Product#
SITZ Blackbird 532#
S Chisum 6175#
Basin Joyce S474#
Tombstone 050#
S R S Lass 0589R

Birth Weight	80
205 Weight	693
Weaning Rat	ET
Sire Avg BW	43@74
Dam Avg BW	8@88
Dam WN Prod	8@106

Angus Association EPDs						
CED	BW	WW	YW	SC	HP	Milk
+6	+0.9	+53	+95	+1.23	+15.7	+31
FL	Marb	RE	Fat	\$M	\$C	
+1.18	+0.59	+0.44	-.015	+94	+247	

**Heifer Bull Potential****103****SRS LOGICAL 604N**

tattoo: 604N birth: 02/03/25 reg: +21361240

ANGUS BULLSire: **SRS Logical 5273L**
Dam: **SRS Lass 6241D#**

Birth Weight	80
205 Weight	630
Weaning Rat	ET

Angus Association EPDs						
CED	BW	WW	YW	SC	HP	Milk
+6	+0.0	+58	+100	+0.89	+13.3	+31
FL	Marb	RE	Fat	\$M	\$C	
+1.19	+0.30	+0.12	+0.016	+93	+225	

**Heifer Bull Potential****105****SRS LION 5218N**

tattoo: 5218N birth: 02/19/25 reg: 21361469

ANGUS BULLSRS Jackson 487J
SRS Lion 1115L
SRS Rose 1115JColeman Bravo 6313#
Pine Coulee Black Annie B87
S A V Downpour 8794
SRS Rose 2256Z
Tombstone 050#
Basin Joyce S474#
N Bar Emulation EXT#
Ox Bow Manor 918#

Birth Weight	77
205 Weight	692
Weaning Rat	100
Sire Avg BW	18@90
Dam Avg BW	9@81
Dam WN Prod	9@102

Angus Association EPDs						
CED	BW	WW	YW	SC	HP	Milk
+5	+1.9	+55	+90	+1.52	+9.2	+31
FL	Marb	RE	Fat	\$M	\$C	
+1.07	+0.35	+0.31	+0.009	+62	+159	



- Dam is a great 11 year old cow with a perfect udder



REFERENCE DAM

SRS Lass 6241D

Pathfinder Dam of Lots 53, 54, 55, 102, 103 and 107



106 SRS LION 1131N

tattoo: 1131N birth: 02/13/25 reg: 21361032

ANGUS BULL

SRS Jackson 487J
SRS Lion 1115L
SRS Rose 1115J

Coleman Bravo 6313#
Pine Coulee Black Annie B87
S A V Downpour 8794
SRS Rose 2256Z
Musgrave Sky High 1535#
Musgrave Pride 1416-166
Brooks Ext 792#
Basin Joyce 2264

Birth Weight	83
205 Weight	700
Weaning Rat	101
Sire Avg BW	18@90
Dam Avg BW	3@72
Dam WN Prod	3@99

Musgrave Feature
SRS Joyce 1131J
Basin Joyce S474#

Angus Association EPDs						
CED	BW	WW	YW	SC	HP	Milk
+5	+1.9	+71	+121	+96	+14.5	+18
FL	Marb	RE	Fat	\$M	\$C	
+0.99	+0.58	+0.53	-0.024	+68	+237	



MATERNAL BROTHER

SRS Glacier 1131L, Maternal Brother to Lot 106

108 SRS LONG RUN 7246N

tattoo: 7246N birth: 01/31/25 reg: 21361176

ANGUS BULL

Square B Atlantis 8060
SRS Long Run 7231L
SRS Joyce 2208Z

S A V Rainfall 6846#
Elbanna of Conanga 1209
Tombstone 050#
Basin Joyce S474#
Tombstone 050#
Ox Bow Manor 443#
S R S Xhibit 8071X
Basin Erica 343R#

Birth Weight	87
205 Weight	668
Weaning Rat	97
Sire Avg BW	21@89
Dam Avg BW	7@83
Dam WN Prod	7@99

SRS Balance 0609B
SRS Erica 7246E
SRS Erica 2295Z

Angus Association EPDs						
CED	BW	WW	YW	SC	HP	Milk
+3	+2.1	+59	+101	+1.75	+13.3	+29
FL	Marb	RE	Fat	\$M	\$C	
+1.14	+0.62	+0.02	+0.059	+81	+231	



MATERNAL BROTHER

SRS Empire 7246G, Maternal Brother to Lot 108

107 SRS LONG RUN 6241N

tattoo: 6241N birth: 02/16/25 reg: 21361169

ANGUS BULL

Square B Atlantis 8060
SRS Long Run 7231L
SRS Joyce 2208Z

S A V Rainfall 6846#
Elbanna of Conanga 1209
Tombstone 050#
Basin Joyce S474#
S Chisum 6175#
Basin Joyce S474#
Tombstone 050#
S R S Lass 0589R

Birth Weight	91
205 Weight	736
Weaning Rat	106
Sire Avg BW	21@89
Dam Avg BW	8@88
Dam WN Prod	8@106

SRS Accolade 0336a
SRS Lass 6241D#
SRS Lass 3207a

Angus Association EPDs						
CED	BW	WW	YW	SC	HP	Milk
-1	+3.0	+68	+105	+1.05	+10.8	+35
FL	Marb	RE	Fat	\$M	\$C	
+1.09	+0.18	+0.66	+0.013	+85	+221	



• Long-made bull with good performance



REFERENCE DAM

SRS Lass 6241D, Pathfinder Dam of Lot 107

109 SRS LAWMAN 1126N

tattoo: 1126N birth: 02/15/25 reg: 21361009

ANGUS BULL

Millars Duke 816
SRS Lawman 7154L
SRS Blossom 4244B

B Bar Windy 7 3575
Millars Queen Lass 5273#
Musgrave Foundation#
SRS Joyce 2208Z
S A V Downpour 8794
S A V Madame Pride 4407#
Musgrave Foundation#
S R S Blanche 0100X

Birth Weight	78
205 Weight	690
Weaning Rat	100
Sire Avg BW	16@83
Dam Avg BW	3@74
Dam WN Prod	3@94

S A V Downpour 8794
SRS Blanche 1126J
SRS Blanche 4226B#

Angus Association EPDs						
CED	BW	WW	YW	SC	HP	Milk
+10	-0.8	+61	+100	+1.55	+12.1	+40
FL	Marb	RE	Fat	\$M	\$C	
+1.16	+0.32	+0.94	+0.059	+92	+252	



Heifer Bull Potential





REFERENCE
SIRE

Bar-E-L Chief 81K

110 **SRS LAWMAN 1244N**
tattoo: 1244N birth: 02/11/25 reg: 21361074

ANGUS BULL
Millars Duke 816
SRS Lawman 7154L
SRS Blossom 4244B

Musgrave Feature
SRS Pride 1244J
SRS Pride 7241E

B Bar Windy 7 3575
Millars Queen Lass 5273#
Musgrave Foundation#
SRS Joyce 2208Z
Musgrave Sky High 1535#
Musgrave Pride 1416-166
SRS Blockbuster 2256B
SRS Pride 2230Z

Birth Weight	77
205 Weight	701
Weaning Rat	101
Sire Avg BW	16@83
Dam Avg BW	3@76
Dam WN Prod	3@96

112 **SRS CHIEF 0263N**
tattoo: 0263N birth: 01/31/25 reg: 21360950

ANGUS BULL
Brooking National 0144
Bar-E-L Chief 81K
Bar-E-L Naomi 27C

S A V Renovation 6822
Soo Line Rose 1019
Bar-E-L Natural Law 52Y
Bar-E-L Naomi 83U
MOGCK Entice#
SRS Barbaramere Jet 0263H
SRS Barbaramere Jet 7205E

SydGen Enhance#
MOGCK Erica 2255#
Connealy Big Time 1251 7743
Ox Bow Barbaramere Jet 842#

Birth Weight	100
205 Weight	644
Weaning Rat	93
Sire Avg BW	122@87
Dam Avg BW	4@83
Dam WN Prod	4@101

Angus Association EPDs						
CED	BW	WW	YW	SC	HP	Milk
+3	+0.5	+71	+118	+9.7	+11.2	+25
FL	Marb	RE	Fat	\$M	\$C	
+1.11	+45	+61	+0.39	+78	+235	

ANGUSGS
Powered by Neogen Genescope

Angus Association EPDs						
CED	BW	WW	YW	SC	HP	Milk
-2	+4.8	+63	+113	+7.9	+14.9	+25
FL	Marb	RE	Fat	\$M	\$C	
+9.2	+90	+76	+0.59	+55	+278	

ANGUSGS
Powered by Neogen Genescope

• Thick, square-made bull out of a cow with a perfect udder

• Thick and square-made

111 **SRS ATLANTIS 7203N**
tattoo: 7203N birth: 01/29/25 reg: 21361437

ANGUS BULL
S A V Rainfall 6846#
Square B Atlantis 8060
Elbanna of Conanga 1209

Vision Unanimous 1418#
SRS Kathy 7203E
S R S Kathy 7142T#

Coleman Charlo 0256#
S A V Blackcap May 4136
Connealy Consensus#
Elbasta of Conanga 9703
Visiontopline Royal Stockman
Vision Edella 665#
Connealy Onward#
S R S Kathy 0394N#

Birth Weight	103
205 Weight	719
Weaning Rat	104
Sire Avg BW	71@86
Dam Avg BW	7@87
Dam WN Prod	7@102

Angus Association EPDs						
CED	BW	WW	YW	SC	HP	Milk
-4	+3.3	+70	+118	+4.4	+11.7	+29
FL	Marb	RE	Fat	\$M	\$C	
+9.8	+48	+56	+0.42	+43	+228	

ANGUSGS
Powered by Neogen Genescope

• Deep-sided bull with good performance



MATERNAL
BROTHER

SRS Historic 0263M, Maternal Brother to Lot 112



MATERNAL
BROTHER

SRS Kickoff 7203M, Maternal Brother to Lot 111

113 **SRS CHIEF 2128N**
tattoo: 2128N birth: 02/05/25 reg: 21361082

ANGUS BULL
Brooking National 0144
Bar-E-L Chief 81K
Bar-E-L Naomi 27C

SRS Historic 2208H
SRS DC Lass 2128
Deep Creek Imp Lass 6101

S A V Renovation 6822
Soo Line Rose 1019
Bar-E-L Natural Law 52Y
Bar-E-L Naomi 83U
Hoover No Doubt#
SRS Joyce 2208Z
Connealy Impression 540C
Deep Creek RNR Lass 334

Birth Weight	90
205 Weight	646
Weaning Rat	93
Sire Avg BW	122@87
Dam Avg BW	2@82
Dam WN Prod	2@92

Angus Association EPDs						
CED	BW	WW	YW	SC	HP	Milk
-1	+2.7	+56	+106	+2.9	+11.6	+21
FL	Marb	RE	Fat	\$M	\$C	
+1.01	+70	+55	+0.27	+53	+245	

ANGUSGS
Powered by Neogen Genescope

114

SRS CHIEF 2240N

tattoo: 2240N birth: 02/07/25 reg: 21361097

ANGUS BULL

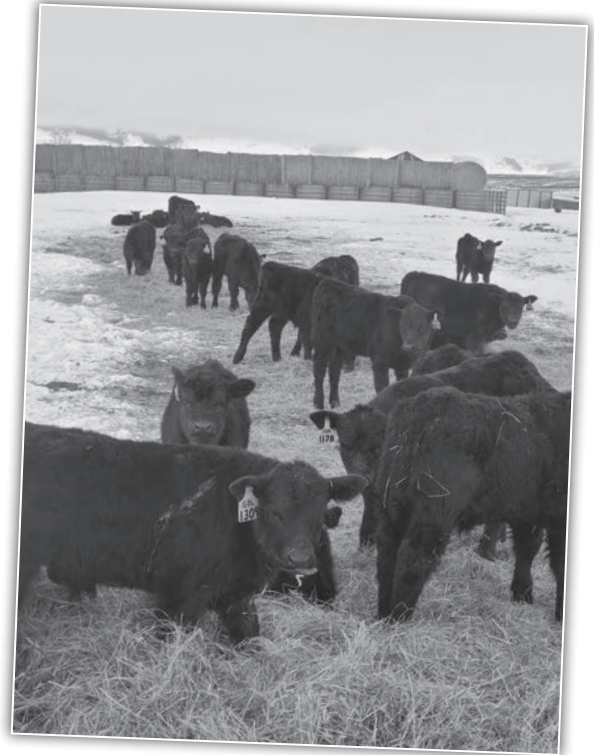
Brooking National 0144
Bar-E-L Chief 81K
 Bar-E-L Naomi 27C

S A V Renovation 6822
 Soo Line Rose 1019
 Bar-E-L Natural Law 52Y
 Bar-E-L Naomi 83U
 Mohren Substantial 272#
 SITZ Pride 200B
 Tombstone 050#
 S R S Kathy 0394N#

Birth Weight	77
205 Weight	656
Weaning Rat	95
Sire Avg BW	122@87
Dam Avg BW	2@75
Dam WN Prod	2@85

Sitz Stellar 726D#
SRS Kathy 2240
 SRS Kathy 8208F

Angus Association EPDs						
CED	BW	WW	YW	SC	HP	Milk
+0	+0.8	+63	+104	+65	+12.4	+30
FL	Marb	RE	Fat	\$M	\$C	
+1.12	+0.00	+0.98	+0.008	+80	+223	



115

SRS CHIEF 2139N

tattoo: 2139N birth: 02/01/25 reg: 21361086

ANGUS BULL

Brooking National 0144
Bar-E-L Chief 81K
 Bar-E-L Naomi 27C

S A V Renovation 6822
 Soo Line Rose 1019
 Bar-E-L Natural Law 52Y
 Bar-E-L Naomi 83U
 Musgrave Sky High 1535#
 Musgrave Pride 1416-166
 Tombstone 050#
 S R S Rose 0119X

Birth Weight	82
205 Weight	632
Weaning Rat	91
Sire Avg BW	122@87
Dam Avg BW	2@80
Dam WN Prod	2@86

Musgrave Feature
SRS Rose 2139
 SRS Rose 2277Z#

Angus Association EPDs						
CED	BW	WW	YW	SC	HP	Milk
+6	+1.3	+52	+90	+1.28	+11.0	+21
FL	Marb	RE	Fat	\$M	\$C	
+1.14	+0.50	+0.41	+0.037	+80	+225	



116

SRS KNOWHOW 3136N

tattoo: 3136N birth: 02/12/25 reg: 21361112

ANGUS BULL

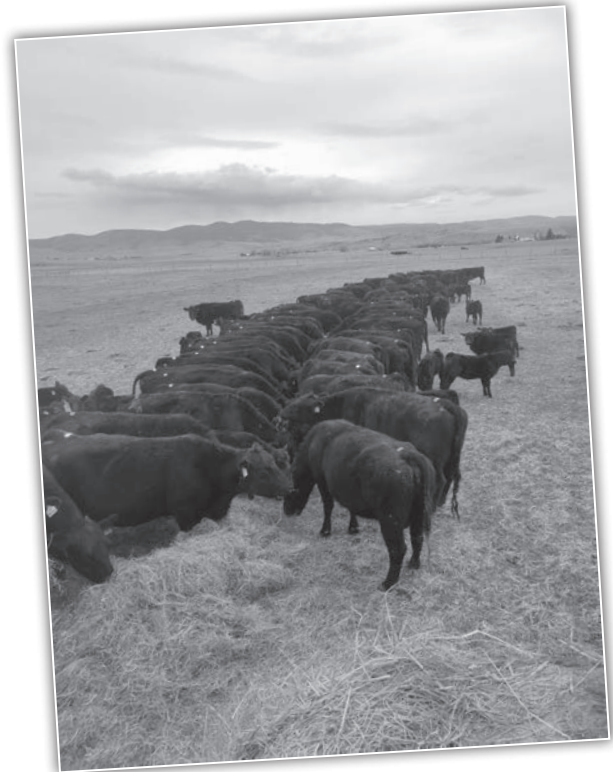
SRS Glacier 2256G
SRS Knowhow 0261K
 SRS Erica 0261H

LD Capitalist 316#
 SRS Rose 2256Z
 Musgrave Feature
 S R S Erica 7162T
 Musgrave 316 Stunner#
 SRS Rose 2277Z#
 Vision Unanimous 1418#
 SRS Pride 2211Z

Birth Weight	79
205 Weight	693
Weaning Rat	99
Sire Avg BW	12@73
Dam Avg BW	1@79
Dam WN Prod	1@99

SRS Headline 2277H
SRS Pride 3136
 SRS Pride 7238E

Angus Association EPDs						
CED	BW	WW	YW	SC	HP	Milk
+4	+1.9	+73	+119	+2.01	+14.9	+25
FL	Marb	RE	Fat	\$M	\$C	
+1.17	+0.31	+0.66	+0.004	+94	+278	





Driving the science of better breeding

There's little room for error in the cattle business. You need the most advanced information to make smart selection decisions, and Angus Genetics Inc. (AGI[®]) provides it through genomically-enhanced expected progeny differences (GE-EPDs). GE-EPDs have become the industry standard for herd improvement, building on decades of science-backed genetic evaluation tools originated and maintained through the American Angus Association[®], home to the largest and ever-growing single-breed beef cattle database.

EPDs that traditionally contained all pedigree, performance and progeny information now also include results from available genomic, or DNA, tests. Breeders who use genomic technology give buyers access to AGI-generated GE-EPDs that provide:

Increased predictability and decreased risk for young and unproven animals due to enhanced accuracy of EPDs

Better characterization of genetics for difficult-to-measure performance traits (such as carcass traits, maternal traits and feed efficiency)

The ability to make more rapid progress for traits that are important to you, due to:

- more accurate selection
- easier identification of genetic outliers
- the ability to propagate young animals with confidence earlier in their lives

Note: SRS Angus bulls were recommended as Heifer Bull Potential by genomically enhanced EPDs and pedigree history. The size, shape, and calving ability of your program should also be factored into your decision

In fact, GE-EPDs on unproven animals have the same level of accuracy as if they had recorded 9-33 calves, depending on the trait. That's valuable insight, offered regularly through the breed's weekly national cattle evaluation.

Trait	Progeny Equivalent	Trait	Progeny Equivalent
Calving Ease Direct	24	Heifer Pregnancy	28
Calving Ease Maternal	18	Maternal Milk	33
Birth Weight	22	Mature Weight	14
Weaning Weight	25	Mature Height	9
Yearling Weight	20	Carcass Weight	13
Yearling Height	15	Marbling Score	10
Dry Matter Intake	12	Ribeye Area	11
Scrotal Circumference	12	Backfat Thickness	11
Docility	10	Teat Size	12
Foot Claw Set	13	Udder Suspension	13
Foot Angle	12	Pulmonary Arterial Pressure	7
		Hair Shed Score	10

How do you know if EPDs are genomically-enhanced?

Ask your breeder, refer to the registration paper, or look for the AGI GE-EPD logo, Angus GS[™] powered by partner Neogen GeneSeek or the HD50K by partner Zoetis. These images indicate animals for which low-density or high-density genomic testing has been conducted and incorporated by AGI into GE-EPDs.



Angus.org/AGI

**REFERENCE
SIRE**

SRS LIFETIME 6111L

tattoo: 6111L birth: 2/19/23 reg 757926

ANGUS BULL

SRS BLOCKBUSTER 2256B SOO LINE MOTIVE 9016
 SRS ROSE 2256Z
SRS HONEST 3136H KROUPALS B&B IDENTITY
 WK BLACKBIRD 2224 WK BLACKBIRD 5066
 SRS BULLSEYE 592B SOO LINE MOTIVE 9016
SRS STARR 6111D SRS JULIET 0584R
 SRS STARR 0653S SRS POLICY 9336
 SRS LYNN 0151L

American Salers EPDs										
CED	BW	WW	YW	MWW	Milk	Marb	Carcass	REA	Fat	
+13.4	-1.6	+55	+84	+42	+15	+0.1	+15.9	+3.8	-.03	



SRS LIFETIME 6111L

A standout bull from birth that sold in our sale two years ago. Lifetime was incredible in his muscle shape and pattern. His progeny follow in his footsteps as they have the same great look to them. His dam is a long-made cow with a good udder. Very impressive sire group.

**REFERENCE
SIRE**

SRS KEYSTONE 5132

tattoo: 5132 birth: 1/26/22 reg 753301

ANGUS BULL

SRS DYNASTY 667D CONNEALY GREELEY
 SRS FINICKY 0838U
SRS GENERAL 4180G SRS GUNSLINGER 605Z
 SRS JULIET 0218M
 SRS GUNSLINGER 605Z TOMBSTONE 050
 BASIN JOYCE S474
SRS JULIET 5132C SRS CHEYENNE 9529M
 SRS JULIET 0522R SRS JULIET 9026Z

American Salers EPDs										
CED	BW	WW	YW	MWW	Milk	Marb	Carcass	REA	Fat	
+5.0	+2.6	+59	+87	+46	+17	+0.1	+28.4	+5.6	-.04	



SRS KEYSTONE 5132

A long-made, level-designed bull that was a twin. His dam is a 11 year-old proven cow that has a lot of performance and a beautiful udder. The calves have a lot of eye appeal and length to them.

Optimizer Reference Sires





117 **SRS LIFETIME 1331N**
 tattoo: SRS1331N birth: 1/29/2025 reg #: P769839
OPTIMIZER BULL

SRS HONEST 3136H	SRS BLOCKBUSTER 2256B	Birth Weight	74
SRS LIFETIME 6111L	WK BLACKBIRD 2224	205 Weight	798
SRS STARR 6111D	SRS BULLSEYE 592B	Weaning Rat	108
	*SRS STARR 0653S	Sire Avg BW	19@80
SRS GENERAL 4180G	SRS DYNASTY 667D	Dam Avg BW	3@80
SRS AURA 1331J	SRS JULIET 4180B	Dam WN Prod	3@103
SRS AURA 7154E	SRS BATTALION 0984B		
	SRS AURA 0933W		

American Sellers EPDs									
CED	BW	WW	YW	MWW	Milk	Marb	Carcass	REA	Fat
+19.0	-3.1	+65	+99	+54	+21	+2	+37.1	+55	-.01

POLLED 5/8 AN 3/8 SA HOMOZYGOUS BLACK

Heifer Bull Potential
 • An impressive bull that is long, thick and deep with incredible presence *Dam is an outstanding female with a good udder



SRS Lifetime 6111L

Scan the QR code with your phone camera to go directly to that bull's video, or view on www.NorthernLivestockVideo.com and www.SkinnerRanch.com



Optimizer Bulls



118 **SRS LIFETIME 5184N**
 tattoo: SRS 5184N birth: 2/2/2025 reg #: P769834

OPTIMIZER BULL

SRS HONEST 3136H
SRS LIFETIME 6111L
 SRS STARR 6111D

SRS YAKIMA 9118YY
***SRS SUZETTE 5184C**
 SRS SUZETTE 3160A

SRS BLOCKBUSTER 2256B
 WK BLACKBIRD 2224
 SRS BULLSEYE 592B
 *SRS STARR 0653S
 SRS UNREAL 0151U
 *SRS LACE 9118W
 SRS UPRISING 0059U
 SRS SUZETTE 0675S

Birth Weight	87
205 Weight	775
Weaning Rat	105
Sire Avg BW	19@80
Dam Avg BW	9@85
Dam WN Prod	9@104

American Salers EPDs									
CED	BW	WW	YW	MWW	Milk	Marb	Carcass	REA	Fat
+14.1	-1.1	+64	+99	+56	+24	+2	+27.0	+36	-.01
POLLED 5/8 AN 3/8 SA BLACK									

- A bull that will catch your eye in the pen
- Long-made, big top and hip, with extra depth and dimension
- *Dam is an incredible 11 year old cow that is hard to fault



SRS Governor 5184J, Maternal Brother to Lot 118



Optimizer Bulls



119 **SRS LIFETIME 5142N**
 tattoo: SRS5142N birth: 1/30/2025 reg #: P769833
OPTIMIZER BULL
 SRS HONEST 3136H WK BLACKBIRD 2256B
SRS LIFETIME 6111L SRS BULLSEYE 592B
 SRS STARR 6111D *SRS STARR 0653S
 SRS AMERICAN 0472A PRK YELLOWSTONE 966Y
***SRS JULIET 5142C** SRS PONDERA 0472P
 SRS JULIET 1151 Y MYTTY THUNDERSTRUCK
 SRS JULIET 0520R

Birth Weight	79
205 Weight	750
Weaning Rat	102
Sire Avg BW	19@80
Dam Avg BW	9@81
Dam WN Prod	8@105

American Salers EPDs									
CED	BW	WW	YW	MWW	Milk	Marb	Carcass	REA	Fat
+16.8	-2.3	+62	+98	+53	+22	+2	+28.4	+43	-.02
POOLED 5/8 AN 3/8 SA HOMOZYGOUS BLACK									

Heifer Bull Potential
 • A bull that is incredibly long and square-made with excellent thickness
 • Dam is a beautifully designed cow even at 11 years of age



120 **SRS LIFETIME 0110N**
 tattoo: SRS0110N birth: 2/3/2025 reg #: S769835
OPTIMIZER BULL
 SRS HONEST 3136H SRS BLOCKBUSTER 2256B
SRS LIFETIME 6111L WK BLACKBIRD 2224
 SRS STARR 6111D SRS BULLSEYE 592B
 *SRS STARR 0653S
 SRS DYNASTY 667D CONNEALY GREELEY
SRS KRISTY 0110H *SRS FINICKY 0838U
 SRS KRISTY 3162A SRS UPRISING 0059U
 SRS KRISTY 0930W

Birth Weight	74
205 Weight	717
Weaning Rat	97
Sire Avg BW	19@80
Dam Avg BW	4@74
Dam WN Prod	4@98

American Salers EPDs									
CED	BW	WW	YW	MWW	Milk	Marb	Carcass	REA	Fat
+17.6	-2.5	+64	+102	+50	+18	+2	+34.0	+45	-.01
SCURRED 5/8 AN 3/8 SA HOMOZYGOUS BLACK									

Heifer Bull Potential
 • A stout-made bull with added length and depth



Optimizer Bulls



REFERENCE
SIRE

SRS Headline 0302L



REFERENCE
SIRE

SRS Keystone 5132

121 SRS HEADLINE 6115N

OPTIMIZER BULL tattoo: SRS6115N birth: 2/20/2025 reg #: S770716

SRS HEADLINE 2277H	MUSGRAVE 316 STUNNER	Birth Weight	80
SRS HEADLINE 0302L	*SRS ROSE 2277H	205 Weight	855
SRS HEATHER BLOOM 0302L	BGC FORGE	Weaning Rat	116
	*SRS HEATHER BLOOM7280E	Sire Avg BW	2@87
SRS ZEUS 0509Z	SITZ UNCOMMON	Dam Avg BW	6@83
SRS LUCY 6115D	*PRK MISS MONTANA 503R	Dam WN Prod	5@105
SRS LUCY 0935W	*SRS NEVADA 9378N		
	SRS LUCY 0149L		

American Salers EPDs									
CED	BW	WW	YW	MWW	Milk	Marb	Carcass	REA	Fat
+18.2	-2.7	+67	+98	+57	+25	+3	+41.9	+41	-.01
SCURRED 3/4 AN 1/4 SA HOMOZYGOUS BLACK									

Heifer Bull Potential

- A bull that is correct in his lines and thick with a great 205 day ratio
- Dam is a level-designed, femine-fronted 10 year old cow



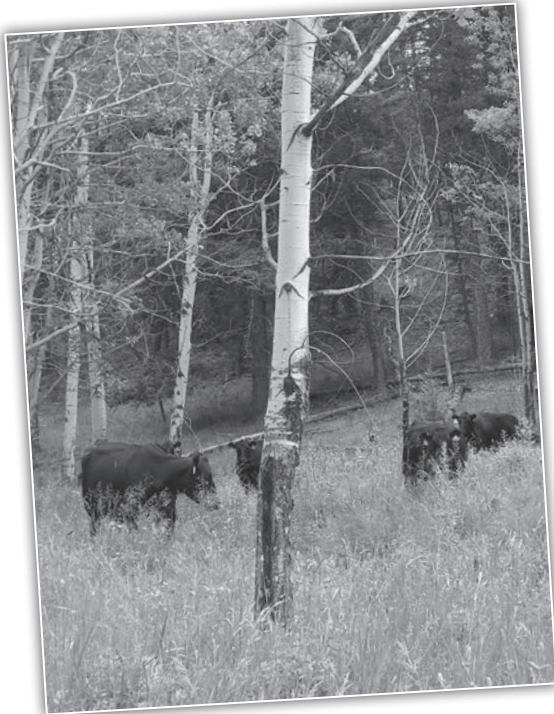
122 SRS KEYSTONE 9170N

OPTIMIZER BULL tattoo: SRS9170N birth: 1/30/2025 reg #: P769813

SRS GENERAL 4180G	SRS DYNASTY 667D	Birth Weight	99
SRS KEYSTONE 5132	SRS JULIET 4180B	205 Weight	797
SRS JULIET 5132C	SRS GUNSLINGER 605Z	Weaning Rat	108
	*SRS JULIET 0522R	Sire Avg BW	37@87
SRS BLOCKBUSTER 2256B	SOO LINE MOTIVE 9016	Dam Avg BW	5@90
SRS COLUMBIA 9170G	SRS ROSE 2256Z	Dam WN Prod	4@102
SRS COLUMBIA 4108B	LYZS ROWDY 28R		
	*SRS COLUMBIA 0530R		

American Salers EPDs									
CED	BW	WW	YW	MWW	Milk	Marb	Carcass	REA	Fat
+5.2	+2.7	+69	+109	+51	+17	+1	+35.6	+49	-.02
POLLED 1/2 SA 1/2 AN HOMOZYGOUS BLACK									

- A powerfully constructed bull that is impressive



MATERNAL
BROTHER

SRS Guideline 9170J, Maternal Brother to Lot 122

123 SRS LIFETIME 2318N

OPTIMIZER BULL tattoo: SRS2318N birth: 2/6/2025 reg #: P769840

SRS HONEST 3136H	SRS BLOCKBUSTER 2256B	Birth Weight	83
SRS LIFETIME 6111L	WK BLACKBIRD 2224	205 Weight	734
SRS STARR 6111D	SRS BULLSEYE 592B	Weaning Rat	99
	*SRS STARR 0653S	Sire Avg BW	19@80
SRS GENERAL 4180G	SRS DYNASTY 667D	Dam Avg BW	2@79
SRS SUZETTE 2318	SRS JULIET 4180B	Dam WN Prod	2@93
*SRS SUZETTE 5184C	SRS YAKIMA 9118YY		
	SRS SUZETTE 3160A		

American Salers EPDs									
CED	BW	WW	YW	MWW	Milk	Marb	Carcass	REA	Fat
+13.9	-1.1	+63	+99	+50	+18	+2	+31.4	+46	-.01
POLLED 5/8 AN 3/8 SA HOMOZYGOUS BLACK									

- Great design and dimension to this bull *Dam has a great udder



Optimizer Bulls

124 SRS KEYSTONE 0113N

OPTIMIZER BULL

tattoo: SRS0113N birth: 1/29/2025 reg #: P769814

SRS GENERAL 4180G
SRS KEYSTONE 5132
 SRS JULIET 5132C

SRS DYNASTY 667D
 SRS JULIET 4180B
 SRS GUNSLINGER 605Z
 *SRS JULIET 0522R
 MUSGRAVE SKY HIGH 1535
 MUSGRAVE PRIDE 1416-166
 LYZS ROWDY 28R
 *SRS COLUMBIA 0530R

Birth Weight	90
205 Weight	692
Weaning Rat	94
Sire Avg BW	37@87
Dam Avg BW	4@84
Dam WN Prod	4@96

MUSGRAVE FEATURE
SRS COLUMBIA 0113H
 SRS COLUMBIA 4108B

American Salers EPDs									
CED	BW	WW	YW	MWW	Milk	Marb	Carcass	REA	Fat
+7.8	+1.6	+59	+92	+45	+16	+2	+32.1	+58	-.02

POLLED 1/2 SA 1/2 AN HOMOZYGOUS BLACK

- A bull that is thick, smooth-made and is excellent on the move
- Dam is an exceptional young cow that is extremely ideal



REFERENCE SIRE

Bar-E-L Chief 81K

125 SRS LIFETIME 7126N

OPTIMIZER BULL

tattoo: SRS7126N birth: 1/17/2025 reg #: P770717

SRS HONEST 3136H
SRS LIFETIME 6111L
 SRS STARR 6111D

SRS BLOCKBUSTER 2256B
 WK BLACKBIRD 2224
 SRS BULLSEYE 592B
 *SRS STARR 0653S

Birth Weight	76
205 Weight	679
Weaning Rat	92
Sire Avg BW	19@80
Dam Avg BW	10@85
Dam WN Prod	5@103

SRS BOTTOM LINE 978B
***SRS LACE 7126E**
 SRS LACE 3179A

SOO LINE MOTIVE 9016
 SRS JULIET 0584R
 SRS UNREAL 0151U
 *SRS LACE 8114U

American Salers EPDs									
CED	BW	WW	YW	MWW	Milk	Marb	Carcass	REA	Fat
+17.9	-3.6	+52	+83	+49	+23	+2	+23.8	+34	-.01

POLLED 5/8 AN 3/8 SA BLACK

Heifer Bull Potential

- A long-spined bull that is level-designed
- Dam is a beautiful cow with a gorgeous udder



MATERNAL BROTHER

SRS Element 7126K, Maternal Brother to Lot 125

126 SRS CHIEF 8106N

OPTIMIZER BULL

tattoo: SRS8106N birth: 2/24/2025 reg #: S769850

BROOKING NATIONAL 0144
BAR-E-L CHIEF 81K
 BAR-E-L NAOMI 27C

S A V RENOVATION 6822
 SOO LINE ROSE 1019
 BAR-E-L NATURAL LAW 52Y
 BAR-E-L NAOMI 83U

Birth Weight	101
205 Weight	781
Weaning Rat	106
Sire Avg BW	122@87
Dam Avg BW	6@79
Dam WN Prod	6@97

SRS DYNASTY 667D
SRS PONY TAIL 8106F
 SRS PONY TAIL 0778T

CONNEALEY GREELEY
 *SRS FINICKY 0838U
 SRS REMBRANDT 8300R
 *SRS PONY TAIL 0302N

American Salers EPDs									
CED	BW	WW	YW	MWW	Milk	Marb	Carcass	REA	Fat
+7.6	+2.0	+70	+111	+55	+20	+4	+44.6	+58	+0.1

SCURRED 3/4 AN 1/4 SA HOMOZYGOUS BLACK

- A bull that has good performance in a thick, level-made package
- Dam is an attractive, thick-made female with a good udder



127 SRS LIFETIME 1304N

OPTIMIZER BULL

tattoo: SRS1304N birth: 2/7/2025 reg #: P769836

SRS HONEST 3136H
SRS LIFETIME 6111L
 SRS STARR 6111D

SRS BLOCKBUSTER 2256B
 WK BLACKBIRD 2224
 SRS BULLSEYE 592B
 *SRS STARR 0653S

Birth Weight	83
205 Weight	742
Weaning Rat	101
Sire Avg BW	19@80
Dam Avg BW	3@80
Dam WN Prod	3@93

SRS GENERAL 4180G
SRS JULIET 1304J
 SRS JULIET 3126A

SRS DYNASTY 667D
 SRS JULIET 4180B
 SRS TRADEMARK 732T
 SRS JULIET 0520R

American Salers EPDs									
CED	BW	WW	YW	MWW	Milk	Marb	Carcass	REA	Fat
+14.0	-1.1	+63	+98	+49	+17	+2	+33.0	+53	-.01

POLLED 5/8 AN 3/8 SA HOMOZYGOUS BLACK

- A long spined, thick bull



128 SRS LIFETIME 1306N

OPTIMIZER BULL

tattoo: SRS1306N birth: 1/31/2025 reg #: P769837

SRS HONEST 3136H
SRS LIFETIME 6111L
 SRS STARR 6111D

SRS BLOCKBUSTER 2256B
 WK BLACKBIRD 2224
 SRS BULLSEYE 592B
 *SRS STARR 0653S

Birth Weight	77
205 Weight	714
Weaning Rat	97
Sire Avg BW	19@80
Dam Avg BW	3@71
Dam WN Prod	3@91

SRS GENERAL 4180G
SRS RUSSETT 1306J
 SRS RUSSETT 3147A

SRS DYNASTY 667D
 SRS JULIET 4180B
 SRS YALE 0309Y
 SRS RUSSETT 0305N

American Salers EPDs									
CED	BW	WW	YW	MWW	Milk	Marb	Carcass	REA	Fat
+15.7	-1.9	+64	+102	+50	+17	+2	+36.1	+61	-.02

POLLED 5/8 AN 3/8 SA BLACK

Heifer Bull Potential



129 SRS KEYSTONE 1309N

tattoo: SRS1309N birth: 2/5/2025 reg #: P769815

OPTIMIZER BULL

SRS GENERAL 4180G	SRS DYNASTY 667D	Birth Weight	78
SRS KEYSTONE 5132	SRS JULIET 4180B	205 Weight	735
SRS JULIET 5132C	SRS GUNSLINGER 605Z	Weaning Rat	100
	*SRS JULIET 0522R	Sire Avg BW	37@87
SRS GOVERNOR 4111G	SRS ENGAGE 4221E	Dam Avg BW	3@77
SRS FOOTLOOSE 1309J	SRS LACE 4111B	Dam WN Prod	3@92
SRS FOOTLOOSE 3173A	SRS UPRISING 0059U		
	SRS FOOTLOOSE 1169 Y		

American Salers EPDs									
CED	BW	WW	YW	MWW	Milk	Marb	Carcass	REA	Fat
+14.8	-1.6	+59	+88	+45	+16	+1	+33.7	+56	-.03
POLLED 1/2 SA 1/2 AN HOMOZYGOUS BLACK									

Heifer Bull Potential



132 SRS LOKI 9122N

tattoo: SRS9122N birth: 3/17/2025 reg #: P769852

OPTIMIZER BULL

SRS JACKSON 487J	COLEMAN BRAVO 6313	Birth Weight	89
SRS LOKI 1175L	PINE COULEE BLACK ANNIE B87	205 Weight	726
SRS TILLIE 1175J	SQUARE B ATLANTIS 8060	Weaning Rat	98
	KR TILLIE 3079	Sire Avg BW	11@91
SRS DIALED IN 3160D	SRS BULLSEYE 592B	Dam Avg BW	5@85
SRS BAUBLE 9122G	SRS SUZETTE 3160A	Dam WN Prod	5@99
SRS BAUBLE 4148B	SRS ZEUS 0509Z		
	SRS BAUBLE 0780T		

American Salers EPDs									
CED	BW	WW	YW	MWW	Milk	Marb	Carcass	REA	Fat
+12.2	-0.4	+54	+85	+50	+23	+3	+29.6	+42	+0.00
POLLED 3/4 AN 1/4 SA BLACK									

• Square made bull that is a little younger



130 SRS KEYSTONE 1316N

tattoo: SRS1316N birth: 1/31/2025 reg #: P769816

OPTIMIZER BULL

SRS GENERAL 4180G	SRS DYNASTY 667D	Birth Weight	82
SRS KEYSTONE 5132	SRS JULIET 4180B	205 Weight	744
SRS JULIET 5132C	SRS GUNSLINGER 605Z	Weaning Rat	101
	*SRS JULIET 0522R	Sire Avg BW	37@87
SRS GOVERNOR 4111G	SRS ENGAGE 4221E	Dam Avg BW	3@82
SRS JULIET 1316J	SRS LACE 4111B	Dam WN Prod	3@102
*SRS JULIET 5142C	SRS AMERICAN 0472A		
	SRS JULIET 1151 Y		

American Salers EPDs									
CED	BW	WW	YW	MWW	Milk	Marb	Carcass	REA	Fat
+12.4	-0.6	+60	+90	+50	+20	+1	+33.7	+59	-.04
POLLED 1/2 SA 1/2 AN HOMOZYGOUS BLACK									

• A long-made bull



131 SRS LIFETIME 1317N

tattoo: SRS1317N birth: 2/2/2025 reg #: P769838

OPTIMIZER BULL

SRS HONEST 3136H	SRS BLOCKBUSTER 2256B	Birth Weight	89
SRS LIFETIME 6111L	WK BLACKBIRD 2224	205 Weight	741
SRS STARR 6111D	SRS BULLSEYE 592B	Weaning Rat	100
	*SRS STARR 0653S	Sire Avg BW	19@80
SRS GOVERNOR 4111G	SRS ENGAGE 4221E	Dam Avg BW	3@89
SRS RUSSETT 1317J	SRS LACE 4111B	Dam WN Prod	3@105
SRS RUSSETT 5164C	SRS AMERICAN 0472A		
	SRS RUSSETT 3148A		

American Salers EPDs									
CED	BW	WW	YW	MWW	Milk	Marb	Carcass	REA	Fat
+11.9	-0.7	+70	+113	+55	+20	+2	+39.1	+64	-.02
POLLED 5/8 AN 3/8 SA HOMOZYGOUS BLACK									

• A good bull in the pen, long, thick and square



133 SRS LIFETIME 2336N

tattoo: SRS2336N birth: 1/30/2025 reg #: P769842

OPTIMIZER BULL

SRS HONEST 3136H	SRS BLOCKBUSTER 2256B	Birth Weight	79
SRS LIFETIME 6111L	WK BLACKBIRD 2224	205 Weight	651
SRS STARR 6111D	SRS BULLSEYE 592B	Weaning Rat	88
	*SRS STARR 0653S	Sire Avg BW	19@80
SRS GOVERNOR 4111G	SRS ENGAGE 4221E	Dam Avg BW	2@67
SRS COLUMBIA 2336	SRS LACE 4111B	Dam WN Prod	2@94
SRS COLUMBIA 9169G	SRS BLOCKBUSTER 2256B		
	SRS COLUMBIA 4108B		

American Salers EPDs									
CED	BW	WW	YW	MWW	Milk	Marb	Carcass	REA	Fat
+15.5	-2.5	+59	+101	+46	+15	+2	+36.0	+44	-.01
POLLED 5/8 AN 3/8 SA HOMOZYGOUS BLACK									

Heifer Bull Potential



Optimizer Bulls



MATERNAL BROTHER

SRS General 1317M, Maternal Brother to Lot 131



134 SRS LIFETIME 4180N

tattoo: SRS4180N birth: 1/25/2025 reg #: P769809

OPTIMIZER BULL

SRS HONEST 3136H
SRS LIFETIME 6111L
 SRS STARR 6111D

SRS GUNSLINGER 605Z
SRS JULIET 4180B
 SRS JULIET 0218M

SRS BLOCKBUSTER 2256B
 WK BLACKBIRD 2224

SRS BULLSEYE 592B
 *SRS STARR 0653S

TOMBSTONE 050
 BASIN JOYCE S474

SRS FOCUS 9403F
 SRS JULIET 9505E

Birth Weight	84
205 Weight	755
Weaning Rat	102
Sire Avg BW	19@80
Dam Avg BW	11@82
Dam WN Prod	10@99

American Salers EPDs									
CED	BW	WW	YW	MWW	Milk	Marb	Carcass	REA	Fat
+15.8	-2.2	+61	+95	+51	+20	+2	+29.2	+.51	-.02
POLLED 5/8 AN 3/8 SA BLACK									

Heifer Bull Potential

- Bigger outlined bull with exceptional length



REFERENCE SIRE

SRS Keystone 5132



MATERNAL BROTHER

SRS Dynasty 4180G, Maternal Brother to Lot 134

136 SRS KEYSTONE 6109N

tattoo: SRS6109N birth: 2/8/2025 reg #: P770713

OPTIMIZER BULL

SRS GENERAL 4180G
SRS KEYSTONE 5132
 SRS JULIET 5132C

SRS DYNASTY 667D
 SRS JULIET 4180B

SRS GUNSLINGER 605Z
 *SRS JULIET 0522R

SRS BOTTOM LINE 978B
SRS PRICELESS 6109D
 SRS PRICELESS 0447P

SOO LINE MOTIVE 9016
 SRS JULIET 0584R

SPRINGDALE INDEPENDANCE
 SRS JESSICA 9975J

Birth Weight	104
205 Weight	661
Weaning Rat	90
Sire Avg BW	37@87
Dam Avg BW	7@93
Dam WN Prod	4@100

American Salers EPDs									
CED	BW	WW	YW	MWW	Milk	Marb	Carcass	REA	Fat
+3.9	+2.8	+53	+81	+45	+18	+1	+24.0	+.51	-.03
POLLED 1/2 SA 1/2 AN HOMOZYGOUS BLACK									

- A rugged-made bull with lots of thickness



135 SRS CHIEF 5129N

tattoo: SRS5129N birth: 2/27/2025 reg #: S769853

OPTIMIZER BULL

BROOKING NATIONAL 0144
BAR-E-L CHIEF 81K
 BAR-E-L NAOMI 27C

SRS ZEUS 0509Z
SRS PONDERA 5129C
 SRS PONDERA 0472P

S A V RENOVATION 6822
 SOO LINE ROSE 1019

BAR-E-L NATURAL LAW 52Y
 BAR-E-L NAOMI 83U

SITZ UNCOMMON
 *PRK MISS MONTANA 503R

SRS MARKSMAN 0059M
 SRS DAINTY 9478D

Birth Weight	102
205 Weight	809
Weaning Rat	110
Sire Avg BW	122@87
Dam Avg BW	8@94
Dam WN Prod	5@103

American Salers EPDs									
CED	BW	WW	YW	MWW	Milk	Marb	Carcass	REA	Fat
+6.1	+2.5	+68	+103	+59	+25	+3	+42.8	+.61	-.01
SCURRED 3/4 AN 1/4 SA HOMOZYGOUS BLACK									

- A bull that will add pounds to your calf crop



137 SRS KEYSTONE 2314N

tattoo: SRS2314N birth: 2/20/2025 reg #: P769818

OPTIMIZER BULL

SRS GENERAL 4180G
SRS KEYSTONE 5132
 SRS JULIET 5132C

SRS DYNASTY 667D
 SRS JULIET 4180B

SRS GUNSLINGER 605Z
 *SRS JULIET 0522R

SRS GUIDELINE 7126G
SRS JULIET 2314
 SRS JULIET 4182B

SRS ELEMENT 4154E
 *SRS LACE 7126E

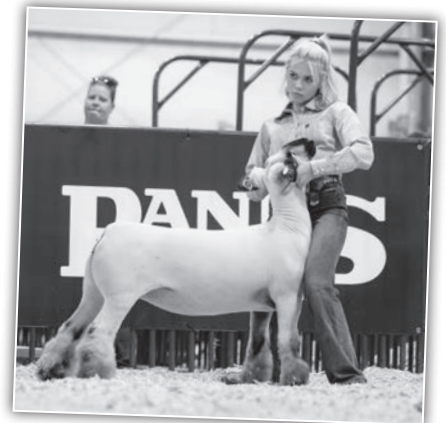
SOO LINE MOTIVE 9016
 SRS JULIET 0584R

Birth Weight	83
205 Weight	696
Weaning Rat	94
Sire Avg BW	37@87
Dam Avg BW	2@73
Dam WN Prod	2@93

American Salers EPDs									
CED	BW	WW	YW	MWW	Milk	Marb	Carcass	REA	Fat
+9.8	+0	+53	+79	+44	+17	+1	+21.7	+.48	-.03
POLLED 1/2 SA 1/2 AN HOMOZYGOUS BLACK									



Optimizer Bulls





SRS DONOR COWS

SRS BREED BULLS





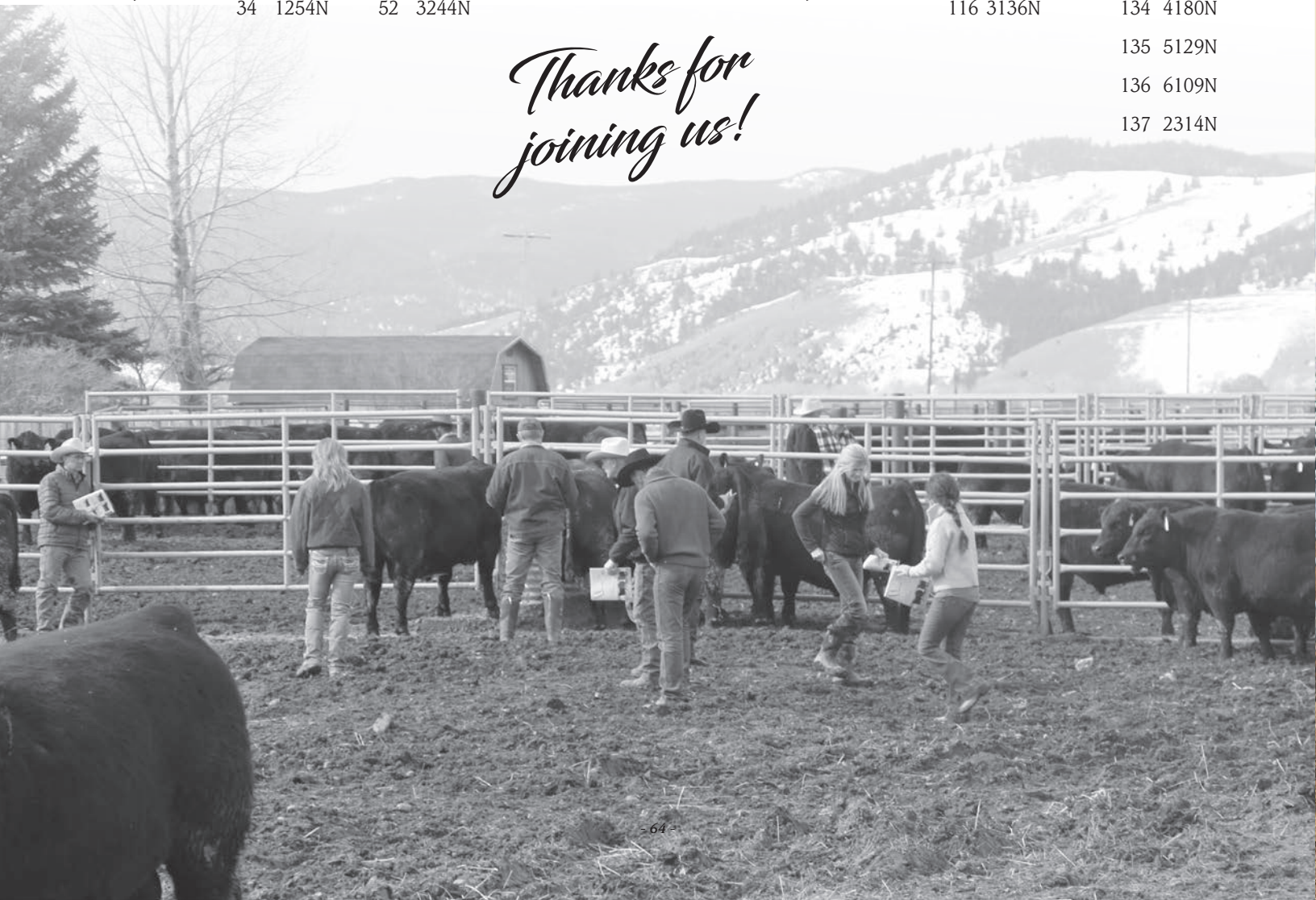
**ANGUS
OPTIMIZERS**

SRS BREED BULLS

Angus**Optimizer**

<u>Lot</u> <u>Herd ID</u>	<u>Lot</u> <u>Herd ID</u>	<u>Lot</u> <u>Herd ID</u>	<u>Lot</u> <u>Herd ID</u>	<u>Lot</u> <u>Herd ID</u>	<u>Lot</u> <u>Herd ID</u>	<u>Lot</u> <u>Herd ID</u>	<u>Lot</u> <u>Herd ID</u>
Yearling Bulls	17 6155N	35 7291N	53 6242N	Two Year Old Bulls	Yearling Bulls	99 3122N	117 1331N
	18 5128N	36 3151N	54 9134N			100 3176N	118 5184N
1 1127N	19 8209N	37 7214N	55 1301N	70 1240M	83 1153N	101 8224N	119 5142N
2 1204N	20 107N	38 3263N	56 2188N	71 998M	84 1114N	102 1321N	120 0110N
3 9300N	21 3182N	39 614N	57 1235N	72 0221M	85 2199N	103 604N	121 6115N
4 9239N	22 0226N	40 0245N	58 7125N	73 994M	86 3157N	104 2189N	122 9170N
5 9140N	23 5419N	41 1206N	59 0188N	74 9378M	87 3243N	105 5218N	123 2318N
6 0127N	24 8108N	42 1208N	60 7231N	75 0207M	88 3105N	106 1131N	124 0113N
7 1172N	25 3138N	43 4208N	61 6238N	76 7214M	89 0268N	107 6241N	125 7126N
8 3126N	26 3197N	44 0286N	62 7238N	77 7218M	90 1240N	108 7246N	126 8106N
9 0228N	27 1175N	45 0277N	63 1108N	78 029M	91 9233N	109 1126N	127 1304N
10 1202N	28 0136N	46 3169	64 8229N	79 1139M	92 1147N	110 1244N	128 1306N
11 1149N	29 199N	47 3235N	65 1146N	80 5207M	93 3237N	111 7203N	129 1309N
12 6206N	30 3114N	48 1104N	66 5281N	81 1133M	94 3185N	112 0263N	130 1316N
13 0227N	31 3277N	49 3251N	67 8245N	82 785M	95 3103N	113 2128N	131 1317N
14 907N	32 501N	50 5220N	68 8232N		96 515N	114 2240N	132 9122N
15 6264N	33 7213N	51 3211N	69 7275N		97 3222N	115 2139N	133 2336N
16 906N	34 1254N	52 3244N			98 3123N	116 3136N	134 4180N
							135 5129N
							136 6109N
							137 2314N

*Thanks for
joining us!*





*Sale Day
2025 Thank You!*





162 Farm to Market West
Hall, MT 59837-9621

406/ 581-1852
skinnerranch@hotmail.com

Presorted
FIRST CLASS
US Postage
Paid
Ballyhoo Printing
59457

FIRST CLASS

