

STIPE ANGUS RANCH STIPE Chocolats

40TH Annual BULL SALE

FRIDAY, APRIL 3, 2026 - 12:30 MST - MONTANA LIVESTOCK AUCTION



WELCOME

On behalf of the Stipe Family, we would like to welcome you to our **40th Annual Bull Sale** and sincerely thank you for your continued support, confidence, and interest in our genetics. Reaching this milestone is something we are truly proud of, and it would not be possible without the loyalty of our customers and friends throughout the years.

The past few years have brought a great deal of excitement and opportunity to the cattle industry. With the national cow herd at its lowest level in over 60 years, we anticipate calf prices to remain strong and continue setting records. As herd numbers decline, red meat yield and efficiency become increasingly important, and we are confident that our genetics are well suited for the times ahead.

You may notice that this year's catalog looks different from those in the past. All bulls in this offering are fully registered with the American-International Charolais Association (AICA) and include the raw performance data that has always been available. In addition, EPDs and carcass ultrasound data are provided as added selection tools. If you have any questions regarding EPDs, please do not hesitate to contact us, or visit charolaisusa.com for further explanation.

DNA samples have been submitted on all bulls for genomic-enhanced EPDs, sire verification, and Progressive Ataxia, and results will be provided by sale day through a supplement sheet as they become available.

Our 2026 sale offering, as in years past, is loaded with power, depth, and consistency from top to bottom. Since the beginning of Stipe Charolais, our focus has remained the same—performance without sacrificing calving ease or quality. We believe this year's bulls represent that philosophy well and will go to work immediately in a wide variety of production environments.

We appreciate your interest in our program and invite you to evaluate the bulls and visit with us prior to or on sale day. If you have any questions, we are always happy to visit and help in any way we can.

We look forward to seeing you on sale day.

the Stipe Family



40TH Annual

BULL SALE

FRIDAY, APRIL 3, 2026 - 12:30 MST

SALE DISCOUNTS:

As always, we offer a **\$100 DISCOUNT** for those who take their bulls home the day of sale.

SALE DAY LOCATION:

MONTANA LIVESTOCK AUCTION -
100 CATTLE DRIVE RAMSAY, MT 59748

SALE DAY PHONES:

Marv Stipe: 406-240-4150 - Chico Stipe: 406-274-5510
Laramie Stipe: 541-212-5253

AUCTIONEER:

Jace Thompsen: 406-690-4151

SALE CONSULTANTS:

Duane Whiting: 304-377-9179 - Jim Johnson: 434-546-2341

MLA STAFF CONTACTS:

Daryn Cyderberg: 406-560-0960 -
Cassidy Brunner, MLA Office: 406-782-1884

ONLINE BIDDING:

Available Through DV Auction & Cattle USA
@dvauction.com - @cattleusa.com

Bidding will be available online via DV auction and cattleUSA. A video catalog of the bulls will also be available on DV auction weeks prior to sale day; We encourage you to go through these videos prior to sale day.

FOLLOW US:

Follow us on Facebook and Instagram
Insta: [@stipe.Charolais](#) - Facebook: [Stipe Charolais](#)

SCHEDULE OF EVENTS

FRIDAY, APRIL 3, 2026

ALL DAY - CATTLE AVAILABLE FOR VIEWING

11:30 A.M. - ANNUAL TRI-TIP DINNER SERVED

12:30 MST - ANNUAL PRODUCTION SALE

SALE DAY MEAL:

We hope to see you at the **Montana Livestock Auction** facility in Ramsay, MT on sale day! The annual **Tri-Tip lunch** will be provided at **11:30 MST**.

CATTLE VIEWING:

Cattle can be viewed anytime at the Stipe Charolais ranch in Moiese, MT up until Wednesday, April 1st prior to sale day. Bulls will be shipped to Ramsay on Thursday, April 2nd and will be available for viewing the evening of the 2nd and sale day morning.

SALE ORDER:

The bulls will sell in catalog order, We will begin with the Angus bulls first followed by the Charolais. Please check our Facebook, Instagram, and website for sale order updates

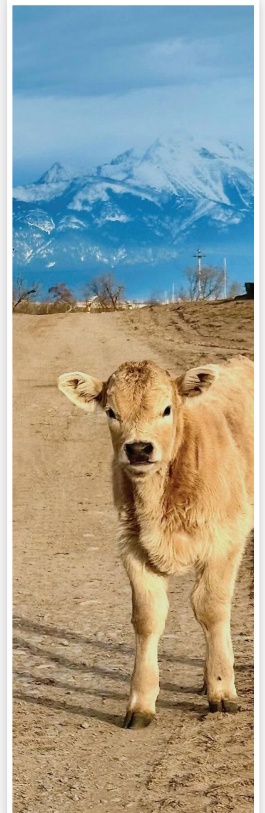
TERMS & CONDITIONS:

Cattle will sell under the terms and conditions of the AICA. Any announcements from the block take precedence over the sale book material.



Welcome to the Stipe Family

NEW FAMILY MEMBERS - SCOTTIE & STEVIE STIPE & BARRICK HOULE



SCM DOUBLE OVERTIME F1016



REF SIRE	CHAROLAIS - BD.5/12/16	M950559
BW	SCM MR PAYCHECK S356	
90	SCM PAYRAISE C316	
WW	SCM MISS MONTANA MARBLER P147	
760	SCM DOUBLE TROUBLE A766	
ADG	SCM MISS LUCKY DOUBLE C327	
3.75	SCM MISS LUCKY PAYCHECK A907	
YW		
1229		

Overtime continues to put his stamp on our program with his 7th calf crop and they are as solid as ever. Overtime now has 4 sons and one grandson actively breeding in our program. It is without question that he is the most

impactful sire in our program in the last 20 years. At 8 years old, he is still in phenomenal shape, perfect footed and primed for another breeding season. Semen is available (call for pricing).

SCM HOLLYWOOD J86



REF SIRE	CHAROLAIS - BD. 2/17/21	M968259
BW	SCM PAYRAISE C316	
90	CM DOUBLE OVERTIME F1016	
WW	SCM MISS LUCKY DOUBLE C327	
663	SCM LITTLE JOE D696	
ADG	SCM MISS LJ G687	
2.93	SCM MISS DJ A217	
YW		
1131		

A sure-shot heifer bull! Hollywood has quickly become a staple in our program for breeding first calf heifers. His moderate birthweight and calving ease are the perfect recipe for a full night of sleep. With several females now in production in our herd, he is proving his maternal traits with his daugh-

ters showing remarkable mothering ability with ample milk production to boot. He also stamps his calves with excellent disposition to go along with their moderate frame and deep, heavy muscled structure.

SCM SHERIFF K106



REF SIRE	CHAROLAIS - BD. 3/4/22	M1006286
BW	CM PAYRAISE C316	
94	M DOUBLE OVERTIME F1016	
WW	SCM MISS LUCKY DOUBLE C327	
767	M DOUBLE TROUBLE A766	
ADG	SCM MISS DT D207	
2.84	SCM MISS PAYCHECK W37	
YW		
1203		

Sheriff is showing great promise and looks poised to take his Sire's place as top dog in the bull battery. Sheriff adds extra length and style to his calves that turn heads. Sheriff has been entered into the AICA Accusire Program

where his offspring will be tested from birth to harvest for a full evaluation of his genetic power.

SCC SURTAIN K28

REF SIRE	CHAROLAIS - BD. 3/25/22	M1005970
BW	SCM PAYRAISE C316	
89	SCM DOUBLE OVERTIME F1016	
WW	SCM MISS LUCKY DOUBLE C327	
788	SCM DOUBLE TROUBLE A766	
ADG	SCC MISS DT E747	
N/A	SCM MISS DOUBLE JOE N107	
YW		
1237		



Surtain might very well boast the top sire group in this year's offering. His first large calf crop did not disappoint as they exploded in performance

and looked the part while doing it. Surtain boasts the top bull in this year's offering for REA and Marbling! (Lot 18).

SCM MARSHALL L266

REF SIRE	CHAROLAIS - BD. 3/17/23	M1005848
BW	SCM PAYRAISE C316	
86	CM DOUBLE OVERTIME F1016	
WW	SCM MISS LUCKY DOUBLE C327	
765	SCM LITTLE JOE D696	
ADG	SCM MISS LJ G687	
3.25	SCM MISS DJ A217	
YW		
1223		



The latest son of SCM Double Overtime F1016 to hit the herd bull lineup on the ranch and he did not disappoint in his first crop. Marshall covered

a group of first calf heifers and showed his promise from calving ease and overall performance, all the way down to disposition.

SCM DECKER K156

REF SIRE	CHAROLAIS - BD. 3/7/22	M1006287
BW	RAILE SOVEREIGN J827 Y064	
88	SCC CROWN ROYAL D46	
WW	SCC CROWN JEWEL B187	
731	SCM DOUBLE TROUBLE A766	
ADG	SCM MISS DT D497	
2.0	CM MISS PAYCHECK B147	
YW		
1062		



The last son of SCC Crown Royal D46. Crown Royal played a huge role in our current cow herd. Producing females with exceptional udder quality and milk production, his females make up one third of our current cow herd.

Decker K156 exemplifies many of his sires qualities, adding a smooth, clean look to his calves without sacrificing muscle and depth of body.

SCM HARD KNOCKS E266



REF SIRE	CHAROLAIS - BD. 3/11/17	M950558
BW	SCM MR DBL JOE T36	
82	SCM DOUBLE TROUBLE A766	
WW	SCM MISS ROCKY DJ N287	
725	SCM MR PAYCHECK T536	
ADG	SCM MISS PAYCHECK A797	
5.26	SCM MISS PAYCHECK W27	
YW		
1430		

Hard Knocks now takes the crown of oldest walking herd sire on the ranch. Now going on 9 years of age and ready for another breeding season after covering 50 cows this past spring.



SCM KING JOE G306

REF SIRE	CHAROLAIS - BD. 3/18/19	M968237
BW	SCM CROOKED JOE Z616	
92	SCM LITTLE JOE D696	
WW	SCM MISS MT PAYCHECK X507	
703	SCM MR PAYCHECK T536	
ADG	SCM MISS PAYCHECK X417	
3.09	SCM MISS DOUBLE JOE R27	
YW		
1148		

SALE NOTES

BALAMORE LAKOTA 318L

REF SIRE	CHAROLAIS - BD. 3/25/22	M1005970
BW	SCM PAYRAISE C316	
89	SCM DOUBLE OVERTIME F1016	
WW	SCM MISS LUCKY DOUBLE C327	
788	SCM DOUBLE TROUBLE A766	
ADG	SCC MISS DT E747	
N/A	SCM MISS DOUBLE JOE N107	
YW		
1237		



FINK 235 OF 3821 GS

REF SIRE	CHAROLAIS - BD. 2/5/22	EM977303
BW	M6 NEW STANDARD 842 P ET	
N/A	FINK GOLD STANDARD 0153	
WW	FINKS MISS 25503575BUDET	
816	VPI FREE LUNCH 708T	
ADG	FINK LADY 3821 9521 FL	
3.72	FINK LADY 9521 6815 GM	
YW		
1460		



TRI-TIP **SALE DAY MEAL**
 We hope to see you at the **Montana Livestock Auction** facility in Ramsay, MT on sale day!
 The annual **Tri-Tip lunch** will be provided at **11:30 MST.**





LOT 1

SCM MR KING JOE N106

1

CHAROLAIS M1020565 - DOB. 3/5/25 - HERD# N106

sire. **SCM KING JOE G306 (M968237)**

dam. **C497 - SCM MISS CJ C497 (F1307969)**

BW	WW	ADJ WW	WW INDEX	YW	ADJ YW	YW INDEX	ADG
88	1020	889	117.1	1480	1540	118.6	4.07
ADG INDEX	CE EPD	BW EPD	WW EPD	YW EPD	TSI EPD	REA EPD	MARB EPD
120.7	11.2	-1.2	66	124	254	0.66	-0.03



LOT 2

SCM MR SURTAIN N71

2

CHAROLAIS M1020803 - DOB. 3/9/25 - HERD# N71

sire. **SCC SURTAIN K28 (M1005970)**

dam. **J122 - SCM MISS CHARLEY J122 (F1376099)**

BW	WW	ADJ WW	WW INDEX	YW	ADJ YW	YW INDEX	ADG
105	1100	985	129.8	1460	1495	115.1	3.19
ADG INDEX	CE EPD	BW EPD	WW EPD	YW EPD	TSI EPD	REA EPD	MARB EPD
94.6	5.8	2.0	81	136	254	0.77	0.03

SCM MR LAKOTA N161

3

CHAROLAIS M1020572 - DOB. 4/21/25 - HERD# N161

sire. **BALAMORE LAKOTA 318L (M1021234)**

dam. **B42 - SCM MISS CHARLIE'S PRIDE B42 (F1333914)**

BW	WW	ADJ WW	WW INDEX	YW	ADJ YW	YW INDEX	ADG
90	745	793	104.5	1235	1487	114.5	4.34
ADG INDEX	CE EPD	BW EPD	WW EPD	YW EPD	TSI EPD	REA EPD	MARB EPD
128.7	9	-1.3	61	113			

SCM MR OVERTIME N41

4

CHAROLAIS M1021158 - DOB. 3/5/25 - HERD# N41

sire. **SCM DOUBLE OVERTIME F1016 (M950559)**

dam. **B202 - SCM BIG MAMA B202 (F1333912)**

BW	WW	ADJ WW	WW INDEX	YW	ADJ YW	YW INDEX	ADG
87	980	867	114.2	1420	1489	114.7	3.89
ADG INDEX	CE EPD	BW EPD	WW EPD	YW EPD	TSI EPD	REA EPD	MARB EPD
115.3	13.3	-1.6	63	117	258	1.02	-0.05



LOT 5

SCM MR SHERIFF N546

5

CHAROLAIS M1020601 - DOB. 3/31/25 - HERD# N546

sire. **SCM SHERIFF K106 (M1006286)**

dam. **K297 - SCM MISS ROYAL K297 (F1333630)**

BW	WW	ADJ WW	WW INDEX	YW	ADJ YW	YW INDEX	ADG
87	920	920	121.2	1300	1458	112.3	3.36
ADG INDEX	CE EPD	BW EPD	WW EPD	YW EPD	TSI EPD	REA EPD	MARB EPD
99.6	12	-0.6	73	132	273	1.01	0.01

SCM MR GS N776

6

CHAROLAIS M1020618 - DOB. 4/30/25 - HERD# N776

sire. **FINK 235 OF 3821 GS (EM977303)**

dam. **H1066 - SCM MISS OVERTIME H1066 (F1333791)**

BW	WW	ADJ WW	WW INDEX	YW	ADJ YW	YW INDEX	ADG
94	710	777	102.4	1175	1436	110.6	4.12
ADG INDEX	CE EPD	BW EPD	WW EPD	YW EPD	TSI EPD	REA EPD	MARB EPD
122.2	9.7	0.2	64	128	262	0.66	0.11

SCM MR HARD KNOCKS N636

7

CHAROLAIS M1020607 - DOB. 4/6/25 - HERD# N636

sire. **SCM HARD KNOCKS E266 (M950558)**

dam. **G377 - SCM MISS PAYRAISE G377 (F1307523)**

BW	WW	ADJ WW	WW INDEX	YW	ADJ YW	YW INDEX	ADG
88	745	736	97	1265	1472	113.3	4.6
ADG INDEX	CE EPD	BW EPD	WW EPD	YW EPD	TSI EPD	REA EPD	MARB EPD
136.4	14	-2.6	49	107	257	0.86	0.01

SCM MR OVERTIME N456

8

CHAROLAIS M1020594 - DOB. 3/25/25 - HERD# N456

sire. **SCM DOUBLE OVERTIME F1016 (M950559)**

dam. **F327 - SCM MISS TWISTED SISTER (F1307385)**

BW	WW	ADJ WW	WW INDEX	YW	ADJ YW	YW INDEX	ADG
95	820	774	102	1305	1460	112.4	4.29
ADG INDEX	CE EPD	BW EPD	WW EPD	YW EPD	TSI EPD	REA EPD	MARB EPD
127.2	12.1	-0.9	52	106	243	0.56	-0.04



LOT 10

SCM MR LAKOTA N696

9

CHAROLAIS M1020613 - DOB. 4/8/25 - HERD# N696

sire. **BALAMORE LAKOTA 318L (M1021234)**

dam. **Y677 - SCM MISS PAYCHECK Y677 (F1307978)**

BW	WW	ADJ WW	WW INDEX	YW	ADJ YW	YW INDEX	ADG
88	770	796	104.9	1240	1462	112.6	4.16
ADG INDEX	CE EPD	BW EPD	WW EPD	YW EPD	TSI EPD	REA EPD	MARB EPD
123.4	10.4	-1.3	56	110			

SCM MR LAKOTA N111

10

CHAROLAIS M1020788 - DOB. 3/18/25 - HERD# N111

sire. **BALAMORE LAKOTA 318L (M1021234)**

dam. **A212 - SCM CHARLENE A212 (F1376076)**

BW	WW	ADJ WW	WW INDEX	YW	ADJ YW	YW INDEX	ADG
97	815	762	100.4	1320	1477	113.7	4.47
ADG INDEX	CE EPD	BW EPD	WW EPD	YW EPD	TSI EPD	REA EPD	MARB EPD
132.5	5	0.4	50	103	245	0.55	0.00

SCHEDULE OF EVENTS

FRIDAY, APRIL 3, 2026

ALL DAY - CATTLE AVAILABLE FOR VIEWING

11:30 A.M. - ANNUAL TRI-TIP DINNER SERVED

12:30 MST - ANNUAL PRODUCTION SALE

SCM MR SHERIFF N686

11

CHAROLAIS M1020612 - DOB. 4/7/25 - HERD# N686

sire. **SCM SHERIFF K106 (M1006286)**

dam. **G477 - SCM MISS ROYAL G477 (F1333795)**

BW	WW	ADJ WW	WW INDEX	YW	ADJ YW	YW INDEX	ADG
94	885	877	115.5	1225	1359	104.6	3.01
ADG INDEX	CE EPD	BW EPD	WW EPD	YW EPD	TSI EPD	REA EPD	MARB EPD
89.3	10.6	-0.5	68	116	251	0.75	-0.03



LOT 12

SCM MR OVERTIME N786

13

CHAROLAIS M1020807 - DOB. 5/1/25 - HERD# N786

sire. **SCM DOUBLE OVERTIME F1016 (M950559)**

dam. **E267 - SCM MISS DT E267 (F1376075)**

BW	WW	ADJ WW	WW INDEX	YW	ADJ YW	YW INDEX	ADG
85	680	747	98.4	1130	1384	106.6	3.98
ADG INDEX	CE EPD	BW EPD	WW EPD	YW EPD	TSI EPD	REA EPD	MARB EPD
118	13.4	-1.8	53	104			

SCM MR OVERTIME N576

15

CHAROLAIS M1020799 - DOB. 4/1/25 - HERD# N576

sire. **SCM DOUBLE OVERTIME F1016 (M950559)**

dam. **G47 - SCM MISS ROYAL G47 (F1375491)**

BW	WW	ADJ WW	WW INDEX	YW	ADJ YW	YW INDEX	ADG
93	830	803	105.8	1230	1369	105.4	3.54
ADG INDEX	CE EPD	BW EPD	WW EPD	YW EPD	TSI EPD	REA EPD	MARB EPD
105	12.6	-1.4	60	111	257	0.89	-0.03



LOT 16

SCM MR SHERIFF N186

12

CHAROLAIS M1020576 - DOB. 3/12/25 - HERD# N186

sire. **SCM SHERIFF K106 (M1006286)**

dam. **D457 - SCM MISS STETSON D457 (F1308610)**

BW	WW	ADJ WW	WW INDEX	YW	ADJ YW	YW INDEX	ADG
87	990	887	116.8	1325	1361	104.8	2.96
ADG INDEX	CE EPD	BW EPD	WW EPD	YW EPD	TSI EPD	REA EPD	MARB EPD
87.8	14.1	-1.5	70	118	250	0.77	-0.10

SCM MR. KING JOE N96

14

CHAROLAIS M1020626 - DOB. 3/5/25 - HERD# N96

sire. **SCM KING JOE G306 (M968237)**

dam. **B697 - SCM MISS PAYCHECK B697 (F1333789)**

BW	WW	ADJ WW	WW INDEX	YW	ADJ YW	YW INDEX	ADG
91	1095	965	127.1	1335	1304	100.4	2.12
ADG INDEX	CE EPD	BW EPD	WW EPD	YW EPD	TSI EPD	REA EPD	MARB EPD
62.9	11.2	-0.4	69	109	237	0.55	-0.03

40th Annual BULL SALE

FRIDAY, APRIL 3, 2026 - 12:30 MST

SCM MR HARD KNOCKS N66

16

CHAROLAIS M1020802 - DOB. 2/27/25 - HERD# N66

sire. **SCM HARD KNOCKS E266 (M950558)**

dam. **E197 - SCM MISS DT E197 (F1375479)**

BW	WW	ADJ WW	WW INDEX	YW	ADJ YW	YW INDEX	ADG
88	915	784	103.3	1350	1400	107.8	3.85
ADG INDEX	CE EPD	BW EPD	WW EPD	YW EPD	TSI EPD	REA EPD	MARB EPD
114.2	10.5	-2.1	56	106	241	0.28	0.00

SCM MR SURTAIN N426

17

CHAROLAIS M1020592 - DOB. 3/22/25 - HERD# N426

sire. **SCC SURTAIN K28 (M1005970)**

dam. **K277 - SCM MISS ROYAL K277 (F1333704)**

BW	WW	ADJ WW	WW INDEX	YW	ADJ YW	YW INDEX	ADG
86	835	811	106.8	1245	1392	107.2	3.63
ADG INDEX	CE EPD	BW EPD	WW EPD	YW EPD	TSI EPD	REA EPD	MARB EPD
107.6	10.1	-1.7	61	117	261	0.90	0.03

SCHEDULE OF EVENTS

FRIDAY, APRIL 3, 2026

ALL DAY - CATTLE AVAILABLE FOR VIEWING

11:30 A.M. - ANNUAL TRI-TIP DINNER SERVED

12:30 MST - ANNUAL PRODUCTION SALE



LOT 18



LOT 19

SCM MR SURTAIN N86

18

CHAROLAIS M1020624 - DOB. 3/4/25 - HERD# N86

sire. **SCC SURTAIN K28 (M1005970)**

dam. **K37 - SCM MISS GAMUL K37 (F1333712)**

BW	WW	ADJ WW	WW INDEX	YW	ADJ YW	YW INDEX	ADG
85	915	830	109.3	1315	1396	107.5	3.54
ADG INDEX	CE EPD	BW EPD	WW EPD	YW EPD	TSI EPD	REA EPD	MARB EPD
105	12	-2.4	65	121	277	0.94	0.31

SCM MR SURTAIN N376

19

CHAROLAIS M1020589 - DOB. 3/21/25 - HERD# N376

sire. **SCC SURTAIN K28 (M1005970)**

dam. **K697 - SCM MISS ROYAL K697 (F1333627)**

BW	WW	ADJ WW	WW INDEX	YW	ADJ YW	YW INDEX	ADG
92	935	900	118.6	1245	1338	103	2.74
ADG INDEX	CE EPD	BW EPD	WW EPD	YW EPD	TSI EPD	REA EPD	MARB EPD
81.2	8.1	0.2	69	124	275	1.00	0.34

SCM MR SHERIFF N326

20

CHAROLAIS M1020793 - DOB. 3/19/25 - HERD# N326

sire. **SCM SHERIFF K106 (M1006286)**

dam. **J27 - SCM MISS OVERTIME J27 (F1373667)**

BW	WW	ADJ WW	WW INDEX	YW	ADJ YW	YW INDEX	ADG
89	840	783	103.1	1250	1364	105	3.63
ADG INDEX	CE EPD	BW EPD	WW EPD	YW EPD	TSI EPD	REA EPD	MARB EPD
107.6	13.1	-0.8	63	117	254	0.88	-0.04

SCM MR HARD KNOCKS N526

21

CHAROLAIS M1020599 - DOB. 3/28/25 - HERD# N526

sire. **SCM HARD KNOCKS E266 (M950558)**

dam. **F477 - SCM MISS DOUBLE TROUBLE F477 (F1307416)**

BW	WW	ADJ WW	WW INDEX	YW	ADJ YW	YW INDEX	ADG
90	830	791	104.2	1210	1329	102.3	3.36
ADG INDEX	CE EPD	BW EPD	WW EPD	YW EPD	TSI EPD	REA EPD	MARB EPD
99.6	9.5	-1.2	57	104	238	0.30	0.14

SCM MR SURTAIN N566

22

CHAROLAIS M1021157 - DOB. 3/31/25 - HERD# N566

sire. **SCC SURTAIN K28 (M1005970)**

dam. **K487 - SCM MISS ROYAL PAYRAISE K487 (F1333695)**

BW	WW	ADJ WW	WW INDEX	YW	ADJ YW	YW INDEX	ADG
80	620	632	83.3	1200	1453	111.9	5.13
ADG INDEX	CE EPD	BW EPD	WW EPD	YW EPD	TSI EPD	REA EPD	MARB EPD
152.1	12	-0.6	55	123	264	1.00	0.04

SCM MR OVERTIME N676

23

CHAROLAIS M1020611 - DOB. 4/6/25 - HERD# N676

sire. **SCM DOUBLE OVERTIME F1016 (M950559)**

dam. **C477 - SCM MISS PAYDAY C477 (F1333803)**

BW	WW	ADJ WW	WW INDEX	YW	ADJ YW	YW INDEX	ADG
89	710	702	92.5	1175	1361	104.8	4.12
ADG INDEX	CE EPD	BW EPD	WW EPD	YW EPD	TSI EPD	REA EPD	MARB EPD
122.2	13.1	-1.6	47	98			

SCM MR DECKER N396

24

CHAROLAIS M1020590 - DOB. 3/21/25 - HERD# N396

sire. **SCM DECKER K156 (M1006287)**

dam. **J67 - SCM MISS OVERTIME J67 (F1353946)**

BW	WW	ADJ WW	WW INDEX	YW	ADJ YW	YW INDEX	ADG
82	760	716	94.3	1235	1388	106.9	4.2
ADG INDEX	CE EPD	BW EPD	WW EPD	YW EPD	TSI EPD	REA EPD	MARB EPD
124.5	14.3	-3.0	46	99	253	0.42	0.17

SCM MR GS N466

25

CHAROLAIS M1020596 - DOB. 3/25/25 - HERD# N466

sire. **FINK 235 OF 3821 GS (EM977303)**

dam. **B367 - SCM MISS PAYCHECK B367 (F1307126)**

BW	WW	ADJ WW	WW INDEX	YW	ADJ YW	YW INDEX	ADG
95	900	858	113	1215	1304	100.4	2.79
ADG INDEX	CE EPD	BW EPD	WW EPD	YW EPD	TSI EPD	REA EPD	MARB EPD
82.7	6.8	1.1	68	118	243	0.26	0.03

SCC MR SHERIFF N18

26

CHAROLAIS M1020575 - DOB. 3/15/25 - HERD# N18

sire. **SCM SHERIFF K106 (M1006286)**

dam. **K9 - SCC KACEE K9 (F1333916)**

BW	WW	ADJ WW	WW INDEX	YW	ADJ YW	YW INDEX	ADG
84	850	805	106	1250	1371	105.6	3.54
ADG INDEX	CE EPD	BW EPD	WW EPD	YW EPD	TSI EPD	REA EPD	MARB EPD
105	14.6	-1.2	59	115	257	0.73	-0.01

SCM MR DECKER N141

27

CHAROLAIS M1020569 - DOB. 3/27/25 - HERD# N141

sire. **SCM DECKER K156 (M1006287)**

dam. **K142 - SCM MISS MO K142 (F1333913)**

BW	WW	ADJ WW	WW INDEX	YW	ADJ YW	YW INDEX	ADG
87	820	812	107	1195	1343	103.4	3.32
ADG INDEX	CE EPD	BW EPD	WW EPD	YW EPD	TSI EPD	REA EPD	MARB EPD
98.4	10.7	-1.3	52	95	246	0.49	0.04

SCC MR. HARD KNOCKS N28

28

CHAROLAIS M1020583 - DOB. 3/21/25 - HERD# N28

sire. **SCM HARD KNOCKS E266 (M950558)**

dam. **D627 - SCM DUTCHESS D627 (F1354515)**

BW	WW	ADJ WW	WW INDEX	YW	ADJ YW	YW INDEX	ADG
88	720	669	88.1	1215	1370	105.5	4.38
ADG INDEX	CE EPD	BW EPD	WW EPD	YW EPD	TSI EPD	REA EPD	MARB EPD
129.9	9.8	-1.5	47	101	230	0.20	-0.06

SCM MR SHERIFF N296

29

CHAROLAIS M1020791 - DOB. 3/18/25 - HERD# N296

sire. **SCM SHERIFF K106 (M1006286)**

dam. **J237 - SCM MISS KNOCKS J237 (F1373673)**

BW	WW	ADJ WW	WW INDEX	YW	ADJ YW	YW INDEX	ADG
84	790	735	96.8	1225	1351	104	3.85
ADG INDEX	CE EPD	BW EPD	WW EPD	YW EPD	TSI EPD	REA EPD	MARB EPD
114.2	12.2	-1.5	57	111	250	0.59	0.04

SCM MR SHERIFF N246

30

CHAROLAIS M1020581 - DOB. 3/16/25 - HERD# N246

sire. **SCM SHERIFF K106** (M1006286)

dam. **F267 - SCM MISS MO TROUBLE F267** (F1307405)

BW	WW	ADJ WW	WW INDEX	YW	ADJ YW	YW INDEX	ADG
94	860	782	103	1230	1305	100.5	3.27
ADG INDEX	CE EPD	BW EPD	WW EPD	YW EPD	TSI EPD	REA EPD	MARB EPD
97	10.8	-0.1	60	106	254	0.80	0.03



LOT 30

SCM MR LAKOTA N256

31

CHAROLAIS M1020790 - DOB. 3/16/25 - HERD# N256

sire. **BALAMORE LAKOTA 318L** (M1021234)

dam. **B727 - SCM MISS PAYDAY B727** (F1375480)

BW	WW	ADJ WW	WW INDEX	YW	ADJ YW	YW INDEX	ADG
89	790	731	96.3	1230	1353	104.2	3.89
ADG INDEX	CE EPD	BW EPD	WW EPD	YW EPD	TSI EPD	REA EPD	MARB EPD
115.3	7.1	-0.8	47	93	241	0.66	0.01

32

SCM MR KING JOE N166

CHAROLAIS M1020573 - DOB. 3/11/25 - HERD# N166

sire. **SCM KING JOE G306** (M968237)

dam. **E77 - SCM MISS DT E77** (F1307973)

BW	WW	ADJ WW	WW INDEX	YW	ADJ YW	YW INDEX	ADG
89	715	643	84.7	1245	1393	107.3	4.69
ADG INDEX	CE EPD	BW EPD	WW EPD	YW EPD	TSI EPD	REA EPD	MARB EPD
139.1	10.8	-1.3	41	98	237	0.48	0.04

SCM MR MARSHALL N36

33

CHAROLAIS M1020587 - DOB. 2/14/25 - HERD# N36

sire. **SCM MARSHALL L266** (M1005848)

dam. **L537 - SCM SUGAR L537** (F1362575)

BW	WW	ADJ WW	WW INDEX	YW	ADJ YW	YW INDEX	ADG
84	995	881	116.1	1335	1363	105	3.01
ADG INDEX	CE EPD	BW EPD	WW EPD	YW EPD	TSI EPD	REA EPD	MARB EPD
89.3	11.8	-1.3	74	120	243	0.54	0.00

This sale will be broadcast live on the internet.

DVAuction
Broadcasting Real-Time Auctions

Real time bidding & proxy bidding available.

ONLINE BIDDING:

Available Through DV Auction & Cattle USA

@dvauction.com - @cattleusa.com

Bidding will be available online via DV auction and cattleUSA. A video catalog of the bulls will also be available on DV auction weeks prior to sale day; We encourage you to go through these videos prior to sale day.

SCM MR DECKER K156

34

CHAROLAIS M1020789 - DOB. 3/17/25 - HERD# N266

sire. **SCM DECKER K156** (M1006287)

dam. **J107 - SCM J-LO J107** (F1373671)

BW	WW	ADJ WW	WW INDEX	YW	ADJ YW	YW INDEX	ADG
86	725	674	88.8	1220	1375	105.9	4.38
ADG INDEX	CE EPD	BW EPD	WW EPD	YW EPD	TSI EPD	REA EPD	MARB EPD
129.9	13.1	-2.5	44	98	250	0.71	0.01



LOT 34

SCM MR LAKOTA N31

35

CHAROLAIS M1020792 - DOB. 2/28/25 - HERD# N31

sire. **BALAMORE LAKOTA 318L (M1021234)**

dam. **B32 - SCM SHARON B32 (F1376079)**

BW	WW	ADJ WW	WW INDEX	YW	ADJ YW	YW INDEX	ADG
80	740	649	85.5	1280	1414	108.9	4.78
ADG INDEX	CE EPD	BW EPD	WW EPD	YW EPD	TSI EPD	REA EPD	MARB EPD
141.7	12.7	-2.6	45	100	243	0.48	-0.01

SCM MR DECKER N406

36

CHAROLAIS M1020591 - DOB. 3/21/25 - HERD# N406

sire. **SCM DECKER K156 (M1006287)**

dam. **K447 - SCM MISS OVERTIME K447 (F1333631)**

BW	WW	ADJ WW	WW INDEX	YW	ADJ YW	YW INDEX	ADG
80	790	767	101	1200	1348	103.8	3.63
ADG INDEX	CE EPD	BW EPD	WW EPD	YW EPD	TSI EPD	REA EPD	MARB EPD
107.6	13.2	-2.3	53	104	254	0.82	-0.01

SCM MR OVERTIME N121

37

CHAROLAIS M1020780 - DOB. 3/21/25 - HERD# N121

sire. **SCM DOUBLE OVERTIME F1016 (M950559)**

dam. **H92 - SCM MISS CHARLEY H92 (F1376265)**

BW	WW	ADJ WW	WW INDEX	YW	ADJ YW	YW INDEX	ADG
84	800	743	97.9	1200	1309	100.8	3.54
ADG INDEX	CE EPD	BW EPD	WW EPD	YW EPD	TSI EPD	REA EPD	MARB EPD
105	15.5	-3.1	54	96	242	0.50	0.00

SCM MR SURTAIN N496

38

CHAROLAIS M1020598 - DOB. 3/27/25 - HERD# N496

sire. **SCC SURTAIN K28 (M1005970)**

dam. **K517 - SCM MISS GAMUL K517 (F1333711)**

BW	WW	ADJ WW	WW INDEX	YW	ADJ YW	YW INDEX	ADG
87	805	797	105	1175	1320	101.6	3.27
ADG INDEX	CE EPD	BW EPD	WW EPD	YW EPD	TSI EPD	REA EPD	MARB EPD
97	9.7	-0.6	59	117	259	0.79	0.20



LOT 39

SCM MR HARD KNOCKS N506

40

CHAROLAIS M1020797 - DOB. 3/28/25 - HERD# N506

sire. **SCM HARD KNOCKS E266 (M950558)**

dam. **C457 - SCM MISS STETSON C457 (F1375483)**

BW	WW	ADJ WW	WW INDEX	YW	ADJ YW	YW INDEX	ADG
84	780	744	98	1165	1290	99.3	3.41
ADG INDEX	CE EPD	BW EPD	WW EPD	YW EPD	TSI EPD	REA EPD	MARB EPD
101.1	12.7	-2.3	50	94	237	0.56	-0.05

SCM MR MARSHALL N6

39

CHAROLAIS M1020800 - DOB. 2/10/25 - HERD# N6

sire. **SCM MARSHALL L266 (M1005848)**

dam. **L57 - SCM LONESOME DOVE L57 (F1375004)**

BW	WW	ADJ WW	WW INDEX	YW	ADJ YW	YW INDEX	ADG
80	930	819	107.9	1330	1385	106.6	3.54
ADG INDEX	CE EPD	BW EPD	WW EPD	YW EPD	TSI EPD	REA EPD	MARB EPD
105	13.2	-1.9	68	120	255	0.65	0.06

SCM MR DECKER N286

41

CHAROLAIS M1020584 - DOB. 3/17/25 - HERD# N286

sire. **SCM DECKER K156 (M1006287)**

dam. **K267 - SCM MISS ROYAL K267 (F1333697)**

BW	WW	ADJ WW	WW INDEX	YW	ADJ YW	YW INDEX	ADG
92	890	847	111.6	1200	1285	98.9	2.74
ADG INDEX	CE EPD	BW EPD	WW EPD	YW EPD	TSI EPD	REA EPD	MARB EPD
81.2	10.4	-1.3	62	103	253	0.68	-0.02

SCC MR GS N8

42

CHAROLAIS M1020619 - DOB. 3/11/25 - HERD# N8

sire. **FINK 235 OF 3821 GS (EM977303)**

dam. **H9 - SCC MISS LITTLE JOE (F1307353)**

BW	WW	ADJ WW	WW INDEX	YW	ADJ YW	YW INDEX	ADG
70	890	792	104.3	1220	1259	96.9	2.92
ADG INDEX	CE EPD	BW EPD	WW EPD	YW EPD	TSI EPD	REA EPD	MARB EPD
86.6	16	-3.4	62	111	269	0.56	0.22

SCM MR SHERIFF N146

43

CHAROLAIS M1020570 - DOB. 3/11/25 - HERD# N146

sire. **SCM SHERIFF K106 (M1006286)**

dam. **G167 - SCM MISS CROOKED JOE G167 (F1303690)**

BW	WW	ADJ WW	WW INDEX	YW	ADJ YW	YW INDEX	ADG
88	785	704	92.7	1220	1320	101.6	3.85
ADG INDEX	CE EPD	BW EPD	WW EPD	YW EPD	TSI EPD	REA EPD	MARB EPD
114.2	11.9	-0.7	55	110	237	0.54	-0.03

SCM MR HOLLYWOOD N11

44

CHAROLAIS M1020566 - DOB. 2/27/25 - HERD# N11

sire. **SCM HOLLYWOOD J86 (M968259)**

dam. **L122 - SCM CHARLAY L122 (F1354058)**

BW	WW	ADJ WW	WW INDEX	YW	ADJ YW	YW INDEX	ADG
105	885	828	109.1	1260	1359	104.6	3.32
ADG INDEX	CE EPD	BW EPD	WW EPD	YW EPD	TSI EPD	REA EPD	MARB EPD
98.4	5.9	2.0	64	115	247	0.78	0.00

SCM MR SHERIFF N556

45

CHAROLAIS M1020602 - DOB. 3/31/25 - HERD# N556

sire. **SCM SHERIFF K106 (M1006286)**

dam. **C327 - SCM MISS LUCKY DOUBLE C327 (F1302631)**

BW	WW	ADJ WW	WW INDEX	YW	ADJ YW	YW INDEX	ADG
90	795	766	100.9	1140	1254	96.6	3.05
ADG INDEX	CE EPD	BW EPD	WW EPD	YW EPD	TSI EPD	REA EPD	MARB EPD
90.4	11.7	-0.8	68	118	250	0.94	-0.11

SCM MR KING JOE N416

46

CHAROLAIS M1020796 - DOB. 3/21/25 - HERD# N416

sire. **SCM KING JOE G306 (M968237)**

dam. **C227 - SCM MISS CJ C227 (F1377824)**

BW	WW	ADJ WW	WW INDEX	YW	ADJ YW	YW INDEX	ADG
90	835	776	102.2	1174	1256	96.7	3
ADG INDEX	CE EPD	BW EPD	WW EPD	YW EPD	TSI EPD	REA EPD	MARB EPD
89	11.3	-1.0	55	101	225	0.44	-0.02

SCM MR OVERTIME N746

47

CHAROLAIS M1020616 - DOB. 4/21/25 - HERD# N746

sire. **SCM DOUBLE OVERTIME F1016 (M950559)**

dam. **F257 - SCM MISS CROOKED JOE F257 (F1307404)**

BW	WW	ADJ WW	WW INDEX	YW	ADJ YW	YW INDEX	ADG
91	745	783	103.1	1055	1221	94	2.74
ADG INDEX	CE EPD	BW EPD	WW EPD	YW EPD	TSI EPD	REA EPD	MARB EPD
81.2	13.4	-1.3	58	101			

SCM MR GS N736

48

CHAROLAIS M1020805 - DOB. 4/17/25 - HERD# N736

sire. **FINK 235 OF 3821 GS (EM977303)**

dam. **J577 - SCM MISS OVERTIME J577 (F1375478)**

BW	WW	ADJ WW	WW INDEX	YW	ADJ YW	YW INDEX	ADG
80	590	619	81.5	1065	1291	99.4	4.2
ADG INDEX	CE EPD	BW EPD	WW EPD	YW EPD	TSI EPD	REA EPD	MARB EPD
124.5	12.7	-2.1	46	100	273	0.72	0.12

SCM MR OVERTIME N386

49

CHAROLAIS M1020794 - DOB. 3/21/25 - HERD# N386

sire. **SCM DOUBLE OVERTIME F1016 (M950559)**

dam. **F917 - SCM MISS PAYRAISE F917 (F1376090)**

BW	WW	ADJ WW	WW INDEX	YW	ADJ YW	YW INDEX	ADG
86	735	683	90	1160	1285	98.9	3.76
ADG INDEX	CE EPD	BW EPD	WW EPD	YW EPD	TSI EPD	REA EPD	MARB EPD
111.5	15.2	-2.1	47	99	230	0.40	-0.03

SCM MR DECKER N206

50

CHAROLAIS M1020578 - DOB. 3/12/25 - HERD# N206

sire. **SCM DECKER K156 (M1006287)**

dam. **K107 - SCM MISS ROYAL REGAL K107 (F1333776)**

BW	WW	ADJ WW	WW INDEX	YW	ADJ YW	YW INDEX	ADG
88	855	801	105.5	1190	1275	98.2	2.96
ADG INDEX	CE EPD	BW EPD	WW EPD	YW EPD	TSI EPD	REA EPD	MARB EPD
87.8	11.2	-1.1	47	90	233	0.40	0.01

SCM MR HARD KNOCKS N151

51

CHAROLAIS M1020782 - DOB. 4/3/25 - HERD# N151

sire. **SCM HARD KNOCKS E266 (M950558)**

dam. **C192 - SCM CHARLENE C192 (F1376257)**

BW	WW	ADJ WW	WW INDEX	YW	ADJ YW	YW INDEX	ADG
86	740	722	95.1	1100	1232	94.9	3.19
ADG INDEX	CE EPD	BW EPD	WW EPD	YW EPD	TSI EPD	REA EPD	MARB EPD
94.6	10.1	-2.0	49	91			

SCM MR GS N766

52

CHAROLAIS M1020806 - DOB. 4/29/25 - HERD# N766

sire. **FINK 235 OF 3821 GS (EM977303)**

dam. **J517 - SCM MISS ROYAL J517 (F1373665)**

BW	WW	ADJ WW	WW INDEX	YW	ADJ YW	YW INDEX	ADG
95	640	706	93	1010	1229	94.6	3.27
ADG INDEX	CE EPD	BW EPD	WW EPD	YW EPD	TSI EPD	REA EPD	MARB EPD
97	7.4	0.5	57	109	272	0.75	0.12

SCM MR DECKER N336

53

CHAROLAIS M1020795 - DOB. 3/19/25 - HERD# N336

sire. **SCM DECKER K156 (M1006287)**

dam. **J127 - SCM MISS OVERTIME J127 (F1373662)**

BW	WW	ADJ WW	WW INDEX	YW	ADJ YW	YW INDEX	ADG
85	800	746	98.3	1150	1242	95.6	3.1
ADG INDEX	CE EPD	BW EPD	WW EPD	YW EPD	TSI EPD	REA EPD	MARB EPD
91.9	13.9	-2.7	49	94	235	0.56	-0.07

SCM MR DECKER N116

54

CHAROLAIS M1020567 - DOB. 3/5/25 - HERD# N116

sire. **SCM DECKER K156 (M1006287)**

dam. **K397 - SCM MISS DOUBLE DOUBLE K397 (F1333522)**

BW	WW	ADJ WW	WW INDEX	YW	ADJ YW	YW INDEX	ADG
85	825	756	99.6	1195	1279	98.5	3.27
ADG INDEX	CE EPD	BW EPD	WW EPD	YW EPD	TSI EPD	REA EPD	MARB EPD
97	14.4	-3.2	51	94	249	0.84	-0.07

SCM MR SURTAIN N726

55

CHAROLAIS M1020615 - DOB. 4/9/25 - HERD# N726

sire. **SCC SURTAIN K28 (M1005970)**

dam. **K77 - SCM MISS MILA K77 (F1333774)**

BW	WW	ADJ WW	WW INDEX	YW	ADJ YW	YW INDEX	ADG
85	815	848	111.7	1065	1202	92.6	2.21
ADG INDEX	CE EPD	BW EPD	WW EPD	YW EPD	TSI EPD	REA EPD	MARB EPD
65.5	11.2	-0.4	63	106	252	0.79	0.02

SCM MR GS N486

56

CHAROLAIS M1020597 - DOB. 3/27/25 - HERD# N486

sire. **FINK 235 OF 3821 GS (EM977303)**

dam. **A457 - SCM MISS STETSON A457 (F1303695)**

BW	WW	ADJ WW	WW INDEX	YW	ADJ YW	YW INDEX	ADG
98	675	657	86.5	1110	1273	98	3.85
ADG INDEX	CE EPD	BW EPD	WW EPD	YW EPD	TSI EPD	REA EPD	MARB EPD
114.2	7.9	1.1	54	108	243	0.35	0.08

SCM MR SURTAIN N131

57

CHAROLAIS M1020785 - DOB. 3/26/25 - HERD# N131

sire. **SCC SURTAIN K28 (M1005970)**

dam. **J62 - SCM MISS CHARLEY J62 (F1376101)**

BW	WW	ADJ WW	WW INDEX	YW	ADJ YW	YW INDEX	ADG
88	810	776	102.2	1110	1200	92.4	2.65
ADG INDEX	CE EPD	BW EPD	WW EPD	YW EPD	TSI EPD	REA EPD	MARB EPD
78.6	11	-1.4	61	98	236	0.67	-0.02

SCM MR OVERTIME N346

58

CHAROLAIS M1020585 - DOB. 3/19/25 - HERD# N346

sire. **SCM DOUBLE OVERTIME F1016 (M950559)**

dam. **D477 - SCM MISS PAYCHECK D477 (F1302771)**

BW	WW	ADJ WW	WW INDEX	YW	ADJ YW	YW INDEX	ADG
82	760	700	92.2	1130	1223	94.2	3.27
ADG INDEX	CE EPD	BW EPD	WW EPD	YW EPD	TSI EPD	REA EPD	MARB EPD
97	16.1	-2.5	51	96	228	0.53	-0.01

SCM MR SHERIFF N61

59

CHAROLAIS M1020801 - DOB. 3/7/25 - HERD# N61

sire. **SCM SHERIFF K106 (M1006286)**

dam. **F42 - SCM MISS CHARLEY F42 (F1376218)**

BW	WW	ADJ WW	WW INDEX	YW	ADJ YW	YW INDEX	ADG
88	865	762	100.4	1170	1194	91.9	2.7
ADG INDEX	CE EPD	BW EPD	WW EPD	YW EPD	TSI EPD	REA EPD	MARB EPD
80.1	11.3	-0.6	60	104	222	0.27	-0.09

SCM MR OVERTIME N706

60

CHAROLAIS M1020614 - DOB. 4/8/25 - HERD# N706

sire. **SCM DOUBLE OVERTIME F1016 (M950559)**

dam. **E457 - SCM MISS TROUBLE E457 (F1307551)**

BW	WW	ADJ WW	WW INDEX	YW	ADJ YW	YW INDEX	ADG
96	835	832	109.6	1060	1150	88.6	1.99
ADG INDEX	CE EPD	BW EPD	WW EPD	YW EPD	TSI EPD	REA EPD	MARB EPD
59	12.3	-0.6	59	88	241	0.66	0.01

SCM MR DECKER N536

61

CHAROLAIS M1020600 - DOB. 3/30/25 - HERD# N536

sire. **SCM DECKER K156 (M1006287)**

dam. **K627 - SCM MISS ROYAL K627 (F1333706)**

BW	WW	ADJ WW	WW INDEX	YW	ADJ YW	YW INDEX	ADG
87	720	725	95.5	1090	1248	96.1	3.27
ADG INDEX	CE EPD	BW EPD	WW EPD	YW EPD	TSI EPD	REA EPD	MARB EPD
97	11.5	-2.2	51	97	253	0.66	-0.02

SCM MR HARD KNOCKS E266

62

CHAROLAIS M1020811 - DOB. 3/15/25 - HERD# N91

sire. **SCM HARD KNOCKS E266 (M950558)**

dam. **H62 - SCM MISS CHARLEY H62 (F1376098)**

BW	WW	ADJ WW	WW INDEX	YW	ADJ YW	YW INDEX	ADG
85	725	659	86.8	1140	1246	95.9	3.67
ADG INDEX	CE EPD	BW EPD	WW EPD	YW EPD	TSI EPD	REA EPD	MARB EPD
108.8	10.8	-2.0	46	87	246	0.50	0.14

SCM MR OVERTIME N176

63

CHAROLAIS M1020574 - DOB. 3/11/25 - HERD# N176

sire. **SCM DOUBLE OVERTIME F1016 (M950559)**

dam. **C357 - SCM MISS CKD JOE C357 (F1303703)**

BW	WW	ADJ WW	WW INDEX	YW	ADJ YW	YW INDEX	ADG
87	680	610	80.4	1150	1276	98.3	4.16
ADG INDEX	CE EPD	BW EPD	WW EPD	YW EPD	TSI EPD	REA EPD	MARB EPD
123.4	13.7	-2.2	40	90	229	0.46	-0.03

SCM MR OVERTIME N196

64

CHAROLAIS M1020577 - DOB. 3/12/25 - HERD# N196

sire. **SCM DOUBLE OVERTIME F1016 (M950559)**

dam. **F97 - SCM MISS MO F97 (F1333801)**

BW	WW	ADJ WW	WW INDEX	YW	ADJ YW	YW INDEX	ADG
93	870	780	102.7	1140	1162	89.5	2.39
ADG INDEX	CE EPD	BW EPD	WW EPD	YW EPD	TSI EPD	REA EPD	MARB EPD
70.9	11.6	-0.8	54	89	232	0.55	-0.01



LOT 64

SCM MR OVERTIME N586

65

CHAROLAIS M1020603 - DOB. 4/1/25 - HERD# N586

sire. **SCM DOUBLE OVERTIME F1016 (M950559)**

dam. **B407 - SCM MISS PAYCHECK B407 (F1307128)**

BW	WW	ADJ WW	WW INDEX	YW	ADJ YW	YW INDEX	ADG
85	725	712	93.8	1065	1194	91.9	3.01
ADG INDEX	CE EPD	BW EPD	WW EPD	YW EPD	TSI EPD	REA EPD	MARB EPD
89.3	14.2	-2.0	51	93	218	0.02	0.09

SCM MR SHERIFF N236

66

CHAROLAIS M1020580 - DOB. 3/15/25 - HERD# N236

sire. **SCM SHERIFF K106 (M1006286)**

dam. **H397 - SCM MISS PAYRAISE H397 (F1307375)**

BW	WW	ADJ WW	WW INDEX	YW	ADJ YW	YW INDEX	ADG
89	740	673	88.7	1120	1211	93.2	3.36
ADG INDEX	CE EPD	BW EPD	WW EPD	YW EPD	TSI EPD	REA EPD	MARB EPD
99.6	12.3	-0.8	50	99	228	0.47	-0.07

SCM MR MARSHALL N76

67

CHAROLAIS M1021171 - DOB. 3/3/25 - HERD# N76

sire. **SCM MARSHALL L266 (M1005848)**

dam. **L727 - SCM MISS PRIME TIME L727 (F1379750)**

BW	WW	ADJ WW	WW INDEX	YW	ADJ YW	YW INDEX	ADG
82	900	847	111.6	1160	1215	93.6	2.3
ADG INDEX	CE EPD	BW EPD	WW EPD	YW EPD	TSI EPD	REA EPD	MARB EPD
68.2	9.5	-1.4	64	100	227	0.84	-0.13

SCM MR HARD KNOCKS

68

CHAROLAIS M1020588 - DOB. 3/19/25 - HERD# N366

sire. **SCM HARD KNOCKS E266 (M950558)**

dam. **F87 - SCM MISS ROYAL F87 (F1333787)**

BW	WW	ADJ WW	WW INDEX	YW	ADJ YW	YW INDEX	ADG
90	755	696	91.7	1105	1192	91.8	3.1
ADG INDEX	CE EPD	BW EPD	WW EPD	YW EPD	TSI EPD	REA EPD	MARB EPD
91.9	11.1	-1.9	48	92	239	0.43	0.03

SCM MR DECKER N216

69

CHAROLAIS M1020787 - DOB. 3/13/25 - HERD# N216

sire. **SCM DECKER K156 (M1006287)**

dam. **J247 - SCM MISS ROYAL (F1373672)**

BW	WW	ADJ WW	WW INDEX	YW	ADJ YW	YW INDEX	ADG
84	800	732	96.4	1120	1185	91.2	2.83
ADG INDEX	CE EPD	BW EPD	WW EPD	YW EPD	TSI EPD	REA EPD	MARB EPD
83.9	14.2	-3.0	47	90	244	0.60	0.08

SCM MR HOLLYWOOD N126

70

CHAROLAIS M1020568 - DOB. 3/8/25 - HERD# N126

sire. **SCM HOLLYWOOD J86 (M968259)**

dam. **L187 - SCM JO JO L187 (F1354061)**

BW	WW	ADJ WW	WW INDEX	YW	ADJ YW	YW INDEX	ADG
83	675	667	87.9	1135	1318	101.5	4.07
ADG INDEX	CE EPD	BW EPD	WW EPD	YW EPD	TSI EPD	REA EPD	MARB EPD
120.7	12.3	-1.0	50	104	243	0.78	-0.03

SCM MR SHERIFF

71

CHAROLAIS M1020605 - DOB. 4/4/25 - HERD# N606

sire. **SCM SHERIFF K106 (M1006286)**

dam. **E447 - SCM MISS STETSON E447 (F1307549)**

BW	WW	ADJ WW	WW INDEX	YW	ADJ YW	YW INDEX	ADG
93	565	555	73.1	1040	1227	94.5	4.2
ADG INDEX	CE EPD	BW EPD	WW EPD	YW EPD	TSI EPD	REA EPD	MARB EPD
124.5	11.7	-0.3	40	95			

SCM MR KING JOE N446

72

CHAROLAIS M1020593 - DOB. 3/24/25 - HERD# N446

sire. **SCM KING JOE G306 (M968237)**

dam. **C377 - SCM MISS CJ C377 (F1307522)**

BW	WW	ADJ WW	WW INDEX	YW	ADJ YW	YW INDEX	ADG
87	710	667	87.9	1070	1177	90.6	3.19
ADG INDEX	CE EPD	BW EPD	WW EPD	YW EPD	TSI EPD	REA EPD	MARB EPD
94.6	13.3	-2.2	44	87	215	0.10	-0.01

SCM MR GS N596

73

CHAROLAIS M1020604 - DOB. 4/2/25 - HERD# N596

sire. **FINK 235 OF 3821 GS (EM977303)**

dam. **H457 - SCM MISS MARCH H457 (F1367888)**

BW	WW	ADJ WW	WW INDEX	YW	ADJ YW	YW INDEX	ADG
91	710	690	90.9	1030	1143	88	2.83
ADG INDEX	CE EPD	BW EPD	WW EPD	YW EPD	TSI EPD	REA EPD	MARB EPD
83.9	9.8	-0.5	55	98	244	0.50	0.06

SCM MR OVERTIME N516

74

CHAROLAIS M1020804 - DOB. 3/28/25 - HERD# N516

sire. **SCM DOUBLE OVERTIME F1016 (M950559)**

dam. **F677 - SCM MISS CJ F677 (F1375689)**

BW	WW	ADJ WW	WW INDEX	YW	ADJ YW	YW INDEX	ADG
90	725	692	91.2	1035	1130	87	2.74
ADG INDEX	CE EPD	BW EPD	WW EPD	YW EPD	TSI EPD	REA EPD	MARB EPD
81.2	13.4	-1.7	49	90	220	0.58	-0.05

SCM MR DECKER N356

75

CHAROLAIS M1020586 - DOB. 3/19/25 - HERD# N356

sire. **SCM DECKER K156 (M1006287)**

dam. **K597 - SCM MISS ROYAL K597 (F1333707)**

BW	WW	ADJ WW	WW INDEX	YW	ADJ YW	YW INDEX	ADG
87	760	735	96.8	1065	1167	89.9	2.7
ADG INDEX	CE EPD	BW EPD	WW EPD	YW EPD	TSI EPD	REA EPD	MARB EPD
80.1	9.4	-1.4	50	91	234	0.65	-0.10

SCM MR SHERIFF N656

76

CHAROLAIS M1020610 - DOB. 4/6/25 - HERD# N656

sire. **SCM SHERIFF K106 (M1006286)**

dam. **K897 - SCM MISS ROCK SOLID K897 (F1333798)**

BW	WW	ADJ WW	WW INDEX	YW	ADJ YW	YW INDEX	ADG
88	695	721	95	1005	1159	89.2	2.74
ADG INDEX	CE EPD	BW EPD	WW EPD	YW EPD	TSI EPD	REA EPD	MARB EPD
81.2	14.7	-1.3	58	102	256	0.86	0.02

SCM MR MARSHALL N26

77

CHAROLAIS M1020582 - DOB. 2/12/25 - HERD# N26

sire. **SCM MARSHALL L266 (M1005848)**

dam. **L667 - SCM CRYSTAL L667 (F1363277)**

BW	WW	ADJ WW	WW INDEX	YW	ADJ YW	YW INDEX	ADG
82	850	761	100.2	1170	1214	93.5	2.83
ADG INDEX	CE EPD	BW EPD	WW EPD	YW EPD	TSI EPD	REA EPD	MARB EPD
83.9	13.2	-1.7	62	104	226	0.41	-0.06

SCM MR DECKER N226

78

CHAROLAIS M1020579 - DOB. 3/14/25 - HERD# N226

sire. **SCM DECKER K156 (M1006287)**

dam. **K7 - SCM MISS JO COOL K7 (F1333717)**

BW	WW	ADJ WW	WW INDEX	YW	ADJ YW	YW INDEX	ADG
79	685	654	86.2	1070	1200	92.4	3.41
ADG INDEX	CE EPD	BW EPD	WW EPD	YW EPD	TSI EPD	REA EPD	MARB EPD
101.1	14.2	-4.1	39	84	244	0.72	-0.01

SCM MR KING JOE N136

79

CHAROLAIS M1020781 - DOB. 3/11/25 - HERD# N136

sire. **SCM KING JOE G306 (M968237)**

dam. **F197 - SCM MISS MO F197 (F1375494)**

BW	WW	ADJ WW	WW INDEX	YW	ADJ YW	YW INDEX	ADG
90	760	681	89.7	1080	1134	87.3	2.83
ADG INDEX	CE EPD	BW EPD	WW EPD	YW EPD	TSI EPD	REA EPD	MARB EPD
83.9	10.7	-1.1	45	81	227	0.52	0.01

SCM MR HOLLYWOOD N46

80

CHAROLAIS M1020595 - DOB. 2/18/25 - HERD# N46

sire. **SCM HOLLYWOOD J86 (M968259)**

dam. **L237 - SCM BAILEY L237 (F1354064)**

BW	WW	ADJ WW	WW INDEX	YW	ADJ YW	YW INDEX	ADG
86	780	719	94.7	1110	1186	91.3	2.92
ADG INDEX	CE EPD	BW EPD	WW EPD	YW EPD	TSI EPD	REA EPD	MARB EPD
86.6	12.4	-1.3	52	97	219	0.26	-0.03

N81

81

CHAROLAIS - DOB. 3/10/25 - HERD# N81

sire. **SCM HARD KNOCKS E266** (M950558)

dam. **C2**

BW	WW	ADJ WW	WW INDEX	YW	ADJ YW	YW INDEX	ADG
92	720	640		1005	1043		2.52
ADG INDEX	CE EPD	BW EPD	WW EPD	YW EPD	TSI EPD	REA EPD	MARB EPD

SCM MR SHERIFF M816

82

CHAROLAIS M1021170 - DOB. 5/28/24 - HERD# M816

sire. **SCM SHERIFF K106** (M1006286)

dam. **H447 - SCM MISS PAYRAISE H447** (F1376035)

BW	WW	ADJ WW	WW INDEX	YW	ADJ YW	YW INDEX	ADG
90	725	927	102.5	1030	1337	103.5	2.56
ADG INDEX	CE EPD	BW EPD	WW EPD	YW EPD	TSI EPD	REA EPD	MARB EPD
105.7	11.5	-0.1	62	118			

SCM MR SHERIFF M806

83

CHAROLAIS M1020819 - DOB. 5/25/24 - HERD# M806

sire. **SCM SHERIFF K106** (M1006286)

dam. **F247 - SCM MISS LITTLE JOE F247** (F1307401)

BW	WW	ADJ WW	WW INDEX	YW	ADJ YW	YW INDEX	ADG
85	675	838	92.7	1030	1315	101.8	2.98
ADG INDEX	CE EPD	BW EPD	WW EPD	YW EPD	TSI EPD	REA EPD	MARB EPD
123	12.5	-0.9	57	112			

SCM MR SHERIFF M746

84

CHAROLAIS M1020816 - DOB. 5/10/24 - HERD# M746

sire. **SCM SHERIFF K106** (M1006286)

dam. **F717 - SCM MISS CJ F717** (F1333793)

BW	WW	ADJ WW	WW INDEX	YW	ADJ YW	YW INDEX	ADG
90	790	909	100.6	1075	1291	100	2.39
ADG INDEX	CE EPD	BW EPD	WW EPD	YW EPD	TSI EPD	REA EPD	MARB EPD
98.7	10.8	-0.2	62	114			

SCM MR SHERIFF M58

85

CHAROLAIS M1020812 - DOB. 5/1/24 - HERD# M58

sire. **SCM SHERIFF K106** (M1006286)

dam. **H19 - SCC MISS ROYAL H19** (F1307351)

BW	WW	ADJ WW	WW INDEX	YW	ADJ YW	YW INDEX	ADG
84	815	908	100.4	1105	1298	100.5	2.44
ADG INDEX	CE EPD	BW EPD	WW EPD	YW EPD	TSI EPD	REA EPD	MARB EPD
100.7	12	-1.3	62	117	242	0.58	-0.04

SCM MR HOLLYWOOD M706

86

CHAROLAIS M1020814 - DOB. 5/2/24 - HERD# M706

sire. **SCM HOLLYWOOD J86** (M968259)

dam. **K407 - SCM MISS ROYAL K407** (F1333714)

BW	WW	ADJ WW	WW INDEX	YW	ADJ YW	YW INDEX	ADG
87	775	924	102.2	1090	1348	104.4	2.65
ADG INDEX	CE EPD	BW EPD	WW EPD	YW EPD	TSI EPD	REA EPD	MARB EPD
109.4	11.7	-1.0	61	113	270	1.09	-0.03

SCM MR SHERIFF M826

87

CHAROLAIS M1021169 - DOB. 5/30/24 - HERD# M826

sire. **SCM SHERIFF K106** (M1006286)

dam. **J517 - SCM MISS ROYAL J517** (F1373665)

BW	WW	ADJ WW	WW INDEX	YW	ADJ YW	YW INDEX	ADG
82	710	944	104.4	985	1314	101.7	2.31
ADG INDEX	CE EPD	BW EPD	WW EPD	YW EPD	TSI EPD	REA EPD	MARB EPD
95.4	12.7	-1.5	65	118	253	0.75	-0.03

SCC MR SHERIFF M68

88

CHAROLAIS M1020813 - DOB. 5/1/24 - HERD# M68

sire. **SCM SHERIFF K106** (M1006286)

dam. **H9 - SCC MISS LITTLE JOE** (F1307353)

BW	WW	ADJ WW	WW INDEX	YW	ADJ YW	YW INDEX	ADG
89	800	892	98.7	1085	1274	98.6	2.39
ADG INDEX	CE EPD	BW EPD	WW EPD	YW EPD	TSI EPD	REA EPD	MARB EPD
98.7	12.1	0.0	59	110			

SCM MR OVERTIME M716

89

CHAROLAIS M1020815 - DOB. 5/8/24 - HERD# M716

sire. **SCM DOUBLE OVERTIME F1016** (M950559)

dam. **D77 - SCM MISS SOVEREIGN D77** (F1308611)

BW	WW	ADJ WW	WW INDEX	YW	ADJ YW	YW INDEX	ADG
91	800	912	100.9	1045	1242	96.2	2.06
ADG INDEX	CE EPD	BW EPD	WW EPD	YW EPD	TSI EPD	REA EPD	MARB EPD
85	12.1	-1.6	52	95	233	0.48	0.00

SCM MR HOLLYWOOD M776

90

CHAROLAIS M1020817 - DOB. 5/10/24 - HERD# M776

sire. **SCM HOLLYWOOD J86** (M968259)

dam. **F277 - SCM MISS PAYRAISE F277** (F1307406)

BW	WW	ADJ WW	WW INDEX	YW	ADJ YW	YW INDEX	ADG
80	765	882	97.6	1005	1205	93.3	2.02
ADG INDEX	CE EPD	BW EPD	WW EPD	YW EPD	TSI EPD	REA EPD	MARB EPD
83.4	14	-2.5	50	97			

40TH Annual **BULL SALE**

FRIDAY, APRIL 3, 2026 - 12:30 MST

SALE DISCOUNTS:

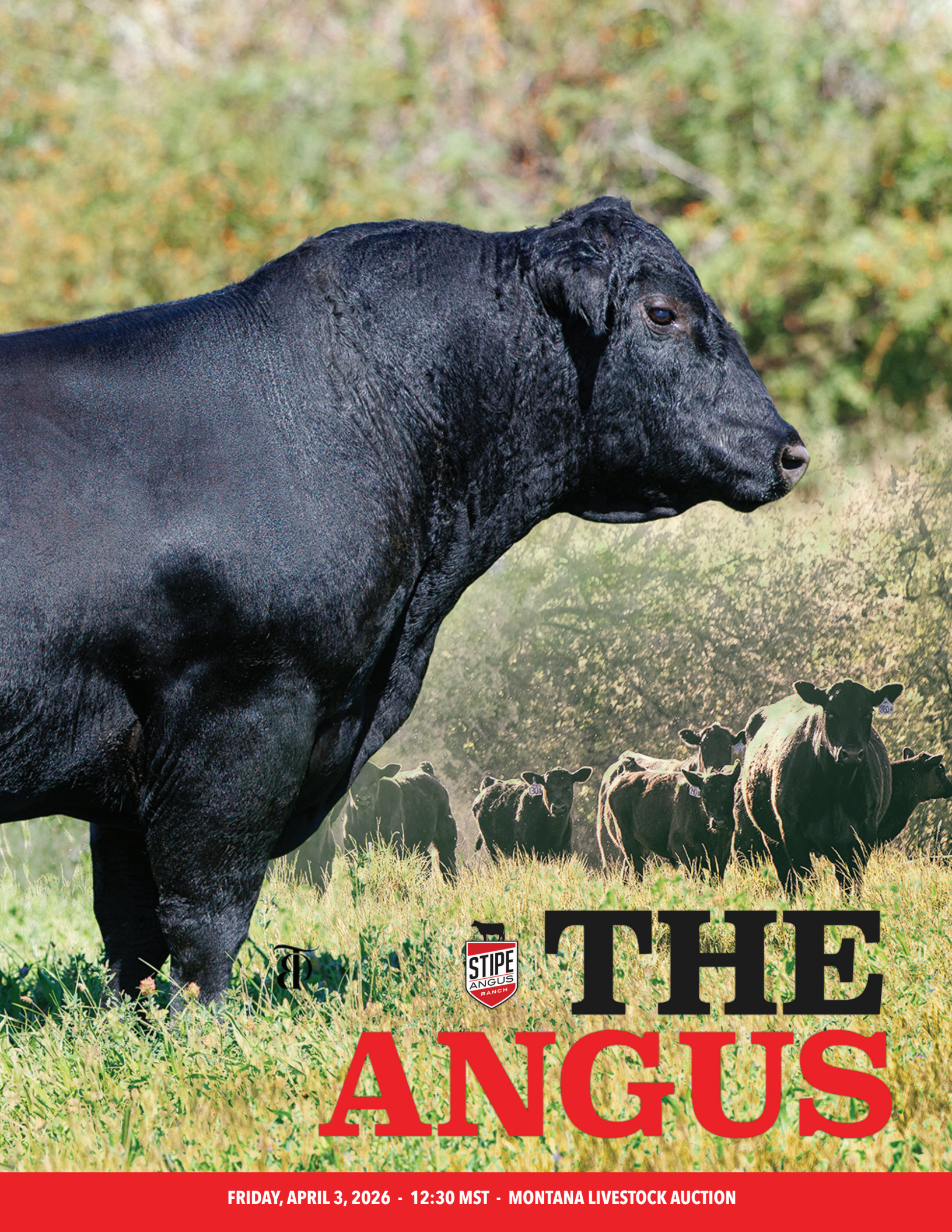
As always, we offer a **\$100 DISCOUNT** for those who take their bulls home the day of sale.

SALE DAY LOCATION:

MONTANA LIVESTOCK AUCTION
100 CATTLE DRIVE RAMSAY, MT 59748

SALE DAY PHONES:

Marv Stipe: 406-240-4150
Chico Stipe: 406-274-5510
Laramie Stipe: 541-212-5253



STIPE



THE ANGUS

FRIDAY, APRIL 3, 2026 - 12:30 MST - MONTANA LIVESTOCK AUCTION

STIPE DENSITY 516N

201

ANGUS +*21188286 - DOB. 2/6/25 - TATTOO 516N

SAV 8180 Traveler 004

DHD Traveler 6807

SAV 004 Density 4336



Black Grove Pearl 844

SAV May 7238

CT Irvington 91 340 3343

BW	ADJ WW	WW RATIO	ADJ YW	YW RATIO	ADG
70	649	101	1173	100	3.15
CEW	BW	WW	YW	SM	SW
13	0.5	55	99	53	31

HEIFER SAFE

BLACK GROVE PEARL 844
Dam of Lot 201, 202 & 203



LOT 201

STIPE DENSITY 520N

202

ANGUS +*21188288 - DOB. 2/9/25 - TATTOO 520N

SAV 8180 Traveler 004

DHD Traveler 6807

SAV 004 Density 4336



Black Grove Pearl 844

SAV May 7238

CT Irvington 91 340 3343

BW	ADJ WW	WW RATIO	ADJ YW	YW RATIO	ADG
74	688	108	1158	99	2.79
CEW	BW	WW	YW	SM	SW
8	1.3	47	76	53	31

LARGE HEIFER/COW SAFE



LOT 202

STIPE DENSITY 524N

203

ANGUS +*21323693 - DOB. 2/12/25 - TATTOO 524N

SAV 8180 Traveler 004

DHD Traveler 6807

SAV 004 Density 4336



Black Grove Pearl 844

SAV May 7238

CT Irvington 91 340 3343

BW	ADJ WW	WW RATIO	ADJ YW	YW RATIO	ADG
74	708	111	1269	108	3.39
CEW	BW	WW	YW	SM	SW
8	0.5	41	82	53	31

LARGE HEIFER/COW SAFE



LOT 203

STIPE SITKA 561N

204

ANGUS *21280215 - DOB. 4/7/25 - TATTOO 561N



OCC Juneau 807J

SAV Renown 3439

NSR Sitka 108

X Stipe O Lass 230K

Bohi Abigale 6014

Basin O Lass 1759

BW	ADJ WW	WW RATIO	ADJ YW	YW RATIO	ADG
80	742	116	1386	118	3.89
CED	BW	WW	YW	\$M	\$W
3	3.1	83	145	71	65

COW SAFE

STIPE SITKA 560N

205

ANGUS *21280222 - DOB. 4/3/25 - TATTOO 560N



OCC Juneau 807J

SydGen CC&7

NSR Sitka 108

X Basin O Lass 1759

Bohi Abigale 6014

21AR O Lass 7017

BW	ADJ WW	WW RATIO	ADJ YW	YW RATIO	ADG
72	696	109	1240	106	3.29
CED	BW	WW	YW	\$M	\$W
7	1.6	66	116	71	65

LARGE HEIFER/COW SAFE

STIPE O LASS 230K
Dam of Lot 205
Grandam of Lot 204

STIPE SITKA 546N

206

ANGUS *21518025 - DOB. 3/8/25 - TATTOO 546N



OCC Juneau 807J

Maymont Emulate 4392

NSR Sitka 108

X CG Barbie 6215 930 4392

Bohi Abigale 6014

CG Barbie 930 430

BW	ADJ WW	WW RATIO	ADJ YW	YW RATIO	ADG
68	633	99	1155	99	3.23
CED	BW	WW	YW	\$M	\$W
9	1.5	1+48	1+81	71	65

HEIFER SAFE

LOT 206

STIPE SITKA 505N

207

ANGUS *21323697 - DOB. 1/29/25 - TATTOO 505N

OCC Juneau 807J

Brooking Revival 0074

NSR Sitka 108

~~X~~ Stipe Pearl 315L

Bohi Abigale 6014

Black Grove Pearl 844

BW	ADJ WW	WW RATIO	ADJ YW	YW RATIO	ADG
74	582	91	1130	97	3.33
CED	BW	WW	YW	\$M	\$W
6	0.1	50	98	71	65

COW SAFE



LOT 207

STIPE AFFINITY 527N

208

ANGUS *21280220 - DOB. 2/23/25 - TATTOO 527N

Square B Atlantis 8060

Bruin Torque 5261

Stipe Affinity 220K

~~X~~ Stipe Envious Erica 325L

BeverlyHills Soo Rosebud714T

High Valley 1H4 of 8N55

BW	ADJ WW	WW RATIO	ADJ YW	YW RATIO	ADG
78	673	105	1124	96	2.81
CED	BW	WW	YW	\$M	\$W
2	1.8	51	93	68	52

COW SAFE



LOT 208

STIPE AFFINITY 558N

209

ANGUS *21280216 - DOB. 3/25/25 - TATTOO 558N

Square B Atlantis 8060

Reich Ripper 37B

Stipe Affinity 220K

~~X~~ Stipe Elsie 204K

BeverlyHills Soo Rosebud714T

Stipe Elsie 540H

BW	ADJ WW	WW RATIO	ADJ YW	YW RATIO	ADG
80	690	108	1117	95	2.78
CED	BW	WW	YW	\$M	\$W
4	1.7	44	80	68	52

COW SAFE



LOT 209



Laramie Stipe: 541-212-5253

STIPE AFFINITY 553N

210

ANGUS *21280219 - DOB. 3/24/25 - TATTOO 553N

Square B Atlantis 8060

OCC Accolade 825A

Stipe Affinity 220K

~~X~~ Stipe Blackcap 331L

BeverlyHills Soo Rosebud714T

Westwind Brigitte DJH 132

BW	ADJ WW	WW RATIO	ADJ YW	YW RATIO	ADG
70	623	97	1147	98	3.23
CED	BW	WW	YW	\$M	\$W
9	0.7	50	96	68	52

LARGE HEIFER/COW SAFE



N S R SITKA 108

**REF
SIRE**

Angus - BD. 2/15/21 **+*20210880**

O C C EMBLAZON 854E
O C C JUNEAU 807J
 O C C DIXIE ERICA 903E
 SITZ TRAVELER 8180
BOHI ABIGALE 6014
 S A V ABIGALE 6062

CED	BW	WW	YW	SM	SW
5	1.1	63	114	71	65



STIPE AFFINITY 220K

**REF
SIRE**

Angus - BD. 2/4/22 **+*20316409**

S A V RAINFALL 6846
SQUARE B ATLANTIS 8060
 ELBANNA OF CONANGA 1209
 S A V 004 DENSITY 4336
BEVERLYHILLS SOO ROSEBUD714T
 PRAIRIELANE 9001 ROSEBUD 201

CED	BW	WW	YW	SM	SW
3	1.2	43	75	68	52



S A V 004 DENSITY 4336

**REF
SIRE**

Angus - BD. 3/25/04 **#+14725035**

SITZ TRAVELER 8180
S A V 8180 TRAVELER 004
 BOYD FOREVER LADY 8003
 LEACHMAN RIGHTTIME
S A V MAY 7238
 S A R PROSPECTOR MAY 9124

CED	BW	WW	YW	SM	SW
6	3.8	50	88	53	31





**CONGRATULATIONS TO
JAZZIE RAGEN**

Grand Champion Steer
Broadwater County Fair

*Steer sired by a Stipe
Charolais sire.*



recent customer success



HIDEAWAY ALLY 320

Daughter of SCM Double Overtime sold for \$9,750
in Dave Dillabo's Made West Female Sale



4TH *Annual*
BULL SALE

THANK YOU TO OUR CUSTOMERS FOR 40 WONDERFUL YEARS AND COUNTING.



Charolais

44577 SCHOOLHOUSE LN
CHARLO, MT 59824

proudly designed by SCI 
402.680.1254 - stephaniecronin.com



40TH Annual
BULL
SALE

FRIDAY, APRIL 3, 2026 - 12:30 MST - MONTANA LIVESTOCK AUCTION