

Inaugural
Online Bull Sale

Lost Creek
Red Angus

Molt, MT 59057



2026
March 2nd

www.lostcreekreds.com

Welcome

Welcome to our Inaugural Online Bull Sale. This is truly exciting for us to bring a bull sale to you this year. We couldn't do this without you, our customers. We are incredibly thankful to our customers past, present & future for showing interest in our program.

We believe good cows are the heart of any program. As well as going back to the basics and raising cattle that are phenotypically correct. Who doesn't like cattle you can have in the front pasture? They must also have great maternal instincts with good udders and be easy fleshing with good feet. We are a dry land operation, and our cows must convert whatever mother nature makes their pasture into and raise a good calf and maintain themselves. Our goal is to improve our herd every breeding season, in turn helping our customers to improve theirs as well.

Our bulls are developed here on the ranch, which helps us to evaluate them daily for growth, structure, health and docility. They are fed a protein pellet ration with free choice hay and mineral. All bulls have parentage DNA completed and on file at Red Angus Association of America. Bulls will have fertility testing done by Dr. Lacey Fahrmeier prior to the sale.

Being a family run operation there are times that we run out of hands. We would like to thank our friends who are family for helping lend a hand throughout the year.

As always, the gates are open, come walk through the boys or look at the mama cows that they are out of. Please feel free to contact us with any questions, we are happy to answer them.

Once again thank you and God's blessing,

Terry, Christina, Ethan, Alyssa & Tommy

Sale Info

Contact Info

Terry & Christina Pierce
406-663-2251
lostcreekreds@yahoo.com

Ethan & Alyssa Herman
406-839-0901
alyssahahn1@gmail.com

Terms & Guarantees

We guarantee these bulls for fertility and soundness for the first breeding season. All bulls have been parentage tested. A volume discount of 5% off each bull with a purchase of 4 or more bulls. 1/2 semen interest on each bull will be retained. Free delivery within 300 miles of the Ranch.

View & Bid Online

DVAuction, Jay Rost
(406) 978-2124

Live bidding will be available online at www.DVAuction.com.

Please register early so you are approved as a bidder in plenty of time before the sale.

Insurance

Zach McKinley
(406) 799-2664

Feed & Development

The bulls are developed on 10lbs of a 15% protein pellet with grass and sainfoin hay. They are fed enough to develop them properly without over conditioning them so they are ready to go to work. Bulls will be wintered free of charge until April.

Directions to the Ranch

100 CASH ROAD MOLT, MONTANA

We are located 10 miles northwest of Molt. As you come into Molt turn right onto Pony Lane for 7 miles until you reach Downer Rd, take another right onto Downer Rd for 2 miles, then take a left onto Cash Rd for 1 mile to the ranch.

Please join us for an Open House and lunch on Sale Day at 12:00pm



Online Auction Info

DVAuction

www.dvauction.com

Watch & Bid online for FREE!

Can't make the sale?

Let DVAuction bring the sale to you!

Busy during the sale?

Let DVAuction represent your bid!

Visit www.dvauction.com and Register!

It's as easy as 1, 2, 3...

1. Create an account at www.dvauction.com under the "create new account" tab
2. Apply for bidding by clicking "apply for bidding" in the upper left corner of your screen, at least 24 hours prior to the auction
3. Tune into the sale and make your purchases!

For General Questions Please Contact Our Office:
(402) 316-5460 or support@dvauction.com

*High Speed Internet Access Required

RED ANGUS MARKETING PROGRAMS

Angus Access is the first step in differentiating your cattle to buyers, feedlots and packers.

Experience industry-leading return on investment for just the cost of an EID tag – with no enrollment fees when purchased through RAAA. The RAAA Marketing Team offers assistance to Red Angus bull customers at no charge.

Visit RedAngus.org for contact information.



processverified.usda.gov



GENETICS • SOURCE • AGE

- Traceability to at least 50% registered Angus bloodlines
- Source verified to ranch of origin
- Group age verified



processverified.usda.gov



SOURCE • AGE

- Source verified to ranch of origin
- Group age verified

RedAngus.org
940-477-4593

RED ANGUS
RANCH TESTED. RANCHER TRUSTED.

LOST CRK *Intensity* 1900

02/03/2021 REG:4452525 CAT:1A

BIEBER DRIVEN C540
STRA RELENTLESS
 STRA CHEREBAL 305

WEBER REFORM 618
VF MS CHETA GIRL 9007-144B
 SIX MILE CHETA GIRL 144B

	CED	BW	WW	YW	ADG	DMI	MILK	ME	HPG	
EPD	12	-2.3	56	89	0.21	0.55	31	-15	15	
PR%	54	40	84	82	76	33	14	3	12	
CEM	STAY	MARB	YG	CW	REA	FAT	ProS	HB	GM	
	7	19	0.86	0.09	8	-0.15	0.02	172	107	65
	40	11	6	65	87	89	58	3	1	29



C-T *Reputation* 0094

02/08/2020 REG:4296453 CAT:1A

BROWN JYJ REDEMPTION Y1334
C-T RED ROCK 5033
 C-T VERDI 1030

PIE ONE OF A KIND 352
C-T LINSEY 8119
 C-T LINSEY 0964

	CED	BW	WW	YW	ADG	DMI	MILK	ME	HPG	
EPD	13	-3.6	89	135	0.29	1.07	39	10	7	
PR%	44	21	5	10	27	78	1	78	97	
CEM	STAY	MARB	YG	CW	REA	FAT	ProS	HB	GM	
	6	13	0.54	-0.04	29	0.32	-0.01	85	28	57
	59	71	33	16	31	21	15	69	82	39



NIO *Red Blood* 3049

01/05/2023 REG:4841784 CAT:1A

ROJAS RIOJA 6052
DUFF RED BLOOD 18114
 DUFF JUANADA 972K 15124

RED U2 NOVA 627F
NIO RUBY ROSE 1133
 RED SIX MILE RUBY ROSE 168C

	CED	BW	WW	YW	ADG	DMI	MILK	ME	HPG	
EPD	15	-2.2	62	86	0.15	0.57	27	-4	10	
PR%	34	42	69	86	95	35	38	15	73	
CEM	STAY	MARB	YG	CW	REA	FAT	ProS	HB	GM	
	8	19	0.40	0.01	4	-0.08	0.00	49	30	19
	38	91	56	30	92	81	27	94	80	93



LOST CRK *Independent* 0860

02/06/2020 REG:4291501 CAT:1A

BUF CRK THE RIGHT KIND U199
5L INDEPENDENCE 560-298Y
 5L BLACK ADINA 525-560

RED LAZY MC CC DETOUR 2W
LOST CRK GOLDEN GIRL 8606
 LOST CRK GOLDEN GIRL 6082

	CED	BW	WW	YW	ADG	DMI	MILK	ME	HPG	
EPD	15	-3.2	68	108	0.25	0.88	24	8	9	
PR%	30	26	49	49	49	64	66	70	85	
CEM	STAY	MARB	YG	CW	REA	FAT	ProS	HB	GM	
	7	9	0.40	0.02	16	-0.03	-0.01	44	4	40
	42	96	56	35	70	75	17	96	96	68

LOST CRK *Titus* 2953

02/12/2022 REG:4633295 CAT:1A

FEDDES SILVER BOW B226
FEDDES TITUS 863-E264
 FEDDES BLOCKANA 863

LOST CRK SIR NORSE 6226
LOST CRK KEENA 9532
 5 LOST CRK KEENA 5326

	CED	BW	WW	YW	ADG	DMI	MILK	ME	HPG	
EPD	7	0.9	72	113	0.26	0.96	26	6	11	
PR%	91	87	36	39	45	70	52	57	61	
CEM	STAY	MARB	YG	CW	REA	FAT	ProS	HB	GM	
	5	19	0.42	-0.04	28	0.36	-0.00	123	68	54
	76	13	53	15	34	17	22	28	25	43

Reference Sires

RED U2 *Malbec* 195D

01/17/2016 REG:32721545 CAT:1A

RED U-2 RECON 192Y
RED U-2 RECKONING 149A
RED U-2 ANEXA 271Y

RED MINBURN COPENHAGEN 3Y
RED U-2 MABEL 60A
RED U-2 MABEL 1061T

	CED	BW	WW	YW	ADG	DMI	MILK	ME	HPG	
EPD	17	-4.4	54	80	0.16	0.17	29	-4	19	
PR%	17	12	88	92	93	8	24	15	1	
	CEM	STAY	MARB	YG	CW	REA	FAT	ProS	HB	GM
	9	16	0.29	-0.06	7	0.27	0.01	116	86	30
	17	36	76	11	89	26	47	35	8	83



FEDDES *Amsterdam* 3212

01/20/2023 REG:4787662 CAT:1A

BASIN HOBO 0545
TAC DRIFTER H10
TAC MS VERNA F66 ET

	CED	BW	WW	YW	ADG	DMI	MILK	ME	HPG	
EPD	18	-3.1	73	115	0.26	1.07	34	4	6	
PR%	13	28	31	36	45	78	4	51	98	
	CEM	STAY	MARB	YG	CW	REA	FAT	ProS	HB	GM

BIEBER SPARTACUS A193
FEDDES BLOCKANA E38-170
FEDDES BLOCKANA B45-E38

	9	24	0.45	0.09	30	0.20	0.03	153	103	50
	13	1	47	65	29	36	73	8	2	50

LOST CRK *Anchor* 1424

02/26/2021 REG:4452305 CAT:1A

MESSMERANCHOR 37N
LOST CRK ANCHOR 8640
LOST CRK STELLA 6406

	CED	BW	WW	YW	ADG	DMI	MILK	ME	HPG	
EPD	17	-3.7	43	68	0.16	0.16	25	1	9	
PR%	17	19	98	97	94	8	61	32	84	
	CEM	STAY	MARB	YG	CW	REA	FAT	ProS	HB	GM

LAUBACH LANCE 2179
LOST CRK JUANA 4240
LAUBACH JUANA 2040

	7	19	0.28	-0.02	6	0.03	0.00	96	64	32
	40	11	77	21	91	64	27	57	30	79

C-T *Resource* 1052

01/27/2021 REG:4470523 CAT:1A

MRLA RELOAD 56C
RED MRLA RESOURCE 137E
MRLA MISS 4422B

	CED	BW	WW	YW	ADG	DMI	MILK	ME	HPG	
EPD	7	2.4	64	100	0.22	0.76	28	7	18	
PR%	90	96	62	66	70	53	34	66	3	
	CEM	STAY	MARB	YG	CW	REA	FAT	ProS	HB	GM

BIEBER MAKE MIMI 7249
C-T LINSEY 0964
S. R. GRAND LINSEY

	6	17	0.37	0.04	32	0.23	0.01	127	75	52
	71	21	61	44	24	31	39	23	17	46

LOST CRK *Heavy Load* 9301

02/14/2019 REG:4126080 CAT:1A

SLGN WIDELoad 920W
PELTON WIDELoad 78B
PELTON MISS JAYLA 0508S

	CED	BW	WW	YW	ADG	DMI	MILK	ME	HPG	
EPD	13	-0.8	77	128	0.32	1.26	22	7	6	
PR%	52	66	19	17	16	88	79	64	98	
	CEM	STAY	MARB	YG	CW	REA	FAT	ProS	HB	GM

GMRA PEACEMAKER 1216
LOST CRK HARMONY 5301
LOST CRK GLORIA 3012

	4	16	0.64	0.02	30	0.28	0.01	104	33	71
	89	38	21	35	30	25	43	47	77	21

C-T *Seneca* 1012

01/17/2021 REG:4468395 CAT:1A

BIEBER ROLLIN DEEP Y118
RREDS SENECA 731C
RREDS ASTER 309A

	CED	BW	WW	YW	ADG	DMI	MILK	ME	HPG	
EPD	13	-2.5	84	129	0.29	1.52	18	7	10	
PR%	44	37	9	15	29	96	94	64	71	
	CEM	STAY	MARB	YG	CW	REA	FAT	ProS	HB	GM

5L INDEPENDENCE 560-298Y
C-T TINA 6006
C-T TINA 4008

	6	9	0.41	0.19	26	-0.06	0.04	42	14	28
	61	94	54	92	39	79	87	96	93	85

Lot 1

The Intensity Son's

LOST CRK *Intensity* 5605

02/18/2025 REG:5130195 CAT:1A

STRA RELENTLESS
LOST CRK INTENSITY 1900
VF MS CHETA GIRL 9007-144B

ANDRAS NEW DIRECTION R240
C-T CHRIS 6051
C-T CHRIS 1116

Act. BW: 87
Act. WW: 643
Ratio WW: 93
Scrotal: 34

Kicking off the sale with an Intensity 1900 son. He has caught our eye since he was a calf and knowing the background of his dam, we knew he would be one to look out for. His dam has produced countless females and bulls that have been in the top end of production. She has certainly made an impact in our herd. 5605 is in the Top 8% for ME and 22% for HPG, making him a great choice for retaining females that will have longevity. This bull is packing a lot of power, he's incredibly stout and bold ribbed in a moderate package.



	CED	BW	WW	YW	ADG	DMI	MILK	ME	HPG	CEM	STAY	MARB	YG	CW	REA	FAT	ProS	HB	GM
EPD	13	-2.3	45	73	0.17	0.49	25	-12	6	14	14	0.55	0.09	4	-0.20	0.02	103	61	42
PR%	46	41	98	96	90	23	60	8	22	67	63	29	72	95	96	62	51	34	72

Lot 2

LOST CRK *Intensity* 5061

02/09/2025 REG:5130303 CAT:1B

STRA RELENTLESS
LOST CRK INTENSITY 1900
VF MS CHETA GIRL 9007-144B

LOST CRK MONTANA 6742
LOST CRK HEAVENLY 0618
LOST CRK HEAVENLY 6180

Act. BW: 87
Act. WW: 707
Ratio WW: 99
Scrotal: 34.5

5061 is sure to catch your eye as soon as you walk in the pen. A powerhouse bull that checks all the boxes. Top 12% ProS, 6% HB, 13% ME and 16% STAY. A true female maker that will also put pounds on calves. His dam goes back to Feddes Montana X44 who made a tremendous impact on our herd. She has been a consistent producer for us.



	CED	BW	WW	YW	ADG	DMI	MILK	ME	HPG	CEM	STAY	MARB	YG	CW	REA	FAT	ProS	HB	GM
EPD	11	-1.4	58	88	0.19	0.51	28	-9	13	7	18	0.58	0.02	12	0.02	0.01	136	85	51
PR%	68	58	81	83	83	25	30	13	32	55	16	24	35	84	71	38	13	6	51

Lot 3

LOST CRK *Intensity* 5168

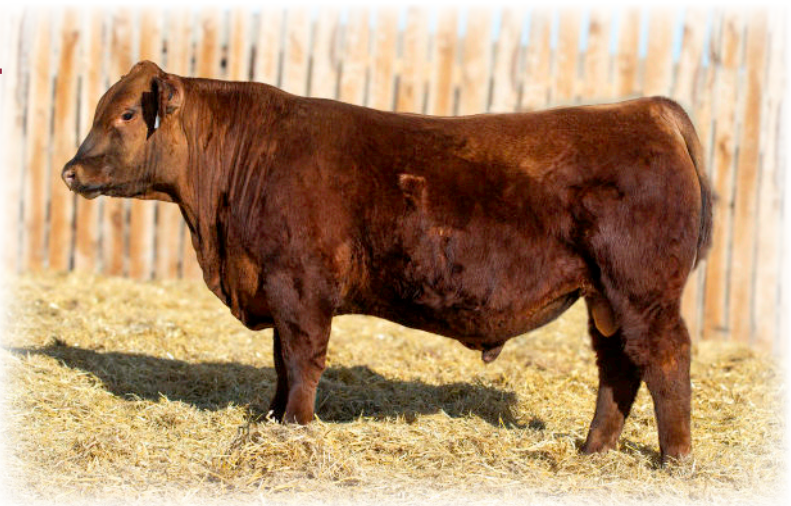
02/17/2025 REG:5130365 CAT:1B

STRA RELENTLESS
LOST CRK INTENSITY 1900
VF MS CHETA GIRL 9007-144B

LOST CRK DON JULIO 9619
LOST CRK HEAVENLY 1618
LOST CRK HEAVENLY 6180

Act. BW: 97
Act. WW: 742
Ratio WW: 108
Scrotal: 37

If you're looking to breed consistency this bull goes hand in hand with the Lot 2 bull. Both are sired by Intensity 1900 and come from the same cow family. A big growth bull who has a weaning ratio of 108 and in the Top 14% ME.



	CED	BW	WW	YW	ADG	DMI	MILK	ME	HPG	CEM	STAY	MARB	YG	CW	REA	FAT	ProS	HB	GM
EPD	8	0.7	64	101	0.23	0.57	22	-8	12	4	16	0.42	0.05	16	0.09	0.02	108	63	45
PR%	89	90	62	60	59	31	84	14	39	94	36	52	52	72	58	64	43	30	65

Lot 4

The Intensity Son's

LOST CRK *Intensity* 5636

02/15/2025 REG:5130199 CAT:1A

STRA RELENTLESS
LOST CRK INTENSITY 1900
VF MS CHETA GIRL 9007-144B

RED ED 443
LOST CRK SASSIE 6360
LOST CRK KLASSY 3608

Act. BW: 94
Act. WW: 722
Ratio WW: 103
Scrotal: 39

A really soggy made Intensity 1900 son that stands on a stout skeleton as you study the mass down his top and hip that carries into a full ¼ and stifle. His dam is a 10 yr old cow that is equally easy fleshing and has an ideal foot shape. He boasts having Top 7% ProS and 5% HB. He should make some nice females.

	CED	BW	WW	YW	ADG	DMI	MILK	ME	HPG	CEM	STAY	MARB	YG	CW	REA	FAT	ProS	HB	GM
EPD	12	-1.4	59	94	0.22	0.64	30	-4	12	7	19	0.64	0.08	17	-0.06	0.01	146	87	59
PR%	63	58	78	75	68	44	13	18	35	58	8	18	67	71	84	45	7	5	32



Lot 5

LOST CRK *Intensity* 5663

02/12/2025 REG:5130517 CAT:1A

STRA RELENTLESS
LOST CRK INTENSITY 1900
VF MS CHETA GIRL 9007-144B

LOST CRK DON JULIO 9619
LOST CRK AE HEIRESS 3663
LOST CRK HEIRESS 0663

Act. BW: 63
Act. WW: 655
Ratio WW: 102
Scrotal: 36

An ideal calving ease Intensity 1900 bull that is smooth made and long bodied. Take a look at his calving ease indexes; Top 4% CE, 7% BW along with 13% HB, 18% ME and 6% CEM. He comes from a cow family that we think a lot of. They have great udders and have had great fertility.

	CED	BW	WW	YW	ADG	DMI	MILK	ME	HPG	CEM	STAY	MARB	YG	CW	REA	FAT	ProS	HB	GM
EPD	20	-4.9	56	89	0.21	0.71	26	-5	12	10	17	0.31	0.11	13	0.09	0.05	105	77	28
PR%	4	7	86	83	77	51	51	18	47	5	26	82	79	81	58	97	48	12	91



Lot 6

LOST CRK *Intensity* 5188

02/05/2025 REG:5130377 CAT:1A

STRA RELENTLESS
LOST CRK INTENSITY 1900
VF MS CHETA GIRL 9007-144B

LOST CRK DON JULIO 9619
LOST CRK HEIRESS 1883
FISCHER HEIRESS 837

Act. BW: 76
Act. WW: 690
Ratio WW: 97
Scrotal: 35.5

This bull has nice length and muscle shape. He boasts a HB index of 7%. On his maternal side, you have the Heiress cow family and Lost Crk Don Julio who has added lots of power to the herd. Then, add STRA Relentless on top it is sure to balance out his EPDs.

	CED	BW	WW	YW	ADG	DMI	MILK	ME	HPG	CEM	STAY	MARB	YG	CW	REA	FAT	ProS	HB	GM
EPD	13	-1.7	61	94	0.21	0.70	27	-5	12	8	18	0.55	0.06	13	-0.02	0.01	129	83	46
PR%	47	52	71	75	77	51	39	17	45	27	18	29	54	81	79	50	19	7	65



Lot 7

The Intensity Son's

LOST CRK *Intensity* 5770

02/07/2025 REG:5130217 CAT:1A

STRA RELENTLESS
LOST CRK INTENSITY 1900

VF MS CHETA GIRL 9007-144B

LSF SAGA 1040Y
SCMH ELLA 705

KUHNS BOND GIRL Y061

Act. BW: 78
Act. WW: 663
Ratio WW: 91
Scrotal: 36

An Incredibly docile bull that is a long bodied, clean made, tying into a really flat and smooth shoulder design. A real calving ease candidate with a Top 8% HB. His dam has an ideal foot shape and size.



	CED	BW	WW	YW	ADG	DMI	MILK	ME	HPG	CEM	STAY	MARB	YG	CW	REA	FAT	ProS	HB	GM
EPD	14	-2.9	54	87	0.20	0.37	26	-7	13	8	17	0.56	0.10	12	-0.08	0.02	134	81	53
PR%	41	30	89	85	79	14	48	15	24	37	22	27	75	84	87	72	15	8	46

Lot 8

LOST CRK *Intensity* 5040

02/09/2025 REG:5130307 CAT:1B

STRA RELENTLESS
LOST CRK INTENSITY 1900

VF MS CHETA GIRL 9007-144B

LOST CRK SIR NORSE 6226
LOST CRK SIMONE 0408

LOST CRK SIMONE 6408

Act. BW: 95
Act. WW: 708
Ratio WW: 99
Scrotal: 34

A growthy bull that is wide based, with a long clean front and lots of dimension over his top. His grandsire Lost Crk Norse 6226 has left many good daughters throughout our herd.



	CED	BW	WW	YW	ADG	DMI	MILK	ME	HPG	CEM	STAY	MARB	YG	CW	REA	FAT	ProS	HB	GM
EPD	8	-0.3	59	92	0.21	0.55	28	-6	14	5	18	0.57	0.02	12	0.01	0.00	132	80	52
PR%	87	79	78	79	77	29	24	16	17	88	13	26	35	83	73	35	16	10	47

Lot 9

LOST CRK *Intensity* 5732

02/11/2025 REG:5130399 CAT:1B

STRA RELENTLESS
LOST CRK INTENSITY 1900

VF MS CHETA GIRL 9007-144B

LOST CRK LANCER 3113
LOST CRK MISHAY 7322

LOST CRK MISHAY 5322

Act. BW: 70
Act. WW: 617
Ratio WW: 86
Scrotal: 34.5

This bull really catches your eye from the profile and is complete in body type and kind. His dam has made multiple herd sires over her career. 5732 will make a great calving ease sire and female producer with a 7% HB, 8% CED, 8% BW and 4% CEM.



	CED	BW	WW	YW	ADG	DMI	MILK	ME	HPG	CEM	STAY	MARB	YG	CW	REA	FAT	ProS	HB	GM
EPD	18	-4.7	47	69	0.14	0.22	30	-8	12	10	17	0.57	0.02	0	-0.14	0.01	123	83	39
PR%	8	8	97	97	97	7	16	13	35	4	24	26	35	98	92	37	27	7	77

The Reputation Son's

Lot 10

LOST CRK Reputation 5772

02/10/2025 REG: 5130215 CAT: 1A

C-T RED ROCK 5033
C-T REPUTATION 0094
C-T LINSEY 8119

Act. BW: 94
Act. WW: 830
Ratio WW: 115
Scrotal: 39

HXC CANNON BALL 22200Z
SUNR ANDREA 721
SUNR 235

The first of the Reputation sons was the highest weaning weight bull of the group, with an actual weaning weight of 830. A big growth bull that will put pounds on calves. An ideal candidate for making steer calves, with a Top 15% WW, 5% YW, 7% YG, 5% REA and 10% FAT. His dam comes from the Sun River herd who has been a mainstay in our herd, she's big bodied and easy fleshing.



	CED	BW	WW	YW	ADG	DMI	MILK	ME	HPG	CEM	STAY	MARB	YG	CW	REA	FAT	ProS	HB	GM
EPD	9	-1.0	91	137	0.28	1.05	26	6	7	3	13	0.46	-0.06	34	0.46	-0.01	74	20	54
PR%	82	66	1	5	24	83	50	64	99	96	78	45	6	14	5	10	88	94	42

Lot 11

LOST CRK Reputation 5427

02/10/2025 REG: 5130265 CAT: 1A

C-T RED ROCK 5033
C-T REPUTATION 0094
C-T LINSEY 8119

Act. BW: 84
Act. WW: 723
Ratio WW: 100
Scrotal: 36

LACY FOUNDATION 448
LOST CRK LENORA 9427
LOST CRK LENORA 4274

A Reputation son that is out of a Lacy Foundation cow that we think a lot of. She is the front pasture kind of cow, and this bull follows in her footsteps. A lot of great female maker bulls in his pedigree include Make Mimi and Glacier Chateau.



	CED	BW	WW	YW	ADG	DMI	MILK	ME	HPG	CEM	STAY	MARB	YG	CW	REA	FAT	ProS	HB	GM
EPD	13	-2.4	73	109	0.23	0.65	30	0	8	7	14	0.41	-0.01	20	0.22	0.00	88	45	42
PR%	52	39	27	43	63	45	16	33	98	45	64	54	21	61	33	35	74	64	71

Lot 12

LOST CRK Reputation 5619

02/08/2025 REG: 5130213 CAT: 1A

C-T RED ROCK 5033
C-T REPUTATION 0094
C-T LINSEY 8119

Act. BW: 87
Act. WW: 775
Ratio WW: 107
Scrotal: 39.5

FISCHER DBL CHECK 427
FISCHER HEIRESS 637
FISCHER HEIRESS 378

This Reputation son is a long spined, big bodied bull with a lot of growth. He ranks in the Top 12% WW, 12% YW, 13% ADG and 1% for Milk. His dam, another Heiress cow, has a 103 MPPA and is a favorite in our herd. She is feminine and long bodied with an ideal udder.



	CED	BW	WW	YW	ADG	DMI	MILK	ME	HPG	CEM	STAY	MARB	YG	CW	REA	FAT	ProS	HB	GM
EPD	11	-1.6	79	126	0.30	1.22	36	14	9	5	16	0.47	0.01	27	0.20	0.00	93	40	52
PR%	68	54	12	14	18	92	1	93	90	79	38	42	30	30	35	28	67	73	46

Lot 13

The Reputation Son's

LOST CRK *Reputation* 5912

02/20/2025 REG: 5130255 CAT: 1B

C-T RED ROCK 5033
C-T REPUTATION 0094
C-T LINSEY 8119

Act. BW: 77
Act. WW: 748
Ratio WW: 107
Scrotal: 36.5

LOST CRK RED SPECIAL 5280
LOST CRK MISS 9122
BARTA MISS Y226

A soggy, easy fleshing type bull. His dam, MPPA 104, has made several herd sires. They all have been stout big boned bulls that are always at the top of the selection. With how his sire is being utilized in some very high end breeding programs that just makes him all the more attractive.



	CED	BW	WW	YW	ADG	DMI	MILK	ME	HPG	CEM	STAY	MARB	YG	CW	REA	FAT	ProS	HB	GM
EPD	15	-2.	58	90	0.20	0.75	26	6	11	7	16	0.45	0.03	16	0.10	0.01	93	52	42
PR%	26	43	79	82	81	55	44	62	70	44	36	47	37	74	55	49	66	51	72



The Red Blood Son's

Lot 17

LOST CRK *Red Blood* 5316

02/07/2025 REG: 5130533 CAT: 1A

DUFF RED BLOOD 18114
NIO RED BLOOD 3049
NIO RUBY ROSE 1133

Act. BW: 84
Act. WW: 670
Ratio WW: 102
Scrotal: 35

C-T SENECA 9081
LOST CRK LAKOTA 3163
LOST CRK LAKOTA 1630

A big body and bold ribbed bull, that tracks wide at the ground which transfers up into his skeleton and muscle shape. As you look at him genetically he's got Silver Bow and Seneca on bottom then Red Blood and Nova on top. These are all proven bulls, so put faith in this one to do some good things genetically. for you.



	CED	BW	WW	YW	ADG	DMI	MILK	ME	HPG	CEM	STAY	MARB	YG	CW	REA	FAT	ProS	HB	GM
EPD	12	-1.4	61	92	0.19	0.61	25	-5	10	7	14	0.40	0.05	9	0.01	0.02	82	52	30
PR%	58	58	71	78	83	35	58	18	78	41	70	56	52	88	73	68	81	50	90

Lot 18

LOST CRK *Red Blood* 5397

02/04/2025 REG: 5130527 CAT: 1A

DUFF RED BLOOD 18114
NIO RED BLOOD 3049
NIO RUBY ROSE 1133

Act. BW: 71
Act. WW: 656
Ratio WW: 100
Scrotal: 34

LOST CRK WIDELoad 0194
LOST CRK KEENA 3973
LOST CRK KEENA 9732

Heifer bull deluxe! He has a small head, flat smooth shoulders and a really balanced stylish look from the side. You'll be able to use him for several years with his moderate frame. His Wideload dam has a bright future, especially if her offspring have the MGD's look and style.



	CED	BW	WW	YW	ADG	DMI	MILK	ME	HPG	CEM	STAY	MARB	YG	CW	REA	FAT	ProS	HB	GM
EPD	18	-3.8	56	80	0.15	0.43	27	-6	10	8	14	0.40	0.01	7	-0.02	0.01	78	51	27
PR%	10	17	86	92	96	18	39	16	80	34	62	56	31	92	79	38	85	53	92

Lot 19

LOST CRK *Red Blood* 5383

02/21/2025 REG: 5130497 CAT: 1A

DUFF RED BLOOD 18114
NIO RED BLOOD 3049
NIO RUBY ROSE 1133

Act. BW: 68
Act. WW: 638
Ratio WW: 102
Scrotal: 32

STRA RELENTLESS
LOST CRK PRINCESS 3837
LOST CRK MT PRINCESS 8375

When Papa thought Tommy needed a cow, he made sure to give him one of the best. His Relentless heifer ranks in the Top 4% ProS and 5% HB and has done a great job here. This dark red bull comes in a moderate package with plenty of muscle. With Top 12% CED and 13% BW he should make a great heifer bull.



	CED	BW	WW	YW	ADG	DMI	MILK	ME	HPG	CEM	STAY	MARB	YG	CW	REA	FAT	ProS	HB	GM
EPD	17	-4.3	58	83	0.16	0.49	29	-7	12	9	14	0.59	0.02	5	-0.07	0.01	101	63	39
PR%	12	13	81	89	93	23	18	15	36	10	70	23	34	95	85	37	54	31	78

The Malbec Son's

Lot 20

LOST CRK *Malbec* 5308

02/01/2025 REG:5130511 CAT:1A

RED U-2 RECKONING 149A
RED U2 MALBEC 195D
 RED U-2 MABEL 60A

Act. BW: 86
 Act. WW: 723
 Ratio WW: 107
 Scrotal: 37.5

FEDDES TREADSTONE 704-9352
LOST CRK LADY BUG 3081
 LOST CRK LADY BUG 0181

A Malbec son that is really impressive when you study him. He is long, deep bodied with an expressive hind quarter. His dam is sired by the Feddes Treadstone bull that is widely known for throwing great udders on his females. 5308 is a great herd sire candidate for putting pounds on calves while having high quality females you can retain.



	CED	BW	WW	YW	ADG	DMI	MILK	ME	HPG	CEM	STAY	MARB	YG	CW	REA	FAT	ProS	HB	GM
EPD	10	-0.9	67	101	0.21	0.62	30	0	16	6	16	0.41	0.01	19	0.22	0.01	120	76	43
PR%	74	67	47	59	72	39	11	29	3	65	32	54	28	63	33	52	28	13	70

Lot 21

LOST CRK *Malbec* 5318

01/29/2025 REG:5130537 CAT:1B

RED U-2 RECKONING 149A
RED U2 MALBEC 195D
 RED U-2 MABEL 60A

Act. BW: 85
 Act. WW: 695
 Ratio WW: 103
 Scrotal: 37

LOST CRK INTENSITY 1900
LOST CRK HANNAH 3184
 LOST CRK HANNAH 1840

Another deep bodied expressive Malbec son that is similar to his half brother. His dam comes from a cow family that are really easy fleshing with correct feet under them.



	CED	BW	WW	YW	ADG	DMI	MILK	ME	HPG	CEM	STAY	MARB	YG	CW	REA	FAT	ProS	HB	GM
EPD	12	-1.6	63	96	0.21	0.54	29	-4	16	7	17	0.43	-0.01	14	0.22	0.01	127	84	44
PR%	63	54	65	71	75	28	18	19	3	45	28	51	21	78	33	55	20	7	69

Lot 22

LOST CRK *Malbec* 5661

02/09/2025 REG:5130535 CAT:1A

RED U-W RECKONING 149A
RED U2 MALBEC 195S
 RED U-2 MABEL 60A

Act. BW: 74
 Act. WW: 618
 Ratio WW: 96
 Scrotal: 32.5

LOST CRK INDEPENDENT 0860
LOST CRK OSCE 3661
 LOST CRK OSCE 1661

The calving ease Malbec of the trio. With a long, deep body that ties smoothly into his shoulders while still having adequate shape to his top and hindquarter.



His dam comes from our herd sire Lost Crk Independent who has made phenotypically eye appealing cattle.

	CED	BW	WW	YW	ADG	DMI	MILK	ME	HPG	CEM	STAY	MARB	YG	CW	REA	FAT	ProS	HB	GM
EPD	14	-2.5	59	93	0.21	0.44	24	2	14	8	14	0.30	-0.03	12	0.14	0.00	89	54	36
PR%	39	37	77	77	75	19	67	39	14	34	65	84	17	84	47	28	72	48	82

Lot 23

The Independent Son's

LOST CRK *Independent* 5011

02/16/2025 REG: 5130285 CAT: 1A

5L INDEPENDENCE 560-298Y
LOST CRK INDEPENDENT 0860
LOST CRK GOLDEN GIRL 8608

Act. BW: 84
Act. WW: 705
Ratio WW: 101
Scrotal: 36

PELTON WIDELOAD 78B
LOST CRK LASS 0112
BARTA LASS Y126

Here comes the first of the Lost Crk Independent sons. A really attractive bull, that you have to appreciate with his skeletal length, expressive top and hind quarter. Another Wideload daughter getting the job done right. We can't expect anything less from this set of females.



	CED	BW	WW	YW	ADG	DMI	MILK	ME	HPG	CEM	STAY	MARB	YG	CW	REA	FAT	ProS	HB	GM
EPD	12	-0.5	62	98	0.22	0.85	25	6	9	6	16	0.53	0.04	26	0.23	0.01	102	44	58
PR%	59	75	67	68	66	66	56	65	88	77	38	32	41	34	30	55	53	67	35

Lot 24

LOST CRK *Independent* 5941

03/02/2025 REG: 5130261 CAT: 1B

5L INDEPENDENCE 560-298Y
LOST CRK INDEPENDENT 0860
LOST CRK GOLDEN GIRL 8608

Act. BW: 71
Act. WW: 715
Ratio WW: 106
Scrotal: 36

LOST CRK RED SPECIAL 5280
LOST CRK DUTCHESS 9412
FISCHER DUTCHESS 4120

This bull is really similar to his half brother. A deep sided athletic bull, that's stretched out in his spine. His calves will come with ease and grow after they hit the ground. This cow has been consistently throwing calves that are keeper pen quality.



	CED	BW	WW	YW	ADG	DMI	MILK	ME	HPG	CEM	STAY	MARB	YG	CW	REA	FAT	ProS	HB	GM
EPD	17	-2.7	69	109	0.25	0.08	24	8	11	9	17	0.48	0.01	24	0.21	0.00	117	62	56
PR%	14	34	39	42	46	61	62	73	54	20	27	40	27	46	33	33	31	33	39

Lot 25

LOST CRK *Independent* 5038

03/01/2025 REG: 5130291 CAT: 1A

5L INDEPENDENCE 560-298Y
LOST CRK INDEPENDENT 0860
LOST CRK GOLDEN GIRL 8608

Act. BW: 76
Act. WW: 647
Ratio WW: 97
Scrotal: 33.5

LOST CRK MONTANA 6742
LOST CRK LANA 0318
LOST CRK FIREFLY 3181

A deep twisted bull that is really expressive in his stifle, round in his rib shape and gets out and covers his tracks. His dam goes back to Feddes Montana X44 and the great Glacier Chateau bull that has done really well making females.



	CED	BW	WW	YW	ADG	DMI	MILK	ME	HPG	CEM	STAY	MARB	YG	CW	REA	FAT	ProS	HB	GM
EPD	14	-2.1	56	83	0.17	0.72	27	7	10	9	16	-	-	-	-	-	-	58	-
PR%	33	44	86	89	90	52	37	66	85	11	32	-	-	-	-	-	-	40	-



Lot 26

LOST CRK Titus 5097

02/24/2025 REG: 5130333 CAT: 1A

FEDDES TITUS 863-E264
LOST CRK TITUS 2953
 LOST CRK KEENA 9532

BUF CRK FINAL ANSWER W004
LOST CRK KEENA 9732
 LOST CRK KEENA 7326

Act. BW: 77
 Act. WW: 688
 Ratio WW: 100
 Scrotal: 36

This dude is maternal and has a deep front. He is round ribbed with a ton of shape over his hip. Add in a shot of Buf Crk Final Answer W004, which did wonders for Silver Spur in Colorado, and you got a bull that'll make females you can't let go.



	CED	BW	WW	YW	ADG	DMI	MILK	ME	HPG	CEM	STAY	MARB	YG	CW	REA	FAT	ProS	HB	GM
EPD	17	-3.8	53	80	0.17	0.53	25	-2	10	8	18	0.32	0.04	18	0.12	0.02	104	69	35
PR%	13	17	90	92	92	27	54	24	76	24	18	80	45	66	51	59	49	21	83

Lot 27

LOST CRK *Amsterdam* 5107

01/21/2025 REG: 5130481 CAT: 1A

TAC DRIFTER H10
FEDDES AMSTERDAM 3212
FEDDES BLOCKANA E38-170

Act. BW: 68
Act. WW: 680
Ratio WW: 99
Scrotal: 38

WEBER HEADLINER 59G
FEDDES FAYETTE D14-3107
FEDDES FAYETTE B15-D14

This Amsterdam son is out of a really nice heifer from Feddes Red Angus. He is a chunk, huge bodied and wide based, that can get out and travel. We look forward to what his dam will do going forward. He should be a calving easy bull with Top 19% CED and 19% BW.



	CED	BW	WW	YW	ADG	DMI	MILK	ME	HPG	CEM	STAY	MARB	YG	CW	REA	FAT	ProS	HB	GM
EPD	17	-3.6	62	90	0.17	1.07	25	6	9	9	13	0.42	0.02	11	-0.01	0.00	59	38	21
PR%	17	19	66	81	91	84	53	63	90	15	73	52	32	86	77	29	96	78	96

Lot 28

LOST CRK *Anchor* 5370

02/24/2025 REG: 5130493 CAT: 1B

LOST CRK ANCHOR 8640
LOST CRK ANCHOR 1424
LOST CRK JUANA 4240

Act. BW: 79
Act. WW: 655
Ratio WW: 106
Scrotal: 32.5

C-T RESOURCE 1052
LOST CRK ANGIE 3707
LOST CRK ANGIE 7507

Another athlete that's smooth made, will move out well and cover females with no problem. Being solid Lost Creek breeding with the exception of C-T Resource 1052. We know he will prove himself when you put him with any cow families.



	CED	BW	WW	YW	ADG	DMI	MILK	ME	HPG	CEM	STAY	MARB	YG	CW	REA	FAT	ProS	HB	GM
EPD	13	-1.8	67	100	0.21	0.46	31	3	12	8	18	0.54	0.01	17	0.13	0.01	127	75	52
PR%	52	50	47	62	76	21	10	48	47	31	16	30	29	69	49	38	20	14	47

Lot 29

LOST CRK *Resource* 5803

03/02/2025 REG: 5130229 CAT: 1A

C-T RESOURCE 1052
LOST CRK RESOURCE 3532
LOST CRK KEENA 5326

Act. BW: 78
Act. WW: 610
Ratio WW: 91
Scrotal: 32

BROWN GOLD MINE A7610
C-T MARIGOLD 8032
C-T MARIGOLD 4077

He is a level topped, flat shoulder bull that will work on heifers with his skeletal structure. His dam is from the great Marigold cow line and has done a very good job since we acquired her. I expect nothing less from this bull's future.



	CED	BW	WW	YW	ADG	DMI	MILK	ME	HPG	CEM	STAY	MARB	YG	CW	REA	FAT	ProS	HB	GM
EPD	16	-2.9	51	86	0.22	0.66	25	6	14	8	13	0.57	0.10	15	-0.05	0.02	99	41	58
PR%	18	30	94	87	68	46	53	65	3	29	73	26	75	75	83	66	58	71	36

Lot 30

LOST CRK *Resource* 5175

02/15/2025 REG:5130373 CAT:1A

RED MRLA RESOURCE 137E
C-T RESOURCE 1052
C-T LINSEY 0964

Act. BW: 98
Act. WW: 639
Ratio WW: 94
Scrotal: 36.5

LOST CRK DON JULIO 9619
LOST CRK DEDRA 1753
LOST CRK DEDRA 7531

An eye-catching bull that balances up really well on the profile and is even more impressive on the move. His dam is another Lost Crk Don Julio daughter which makes him related to more than one bull in this group, which says a lot for the sire's impact.



	CED	BW	WW	YW	ADG	DMI	MILK	ME	HPG	CEM	STAY	MARB	YG	CW	REA	FAT	ProS	HB	GM
EPD	7	1.4	61	92	0.20	0.49	24	2	13	6	17	0.32	0.02	21	0.16	0.01	102	62	40
PR%	93	94	71	77	81	23	65	42	25	77	29	80	32	57	42	38	52	32	75

Lot 31

LOST CRK *Heavy Load* 5167

03/04/2025 REG:5130369 CAT:1B

PELTON WIDELOAD 78B
LOST CRK HEAVY LOAD 9301
LOST CRK HARMONY 5301

Act. BW: 83
Act. WW: 668
Ratio WW: 103
Scrotal: 32

RED GET ALONG WANDER 905
LOST CRK ANGELICA 1637
LOST CRK ANGELICA 6307

All our own genetics in a smooth front round ribbed bull that is set on good feet and legs. Like many other bulls in the offering he's out of a young cow and that shows how strong the herds cow power is. Now you just need to take a piece of it home with you.



	CED	BW	WW	YW	ADG	DMI	MILK	ME	HPG	CEM	STAY	MARB	YG	CW	REA	FAT	ProS	HB	GM
EPD	15	-2.3	57	93	0.23	0.92	21	6	9	8	17	0.49	0.09	19	-0.02	0.02	101	52	49
PR%	26	41	84	76	60	73	91	63	89	37	28	39	73	64	79	58	53	51	54

Lot 32

LOST CRK *Seneca* 5204

03/09/2025 REG:5130405 CAT:1A

RREDS SENECA 731C
C-T SENECA 1012
C-T TINA 6006

Act. BW: 79
Act. WW: 657
Ratio WW: 106
Scrotal: 32.5

BIEBER FULLY STOCKED H179
C-T CHRIS 2043
C-T CHRIS 5026

His dam we purchased from C-T Red Angus. The Chris and Tina cow lines need no introduction of being good mama cows. For being a March calf, he grew as well as everyone else in the bull pen. He has the looks to throw some very eye appealing calves.



	CED	BW	WW	YW	ADG	DMI	MILK	ME	HPG	CEM	STAY	MARB	YG	CW	REA	FAT	ProS	HB	GM
EPD	11	-0.4	72	119	0.29	1.26	24	7	11	8	15	0.41	0.06	29	0.18	0.01	109	57	52
PR%	70	77	31	24	20	93	65	66	67	27	44	54	57	25	39	50	43	41	48

**Lost Creek Red Angus
100 Cash Road
Molt, Montana 59057**

