

# GNERER ANGUS



*Join us on Saturday*

**MARCH 21, 2026**

**1PM AT THE RANCH**

*Olive, MT*



**PRODUCING QUALITY BULLS BY FOCUSING ON A SUPERIOR COW**

# GNERER ANGUS



*Welcome!*



*Pictured: Chris, Krista, Maureen, Renee, Joe*

A big “Howdy” from the Gnerer Angus Family,

Thank you for taking the time out of your busy day to check out our program and our 2026 bull offering.

We value every customer we are given the opportunity to serve. As always, we strive to bring our customers the best product by focusing on the main staples of our cow herd including fertility, efficiency, longevity, durability, and correct udder and feet quality. We put a large emphasis on disposition and we are probably most well-known for our gentle cows.

Our program has been built around a superior female. We have heavily culled our cow herd leaving only the time-tested and proven elite females. In turn, the superior seedstock has followed. It really is as simple as that.

We live in the rangeland of Southeastern Montana. The summers are harsh, hot, and often drought laden. Our winters are frigid and most times unrelenting as temps can reach 40 below zero. Our cattle must perform without the luxury of irrigated pastures, corn fields, or green river bottoms. Our cows turn hill sides and dryland pastures into profit. NO pampering - NO fed in genetics- just actual “real world” profit from cows that flat WORK. They work for us and their genetics will work for you.

We would love to chat with you about the needs and goals of your operation. Please call, text, or stop in anytime.

The Gnerer’s love to talk and love to talk about cattle even more. We look forward to hearing from you and we hope you can join us sale day.

[WWW.GNERERANGUS.COM](http://WWW.GNERERANGUS.COM)



SCAN TO GO  
TO OUR WEBSITE

**Chris**

(406) 935-3183  
krista.gnerer@hotmail.com

**Joe**

(406) 498-6113  
rjgnerer@gmail.com

**Steve**

(406) 860-8081  
gnererelectric@gmail.com

SALE BARN: (406) 436-2077



## **AUCTIONEER**

Kyle Shobe: 406-366-0472

## **SALE DAY REPRESENTATIVES**

Chris Gnerer: 406-935-3183

Joe Gnerer: 406-498-6113

Greg Gnerer: 406-860-0244

Steve Gnerer: 406-860-8081

Matt Wznick, Western Ag Reporter: 406-489-2414

Jaramie McLean, TriState Livestock News: 406-853-3174

## **HERD HEALTH**

Broadus Veterinary Clinic

Birth: Alpha 7, weighed & tagged

Branding & Weaning: Pyramid 5 plus Presponse, Inforce 3, Bar-Vac7 plus Somnus, Multi-Min & Ivermectin; Clean-Up 2 prior to sale day.

## **FERTILITY**

All bulls have passed a breeding soundness exam and fertility check performed by Dr. Liam Robbins of Diamond R Veterinary Service.

## **DELIVERY & WINTERING**

\$100 off per bull if picked up on sale day. Free delivery up to 300 miles on all bulls. Free delivery up to 500 miles on purchases exceeding \$7000 & at cost beyond 500 miles. Bulls will be kept until April 1st, 2026, then we will contact you to arrange a delivery date. If you are unable to receive them in April, feeding arrangements can be made at buyers expense.

## **SALE ORDER & ONLINE BIDDING**

Bulls will sell in numerical order starting with Lot 1.

If you are unable to attend the sale, bulls can be bought online using DV Auction, Livestock Market or via telephone by contacting any Sale Day Representative.

## **BREEDING SEASON GUARANTEE**

Full Breeding Season Guarantee (90 days from turn out) on bulls purchased for \$6000 or more. If a problem occurs, we will give you a suitable replacement bull if one is available, or you will receive full credit minus the salvage value at next year's sale. Notify us of injury as soon as possible on all bulls. We reserve the right to a second opinion by the veterinarian of our choice.

## **LEGAL**

Owners will retain 1/3 semen interest on all bulls. All persons who attend do so at their own risk. Gnerer Angus assumes no liability, legal or otherwise, for any accidents which may occur.

## **SALE LOCATION**

Sale held in a heated facility. Ranch is between Miles City and Broadus, MT, located 13 miles north of Broadus on HWY 59 on Ash Creek Rd. Signs will be posted.

## **DETAILS**

Complimentary lunch served at 11am. The sale begins at 1pm MST.

## **MARKETING**

Catalog, ad designs, & bull videos by Horizon Marketing Agency, (406) 853-8426

# REFERENCE SIRES



CED	BW	WW	YW	SC	DOC	MILK	CW	MARB	RE	SEN	SM	SF	SB
6	-0.7	80	128	1.25	20	31	52	0.19	0.33	-24	61	98	122

REG: \*19343216

B Bar Windy 79  
**B Bar Windy 7 3575**  
 B Bar Eulima 357

Crook Mt Really Windy 141  
 B Bar Lady Jewel 116  
 B Bar Rainmaker 9601  
 B Bar Eulima 970

Tombstone 050  
**Millars Queen Lass 5273**  
 Millars Queen Lass 3276

Sitz Upward 307R  
 Mytty Countess 90  
 V D A R Really Windy 4097  
 Millars Queen Lass 8276

We had heard a lot of great things about John and Breezy Millar's "Duke" from South Dakota and we are happy that we decided to use him. We love that his pedigree is stacked with PATHFINDER cows, and his dam Millars Queen Lass 5273 owns WW and YW ratios of 4@114 respectively! Duke's calves did come easy and they had great vigor, noticeable favorites in our calf crop. Duke has proved effective in marking his offspring, with added length, volume, calving ease, and growth. We are calving the heifers out of Duke and they are a beautiful bunch. Great mothers with lots of volume!

**¾ Brothers**

**Millars Duke 816 x Gnerer Up Side 3923 - Lots 41,16**



CED	BW	WW	YW	SC	DOC	MILK	CW	MARB	RE	SEN	SM	SF	SB
11	-0.5	64	126	1.23	29	24	47	0.62	0.54	-7	94	111	162

REG: \*19464109

Connealy Judgment  
**KG Justified 3023**  
 KG Miss Magic 1443

Connealy Consensus 7229  
 Entrine of Conanga 9876  
 Sitz Wisdom 481T  
 KG Miss Magic 3528

Sitz Reinvested 636a  
**GDAR Forever Lady 7533**  
 GDAR Forever Lady 1138

Connealy Thunder  
 Sitz Ellunas Elite 656T  
 GDAR Justice 622  
 Coleman Donna 386

GDAR Justified 914 is a balanced sire that covers all the bases! We were able to get a good look him at World West Sires. He is level in his design, huge topped, wide based, big ribbed and steps down on a perfect foot- very PERFECT! On the move, 914 is super sound and athletic - covering his track on every stride. 914 is stamping all his progeny with his same shape, structure and ease of fleshing he exhibits. The cow family behind 914 traces back almost 70 years at Gartner-Denowh, originating with the cow that started the Donna's and Forever Lady's! 914 daughters are impressive and look to make model cows. Use 914 to sire calves that come easy and grow, are easy to handle and built to last!



CED	BW	WW	YW	SC	DOC	MILK	CW	MARB	RE	SEN	SM	SF	SB
3	2.3	69	129	1.75	26	28	51	1.38	0.92	-23	78	100	189

REG: +\*19430597

G A R Sure Fire  
**G A R Big Step K715**  
 Chair Rock Prophet 3131

Connealy In Sure 8524  
 Chair Rock 5050 G A R 8086  
 G A R Prophet  
 Chair Rock 5050 G A R 9099

EXAR Denver 2002B  
**Basin Lucy 4261**  
 Basin Lucy 1022

EXAR Upshot 0562B  
 Exar Royal Lass 1067  
 Gardens Wave  
 Basin Lucy 2625

STEP UP is a good structured, wide based, deep bodied sire. He stands on a big solid foot and has that masculine herd sire look. He consistently sires stout made, high performance, eye appealing cattle while adding foot quality and end-product merit. Take a "Step Up" in your breeding program.

**¾ Brothers**

**EZAR Step Up 9178x Gnerer Black Cedar 4112 - Lots 21,50,5,61,91**  
**EZAR Step Up 9178x Gnerer Windy Prize 3903 - Lots 93,11,31**  
**EZAR Step Up 9178x Gnerer Really Windy 3601 - Lots 43,22,24,12,59,35**



CED	BW	WW	YW	SC	DOC	MILK	CW	MARB	RE	SEN	SM	SF	SB
12	-0.4	61	107	0.36	14	23	51	0.71	0.61	-3	64	108	161

REG: #\*17666102

S A V Final Answer 0035  
**Connealy Capitalist 028**  
 Prides Pita of Conanga 8821

Sitz Traveler 8180  
 S A V Emulous 8145  
 C R A Bextor 872 5205 608  
 Prides Trav of Conanga 6499

C A Future Direction 5321  
**LD Dixie Erica 2053**  
 LD Dixie Erica Oar 0853

G A R Precision 1680  
 C A Miss Power Fix 308  
 LD Royce Onaroll 810  
 Dixie Erica of R R 8553

LD Capitalist 316 is a thick made, calving ease sire that stamps his calves the same. His high customer satisfaction has made him one of the most popular, heaviest used Angus sire in recent years. His daughters are the keeping kind and will make an improvement in any herd.

**¾ Brothers**

**LD Capitalist 316 x Gnerer Right Answer 112 - Lots 108, 53**  
**LD Capitalist 316 x VDAR Showdown 7236 - Lots 36,47**  
**LD Capitalist 316 x Gnerer Rocky 8663 - Lots 23, 42**  
**LD Capitalist 316, U-2 Coalition 206C - Lots 54, 56**

# REFERENCE SIRES



CED	BW	WW	YW	SC	DOC	MILK	CW	MARB	RE	\$EN	\$M	\$F	\$B
3	1.3	72	124	1.23	31	31	55	1.53	0.73	-36	41	108	122

REG: #\*18962396

Basin Payweight 006S  
**Basin Payweight 1682**  
 21AR O Lass 7017

Poss Hoover Dam 2509  
**Poss Pride 5163**  
 Poss Pride 9526

Vermilion Payweight J847  
 Basin Lucy 3829  
 HARB Pendleton 765 J H  
 21AR O Lass F24A

Hoover Dam  
 Poss Erica 793  
 G A R Predestined  
 Baldrige Pride R600

POSS Maverick is one of the most popular angus sires all across the globe. He originates from Blevin Angus in Canada. He ranks in the top 1% of Current Sires for Marb, \$G, \$B, and \$C. His bold outlining and imposing 3 dimensional body composition are rarely found in such a high marbling sire. Maverick is the #1 \$B son of Basin Payweight 1682. His first progeny are excelling in genomic scores and topping sales.

*3/4 Brothers - Poss Maverick x VDAR Cedar Wind 8111 - Lots 57, 62*  
*Full ET Brothers - Poss Maverick x U-2 Coalition 206C - Lots 27, 83*



CED	BW	WW	YW	SC	DOC	MILK	CW	MARB	RE	\$EN	\$M	\$F	\$B
7	1	92	158	1.32	23	25	84	1.24	0.96	-36	69	136	219

REG: \*19820224

KM Broken Bow 002  
**Casino Bomber N33**  
 Casino Annie K48

G A R Phenom 7953  
**T/D Ruby of Tiffany 824**  
 B/R Ruby of Tiffany 688

Summitcrest Complete 1P55  
 Summitcrest Princess OP12  
 DPL Upward L70  
 Casino Annie G64

G A R New Design 5050  
 G A R Progress 830  
 Tex Demand 2791  
 B/R Ruby of Tiffany 8496

DOC RYAN was the top selling \$525,000 record-setting Bull of the 2021 T/D Angus sale. He has a time-tested and proven cow family behind him, an impeccable phenotype accentuated by incredible internal dimension, classic structural soundness, and superior performance. He is an exciting out cross and currently he has an average progeny weaning ratio of 103 on almost 500 head. His calves are structurally superb, thick, and pushing the scale down at weaning. He ranks in the top 2% of current sires for WW, YW, CW, and \$W.

*3/4 Brothers*  
*T/D Doc Ryan 049 x VDAR Winston 2165 - Lots 66, 109*  
*T/D Doc Ryan 049 x KCF Bennett Boulder - Lots 110,99*



CED	BW	WW	YW	SC	DOC	MILK	CW	MARB	RE	\$EN	\$M	\$F	\$B
4	2.9	90	164	1.22	21	28	82	1.32	1.24	-40	50	130	223

REG: \*20458552

Casino Bomber N33  
**T/D Doc Ryan 049**  
 T/D Ruby of Tiffany 824

Herbster Sportsman 232  
**Herbster Blackbird 616**  
 Sandpoint Blackbird 8809

KM Broken Bow 002  
 Casino Annie K48  
 G A R Phenom 7953  
 B/R Ruby of Tiffany 688

S A V Pursuit 0160  
 HF Blackcap May 0102  
 Connealy Onward  
 Riverbend Blackbird 4301

Herbster Lucky Seven 256 is extremely impressive in his power, leg structure, and masculinity. A "man among boys," his growth potential exploded after weaning and his overall mass blows people away! He had an adjusted weaning weight of 782 to ratio 111. His mother, Herbster Blackbird is currently a featured donor at the Herbster Angus program. Lucky Seven's maternal granddam is "the mother of herd bulls," Sandpoint Blackbird 8809. "8809" is the second highest-selling cow in Angus history with a valuation of \$500,000 and has total progeny sales topping \$9 million to date. She is the dam of the \$1.46 million VAR Power Play.

*3/4 Brothers*  
*Herbster Lucky Seven x VDAR Clarence 2285 - Lots 6, 49, 51*

## GNERER 316 CAP 3033



CED	BW	WW	YW	SC	DOC	MILK	CW	MARB	RE	\$EN	\$M	\$F	\$B
12	-0.5	83	134	1.19	16	26	65	0.74	0.61	-32	68	109	163

REG: \*20857402

Connealy Capitalist 028  
**LD Capitalist 316**  
 LD Dixie Erica 2053

Deep Creek 38 Special 900  
**Gnerer Patty 167**  
 Patty 19-747

S A V Final Answer 0035  
 Prides Pita of Conanga 8821  
 C A Future Direction 5321  
 LD Dixie Erica Oar 0853

Baldrige 38 Special  
 Deep Creek Rev Princess 742  
 VDAR Cedar Wind 7000  
 Highland Patty 17-284

This Capitalist 316 son was one of our favorites and one of our top sellers in our 2023 Bull Sale. He combines calving ease and growth. Our Capitalist 316 progeny are always thick, complete and have great dispositions. 316 crushed the scales at weaning time with a 205 day weight of 816. We will be using him extensively in our program and we know he will be a great addition to any herd. Semen available.

*3/4 Brothers*  
*Gnerer 316 Cap 3033 x VDAR Winston 2165 - Lots 13,46,116*  
*Gnerer 316 Cap 3033 x VDAR Cedar Wind 568 - Lots 65,89*

# REFERENCE SIRES

## COLEMAN BRAVO 6313



REG: #+\*18734838

O C C Paxton 730P  
**Coleman Charlo 0256**  
 Bohi Abigale 6014

Connealy Onward  
**Coleman Donna 714**  
 Coleman Donna 386

O C C Focus 813F  
 O C C Blackbird 736K  
 Sitz Traveler 8180  
 S A V Abigale 6062

Connealy Lead On  
 Altune of Conanga 6104  
 Basin Rainmaker 654X  
 KMK Donna J311

Coleman Bravo 6313 is a true breeding bull that is highly respected by cattlemen around the world, industry proven, and a breed leader in making productive females with femininity and beautiful udders in a wedge-shape package. Bravo was the \$450,000 all-time record-selling bull and featured Lot 1 bull of the 2018 Coleman Angus Ranch Bull Sale. This powerful and popular bull has dominant capacity and the correctness and quality of a true breeding bull to follow the tradition of his legendary sire.

CED	BW	WW	YW	SC	DOC	MILK	CW	MARB	RE	\$EN	\$M	\$F	\$B
14	-0.1	52	98	0.83	32	23	40	0.09	0.35	+19	102	83	103

## KG JUSTIFIED 3023



## COLEMAN JUSTIFIED 132

REG: +\*20155632

Connealy Judgment  
**KG Justified 3023**  
 KG Miss Magic 1443

S A V Resource 1441  
**Coleman Donna 504**  
 Coleman Donna 714

Connealy Consensus 7229  
 Entrine of Conanga 9876  
 Sitz Wisdom 481T  
 KG Miss Magic 3528

Rito 707 of Ideal 3407 7075  
 S A V Blackcap May 4136  
 Connealy Onward  
 Coleman Donna 386

CED	BW	WW	YW	SC	DOC	MILK
11	0.8	69	124	1.62	27	27
CW	MARB	RE	\$EN	\$M	\$F	\$B
49	0.64	0.39	-18	76	87	132

We have heavily used our outstanding Coleman Justified bull as of recent. His calves come perfectly sized, are energetic and well made. What we find most impressive is the high growth and rate of gain these calves exhibit. We are very happy with the bulls and the females are beautiful, maternal, with correct udders just like their impressive Donna 504 granddam. We will continue to extensively use our Coleman Justified bull in our program as his progeny fit the bill for correctly made, high performing, problem free cattle. Semen available.

**3/4 Brothers**

**Coleman Justified 132 x Cedar Wind 568 - Lots 64, 117**  
**Coleman Justified 132 x Gnerer Rocky 8663 - Lots 52, 87, 126**  
**Coleman Justified 132 x VDAR Winston 2165 - Lots 79, 105**

## VDAR BLASTOFF 2762

REG: \*20410782

V D A R Stout 6287  
**VDAR 4321 Blastoff 7230**  
 V D A R Beauty 4321

V D A R Cedar Wind 5126  
**VDAR Polly 9220**  
 V D A R Polly 7927

V D A R Stout 1623  
 V D A R Elluna 5378  
 Koupal Juneau 797  
 V D A R Beauty 0355

V D A R Cedar Wind 8111  
 V D A R Beauty 4321  
 Wulffs Ext 6106  
 V D A R Polly 9697

CED	BW	WW	YW	SC	DOC	MILK
5	3.5	67	121	1.78	26	9
CW	MARB	RE	\$EN	\$M	\$F	\$B
49	0.48	0.14	-5	67	103	139

We were excited to add some more of VDAR Beauty 4321 progeny to our herd, the most elite donor cow to walk the pastures of the Van Dyke Angus Ranch. Blast Off will correct feet and udders while adding pounds and thickness to his calves.

## VDAR CEDAR WIND 5689

REG: \*19447315

Cole Creek Cedar Ridge IV  
**V D A R Cedar Wind 8111**  
 V D A R Chloe 9727

Koupal Juneau 797  
**V D A R Beauty 4321**  
 V D A R Beauty 0355

Cole Creek Black Cedar 46P  
 Cole Creek Clovanada 49S  
 V D A R Really Windy 4097  
 V D A R Chloe 6320

O C C Juneau 807J  
 Koupals Elba 187  
 V D A R Really Windy 4097  
 V D A R Beauty 8633

CED	BW	WW	YW	SC	DOC	MILK
10	1.9	52	82	1.76	15	30
CW	MARB	RE	\$EN	\$M	\$F	\$B
14	0.05	0.22	4	72	41	59

At the 2020 VDAR Bulls Sale we were able to see VDAR Beauty 4321 in the flesh and she is a standout. She has perfect, uniform udders and is fleshy, feminine, deep, with a wide base. Our favorite mothers on the ranch are hands down our Cedar Wind 8111 progeny. We are ecstatic to have the cross of two Angus greats and watch the offspring grow and perform in our herd. The 568 calves come easy and are complete in every way!

**3/4 Brothers - VDAR Cedar Wind 568 x LD Capitalist 316 - Lots 106, 112, 20**

## NEW THIS YEAR!

You can choose from two online bidding options:

[www.DVAuction.com](http://www.DVAuction.com)

- OR -

[www.LivestockMarket.com](http://www.LivestockMarket.com)

# DVAuction

[www.dvauction.com](http://www.dvauction.com)

Watch & Bid online for FREE!

### Can't make the sale?

*Let DVAuction bring the sale to you!*

### Busy during the sale?

*Let DVAuction represent your bid!*

### Visit [www.dvauction.com](http://www.dvauction.com) and Register!

It's as easy as 1, 2, 3...

1. Create an account at [www.dvauction.com](http://www.dvauction.com) under the "create new account" tab
2. Apply for bidding by clicking "apply for bidding" in the upper left corner of your screen, at least 24 hours prior to the auction
3. Tune into the sale and make your purchases!

For General Questions Please Contact Our Office:  
(402) 316-5460 or [support@dvauction.com](mailto:support@dvauction.com)

\*High Speed Internet Access Required



Go to [LivestockMarket.com](http://LivestockMarket.com) or simply download the LivestockMarket app.



Log in or create an account and go to "On-Site Auctions" page and select "Production Sales".

Locate the sale you would like to bid on and select "Terms and Conditions" to register for the sale.

- Once you're registered, you'll receive updates and notifications leading up to the date of the sale.

You can place pre-bids at any time leading up to the sale date.

- Once you set your pre-bid you'll automatically be the high bidder until your bid is surpassed.

On the day of the sale, go to the sale page and click "Enter Auction" to join the live sale in real time.

When the sale is complete, call the seller directly to manage payment and transportation.

# ANGUS. ONLY ANGUS.

There's only one DNA profile created specifically for Angus cattle.

Angus GS™ is the new standard in genetic testing for Angus cattle. Created by Angus Genetics, the profile is purely Angus DNA. So it will have better predictability and deliver more power and accuracy than any previous generation genomic enhanced EPD, and at greater value. Visit [angus.org/agi](http://angus.org/agi) for the test that only Angus Genetics could create.

FOR ANGUS. BY ANGUS.

# ANGUSGS

Powered by Neogen GeneSeek

Lot  
**1**

**GNERER STEP UP 5821**

DOB: 01/26/25 AAA: 21296608

GED	BW	WW	WN RATIO	YW	SC	DOC	ANGUS6S
13	-1.2	70	107	125	1.24	30	

G A R Big Step K715  
**EZAR Step Up 9178**  
Basin Lucy 4261

G A R Sure Fire  
Chair Rock Prophet 3131  
EXAR Denver 2002B  
Basin Lucy 1022

G A R Black Granite 6857  
**Gnerer Granite Girl 857-0256**  
Gnerer Pride 683

Connealy Black Granite  
Gnerer Canyon 6595 857G  
Gnerer Up Side 3923  
Gnerer Prides Date 540 S

MILK	FL	CW	MARB	RE	\$EN	\$M	\$F	\$B
34	1.18	45	0.96	0.68	-13	108	81	146

BW WT
70
205 WT
757
DAM PROD.
4@103



Lot  
**2**

**GNERER PLAYBOOK 5831**

DOB: 02/02/25 AAA: 21296515

GED	BW	WW	WN RATIO	YW	SC	DOC	ANGUS6S
9	0.4	51	96	98	1.36	16	

Basin Payweight 1682  
**TEX Playbook 5437**  
Rita 1C43 of 9M26 Complete

Basin Payweight 006S  
21AR O Lass 7017  
Summitcrest Complete 1P55  
Rita 9M26 of Rita 5F56 Pred

Connealy Black Granite  
**Gnerer Black Granite 9072**  
Gnerer Dellas Ndy 923 M

Connealy Consensus 7229  
Eura Elga of Conanga 9109  
Boyd New Day 8005  
Gnerer Mar Del Survivor

MILK	FL	CW	MARB	RE	\$EN	\$M	\$F	\$B
37	1.21	30	0.8	0.59	-7	81	73	133

BW WT
74
205 WT
678
DAM PROD.
5@97



Lot  
**3**

**GNERER DOC RYAN 5046**

DOB: 02/08/25 AAA: 21411459

GED	BW	WW	WN RATIO	YW	SC	DOC	ANGUS6S
5	2	83	103	140	1.21	26	

Casino Bomber N33  
**T/D Doc Ryan 049**  
T/D Ruby of Tiffany 824

KM Broken Bow 002  
Casino Annie K48  
G A R Phenom 7953  
B/R Ruby of Tiffany 688

Centennial Excitement 794  
**Beulah 20-634**  
Beulah 16-336

Basin Excitement  
Prairie Bessie 07-5142  
Centennial Really Windy 070  
Beulah 13-485

MILK	FL	CW	MARB	RE	\$EN	\$M	\$F	\$B
27	1.03	72	0.62	0.76	-26	73	113	164

BW WT
82
205 WT
691
DAM PROD.
4@101



Lot  
**4**

**GNERER BLASTOFF 5854**

DOB: 02/15/25 AAA: 21312405

GED	BW	WW	WN RATIO	YW	SC	DOC	ANGUS6S
5	2.4	56	104	96	1.35	12	

VDAR 4321 Blastoff 7230  
**VDAR Blastoff 2762**  
VDAR Polly 9220

V D A R Stout 6287  
V D A R Beauty 4321  
V D A R Cedar Wind 5126  
V D A R Polly 7927

Gnerer Really Windy 3601  
**Gnerer Windy Girl 689**  
Gnerer Dellas Ndy 923 M

V D A R Really Windy 4097  
Gnerer Black Rose SA04 G  
Boyd New Day 8005  
Gnerer Mar Del Survivor

MILK	FL	CW	MARB	RE	\$EN	\$M	\$F	\$B
12	1.24	33	0.39	0.23	2	76	83	117

BW WT
87
205 WT
734
DAM PROD.
8@103

Lot  
**5**

**GNERER STEP UP 5036**

DOB: 02/04/25 AAA: 21411512

GED	BW	WW	WN RATIO	YW	SC	DOC	ANGUS6S
0	2	58	99	99	1.39	12	

G A R Big Step K715  
**EZAR Step Up 9178**  
Basin Lucy 4261

G A R Sure Fire  
Chair Rock Prophet 3131  
EXAR Denver 2002B  
Basin Lucy 1022

Gnerer Blk Cedar Prize 4112  
**Gnerer Miss BC Prize 923**  
Gnerer Lucy M 763

V D A R Black Cedar 8380  
Gnerer Best Time Entp 112  
S A V 8180 Traveler 004  
G N A I R Lucy 521

MILK	FL	CW	MARB	RE	\$EN	\$M	\$F	\$B
27	0.99	55	1.03	0.61	-3	73	108	175

BW WT
83
205 WT
663
DAM PROD.
5@102



“Courage is being scared to death, but saddling up anyways.”

- John Wayne



Lot  
**6**

**GNERER LUCKY 7 - 5857**

DOB: 02/16/25 AAA: 21254741

CED	BW	WW	WN RATIO	YW	SC	DOC	ANGUS3S
6	1.3	67	100	113	1.44	27	
							<b>BW WT</b>
							94
							<b>205 WT</b>
							700
							<b>DAM PROD.</b>
							5@99

T/D Doc Ryan 049  
**Herbster Lucky Seven 256**  
Herbster Blackbird 616

V D A R Clarence 2285  
**Gnerer Clare 986**  
Gnerer Lucy 4926

Casino Bomber N33  
T/D Ruby of Tiffany 824  
Herbster Sportsman 232  
Sandpoint Blackbird 8809

Ginger Hill Treasure 233  
V D A R Elluna 3105  
Gnerer Right Answer 114  
Gnerer Lucy 926 M

MILK	FL	CW	MARB	RE	\$EN	\$M	\$F	\$B
24	1.12	46	0.69	0.79	3	77	87	145

Lot  
**7**

**GNERER 914 JUSTIFIED 5062**

DOB: 02/13/25 AAA: 21411612

CED	BW	WW	WN RATIO	YW	SC	DOC	ANGUS3S
2	2	66	97	113	0.43	29	
							<b>BW WT</b>
							72
							<b>205 WT</b>
							635
							<b>DAM PROD.</b>
							7@93

KG Justified 3023  
**GDAR Justified 914**  
GDAR Forever Lady 7533

Hoover Dam  
**Gnerer Lucy Dam 493**  
Gnerer Lucy 903 M

Connealy Judgment  
KG Miss Magic 1443  
Sitz Reinvested 636a  
GDAR Forever Lady 1138

SydGen C C & 7  
Erica of Ellston C124  
VDAR Enterprise 2059  
G N A I R Lucy 521

MILK	FL	CW	MARB	RE	\$EN	\$M	\$F	\$B
22	1.13	32	0.69	0.14	-13	77	61	113

Lot  
**8**

**GNERER 33 CAPITLST 5018**

DOB: 01/29/25 AAA: 21411371

CED	BW	WW	WN RATIO	YW	SC	DOC	ANGUS3S
14	-0.7	67	110	108	0.97	23	
							<b>BW WT</b>
							60
							<b>205 WT</b>
							732
							<b>DAM PROD.</b>
							1@110

LD Capitalist 316  
**Gnerer 316 Cap 3033**  
Gnerer Patty 167

Coleman Banker 9215  
**Gnerer Lucy 305**  
Gnerer Lucy 116

Connealy Capitalist 028  
LD Dixie Erica 2053  
Deep Creek 38 Special 900  
Patty 19-747

Coleman Bravo 6313  
Coleman Donna 4203  
VDAR Showdown 7236  
Gnerer Windy Prize 612

MILK	FL	CW	MARB	RE	\$EN	\$M	\$F	\$B
20	1.11	47	0.86	0	-9	80	89	140

Lot  
**9**

**GNERER 914 JUSTIFIED 5045**

DOB: 02/07/25 AAA: 21411599

CED	BW	WW	WN RATIO	YW	SC	DOC	ANGUS3S
11	0.7	64	99	111	1.49	17	
							<b>BW WT</b>
							78
							<b>205 WT</b>
							660
							<b>DAM PROD.</b>
							3@104

KG Justified 3023  
**GDAR Justified 914**  
GDAR Forever Lady 7533

Gnerer Rocky 8663  
**Gnerer Bando 166**  
Gnerer Miss BC Prize 830

Connealy Judgment  
KG Miss Magic 1443  
Sitz Reinvested 636a  
GDAR Forever Lady 1138

K C F Bennett Boulder  
Gnerer Uptown Girl 663  
Gnerer Blk Cedar Prize 4112  
Gnerer Windy Bando 581

MILK	FL	CW	MARB	RE	\$EN	\$M	\$F	\$B
26	1.15	49	0.06	0.59	-14	86	88	112

Lot  
**10**

**GNERER DOC RYAN 5853**

DOB: 02/14/25 AAA: 21254745

CED	BW	WW	WN RATIO	YW	SC	DOC	ANGUS3S
8	0.6	74	116	115	0.98	19	
							<b>BW WT</b>
							79
							<b>205 WT</b>
							812
							<b>DAM PROD.</b>
							4@105

Casino Bomber N33  
**T/D Doc Ryan 049**  
T/D Ruby of Tiffany 824

Gnerer Winston 7571  
**Gnerer Winny Girl 571-0264**  
Gnerer Capitalist 7413

KM Broken Bow 002  
Casino Annie K48  
G A R Phenom 7953  
B/R Ruby of Tiffany 688

V D A R Winston 2165  
Gnerer Prediction 571  
Gnerer Capitalist 5364  
Gnerer Hoover Dam 4713

MILK	FL	CW	MARB	RE	\$EN	\$M	\$F	\$B
30	1	53	0.98	0.61	-24	73	83	152

Lot  
**11**

**GNERER STEP UP 5047**

DOB: 02/08/25 AAA: 21411768

CED	BW	WW	WN RATIO	YW	SC	DOC	ANGUS3S
-6	5	63	101	104	1.51	26	
							<b>BW WT</b>
							94
							<b>205 WT</b>
							672
							<b>DAM PROD.</b>
							7@99

G A R Big Step K715  
**EZAR Step Up 9178**  
Basin Lucy 4261

Gnerer Windy Prize 3903  
**Gnerer Windy Prize 612**  
Gnerer Lucy 450

G A R Sure Fire  
Chair Rock Prophet 3131  
EXAR Denver 2002B  
Basin Lucy 1022

V D A R Really Windy 4097  
Gnerer Lucy 903 M  
VDAR Enterprise 2059  
Gnerer Lucy 259

MILK	FL	CW	MARB	RE	\$EN	\$M	\$F	\$B
19	1.02	40	0.26	1	-12	62	82	119



Lot  
**12**

**GNERER STEP UP 5822**

DOB: 01/30/25 AAA: 21296831

CED	BW	WW	WN RATIO	YW	SC	DOC	ANGUS3S
6	1.4	57	91	97	1.14	26	
							<b>BW WT</b>
							85
							<b>205 WT</b>
							648
							<b>DAM PROD.</b>
							6@101

G A R Big Step K715  
**EZAR Step Up 9178**  
Basin Lucy 4261

Gnerer Really Windy 3601  
**Gnerer Windy Girl 8003**  
Gnerer Miss Upside 588

G A R Sure Fire  
Chair Rock Prophet 3131  
EXAR Denver 2002B  
Basin Lucy 1022

V D A R Really Windy 4097  
Gnerer Black Rose SA04 G  
Gnerer Up Side 3923  
Gnerer Date Line 902

MILK	FL	CW	MARB	RE	\$EN	\$M	\$F	\$B
29	1.16	39	0.77	0.58	0	99	81	136

Lot  
**13**

**GNERER 316 CAPITLST C33 5044**

DOB: 02/07/25 AAA: 21462458

CED	BW	WW	WN RATIO	YW	SC	DOC	ANGUS3S
10	0.4	77	117	125	1.4	12	
							<b>BW WT</b>
							71
							<b>205 WT</b>
							781
							<b>DAM PROD.</b>
							1@117

LD Capitalist 316  
**Gnerer 316 Cap 3033**  
Gnerer Patty 167

V D A R Winston 2165  
**Gnerer Marian 3121**  
Gnerer Windy ST 034

Connealy Capitalist 028  
LD Dixie Erica 2053  
Deep Creek 38 Special 900  
Patty 19-747

V D A R Churchhill 1063  
V D A R Lass 3114  
V D A R Stout 1623  
Gnerer Tressa Wind 66

MILK	FL	CW	MARB	RE	\$EN	\$M	\$F	\$B
26	1.16	66	0.63	0.91	-30	58	111	165

What is the “#” behind some of the Gnerer Angus cows? That means they are Pathfinder dams! The Pathfinder Program in the Angus Association identifies superior Angus cows based upon recorded performance traits that are economically important to efficient beef production. To qualify for the report, a cow must have produced a calf measured through AHIR in the past 18 months.

Lot  
**14**

**GENER JUSTIFIED 914 - 5817**

DOB: 01/29/25 AAA: 21255135

CED	BW	WW	WN RATIO	YW	SC	DOC	ANGUS <sup>SS</sup>
9	-0.3	79	122	139	1.35	36	BW WT

KG Justified 3023  
**GDAR Justified 914**  
 GDAR Forever Lady 7533  
 V D A R Stout 1623  
**Gnerer Stout 0146**  
 Gnerer Bismark 55

Connealy Judgment  
 KG Miss Magic 1443  
 Sitz Reinvested 636a  
 GDAR Forever Lady 1138  
 V D A R Black Cedar 8380  
 V D A R Lass 0464  
 Gnerer Bismarck 229  
 Gnerer Right Answer 398

80
205 WT
865
DAM
PROD.
4@104

MILK	FL	CW	MARB	RE	SEN	SM	SF	SB
27	1.08	62	0.22	0.54	-24	84	109	137



RLG

14

Lot  
**15**

**GENER 31 CAPITLST 316 5068**

DOB: 02/14/25 AAA: 21411324

CED	BW	WW	WN RATIO	YW	SC	DOC	ANGUS <sup>SS</sup>
4	1.7	83	116	134	0.94	13	BW WT

LD Capitalist 316  
**Gnerer 316 Cap 3031**  
 Gnerer Blackbird 157  
 V D A R Clarence 2285  
**Gnerer Quality 117 #**  
 Gnerer Marian 760

Connealy Capitalist 028  
 LD Dixie Erica 2053  
 Deep Creek 38 Special 900  
 Blackbird 19-247  
 Ginger Hill Treasure 233  
 V D A R Elluna 3105  
 V D A R Winston 2165  
 Gnerer Right Quality 584

84
205 WT
761
DAM
PROD.
3@110

MILK	FL	CW	MARB	RE	SEN	SM	SF	SB
20	1.2	53	0.68	0.26	-30	61	83	130



MILLARS QUEEN LASS 5273

PGD to Lots  
16, 29, 41, 95

Lot  
**16**

**GENER DUKE 5820**

DOB: 01/29/25 AAA: 21255148

CED	BW	WW	WN RATIO	YW	SC	DOC	ANGUS <sup>SS</sup>
11	-0.7	76	103	132	0.61	22	BW WT

B Bar Windy 7 3575  
**Millars Duke 816**  
 Millars Queen Lass 5273  
 Gnerer Up Side 3923  
**Gnerer Pride 678**  
 Gnerer Proudful 219

B Bar Windy 79  
 B Bar Eulima 357  
 Tombstone 050  
 Millars Queen Lass 3276  
 Sitz Upside 547W  
 Gnerer Dellas Ndy 923 M  
 HA Program 5652  
 Gnerer Dannys Sunset 527 G

74
205 WT
731
DAM
PROD.
8@98

MILK	FL	CW	MARB	RE	SEN	SM	SF	SB
30	1.12	74	0.28	0.55	-38	62	125	154



RLG

16

Lot  
**17**

**GENER LUCKY SEVEN 5052**

DOB: 02/11/25 AAA: 21411587

CED	BW	WW	WN RATIO	YW	SC	DOC	ANGUS <sup>SS</sup>
0	2.9	84	119	143	1.26	20	BW WT

T/D Doc Ryan 049  
**Herbster Lucky Seven 256**  
 Herbster Blackbird 616  
 CTS Remedy 1T01  
**Gnerer Miss Clare 97**  
 Gnerer Marian 703

Casino Bomber N33  
 T/D Ruby of Tiffany 824  
 Herbster Sportsman 232  
 Sandpoint Blackbird 8809  
 Connealy Thunder  
 CTS 7V03 Bellemere Maid 9T02  
 V D A R Winston 2165  
 Gnerer Miss Ebony 261

93
205 WT
778
DAM
PROD.
4@106

MILK	FL	CW	MARB	RE	SEN	SM	SF	SB
21	1.1	66	1.4	0.67	-24	72	106	194



RLG

17

Lot  
**18**

**GENER PLAYBOOK 5841**

DOB: 02/07/25 AAA: 21296513

CED	BW	WW	WN RATIO	YW	SC	DOC	ANGUS <sup>SS</sup>
4	3.2	69	99	114	0.24	26	BW WT

Basin Payweight 1682  
**TEX Playbook 5437**  
 Rita 1C43 of 9M26 Complete  
 Gnerer Black Granite 6857  
**Gnerer Granite Girl 857-098**  
 Gnerer Ponderosa 407

Basin Payweight 006S  
 21AR O Lass 7017  
 Summitcrest Complete 1P55  
 Rita 9M26 of Rita 5F56 Pred  
 Connealy Black Granite  
 Gnerer Canyon 6595 857G  
 VDAR Enterprise 2059  
 Gnerer Ponderosa 269

102
205 WT
699
DAM
PROD.
3@104

MILK	FL	CW	MARB	RE	SEN	SM	SF	SB
33	1.05	46	0.43	0.51	-6	92	83	123

**Questions? Contact us!**

**Chris** (406) 935-3183 krista.gnerer@hotmail.com  
**Joe** (406) 498-6113 rjgnerer@gmail.com  
**Steve** (406) 860-8081 gnererelectric@gmail.com

Lot  
**19**

**GNERER MAGA 5102**

DOB: 03/02/25 AAA: 21411434

CED	BW	WW	WN RATIO	YW	SC	DOC	ANGUS <sup>SS</sup>
9	1.4	71	112	124	1.66	27	

VDAR Maga 7050  
**VDAR Maga 2042**  
V D A R Rita 6219

V D A R Cedar Wind 7000  
**Dakota Blossom 19-777 #**  
Dakota Blossom 17-458

V D A R Maga 3068  
V D A R Miss Wix 0336  
Ginger Hill Treasure 233  
V D A R Rita 3310

V D A R Cedar Wind 8111  
Koupal Ebonette 734  
Centennial Excitement 083  
Dakota Blossom 14-739

MILK	FL	CW	MARB	RE	SEN	SM	SF	SB
31	1.05	34	0.79	-0.18	-12	72	57	102

BW WT	82
205 WT	205
735	735
DAM PROD.	5@109



Lot  
**20**

**GNERER CEDAR WIND 568-5823**

DOB: 01/30/25 AAA: 21239725

CED	BW	WW	WN RATIO	YW	SC	DOC	ANGUS <sup>SS</sup>
7	3.1	80	118	140	1.87	26	

V D A R Cedar Wind 8111  
**VDAR Cedar Wind 5689**  
V D A R Beauty 4321

LD Capitalist 316  
**Gnerer Capitalist 316-39**  
Gnerer Cedar Girl 568-151

Cole Creek Cedar Ridge 1V  
V D A R Chloe 9727  
Koupal Juneau 797  
V D A R Beauty 0355

Connealy Capitalist 028  
LD Dixie Erica 2053  
VDAR Cedar Wind 5689  
Gnerer Pebbles 959

MILK	FL	CW	MARB	RE	SEN	SM	SF	SB
27	1.16	58	0.23	0.66	-30	71	89	126

BW WT	70
205 WT	205
839	839
DAM PROD.	1@118

Lot  
**21**

**GNERER STEP UP 5012**

DOB: 01/27/25 AAA: 21411538

CED	BW	WW	WN RATIO	YW	SC	DOC	ANGUS <sup>SS</sup>
4	1.6	59	105	99	1.69	19	

G A R Big Step K715  
**EZAR Step Up 9178**  
Basin Lucy 4261

Gnerer Blk Cedar Prize 4112  
**Gnerer Miss BC Prize 839 #**  
Gnerer Ponderosa 256

G A R Sure Fire  
Chair Rock Prophet 3131  
EXAR Denver 2002B  
Basin Lucy 1022

V D A R Black Cedar 8380  
Gnerer Best Time Entp 112  
Gnerer Enterprize 012 M  
Gnerer Ponderosa DyB 850S

MILK	FL	CW	MARB	RE	SEN	SM	SF	SB
30	1.08	37	0.97	0.25	-6	83	73	134

BW WT	87
205 WT	205
704	704
DAM PROD.	6@105

Lot  
**22**

**GNERER STEP UP 5850**

DOB: 02/13/25 AAA: 21296826

CED	BW	WW	WN RATIO	YW	SC	DOC	ANGUS <sup>SS</sup>
3	2.2	73	111	124	1.32	27	

G A R Big Step K715  
**EZAR Step Up 9178**  
Basin Lucy 4261

Gnerer Really Windy 3601  
**Gnerer Windy Girl 601-941**  
Gnerer Lass Teaka 061 M

G A R Sure Fire  
Chair Rock Prophet 3131  
EXAR Denver 2002B  
Basin Lucy 1022

V D A R Really Windy 4097  
Gnerer Black Rose SA04 G  
Gnerer Lucys 878 700 M  
Gnerer Teakas Mate 517

MILK	FL	CW	MARB	RE	SEN	SM	SF	SB
23	1.1	43	1.03	0.65	-23	83	74	144

BW WT	86
205 WT	205
779	779
DAM PROD.	5@101

Lot  
**23**

**GNERER 316 CAPITALIST 5066**

DOB: 02/14/25 AAA: 21411625

CED	BW	WW	WN RATIO	YW	SC	DOC	ANGUS <sup>SS</sup>
2	1.2	72	109	122	0.88	15	

Connealy Capitalist 028  
**LD Capitalist 316**  
LD Dixie Erica 2053

Gnerer Rocky 8663  
**Gnerer Beauty 13**  
Gnerer Miss BC Prize 922

S A V Final Answer 0035  
Prides Pita of Conanga 8821  
C A Future Direction 5321  
LD Dixie Erica Oar 0853

K C F Bennett Boulder  
Gnerer Uptown Girl 663  
Gnerer Blk Cedar Prize 4112  
Gnerer Beauty 587

MILK	FL	CW	MARB	RE	SEN	SM	SF	SB
21	1.31	53	0.24	0.19	-17	97	95	121

BW WT	85
205 WT	205
716	716
DAM PROD.	3@99

**GNERER ANGUS**

is PROUD to be COMMITTED to the momma cow!

We are thrilled to have earned the Maternal Plus Herd Status this year and to be 1 of only 55 herds in Montana to achieve that.



Lot  
**24**

**GNERER STEP UP 5836**

DOB: 02/06/25 AAA: 21296842

CED	BW	WW	WN RATIO	YW	SC	DOC	ANGUS65
7	0.6	62	96	114	1.13	20	

G A R Big Step K715  
**EZAR Step Up 9178**  
Basin Lucy 4261

G A R Sure Fire  
Chair Rock Prophet 3131  
EXAR Denver 2002B  
Basin Lucy 1022

Gnerer Really Windy 3601  
**Gnerer Windy Girl 7364**  
Gnerer Lucy 364

V D A R Really Windy 4097  
Gnerer Black Rose SA04 G  
V D A R Really Windy 4097  
Gnerer Lucy 926 M

MILK	FL	CW	MARB	RE	SEN	SM	SF	SB
29	1.11	41	0.48	0.54	-23	66	80	123

BW WT
80
205 WT
672
DAM PROD.
6@98

**GNERER ANGUS**



[WWW.GNERERANGUS.COM](http://WWW.GNERERANGUS.COM)



SCAN TO GO TO OUR WEBSITE

Lot  
**25**

**GNERER 31 CAPITLST 316 5082**

DOB: 02/22/25 AAA: 21411290

CED	BW	WW	WN RATIO	YW	SC	DOC	ANGUS65
4	0	70	117	120	1.15	21	

LD Capitalist 316  
**Gnerer 316 Cap 3031**  
Gnerer Blackbird 157

Connealy Capitalist 028  
LD Dixie Erica 2053  
Deep Creek 38 Special 900  
Blackbird 19-247

Gnerer Titan 0133  
**Gnerer Miss Marian 257**  
Gnerer Marian 4C 051

Mc Cumber 5005 Titan 8154  
Gnerer Extra Prize 399  
V D A R Winston 2165  
Gnerer YT Prize 732

MILK	FL	CW	MARB	RE	SEN	SM	SF	SB
24	1.17	64	0.36	0.35	-23	74	113	146

BW WT
77
205 WT
769
DAM PROD.
2@115



Lot  
**26**

**GNERER BLASTOFF 5882**

DOB: 02/26/25 AAA: 21312431

CED	BW	WW	WN RATIO	YW	SC	DOC	ANGUS65
7	1.9	60	107	102	1.3	17	

VDAR 4321 Blastoff 7230  
**VDAR Blastoff 2762**  
VDAR Polly 9220

V D A R Stout 6287  
V D A R Beauty 4321  
V D A R Cedar Wind 5126  
V D A R Polly 7927

V D A R Clarence 2285  
**Gnerer Clare 910**  
Gnerer Generation 740

Ginger Hill Treasure 233  
V D A R Elluna 3105  
V A R Generation 2100  
Gnerer Black Rose NDY 853G

MILK	FL	CW	MARB	RE	SEN	SM	SF	SB
17	1.14	37	0.47	0.21	11	87	69	107

BW WT
88
205 WT
754
DAM PROD.
5@103



Lot  
**27**

**SEE SUPPLEMENT SHEET**

DOB: 01/24/25 AAA: 628254857

CED	BW	WW	WN RATIO	YW	SC	DOC	ANGUS65
			ET				

Basin Payweight 1682  
**Poss Maverick**  
Poss Pride 5163

Basin Payweight 006S  
21AR O Lass 7017  
Poss Hoover Dam 2509  
Poss Pride 9526

U-2 Coalition 206C  
**Gnerer Ida 30**  
Ida Extra 799 A A R

HF Syndicate 213Z  
U2 Erelite 109Z  
A A R Extra 814  
Cash Flow Ida 285 A A R

MILK	FL	CW	MARB	RE	SEN	SM	SF	SB

BW WT
85
205 WT
ET
DAM PROD.
1@103

**Flush brother to Lot 83!**



Lot  
**28**

**GNERER C- JUSTIFIED 5824**

DOB: 01/31/25 AAA: 21239702

CED	BW	WW	WN RATIO	YW	SC	DOC	ANGUS65
15	-1.2	78	117	145	1.8	27	

KG Justified 3023  
**Coleman Justified 132**  
Coleman Donna 504

Connealy Judgment  
KG Miss Magic 1443  
S A V Resource 1441  
Coleman Donna 714

VDAR Resilient 2171  
**Gnerer Resilience 316**  
Gnerer Cedar 568-149

Sitz Resilient 10208  
V D A R Lucy 8302  
VDAR Cedar Wind 5689  
Gnerer Windy Girl 924-9105

MILK	FL	CW	MARB	RE	SEN	SM	SF	SB
35	1.12	67	0.59	0.25	-38	66	102	144

BW WT
67
205 WT
827
DAM PROD.
1@117



Lot  
**29**

**GNERER DUKE 5060**

DOB: 02/12/25 AAA: 21411292

CED	BW	WW	WN RATIO	YW	SC	DOC	ANGUS <sup>SS</sup>
7	1.5	87	107	141	1.46	24	

B Bar Windy 7 3575  
**Millars Duke 816**  
Millars Queen Lass 5273  
  
Gnerer Clarence 972  
**Gnerer Marian 154**  
Gnerer Winny 909

B Bar Windy 79  
B Bar Eulima 357  
Tombstone 050  
Millars Queen Lass 3276  
  
V D A R Clarence 2285  
Gnerer Marian Corners 72  
V D A R Winston 2165  
Gnerer Rampage 772

BW WT
84
205 WT
701
DAM PROD.
3@100

MILK	FL	CW	MARB	RE	\$EN	\$M	\$F	\$B
29	1.09	55	0.54	0.09	-35	66	74	112

Lot  
**30**

**GNERER G017 BOMBER 5871**

DOB: 02/22/25 AAA: 21254732

CED	BW	WW	WN RATIO	YW	SC	DOC	ANGUS <sup>SS</sup>
2	2.4	75	100	133	1.56	21	

Vermilion Bomber G017  
**Vermilion G017 Bomber K190**  
Vermilion Lass 9538  
  
Hoover Dam  
**Gnerer Hoover Dam 4713**  
Gnerer Big Della G 713

Casino Bomber N33  
Vermilion Edwina 7078  
Vermilion Charge On  
Vermilion Lass 3574  
  
SydGen C C & 7  
Erica of Ellston C124  
Sitz Alliance 6595  
Gnerer Canyon G341

BW WT
88
205 WT
879
DAM PROD.
9@103

MILK	FL	CW	MARB	RE	\$EN	\$M	\$F	\$B
27	1.05	65	0.51	0.69	-35	46	113	157

Lot  
**31**

**GNERER STEP UP 5017**

DOB: 01/29/25 AAA: 21411766

CED	BW	WW	WN RATIO	YW	SC	DOC	ANGUS <sup>SS</sup>
7	1.2	63	97	110	0.92	22	

G A R Big Step K715  
**EZAR Step Up 9178**  
Basin Lucy 4261  
  
Gnerer Windy Prize 3903  
**Gnerer Windy Prize 617**  
Gnerer Ponderosa 283

G A R Sure Fire  
Chair Rock Prophet 3131  
EXAR Denver 2002B  
Basin Lucy 1022  
  
V D A R Really Windy 4097  
Gnerer Lucy 903 M  
Gnerer Enterprize 012 M  
Gnerer Ponderosa I F 012 S

BW WT
89
205 WT
646
DAM PROD.
6@95

MILK	FL	CW	MARB	RE	\$EN	\$M	\$F	\$B
23	1.18	25	0.97	0.28	-5	90	58	118



**ABSENTEE BIDDING MADE EASY!**

*If you can't make the sale in person, we have online bidding options or the Sale Day Reps you can leave your bids with and it will be handled with honesty and integrity.*

**SALE DAY REPRESENTATIVES**

- Chris Gnerer: 406-935-3183
- Joe Gnerer: 406-498-6113
- Greg Gnerer: 406-860- 0244
- Steve Gnerer: 406-860-8081
- Matt Wznick, Western Ag Reporter: 406-489-2414
- Jaramie McLean, TriState Livestock News: 406-853-3174

Calving heifers? Chasing kids?  
Can't get away?  
**WE GET IT.**

That's why we made it easy to bid online!  
You can choose from two online bidding options:

**DVAuction**  
Broadcasting Real-Time Auctions

[www.DVAuction.com](http://www.DVAuction.com)

- OR -

[www.LivestockMarket.com](http://www.LivestockMarket.com)

 **LivestockMarket.com**

Lot  
**32**

**GNERER MAVERICK 5873**

DOB: 02/23/25 AAA: 21254728

CED	BW	WW	WN RATIO	YW	SC	DOC	ANGUS
1	2.7	73	103	126	1.31	33	CS
							BW WT
							88
							205 WT
							724
							DAM
							PROD.
							5@104

Basin Payweight 1682  
**Poss Maverick**  
Poss Pride 5163  
  
K C F Bennett Boulder  
**Gnerer Pebbles 959**  
Gnerer Prediction 42

Basin Payweight 006S  
21AR O Lass 7017  
Poss Hoover Dam 2509  
Poss Pride 9526  
  
K C F Bennett TheRock A473  
K C F Miss 534 U431  
Gnerer Right Answer 119  
Gnerer Prediction 649 S

MILK	FL	CW	MARB	RE	SEN	SM	SF	SB
28	1.07	58	1.04	0.57	-29	62	113	184

Lot  
**33**

**GNERER CEDAR WIND 462-5883**

DOB: 02/26/25 AAA: 21312428

CED	BW	WW	WN RATIO	YW	SC	DOC	ANGUS
7	2.6	60	96	112	1.4	22	CS
							BW WT
							93
							205 WT
							674
							DAM
							PROD.
							4@101

V D A R Cedar Wind 8111  
**VDAR Cedar Wind 4628**  
V D A R Elluna 5858  
  
Tehama Tahoe B767  
**Gnerer Tahoe 011**  
Gnerer Winny Girl 8025

Cole Creek Cedar Ridge 1V  
V D A R Chloe 9727  
V D A R Black Train 1243  
VDAR Elluna 3765  
  
Tehama Upward Y238  
Tehama Mary Blackbird Y684  
V D A R Winston 2165  
Gnerer Right Girl 6517

MILK	FL	CW	MARB	RE	SEN	SM	SF	SB
29	1.11	35	0.16	0.35	-26	57	76	105

Lot  
**34**

**GNERER MAGA 5104**

DOB: 03/03/25 AAA: 21411582

CED	BW	WW	WN RATIO	YW	SC	DOC	ANGUS
6	1.8	57	105	107	0.11	16	CS
							BW WT
							86
							205 WT
							689
							DAM
							PROD.
							4@109

VDAR Maga 7050  
**VDAR Maga 2042**  
V D A R Rita 6219  
  
CTS Remedy 1T01  
**Gnerer Remy 913**  
Gnerer Lucy 044 M

V D A R Maga 3068  
V D A R Miss Wix 0336  
Ginger Hill Treasure 233  
V D A R Rita 3310  
  
Connealy Thunder  
CTS 7V03 Bellemer Maid 9T02  
VDAR Enterprise 2059  
G N A I R Lucy 521

MILK	FL	CW	MARB	RE	SEN	SM	SF	SB
27	1.01	37	0.23	0.27	-18	44	84	114

Lot  
**35**

**GNERER STEP UP 5838**

DOB: 02/06/25 AAA: 21296835

CED	BW	WW	WN RATIO	YW	SC	DOC	ANGUS
15	-2.6	59	103	103	0.85	17	CS
							BW WT
							70
							205 WT
							726
							DAM
							PROD.
							5@97

G A R Big Step K715  
**EZAR Step Up 9178**  
Basin Lucy 4261  
  
Gnerer Really Windy 3601  
**Gnerer Windy Girl 865**  
Gnerer Lucy 412

G A R Sure Fire  
Chair Rock Prophet 3131  
EXAR Denver 2002B  
Basin Lucy 1022  
  
V D A R Really Windy 4097  
Gnerer Black Rose SA04 G  
V D A R Cedar Wind 8111  
Gnerer Lucy 129

MILK	FL	CW	MARB	RE	SEN	SM	SF	SB
29	1.21	30	0.56	0.38	-6	81	72	114

Lot  
**36**

**GNERER 316 CAPITALIST 5010**

DOB: 01/27/25 AAA: 21411615

CED	BW	WW	WN RATIO	YW	SC	DOC	ANGUS
11	-1.1	57	101	98	0.15	27	CS
							BW WT
							76
							205 WT
							676
							DAM
							PROD.
							3@102

Connealy Capitalist 028  
**LD Capitalist 316**  
LD Dixie Erica 2053  
  
VDAR Showdown 7236  
**Gnerer Lucy 118**  
Gnerers901 Prince Corner501

S A V Final Answer 0035  
Prides Pita of Conanga 8821  
C A Future Direction 5321  
LD Dixie Erica Oar 0853  
  
V D A R Sonny Boy 1194  
V D A R Forever Lady 1409  
V D A R Four Corners 8232  
Gnerer Lucy 901 M

MILK	FL	CW	MARB	RE	SEN	SM	SF	SB
27	1.15	48	0.48	0.31	-8	77	90	131

Lot  
**37**

**GNERER STEP UP 5828**

DOB: 02/03/25 AAA: 21296839

CED	BW	WW	WN RATIO	YW	SC	DOC	ANGUS
6	-0.2	48	89	82	1.35	11	CS
							BW WT
							77
							205 WT
							632
							DAM
							PROD.
							7@101

G A R Big Step K715  
**EZAR Step Up 9178**  
Basin Lucy 4261  
  
Quaker Hill Rampage 0A36  
**Gnerer Rampage 770**  
Gnerer Quality Lass 038 C

G A R Sure Fire  
Chair Rock Prophet 3131  
EXAR Denver 2002B  
Basin Lucy 1022  
  
MCC Daybreak  
QHF Blackcap 6E2 of4V16 4355  
TC Franklin 619  
Gnerer Blk Lassie 887C

MILK	FL	CW	MARB	RE	SEN	SM	SF	SB
35	1.14	24	0.94	0.42	5	93	57	119

Lot  
**38**

**GNERER 3005 COALITION 5081**

DOB: 02/22/25 AAA: 21411465

CED	BW	WW	WN RATIO	YW	SC	DOC	ANGUS
11	-1.4	46	100	86	1.24	14	CS
							BW WT
							77
							205 WT
							654
							DAM
							PROD.
							3@115

U-2 Coalition 206C  
**Gnerer Coalition 3005**  
Ida Extra 799 A A R  
  
Deep Creek 38 Special 900  
**Gnerer Blackbird 157 #**  
Blackbird 19-247

HF Syndicate 213Z  
U2 Erelite 109Z  
A A R Extra 814  
Cash Flow Ida 285 A A R  
  
Baldrige 38 Special  
Deep Creek Rev Princess 742  
Sitz Unmistakable 11796  
M C Blackbird 12-915

MILK	FL	CW	MARB	RE	SEN	SM	SF	SB
21	1.21	35	0.6	-0.02	5	88	81	120



Lot  
**39**

**GNERER STEP UP 5829**

DOB: 02/04/25 AAA: 21296856

CED	BW	WW	WN RATIO	YW	SC	DOC	ANGUS
0	2	68	106	113	1.37	19	CS
							BW WT
							89
							205 WT
							755
							DAM
							PROD.
							8@103

G A R Big Step K715  
**EZAR Step Up 9178**  
Basin Lucy 4261  
  
V D A R Cedar Wind 8111  
**Gnerer Cedar Girl 606**  
Gnerer Della 374

G A R Sure Fire  
Chair Rock Prophet 3131  
EXAR Denver 2002B  
Basin Lucy 1022  
  
Cole Creek Cedar Ridge 1V  
V D A R Chloe 9727  
Gnerer Right Answer 119  
Gnerer Della 908 G

MILK	FL	CW	MARB	RE	SEN	SM	SF	SB
23	1.18	41	0.45	0.58	-5	86	85	126



PGD to Lots  
27, 32, 57, 83, 90, 111

PGD to Lots  
1, 5, 11, 12, 21, 22, 24, 31, 35, 37, 39, 43, 50,  
59, 60, 61, 68, 85, 91, 93, 119

Lot  
**40**

**GNERER 914 JUSTIFIED 5021**

DOB: 01/30/25 AAA: 21411436

CED	BW	WW	WN RATIO	YW	SC	DOC	ANGUS
12	0.5	68	113	123	1.74	27	SS

KG Justified 3023  
**GDAR Justified 914**  
GDAR Forever Lady 7533

Janssen Cartwright 9105  
**Gnerer Canyon 355**  
Gnerer B Granite 4038/646

Connealy Judgment  
KG Miss Magic 1443  
Sitz Reinvested 636a  
GDAR Forever Lady 1138

S A V President 6847  
Janssen Madame Pride 5102  
Gnerer Black Granite 4038  
Gnerer Hoover Dam 4713

BW WT
68
205 WT
753
DAM PROD.
1@113

MILK	FL	CW	MARB	RE	\$EN	\$M	\$F	\$B
29	1.15	47	0.24	0.24	-16	87	76	103



RLG 40

Lot  
**41**

**GNERER DUKE 816 -5813**

DOB: 01/27/25 AAA: 21332820

CED	BW	WW	WN RATIO	YW	SC	DOC	ANGUS
8	0.3	71	111	125	1.11	16	SS

B Bar Windy 7 3575  
**Millars Duke 816**  
Millars Queen Lass 5273

Gnerer Up Side 3923  
**Gnerer Ponderosa 6812**  
Gnerers Miss Ponderosa S352

B Bar Windy 79  
B Bar Eulima 357  
Tombstone 050  
Millars Queen Lass 3276

Sitz Upside 547W  
Gnerer Deltas Ndy 923 M  
Sitz Alliance 9800  
Gnerer Miss Right 013 S 013

BW WT
82
205 WT
789
DAM PROD.
8@106

MILK	FL	CW	MARB	RE	\$EN	\$M	\$F	\$B
35	1.12	50	0.16	0.22	-29	61	81	101

Lot  
**45**

**GNERER TAHOE 123 - 5800**

DOB: 01/19/25 AAA: 21239701

CED	BW	WW	WN RATIO	YW	SC	DOC	ANGUS
13	-2.3	51	107	100	0.51	12	SS

Tehama Tahoe B767  
**Gnerer Tahoe 0123**  
Gnerer Rose 531

Gnerer Up Side 3923  
**Gnerer Uptown Girl 799**  
Gnerer Pride 461

Tehama Upward Y238  
Tehama Mary Blackbird Y684  
Basin Payweight 1682  
Gnerer Black Rose 871g

Sitz Upside 547W  
Gnerer Deltas Ndy 923 M  
Gnerer Right Answer 114  
Gnerer Prides Date 540 S

BW WT
76
205 WT
757
DAM PROD.
7@101

MILK	FL	CW	MARB	RE	\$EN	\$M	\$F	\$B
27	1.22	38	0.77	0.2	-2	78	84	135



RLG 42

Lot  
**42**

**GNERER 316 CAPITALIST 5027**

DOB: 01/31/25 AAA: 21411630

CED	BW	WW	WN RATIO	YW	SC	DOC	ANGUS
2	2.8	74	113	119	1.23	28	SS

Connealy Capitalist 028  
**LD Capitalist 316**  
LD Dixie Erica 2053

Gnerer Rocky 8663  
**Gnerer Sunset 156**  
Gnerer Miss Clare 815

S A V Final Answer 0035  
Prides Pita of Conanga 8821  
C A Future Direction 5321  
LD Dixie Erica Oar 0853

K C F Bennett Boulder  
Gnerer Uptown Girl 663  
V D A R Clarence 2285  
Gnerer Sunset Corner 67

BW WT
95
205 WT
752
DAM PROD.
3@104

MILK	FL	CW	MARB	RE	\$EN	\$M	\$F	\$B
21	1.2	61	0.44	0.69	-8	96	109	150

Lot  
**43**

**GNERER STEPUP 5814**

DOB: 01/27/25 AAA: 21296825

CED	BW	WW	WN RATIO	YW	SC	DOC	ANGUS
9	-0.5	48	89	90	0.79	26	SS

G A R Big Step K715  
**EZAR Step Up 9178**  
Basin Lucy 4261

Gnerer Really Windy 3601  
**Gnerer Windy Girl 601-999**  
Gnerer Canyon 280

G A R Sure Fire  
Chair Rock Prophet 3131  
EXAR Denver 2002B  
Basin Lucy 1022

V D A R Really Windy 4097  
Gnerer Black Rose SA04 G  
Gnerer Enterprize 012 M  
Gnerer 6595 991 G

BW WT
85
205 WT
628
DAM PROD.
5@99

MILK	FL	CW	MARB	RE	\$EN	\$M	\$F	\$B
26	1.06	40	0.5	0.58	7	81	91	133



RLG 43

Lot  
**44**

**GNERER 316 CAPITALIST 5042**

DOB: 02/06/25 AAA: 21411644

CED	BW	WW	WN RATIO	YW	SC	DOC	ANGUS
10	-0.8	57	100	104	0.38	24	SS

Connealy Capitalist 028  
**LD Capitalist 316**  
LD Dixie Erica 2053

Gnerer Rocky 8112  
**Gnerer Windy Girl 0158**  
Gnerer Windy Girl 558

S A V Final Answer 0035  
Prides Pita of Conanga 8821  
C A Future Direction 5321  
LD Dixie Erica Oar 0853

K C F Bennett Boulder  
Gnerer Best Time Entp 112  
Gnerer Really Windy 3601  
Gnerer Easy Pride 105

BW WT
78
205 WT
667
DAM PROD.
4@102

MILK	FL	CW	MARB	RE	\$EN	\$M	\$F	\$B
21	1.19	50	0.94	0.61	-10	70	104	167

Lot  
**46**

**GNERER 33 CAPITLST 5002**

DOB: 01/23/25 AAA: 21411426

CED	BW	WW	WN RATIO	YW	SC	DOC	ANGUS63
15	-2.9	58	105	108	1.66	19	

LD Capitalist 316  
**Gnerer 316 Cap 3033**  
Gnerer Patty 167

V D A R Winston 2165  
**Gnerer Marian 366**  
Gnerer Ponderosa 0119

Connealy Capitalist 028  
LD Dixie Erica 2053  
Deep Creek 38 Special 900  
Patty 19-747

V D A R Churchill 1063  
V D A R Lass 3114  
Gnerer Rocky 8112  
Gnerer Marian 702

BW WT
60
205 WT
702
DAM
PROD.
1@105

MILK	FL	CW	MARB	RE	\$EN	\$M	\$F	\$B
29	1.11	55	0.54	0.62	-21	56	105	154

Lot  
**47**

**GNERER CAPITALIST 316 - 5815**

DOB: 01/28/25 AAA: 21239724

CED	BW	WW	WN RATIO	YW	SC	DOC	ANGUS63
12	-0.3	56	100	98	0.17	20	

Connealy Capitalist 028  
**LD Capitalist 316**  
LD Dixie Erica 2053

VDAR Showdown 7236  
**Gnerer ShowGirl 7236-025**  
Gnerer DL 550 Sunset 897 G

S A V Final Answer 0035  
Prides Pita of Conanga 8821  
C A Future Direction 5321  
LD Dixie Erica Oar 0853

V D A R Sonny Boy 1194  
V D A R Forever Lady 1409  
Gnerer Date Line 550  
Gnerer Big-Heart-Sunset

BW WT
86
205 WT
706
DAM
PROD.
4@103

MILK	FL	CW	MARB	RE	\$EN	\$M	\$F	\$B
34	1.26	55	0.16	0.66	-17	75	106	133

Lot  
**48**

**GNERER 31 CAPITLST 316 5101**

DOB: 03/01/25 AAA: 21411356

CED	BW	WW	WN RATIO	YW	SC	DOC	ANGUS63
-3	3.7	87	121	148	0.54	27	

LD Capitalist 316  
**Gnerer 316 Cap 3031**  
Gnerer Blackbird 157

Mc Cumber 5005 Titan 8154  
**Gnerer Ida 16 #**  
Gnerer Extra Ida 940

Connealy Capitalist 028  
LD Dixie Erica 2053  
Deep Creek 38 Special 900  
Blackbird 19-247

Mc Cumber Titanium 5005  
Lassie 113 of Mc Cumber  
Gnerer 4C Extra 5799  
Gnerer Extra Prize 549

BW WT
91
205 WT
794
DAM
PROD.
3@113

MILK	FL	CW	MARB	RE	\$EN	\$M	\$F	\$B
26	1.22	69	0.43	0.27	-32	73	109	145

Lot  
**49**

**GNERER LUCKY 7 - 5825**

DOB: 02/02/25 AAA: 21254748

CED	BW	WW	WN RATIO	YW	SC	DOC	ANGUS63
9	-0.1	59	100	109	0.51	15	

T/D Doc Ryan 049  
**Herbster Lucky Seven 256**  
Herbster Blackbird 616

V D A R Clarence 2285  
**Gnerer Claire 762**  
Gnerer Prides Big Time 534

Casino Bomber N33  
T/D Ruby of Tiffany 824  
Herbster Sportsman 232  
Sandpoint Blackbird 8809

Ginger Hill Treasure 233  
V D A R Elluna 3105  
Gnerer Big Time 707  
Gnerer Mosie Easy Pride C120

BW WT
78
205 WT
712
DAM
PROD.
6@95

MILK	FL	CW	MARB	RE	\$EN	\$M	\$F	\$B
25	1.14	49	0.61	1.04	-9	74	96	152

Lot  
**50**

**GNERER STEP UP 5054**

DOB: 02/12/25 AAA: 21411541

CED	BW	WW	WN RATIO	YW	SC	DOC	ANGUS63
-1	3.3	62	102	107	0.44	8	

G A R Big Step K715  
**EZAR Step Up 9178**  
Basin Lucy 4261

Gnerer Blk Cedar Prize 4112  
**Gnerer Miss BC Prize 835**  
Gnerer Windy Prince 313

G A R Sure Fire  
Chair Rock Prophet 3131  
EXAR Denver 2002B  
Basin Lucy 1022

V D A R Black Cedar 8380  
Gnerer Best Time Entp 112  
V D A R Really Windy 4097  
Gnerer Best Time Entp 112

BW WT
95
205 WT
666
DAM
PROD.
5@100

MILK	FL	CW	MARB	RE	\$EN	\$M	\$F	\$B
28	1.07	35	0.56	0.34	-9	70	72	114



**“The only place success comes before work is in the dictionary.”**

- Vince Lombardi

Lot  
**51**

**GNERER LUCKY 7 - 5866**

DOB: 02/19/25 AAA: 21254749

CED	BW	WW	WN RATIO	YW	SC	DOC	ANGUS <sup>SS</sup>
4	3.1	79	104	138	2.41	27	

T/D Doc Ryan 049  
**Herbster Lucky Seven 256**  
Herbster Blackbird 616  
V D A R Clarence 2285  
**Gnerer Claire 731 #**  
Gnerer Iris 521

Casino Bomber N33  
T/D Ruby of Tiffany 824  
Herbster Sportsman 232  
Sandpoint Blackbird 8809  
Ginger Hill Treasure 233  
V D A R Elluna 3105  
Connealy Capitalist 028  
Gnerer Black Iris 319

BW WT	95
205 WT	734
DAM PROD.	7@105

MILK	FL	CW	MARB	RE	SEN	SM	SF	SB
38	1.15	66	1.08	0.72	-19	90	100	172



Lot  
**52**

**GNERER JUSTIFIED 5059**

DOB: 02/12/25 AAA: 21411607

CED	BW	WW	WN RATIO	YW	SC	DOC	ANGUS <sup>SS</sup>
10	-0.4	56	107	97	0.44	11	

KG Justified 3023  
**Coleman Justified 132**  
Coleman Donna 504  
Gnerer Rocky 8663  
**Gnerer Black Gold 3007**  
Gnerer Black Prize TN

Connealy Judgment  
KG Miss Magic 1443  
S A V Resource 1441  
Coleman Donna 714  
K C F Bennett Boulder  
Gnerer Uptown Girl 663  
Mc Cumber 5005 Titan 8154  
Gnerer Black Gold 010 S

BW WT	73
205 WT	704
DAM PROD.	1@107

MILK	FL	CW	MARB	RE	SEN	SM	SF	SB
29	1.11	42	0.69	0.36	-7	76	76	128



**LD DIXIE ERICA 2053**

PGD to Lots 23, 36, 42, 44, 47, 53, 54, 56, 58, 76, 88, 108, 114, 129

Lot  
**53**

**GNERER CAPITALIST 316 - 5834**

DOB: 02/06/25 AAA: 21254768

CED	BW	WW	WN RATIO	YW	SC	DOC	ANGUS <sup>SS</sup>
-2	3.1	63	102	112	0.2	15	

Connealy Capitalist 028  
**LD Capitalist 316**  
LD Dixie Erica 2053  
Gnerer Right Answer 114  
**Gnerer Pride 461**  
Gnerer Prides Date 540 S

S A V Final Answer 0035  
Prides Pita of Conanga 8821  
C A Future Direction 5321  
LD Dixie Erica Oar 0853  
Connealy Right Answer 746  
Gnerer Ponderosa 507 S  
Gnerer Big Date G 210  
V A R Pride H C 377

BW WT	81
205 WT	718
DAM PROD.	10@100

MILK	FL	CW	MARB	RE	SEN	SM	SF	SB
23	1.11	41	0.41	0.43	-17	61	89	130



Lot  
**54**

**GNERER 316 CAPITALIST 5011**

DOB: 01/27/25 AAA: 21411606

CED	BW	WW	WN RATIO	YW	SC	DOC	ANGUS <sup>SS</sup>
11	-1.5	66	101	110	0.41	30	

Connealy Capitalist 028  
**LD Capitalist 316**  
LD Dixie Erica 2053  
U-2 Coalition 206C  
**Gnerer Marian 318**  
Gnerer Miss Right 173

S A V Final Answer 0035  
Prides Pita of Conanga 8821  
C A Future Direction 5321  
LD Dixie Erica Oar 0853  
HF Syndicate 213Z  
U2 Erelite 109Z  
Gnerer Remedy 9399  
Gnerer Miss Clare 93

BW WT	67
205 WT	672
DAM PROD.	1@101

MILK	FL	CW	MARB	RE	SEN	SM	SF	SB
38	1.16	49	0.43	0.99	-7	105	87	133

Lot  
**56**

**GNERER 316 CAPITALIST 5024**

DOB: 01/31/25 AAA: 21411572

CED	BW	WW	WN RATIO	YW	SC	DOC	ANGUS <sup>SS</sup>
11	-0.5	60	105	93	0.84	25	

Connealy Capitalist 028  
**LD Capitalist 316**  
LD Dixie Erica 2053  
U-2 Coalition 206C  
**Gnerer Beauty 333**  
Gnerer Beauty 4260

S A V Final Answer 0035  
Prides Pita of Conanga 8821  
C A Future Direction 5321  
LD Dixie Erica Oar 0853  
HF Syndicate 213Z  
U2 Erelite 109Z  
Gnerer Bismarck 229  
Gnerer Beauty 260

BW WT	68
205 WT	703
DAM PROD.	1@105

MILK	FL	CW	MARB	RE	SEN	SM	SF	SB
26	1.11	37	0.3	0.9	-4	84	73	111

Lot  
**55**

**GNERER CEDAR WIND 568-5806**

DOB: 01/25/25 AAA: 21239720

CED	BW	WW	WN RATIO	YW	SC	DOC	ANGUS <sup>SS</sup>
10	1.1	66	104	112	1.65	13	

V D A R Cedar Wind 8111  
**VDAR Cedar Wind 5689**  
V D A R Beauty 4321  
U-2 Coalition 206C  
**Gnerer Coalition 369**  
Gnerer Clare 986

Cole Creek Cedar Ridge 1V  
V D A R Chloe 9727  
Koupal Juneau 797  
V D A R Beauty 0355  
HF Syndicate 213Z  
U2 Erelite 109Z  
V D A R Clarence 2285  
Gnerer Lucy 4926

BW WT	73
205 WT	739
DAM PROD.	1@104

MILK	FL	CW	MARB	RE	SEN	SM	SF	SB
32	1.23	30	0.45	0.5	-5	84	55	96

Lot  
**57**

**GNERER MAVERICK 5832**

DOB: 02/05/25 AAA: 21254734

CED	BW	WW	WN RATIO	YW	SC	DOC	ANGUS <sup>SS</sup>
-4	3.7	67	111	120	0.4	25	

Basin Payweight 1682  
**Poss Maverick**  
Poss Pride 5163  
V D A R Cedar Wind 8111  
**Gnerer Mona 317 #**  
Gnerer SA04 602 M

Basin Payweight 006S  
21AR O Lass 7017  
Poss Hoover Dam 2509  
Poss Pride 9526  
Cole Creek Cedar Ridge 1V  
V D A R Chloe 9727  
Gnerer Montana Rose 404  
Gnerer Lucy R805

BW WT	100
205 WT	780
DAM PROD.	11@107

MILK	FL	CW	MARB	RE	SEN	SM	SF	SB
29	1.04	47	0.94	0.78	-18	54	92	160

Lot  
**58**

**GNERER 316 CAPITALIST 5057**

DOB: 02/12/25 AAA: 21499674

CED	BW	WW	WN RATIO	YW	SC	DOC	ANGUS63
14	-0.9	64	105	106	0.68	15	BW WT
							78
							205 WT
							686
							DAM PROD.
							5@103

Connealy Capitalist 028  
**LD Capitalist 316**  
LD Dixie Erica 2053

S A V Final Answer 0035  
Prides Pita of Conanga 8821  
C A Future Direction 5321  
LD Dixie Erica Oar 0853  
Connealy Black Granite  
Gnerer Quality Lass 038 C  
Gnerer 420 New Design 561 C  
Gnerer Black Rose SA04 G

Gnerer Black Granite 4038  
**Gnerer Granite Girl 038-949**  
Gnerer Black Rose 871g

MILK	FL	CW	MARB	RE	SEN	SM	SF	SB
27	1.15	54	0.69	1.08	-11	78	108	169

Lot  
**59**

**GNERER STEP UP 5852**

DOB: 02/14/25 AAA: 21296833

CED	BW	WW	WN RATIO	YW	SC	DOC	ANGUS63
4	1.6	64	111	116	1.57	18	BW WT
							88
							205 WT
							781
							DAM PROD.
							6@108

G A R Big Step K715  
**EZAR Step Up 9178**  
Basin Lucy 4261

G A R Sure Fire  
Chair Rock Prophet 3131  
EXAR Denver 2002B  
Basin Lucy 1022

Gnerer Really Windy 3601  
**Gnerer Really Windy 8860 #**  
Gnerer Lucy 805 860M

V D A R Really Windy 4097  
Gnerer Black Rose SA04 G  
Sitz Alliance 6595  
Gnerer Lucy R805

MILK	FL	CW	MARB	RE	SEN	SM	SF	SB
37	1.24	55	0.67	0.46	-21	97	105	152

Lot  
**60**

**GNERER STEP UP 5860**

DOB: 02/16/25 AAA: 21296834

CED	BW	WW	WN RATIO	YW	SC	DOC	ANGUS63
8	0.4	54	99	101	0.81	18	BW WT
							74
							205 WT
							696
							DAM PROD.
							6@103

G A R Big Step K715  
**EZAR Step Up 9178**  
Basin Lucy 4261

G A R Sure Fire  
Chair Rock Prophet 3131  
EXAR Denver 2002B  
Basin Lucy 1022

Connealy Guinness  
**Gnerer Guinness 839**  
Gnerer Canyon G 725

Connealy Dublin 8223  
Panda of Conanga 3609  
HKAR Forefront P101  
Gnerer Canyon G343

MILK	FL	CW	MARB	RE	SEN	SM	SF	SB
31	1.12	42	1.44	0.32	1	92	95	174

Lot  
**61**

**GNERER STEP UP 5034**

DOB: 02/04/25 AAA: 21411516

CED	BW	WW	WN RATIO	YW	SC	DOC	ANGUS63
3	1	51	99	89	0.92	10	BW WT
							82
							205 WT
							663
							DAM PROD.
							5@102

G A R Big Step K715  
**EZAR Step Up 9178**  
Basin Lucy 4261

G A R Sure Fire  
Chair Rock Prophet 3131  
EXAR Denver 2002B  
Basin Lucy 1022

Gnerer Blk Cedar Prize 4112  
**Gnerer Miss BC Prize 924**  
Gnerer Lucy Windy Day 527

V D A R Black Cedar 8380  
Gnerer Best Time Entp 112  
Gnerer Windy Prize 3903  
Gnerer Lucy 276

MILK	FL	CW	MARB	RE	SEN	SM	SF	SB
26	1.08	27	0.5	0.11	-11	70	65	101

Lot  
**62**

**GNERER MAVERICK 5869**

DOB: 02/20/25 AAA: 21332853

CED	BW	WW	WN RATIO	YW	SC	DOC	ANGUS63
-10	4.4	67	106	112	0.82	21	BW WT
							99
							205 WT
							747
							DAM PROD.
							8@108

Basin Payweight 1682  
**Poss Maverick**  
Poss Pride 5163

Basin Payweight 006S  
21AR O Lass 7017  
Poss Hoover Dam 2509  
Poss Pride 9526

V D A R Cedar Wind 8111  
**Gnerer Cedar Wind 613 #**  
Gnerer Merla 046 M

Cole Creek Cedar Ridge 1V  
V D A R Chloe 9727  
Gnerer Dateline Sunset 833G  
Gnerer 210 Merla 538

MILK	FL	CW	MARB	RE	SEN	SM	SF	SB
29	1.03	37	0.77	0.79	-12	42	81	145

Lot  
**63**

**GNERER LUCKY SEVEN 5089**

DOB: 02/26/25 AAA: 21411605

CED	BW	WW	WN RATIO	YW	SC	DOC	ANGUS63
-4	5.2	67	102	113	0.94	15	BW WT
							87
							205 WT
							670
							DAM PROD.
							10@97

T/D Doc Ryan 049  
**Herbster Lucky Seven 256**  
Herbster Blackbird 616

Casino Bomber N33  
T/D Ruby of Tiffany 824  
Herbster Sportsman 232  
Sandpoint Blackbird 8809

VDAR Enterprise 2059  
**Gnerer Best Time Entp 112**  
Gnerer Best Time 674 S

V D A R Lucys Boy  
V D A R Lass 5186  
Gnerer Big Time 707  
Gnerer Miss High Roller S607

MILK	FL	CW	MARB	RE	SEN	SM	SF	SB
15	1.07	53	0.65	0.65	-10	49	104	156

Lot  
**64**

**GNERER C-JUSTIFIED 132 -5812**

DOB: 01/26/25 AAA: 21239707

CED	BW	WW	WN RATIO	YW	SC	DOC	ANGUS63
15	-1.1	68	110	116	0.89	29	BW WT
							63
							205 WT
							783
							DAM PROD.
							1@110

KG Justified 3023  
**Coleman Justified 132**  
Coleman Donna 504

Connealy Judgment  
KG Miss Magic 1443  
S A V Resource 1441  
Coleman Donna 714

VDAR Cedar Wind 5689  
**Gnerer Cedar Girl 568-363**  
Gnerer Pebbles 88

V D A R Cedar Wind 8111  
V D A R Beauty 4321  
K C F Bennett Boulder  
Gnerer Right Girl 694

MILK	FL	CW	MARB	RE	SEN	SM	SF	SB
23	1.13	36	0.67	0.07	-20	74	65	107



**COLEMAN DONNA 504**

PGD to Lots 28, 52, 64, 67, 79, 87, 105, 117, 126, 133



**BASIN LUCY 4621**

PGD to Lots  
1, 5, 11, 12, 21, 22, 24, 31, 35, 37,  
39, 43, 50, 59, 60, 61, 68, 85, 91,  
93, 119



**RLG**

**62**

Lot  
**65**

**GNERER 33 CAPITLIST 5019**

DOB: 01/29/25 AAA: 21411338

CED	BW	WW	WN RATIO	YW	SC	DOC	ANGUS <sup>SS</sup>
9	2	69	100	108	1.15	17	

LD Capitalist 316  
**Gnerer 316 Cap 3033**  
Gnerer Patty 167

Connealy Capitalist 028  
LD Dixie Erica 2053  
Deep Creek 38 Special 900  
Patty 19-747

VDAR Cedar Wind 5689  
**Gnerer Black Rose 345**  
Gnerer Black Rose 124

V D A R Cedar Wind 8111  
V D A R Beauty 4321  
Gnerer Rocky 8663  
Gnerer Miss BC Prize 824

MILK	FL	CW	MARB	RE	\$EN	\$M	\$F	\$B
19	1.28	35	0.3	0.59	-14	91	64	99

BW WT	74
205 WT	205
671	
DAM PROD.	
1@100	



RLG

65

Lot  
**66**

**GNERER DOC RYAN 5848**

DOB: 02/11/25 AAA: 21254757

CED	BW	WW	WN RATIO	YW	SC	DOC	ANGUS <sup>SS</sup>
11	-1.3	69	108	114	2.14	17	

Casino Bomber N33  
**T/D Doc Ryan 049**  
T/D Ruby of Tiffany 824

KM Broken Bow 002  
Casino Annie K48  
G A R Phenom 7953  
B/R Ruby of Tiffany 688

V D A R Winston 2165  
**Gnerer Winny Girl 814**  
Gnerer Lucy 259

V D A R Churchill 1063  
V D A R Lass 3114  
Gnerer Danny Boy 990 G  
Gnerer Lucys Survivor

MILK	FL	CW	MARB	RE	\$EN	\$M	\$F	\$B
30	1.16	53	0.96	0.43	-20	69	94	155

BW WT	76
205 WT	205
758	
DAM PROD.	
6@98	

Visit us online

[www.GnererAngus.com](http://www.GnererAngus.com)

Find us on

Lot  
**67**

**GNERER 132 JUSTIFIED 5050**

DOB: 02/09/25 AAA: 21462460

CED	BW	WW	WN RATIO	YW	SC	DOC	ANGUS <sup>SS</sup>
7	1.7	88	107	144	0.39	28	

KG Justified 3023  
**Coleman Justified 132**  
Coleman Donna 504

Connealy Judgment  
KG Miss Magic 1443  
S A V Resource 1441  
Coleman Donna 714

LD Capitalist 316  
**Gnerer Ponderosa 351**  
Gnerer Windy Rosa 44 4278

Connealy Capitalist 028  
LD Dixie Erica 2053  
Gnerer Really Windy 2044  
Gnerer Miss Ponderosa 278

MILK	FL	CW	MARB	RE	\$EN	\$M	\$F	\$B
30	1.07	76	0.53	0.73	-29	78	122	167

BW WT	66
205 WT	205
717	
DAM PROD.	
1@107	

Lot  
**68**

**GNERER STEP UP 5856**

DOB: 02/15/25 AAA: 21296846

CED	BW	WW	WN RATIO	YW	SC	DOC	ANGUS <sup>SS</sup>
0	1.7	68	108	117	1.12	16	

G A R Big Step K715  
**EZAR Step Up 9178**  
Basin Lucy 4261

G A R Sure Fire  
Chair Rock Prophet 3131  
EXAR Denver 2002B  
Basin Lucy 1022

VDAR Enterprise 2059  
**Gnerer EnterPrize 792**  
Gnerer Montana Rose 847M

V D A R Lucys Boy  
V D A R Lass 5186  
Gnerer 420 New Design 561 C  
Gnerer SA04 603 M

MILK	FL	CW	MARB	RE	\$EN	\$M	\$F	\$B
21	1.08	51	1.03	0.69	-15	68	96	164

BW WT	79
205 WT	205
759	
DAM PROD.	
7@101	

Lot  
**69**

**GNERER DOC RYAN 5053**

DOB: 02/12/25 AAA: 21411577

CED	BW	WW	WN RATIO	YW	SC	DOC	ANGUS <sup>SS</sup>
14	-2.9	51	104	98	0.31	20	

Casino Bomber N33  
**T/D Doc Ryan 049**  
T/D Ruby of Tiffany 824

KM Broken Bow 002  
Casino Annie K48  
G A R Phenom 7953  
B/R Ruby of Tiffany 688

V D A R Cedar Wind 8111  
**Gnerer Sunset Wind 499**  
Ida Extra 799 A A R

Cole Creek Cedar Ridge 1V  
V D A R Chloe 9727  
A A R Extra 814  
Cash Flow Ida 285 A A R

MILK	FL	CW	MARB	RE	\$EN	\$M	\$F	\$B
35	1.18	38	0.58	0.49	-2	80	82	128

BW WT	70
205 WT	205
683	
DAM PROD.	
10@99	

Lot  
**70**

**GNERER CEDAR WIND 462-5868**

DOB: 02/20/25 AAA: 21312426

CED	BW	WW	WN RATIO	YW	SC	DOC	ANGUS360
11	0.3	60	112	107	0.34	11	BW WT
							74
							205 WT
							785
							DAM
							PROD.
							2@100

V D A R Cedar Wind 8111  
**VDAR Cedar Wind 4628**  
V D A R Elluna 5858

Cole Creek Cedar Ridge 1V  
V D A R Chloe 9727  
V D A R Black Train 1243  
VDAR Elluna 3765  
Connealy Guinness  
Gnerer Sunset 31  
V D A R Winston 2165  
Gnerer Katie 579

Gnerer Guinness 831  
**Gnerer Guinness Gal 831 -250**  
Gnerer Winny 757

MILK	FL	CW	MARB	RE	\$EN	\$M	\$F	\$B
22	1.19	44	0.2	0.45	-6	76	90	117

Lot  
**71**

**GNERER LUCKY SEVEN 5063**

DOB: 02/13/25 AAA: 21411598

CED	BW	WW	WN RATIO	YW	SC	DOC	ANGUS360
3	2.8	71	102	123	1.68	13	BW WT
							90
							205 WT
							668
							DAM
							PROD.
							7@102

T/D Doc Ryan 049  
**Herbster Lucky Seven 256**  
Herbster Blackbird 616

Casino Bomber N33  
T/D Ruby of Tiffany 824  
Herbster Sportsman 232  
Sandpoint Blackbird 8809

V D A R Winston 2165  
**Gnerer Marian 75**  
Gnerer Tressa 011 M

V D A R Churchill 1063  
V D A R Lass 3114  
VDAR Enterprise 2059  
Gnerer Tressa 829M

MILK	FL	CW	MARB	RE	\$EN	\$M	\$F	\$B
20	1.07	49	1.05	0.49	-34	29	88	160

Lot  
**72**

**GNERER POWERBALL 5885**

DOB: 02/28/25 AAA: 21335928

CED	BW	WW	WN RATIO	YW	SC	DOC	ANGUS360
10	1.7	61	109	106	1.28	14	BW WT
							85
							205 WT
							766
							DAM
							PROD.
							7@103

Sv Powerball 0119  
**VDAR Powerball 4023**  
VDAR Miss Traveler 1103

Roseda Powerball23 F091  
Veemans 0035 Llobelia 2002  
V D A R Cedar Wind 5126  
VDAR Miss Traveler 9253

Gnerer Up Side 3923  
**Gnerer Uptown Girl 688**  
Gnerer Canyon 234

Sitz Upside 547W  
Gnerer Dellas Ndy 923 M  
Gnerer Danny Boy 990 G  
Gnerer New Design 700 062 G

MILK	FL	CW	MARB	RE	\$EN	\$M	\$F	\$B
30	1.13	39	0.42	0.22	-21	66	75	110

Lot  
**73**

**GNERER 972 CLARENCE 5099**

DOB: 02/28/25 AAA: 21411549

CED	BW	WW	WN RATIO	YW	SC	DOC	ANGUS360
-2	2.7	71	100	122	1.49	4	BW WT
							86
							205 WT
							658
							DAM
							PROD.
							3@103

V D A R Clarence 2285  
**Gnerer Clarence 972**  
Gnerer Marian Corners 72

Ginger Hill Treasure 233  
V D A R Elluna 3105  
V D A R Winston 2165  
Gnerer Tressa's Corner 528

Sitz Resilient 10208  
**Gnerer Molly Kay 193**  
Molly Kay 17-135

Sitz Stellar 726D  
Sitz Miss Burgess 1856  
Centennial Really Windy 052  
Molly Kay 11-715

MILK	FL	CW	MARB	RE	\$EN	\$M	\$F	\$B
23	1.2	46	0.59	0.18	-14	77	78	119

Lot  
**74**

**GNERER LUCKY 7 - 5881**

DOB: 02/25/25 AAA: 21254737

CED	BW	WW	WN RATIO	YW	SC	DOC	ANGUS360
8	1.5	82	96	138	1.76	23	BW WT
							73
							205 WT
							678
							DAM
							PROD.
							2@99

T/D Doc Ryan 049  
**Herbster Lucky Seven 256**  
Herbster Blackbird 616

Casino Bomber N33  
T/D Ruby of Tiffany 824  
Herbster Sportsman 232  
Sandpoint Blackbird 8809

TEX Playbook 5437  
**Gnerer PlayBack 209**  
Gnerer Pride 578

Basin Payweight 1682  
Rita 1C43 of 9M26 Complete  
Hoover Dam  
Gnerer Pride 27

MILK	FL	CW	MARB	RE	\$EN	\$M	\$F	\$B
31	1.07	63	0.86	0.69	-28	61	97	158

Lot  
**75**

**GNERER TREMENDOUS 5127**

DOB: 03/13/25 AAA: 21411501

CED	BW	WW	WN RATIO	YW	SC	DOC	ANGUS360
-10	5.9	71	104	121	1.11	18	BW WT
							108
							205 WT
							682
							DAM
							PROD.
							3@111

Mc Cumber 2008 Trmndous 722  
**Mc Cumber 722 Trmndous 9213**  
Miss Wix 728 of Mc Cumber

Mc Cumber Tremendous 2008  
Miss Wix 175 of Mc Cumber  
O C C Unmistakable 946U  
Miss Wix 2195 of Mc Cumber

Gnerer Rocky 8663  
**Gnerer Miss RK Pro Prize 076**  
Gnerer Miss Pro Prize 811

K C F Bennett Boulder  
Gnerer Uptown Girl 663  
Gnerer Pro Prize 3825  
Gnerer Windy Rosa 44 4278

MILK	FL	CW	MARB	RE	\$EN	\$M	\$F	\$B
24	1.17	45	0.3	0.42	-14	59	76	106



Lot  
**76**

**GNERER CAPITALIST 316 - 5847**

DOB: 02/10/25 AAA: 21254759

CED	BW	WW	WN RATIO	YW	SC	DOC	ANGUS360
15	-0.6	58	92	99	1.19	23	BW WT
							72
							205 WT
							646
							DAM
							PROD.
							4@98

Connealy Capitalist 028  
**LD Capitalist 316**  
LD Dixie Erica 2053

S A V Final Answer 0035  
Prides Pita of Conanga 8821  
C A Future Direction 5321  
LD Dixie Erica Oar 0853

VDAR Showdown 7236  
**Gnerer ShowGirl 014**  
Gnerer Date Line 902

V D A R Sonny Boy 1194  
V D A R Forever Lady 1409  
Gnerer Date Line 550  
V A R Pride H C 377

MILK	FL	CW	MARB	RE	\$EN	\$M	\$F	\$B
16	1.19	44	0.67	0.67	-8	67	85	139

Lot  
**77**

**GNERER HUMBOLDT 5116**

DOB: 03/08/25 AAA: 21411339

CED	BW	WW	WN RATIO	YW	SC	DOC	ANGUS360
4	1.7	65	109	110	0.57	17	BW WT
							93
							205 WT
							717
							DAM
							PROD.
							2@113

Poss Maverick  
**Herbster Humboldt 373**  
R B Lady Standard 305-890

Basin Payweight 1682  
Poss Pride 5163  
LCC New Standard  
B A Lady 6807 305

U-2 Coalition 206C  
**Gnerer Best Time 201**  
Gnerer Black Prize TN

HF Syndicate 213Z  
U2 Erelite 109Z  
Mc Cumber 5005 Titan 8154  
Gnerer Black Gold 010 S

MILK	FL	CW	MARB	RE	\$EN	\$M	\$F	\$B
23	1.13	49	0.85	0.83	-15	63	106	171

**GNERER ANGUS**



Producing *quality* bulls by  
focusing on a *superior* cow!

Lot  
**78**

**GENER JUSTIFIED 914-5844**

DOB: 02/10/25 AAA: 21255137

CED	BW	WW	WN RATIO	YW	SC	DOC	ANGUS <sup>SS</sup>
10	1.9	71	90	127	1.02	28	

KG Justified 3023  
**GDAR Justified 914**  
GDAR Forever Lady 7533  
Gnerer Capitalist 5364  
**Gnerer Capitalist 364 - 885**  
Gnerer New Design 452

Connealy Judgment  
KG Miss Magic 1443  
Sitz Reinvested 636a  
GDAR Forever Lady 1138  
Connealy Capitalist 028  
Gnerer Lucy 364  
W H S Limelight 64V  
Gnerer New Design 870G

BW WT
82
205 WT
631
DAM
PROD.
6@97

MILK	FL	CW	MARB	RE	SEN	SM	SF	SB
25	1.23	58	0.83	0.47	-14	109	107	167



RLG

**78**

Lot  
**79**

**GENER JUSTIFIED 5006**

DOB: 01/25/25 AAA: 21411377

CED	BW	WW	WN RATIO	YW	SC	DOC	ANGUS <sup>SS</sup>
16	-1.5	56	103	98	0.72	23	

KG Justified 3023  
**Coleman Justified 132**  
Coleman Donna 504  
V D A R Winston 2165  
**Gnerer Marian 363**  
Gnerer Really Wende 9130

Connealy Judgment  
KG Miss Magic 1443  
S A V Resource 1441  
Coleman Donna 714  
V D A R Churchill 1063  
V D A R Lass 3114  
Gnerer Really Windy 3601  
Gnerer Ponderosa 349

BW WT
68
205 WT
687
DAM
PROD.
1@103

MILK	FL	CW	MARB	RE	SEN	SM	SF	SB
27	1.15	41	0.54	0.65	1	97	84	131

**Flush  
brother to  
Lot 27!**

Lot  
**83**

**SEE SUPPLEMENT SHEET**

DOB: 01/31/25 AAA: 628254864

CED	BW	WW	WN RATIO	YW	SC	DOC	ANGUS <sup>SS</sup>
			ET				

Basin Payweight 1682  
**Poss Maverick**  
Poss Pride 5163  
U-2 Coalition 206C  
**Gnerer Ida 30**  
Ida Extra 799 A A R

Basin Payweight 006S  
21AR O Lass 7017  
Poss Hoover Dam 2509  
Poss Pride 9526  
HF Syndicate 213Z  
U2 Erelite 109Z  
A A R Extra 814  
Cash Flow Ida 285 A A R

BW WT
99
205 WT
ET
DAM
PROD.
1@103

MILK	FL	CW	MARB	RE	SEN	SM	SF	SB

Lot  
**80**

**GENER CEDAR WIND 5872**

DOB: 02/22/25 AAA: 21451373

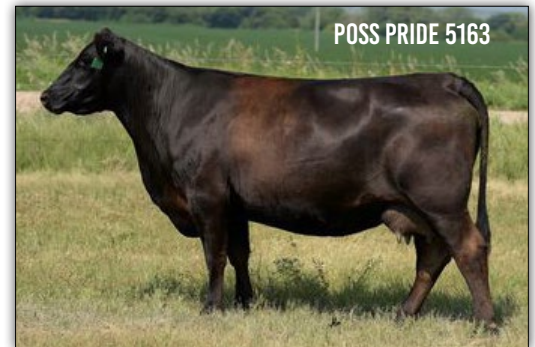
CED	BW	WW	WN RATIO	YW	SC	DOC	ANGUS <sup>SS</sup>
-1	4.2	70	92	110	0.47	21	

VDAR Cedar Wind 5689  
**Gnerer Cedar Wind 568-3848**  
Gnerer Lucy 462  
V A R Generation 2100  
**Gnerer Generation 737 #**  
Gnerer Canyon 280

V D A R Cedar Wind 8111  
V D A R Beauty 4321  
Gnerer Right Answer 114  
Gnerer Lucy 057 M  
Connealy Consensus 7229  
Sandpoint Blackbird 8809  
Gnerer Enterprise 012 M  
Gnerer 6595 991 G

BW WT
84
205 WT
649
DAM
PROD.
7@106

MILK	FL	CW	MARB	RE	SEN	SM	SF	SB
29	1.02	30	0.08	0.43	-5	68	53	79



POSS PRIDE 5163

PGD to Lots 27, 32, 57, 83, 90, 111

Lot  
**81**

**GENER DOC RYAN 5069**

DOB: 02/15/25 AAA: 21411571

CED	BW	WW	WN RATIO	YW	SC	DOC	ANGUS <sup>SS</sup>
11	-0.7	59	93	113	1.22	24	

Casino Bomber N33  
**T/D Doc Ryan 049**  
T/D Ruby of Tiffany 824  
Gnerer Pro Prize 3825  
**Gnerer Prize Lucy 609**  
Gnerer Lucy 248

KM Broken Bow 002  
Casino Annie K48  
G A R Phenom 7953  
B/R Ruby of Tiffany 688  
VDAR Enterprise 2059  
Gnerer Tressa Frft 825M  
Gnerer Danny Boy 990 G  
Gnerer Dannys Lucy J R 632 M

BW WT
64
205 WT
607
DAM
PROD.
8@98

MILK	FL	CW	MARB	RE	SEN	SM	SF	SB
26	1.05	48	0.52	0.84	-19	49	90	137

**View videos & bid online!**

**DVAuction**  
Broadcasting Real-Time Auctions

**LivestockMarket.com**

Lot  
**82**

**GENER BLASTOFF 5875**

DOB: 02/23/25 AAA: 21312407

CED	BW	WW	WN RATIO	YW	SC	DOC	ANGUS <sup>SS</sup>
7	1.8	60	108	106	1.17	25	

VDAR 4321 Blastoff 7230  
**VDAR Blastoff 2762**  
VDAR Polly 9220  
V D A R Cedar Wind 8111  
**Gnerer Cedar Girl 765**  
Gnerer Sunset 042 G

V D A R Stout 6287  
V D A R Beauty 4321  
V D A R Cedar Wind 5126  
V D A R Polly 7927  
Cole Creek Cedar Ridge 1V  
V D A R Chloe 9727  
Vermilion X Factor  
Gnerer Big Pride G 152

BW WT
92
205 WT
761
DAM
PROD.
7@102

MILK	FL	CW	MARB	RE	SEN	SM	SF	SB
13	1.08	30	-0.01	0.26	7	80	69	85



RLG

**82**

Lot  
**84**

**GNERER CEDAR WIND 568-5889**

DOB: 03/05/25 AAA: 21325126

CED	BW	WW	WN RATIO	YW	SC	DOC	ANGUS <sup>SS</sup>
11	2.4	64	92	107	0.59	22	

V D A R Cedar Wind 8111 Cole Creek Cedar Ridge 1V  
**VDAR Cedar Wind 5689** V D A R Chloe 9727  
 V D A R Beauty 4321 Koupal Juneau 797  
 V A R Index 3282 G A R Ingenuity  
**Gnerer Index 004** Sandpoint Blackbird 8809  
 Gnerer Cedar Girl 816 V D A R Cedar Wind 8111  
 Gnerer High Roller 01 M

MILK	FL	CW	MARB	RE	\$EN	\$M	\$F	\$B
22	1.22	27	0.16	0.51	-9	84	63	90

BW WT	87
205 WT	205
645	
DAM	
PROD.	
3@99	

Lot  
**85**

**GNERER STEP UP 5073**

DOB: 02/16/25 AAA: 21411507

CED	BW	WW	WN RATIO	YW	SC	DOC	ANGUS <sup>SS</sup>
10	0.4	65	97	121	1.66	19	

G A R Big Step K715 G A R Sure Fire  
**EZAR Step Up 9178** Chair Rock Prophet 3131  
 Basin Lucy 4261 EXAR Denver 2002B  
 Basin Lucy 1022  
 Mc Cumber 5005 Titan 8154 Mc Cumber Titanium 5005  
**Gnerer TN Miss Clare 140 #** Lassie 113 of Mc Cumber  
 Gnerer Miss Clare 810 V D A R Clarence 2285  
 Gnerer Della 100

MILK	FL	CW	MARB	RE	\$EN	\$M	\$F	\$B
29	1.13	60	0.78	0.8	-14	88	111	170

BW WT	78
205 WT	205
634	
DAM	
PROD.	
3@105	

Lot  
**86**

**GNERER CEDAR WIND 568-5837**

DOB: 02/04/25 AAA: 21314577

CED	BW	WW	WN RATIO	YW	SC	DOC	ANGUS <sup>SS</sup>
7	1.3	61	100	107	0.64	13	

V D A R Cedar Wind 8111 Cole Creek Cedar Ridge 1V  
**VDAR Cedar Wind 5689** V D A R Chloe 9727  
 V D A R Beauty 4321 Koupal Juneau 797  
 Gnerer Winston 7571 V D A R Beauty 0355  
**Gnerer Montana Mama 3907** V D A R Winston 2165  
 Gnerer 550 Ponderosa 835S Gnerer Prediction 571  
 Gnerer Date Line 550  
 Gnerers Miss Ponderosa 5346

MILK	FL	CW	MARB	RE	\$EN	\$M	\$F	\$B
28	1.27	37	0.1	-0.01	-13	64	64	82

BW WT	78
205 WT	205
731	
DAM	
PROD.	
1@100	

Lot  
**87**

**GNERER JUSTIFIED 5016**

DOB: 01/29/25 AAA: 21411468

CED	BW	WW	WN RATIO	YW	SC	DOC	ANGUS <sup>SS</sup>
11	1.4	78	105	122	1.81	31	

KG Justified 3023 Connealy Judgment  
**Coleman Justified 132** KG Miss Magic 1443  
 Coleman Donna 504 S A V Resource 1441  
 Coleman Donna 714  
 Gnerer Rocky 8663 K C F Bennett Boulder  
**Gnerer Marian 3008** Gnerer Uptown Girl 663  
 Gnerer Marian 9 V D A R Winston 2165  
 Gnerer Miss Clare 716

MILK	FL	CW	MARB	RE	\$EN	\$M	\$F	\$B
17	1.06	38	0.5	0.23	-1	94	61	98

BW WT	64
205 WT	205
704	
DAM	
PROD.	
1@105	

Lot  
**88**

**GNERER CAPITALIST 316 - 5861**

DOB: 02/17/25 AAA: 21254773

CED	BW	WW	WN RATIO	YW	SC	DOC	ANGUS <sup>SS</sup>
14	-0.5	52	99	90	0.61	20	

Connealy Capitalist 028 S A V Final Answer 0035  
**LD Capitalist 316** Prides Pita of Conanga 8821  
 LD Dixie Erica 2053 C A Future Direction 5321  
 LD Dixie Erica Oar 0853  
 Gnerer Enterprize 012 M VDAR Enterprise 2059  
**Gnerer Canyon 280** Gnerer Tressa Frft 825M  
 Gnerer 6595 991 G Sitz Alliance 6595  
 Gnerer Deltas Nebraska 509 G

MILK	FL	CW	MARB	RE	\$EN	\$M	\$F	\$B
26	1.11	42	0.59	0.43	17	81	93	137

BW WT	80
205 WT	205
695	
DAM	
PROD.	
11@98	



Lot  
**89**

**GNERER 316 CAPITLST C33 5020**

DOB: 01/29/25 AAA: 21462457

CED	BW	WW	WN RATIO	YW	SC	DOC	ANGUS <sup>SS</sup>
15	-2.7	59	103	96	0.16	10	

LD Capitalist 316 Connealy Capitalist 028  
**Gnerer 316 Cap 3033** LD Dixie Erica 2053  
 Gnerer Patty 167 Deep Creek 38 Special 900  
 Patty 19-747  
 VDAR Cedar Wind 5689 V D A R Cedar Wind 8111  
**Gnerer Della 311** V D A R Beauty 4321  
 Gnerer Della 131 Mc Cumber Tribute 702  
 Gnerer Best Time 900S

MILK	FL	CW	MARB	RE	\$EN	\$M	\$F	\$B
30	1.15	44	0.37	0.6	-4	68	84	120

BW WT	60
205 WT	205
689	
DAM	
PROD.	
1@103	

Lot  
**90**

**GNERER MAVERICK 5862**

DOB: 02/17/25 AAA: 21254730

CED	BW	WW	WN RATIO	YW	SC	DOC	ANGUS <sup>SS</sup>
0	2.7	64	107	104	0.38	23	

Basin Payweight 1682 Basin Payweight 006S  
**Poss Maverick** 21AR O Lass 7017  
 Poss Hoover Dam 2509  
 Poss Pride 5163 Poss Pride 9526  
 Gnerer Danny Boy 990 G Connealy Danny Boy  
**Gnerer Danny Girl 61** Gnerer Black Rose SA04 G  
 Gnerer Early Girl 430 V D A R Cedar Wind 8111  
 Gnerer Early Girl 023 M

MILK	FL	CW	MARB	RE	\$EN	\$M	\$F	\$B
31	1.11	50	1.04	0.43	-34	35	99	169

BW WT	96
205 WT	205
754	
DAM	
PROD.	
8@104	

Lot  
**91**

**GNERER STEP UP 5039**

DOB: 02/05/25 AAA: 21411535

CED	BW	WW	WN RATIO	YW	SC	DOC	ANGUS <sup>SS</sup>
6	1.2	57	89	97	1.4	13	

G A R Big Step K715 G A R Sure Fire  
**EZAR Step Up 9178** Chair Rock Prophet 3131  
 Basin Lucy 4261 EXAR Denver 2002B  
 Basin Lucy 1022  
 Gnerer Blk Cedar Prize 4112 V D A R Black Cedar 8380  
**Gnerer Miss BC Prize 845** Gnerer Best Time Entp 112  
 Gnerer Della Pro 588 AAR Program 3001  
 Gnerer Della 288

MILK	FL	CW	MARB	RE	\$EN	\$M	\$F	\$B
28	1.1	41	0.81	0.61	3	100	76	133

BW WT	78
205 WT	205
592	
DAM	
PROD.	
6@99	

Lot  
**92**

**GNERER POWERBALL 5870**

DOB: 02/22/25 AAA: 21451374

CED	BW	WW	WN RATIO	YW	SC	DOC	ANGUS <sup>SS</sup>
11	-0.6	61	107	102	1.69	16	

Sv Powerball 0119 Roseda Powerball23 F091  
**VDAR Powerball 4023** Veemans 0035 Llobelia 2002  
 VDAR Miss Traveler 1103 V D A R Cedar Wind 5126  
 VDAR Miss Traveler 9253  
 Gnerer Bismarck 229 S A V Bismarck 5682  
**Gnerer Bismarck 55** Gnerer Merels R T R304  
 Gnerer Right Answer 119  
 Gnerer Right Answer 398 Gnerer Sunset G 903

MILK	FL	CW	MARB	RE	\$EN	\$M	\$F	\$B
26	1.21	39	0.49	0.13	-9	70	82	118

BW WT	72
205 WT	205
755	
DAM	
PROD.	
9@99	

Lot  
**93**

**GNERER STEP UP 5048**

DOB: 02/09/25 AAA: 21411772

CED	BW	WW	WN RATIO	YW	SC	DOC	ANGUS
4	0.7	60	93	103	1.32	23	65S

G A R Big Step K715  
**EZAR Step Up 9178**  
Basin Lucy 4261

G A R Sure Fire  
Chair Rock Prophet 3131  
EXAR Denver 2002B  
Basin Lucy 1022  
V D A R Really Windy 4097  
Gnerer Lucy 903 M  
Gnerer Danny Boy 990 G  
Gnerer Dannys Lucy J R 632 M

BW WT	DAM PROD.
73	
205 WT	
621	
DAM PROD.	
9@98	

MILK	FL	CW	MARB	RE	SEN	SM	SF	SB
25	1.06	43	0.48	0.58	-5	70	83	125

Lot  
**94**

**GNERER SHOWDOWN 505-5888**

DOB: 03/03/25 AAA: 21312412

CED	BW	WW	WN RATIO	YW	SC	DOC	ANGUS
7	1.3	66	92	112	1.23	17	65S

VDAR Showdown 7236  
**VDAR Showdown 5059**  
V D A R Lucy 7950

V D A R Sonny Boy 1194  
V D A R Forever Lady 1409  
V D A R Cedar Wind 8111  
V D A R Lucy 5354  
Gnerer Really Windy 601 6924  
Gnerer Really Windy 3601  
Gnerer Haleys Heart 924 M  
Connealy Capitalist 028  
Gnerer Big Sky 05 M

BW WT	DAM PROD.
72	
205 WT	
650	
DAM PROD.	
3@96	

MILK	FL	CW	MARB	RE	SEN	SM	SF	SB
29	1.18	48	0.4	0.5	-8	85	82	120

Lot  
**95**

**GNERER DUKE 5058**

DOB: 02/12/25 AAA: 21411808

CED	BW	WW	WN RATIO	YW	SC	DOC	ANGUS
16	-3.8	60	102	102	0.73	29	65S

B Bar Windy 7 3575  
**Millars Duke 816**  
Millars Queen Lass 5273

B Bar Windy 79  
B Bar Eulima 357  
Tombstone 050  
Millars Queen Lass 3276  
V D A R Winston 2165  
V D A R Churchhill 1063  
V D A R Lass 3114  
V D A R Clarence 2285  
Gnerer Della 100

BW WT	DAM PROD.
69	
205 WT	
666	
DAM PROD.	
4@98	

MILK	FL	CW	MARB	RE	SEN	SM	SF	SB
34	1.2	42	0.33	0.5	-17	81	83	114

Lot  
**96**

**GNERER POWERBALL 5890**

DOB: 03/01/25 AAA: 21370479

CED	BW	WW	WN RATIO	YW	SC	DOC	ANGUS
10	-0.7	66	116	110	0.67	18	65S

Sv Powerball 0119  
**VDAR Powerball 4023**  
VDAR Miss Traveler 1103

Roseda Powerball23 F091  
Veemans 0035 Llobelia 2002  
V D A R Cedar Wind 5126  
VDAR Miss Traveler 9253  
Hilltop True Grit 9202  
Gnerer Lassie Tressa 036 M  
TC Franklin 619  
Gnerer Lucys 616 637 M

BW WT	DAM PROD.
75	
205 WT	
812	
DAM PROD.	
2@107	

MILK	FL	CW	MARB	RE	SEN	SM	SF	SB
24	1.12	46	0.56	0.45	-9	82	87	130

Lot  
**97**

**GNERER HUMBOLDT 5105**

DOB: 03/03/25 AAA: 21411254

CED	BW	WW	WN RATIO	YW	SC	DOC	ANGUS
-1	4.9	94	110	147	1.06	21	65S

Poss Maverick  
**Herbster Humboldt 373**  
R B Lady Standard 305-890

Basin Payweight 1682  
Poss Pride 5163  
LCC New Standard  
B A Lady 6807 305  
Baldrige 38 Special  
Deep Creek Rev Princess 742  
VDAR Cedar Wind 7000  
Highland Patty 17-284

BW WT	DAM PROD.
91	
205 WT	
719	
DAM PROD.	
3@114	

MILK	FL	CW	MARB	RE	SEN	SM	SF	SB
23	1.04	78	0.93	0.83	-36	49	125	191

Lot  
**98**

**GNERER TAHOE 123 - 5802**

DOB: 01/21/25 AAA: 21239699

CED	BW	WW	WN RATIO	YW	SC	DOC	ANGUS
11	-1.7	60	97	104	1.18	20	65S

Tehama Tahoe B767  
**Gnerer Tahoe 0123**  
Gnerer Rose 531

Tehama Upward Y238  
Tehama Mary Blackbird Y684  
Basin Payweight 1682  
Gnerer Black Rose 871g  
V D A R Winston 2165  
Gnerer Prediction 571  
KM Broken Bow 002  
Gnerer Miss Ponderosa 025 S

BW WT	DAM PROD.
72	
205 WT	
691	
DAM PROD.	
4@99	

MILK	FL	CW	MARB	RE	SEN	SM	SF	SB
27	1.28	37	0.85	0.48	-14	89	77	136



Lot  
**99**

**GNERER DOC RYAN 5075**

DOB: 02/20/25 AAA: 21411546

CED	BW	WW	WN RATIO	YW	SC	DOC	ANGUS
2	2.8	82	97	140	1.34	21	65S

Casino Bomber N33  
**T/D Doc Ryan 049**  
T/D Ruby of Tiffany 824

KM Broken Bow 002  
Casino Annie K48  
G A R Phenom 7953  
B/R Ruby of Tiffany 688  
K C F Bennett Boulder  
K C F Bennett TheRock A473  
K C F Miss 534 U431  
V D A R Rito 953  
Gnerer Quality Ink R608

BW WT	DAM PROD.
90	
205 WT	
638	
DAM PROD.	
4@100	

MILK	FL	CW	MARB	RE	SEN	SM	SF	SB
23	1.07	72	0.74	1.06	-22	74	115	177



PGD to Lots  
16, 29, 41, 95



Lot  
**100**

**GENER LUCKY 7 - 5830**

DOB: 02/04/25 AAA: 21254739

CED	BW	WW	WN RATIO	YW	SC	DOC	ANGUS
13	0.8	64	98	120	1.09	17	84
							<b>BW WT</b>
							205 WT
							692
							<b>DAM PROD.</b>
							7@103

T/D Doc Ryan 049  
**Herbster Lucky Seven 256**  
Herbster Blackbird 616  
  
V A R Generation 2100  
**Gnerer Generation Girl 766**  
Gnerer Lucy 28

Casino Bomber N33  
T/D Ruby of Tiffany 824  
Herbster Sportsman 232  
Sandpoint Blackbird 8809  
  
Connealy Consensus 7229  
Sandpoint Blackbird 8809  
V D A R Really Windy 4097  
Gnerer Lucy 858 063 G

MILK	FL	CW	MARB	RE	SEN	SM	SF	SB
28	1.14	47	0.97	1.06	-24	54	87	162

Lot  
**101**

**GENER 914 JUSTIFIED 5009**

DOB: 01/26/25 AAA: 21462456

CED	BW	WW	WN RATIO	YW	SC	DOC	ANGUS
4	2.3	66	98	118	1.45	20	73
							<b>BW WT</b>
							205 WT
							656
							<b>DAM PROD.</b>
							3@100

KG Justified 3023  
**GDAR Justified 914**  
GDAR Forever Lady 7533  
  
V D A R Winston 2165  
**Gnerer Marian Corner 043**  
Gnerer Sunset Corner 597

Connealy Judgment  
KG Miss Magic 1443  
Sitz Reinvested 636a  
GDAR Forever Lady 1138  
  
V D A R Churchill 1063  
V D A R Lass 3114  
V D A R Four Corners 8232  
Gnerer Sunset 297

MILK	FL	CW	MARB	RE	SEN	SM	SF	SB
23	1.08	44	0.53	0.25	-18	77	90	132

Lot  
**102**

**GENER CEDAR WIND 568-5896**

DOB: 03/05/25 AAA: 21312434

CED	BW	WW	WN RATIO	YW	SC	DOC	ANGUS
10	1.5	65	102	113	0.77	24	85
							<b>BW WT</b>
							205 WT
							717
							<b>DAM PROD.</b>
							11@100

V D A R Cedar Wind 8111  
**VDAR Cedar Wind 5689**  
V D A R Beauty 4321  
  
V D A R Really Windy 4097  
**Gnerer Miss Ponderosa 324**  
Gnerer Miss Ponderosa 025 S

Cole Creek Cedar Ridge 1V  
V D A R Chloe 9727  
Koupal Juneau 797  
V D A R Beauty 0355  
  
A A R Really Windy 2055  
VDAR Blackbird 2031  
S A V 8180 Traveler 004  
Gnerer Ponderosa 613S

MILK	FL	CW	MARB	RE	SEN	SM	SF	SB
26	1.25	28	0	0.38	-8	85	58	76

Lot  
**103**

**GENER MAGA 5100**

DOB: 03/01/25 AAA: 21411573

CED	BW	WW	WN RATIO	YW	SC	DOC	ANGUS
12	0.2	74	100	136	0.72	25	85
							<b>BW WT</b>
							205 WT
							655
							<b>DAM PROD.</b>
							3@101

VDAR Maga 7050  
**VDAR Maga 2042**  
V D A R Rita 6219  
  
Gnerer Rocky 8112  
**Gnerer Bando 181**  
Gnerer Windy Bando 581

V D A R Maga 3068  
V D A R Miss Wix 0336  
Ginger Hill Treasure 233  
V D A R Rita 3310  
  
K C F Bennett Boulder  
Gnerer Best Time Entp 112  
Gnerer Windy Prize 3903  
Gnerer Montana Rose 281

MILK	FL	CW	MARB	RE	SEN	SM	SF	SB
29	1	50	0.79	-0.03	-11	65	87	135

Lot  
**104**

**GENER LUCKY 7- 5849**

DOB: 02/12/25 AAA: 21254743

CED	BW	WW	WN RATIO	YW	SC	DOC	ANGUS
10	-0.4	70	99	120	0.89	19	72
							<b>BW WT</b>
							205 WT
							696
							<b>DAM PROD.</b>
							6@102

T/D Doc Ryan 049  
**Herbster Lucky Seven 256**  
Herbster Blackbird 616  
  
Connealy Black Granite  
**Gnerer Black Granite 87**  
Gnerer Kays Sky 320

Casino Bomber N33  
T/D Ruby of Tiffany 824  
Herbster Sportsman 232  
Sandpoint Blackbird 8809  
  
Connealy Consensus 7229  
Eura Elga of Conanga 9109  
Sitz Upside 547W  
Gnerer Big Sky 05 M

MILK	FL	CW	MARB	RE	SEN	SM	SF	SB
24	1.25	52	0.7	1.17	-4	88	93	157

Lot  
**105**

**GENER JUSTIFIED 5013**

DOB: 01/28/25 AAA: 21411432

CED	BW	WW	WN RATIO	YW	SC	DOC	ANGUS
14	-0.1	57	99	101	0.68	13	67
							<b>BW WT</b>
							205 WT
							664
							<b>DAM PROD.</b>
							1@99

KG Justified 3023  
**Coleman Justified 132**  
Coleman Donna 504  
  
V D A R Winston 2165  
**Gnerer Miss Stout 395**  
Gnerer Miss Stout 905

Connealy Judgment  
KG Miss Magic 1443  
S A V Resource 1441  
Coleman Donna 714  
  
V D A R Churchill 1063  
V D A R Lass 3114  
V D A R Stout 1623  
Gnerer Quality Lass 271

MILK	FL	CW	MARB	RE	SEN	SM	SF	SB
20	1.17	28	0.64	0.22	-8	76	64	108

Lot  
**106**

**GENER CEDAR WIND 568-5801**

DOB: 01/20/25 AAA: 21239713

CED	BW	WW	WN RATIO	YW	SC	DOC	ANGUS
14	-0.7	59	110	102	0.92	17	60
							<b>BW WT</b>
							205 WT
							779
							<b>DAM PROD.</b>
							1@110

V D A R Cedar Wind 8111  
**VDAR Cedar Wind 5689**  
V D A R Beauty 4321  
  
LD Capitalist 316  
**Gnerer Capitalist Queen 320**  
Gnerer Winny 757

Cole Creek Cedar Ridge 1V  
V D A R Chloe 9727  
Koupal Juneau 797  
V D A R Beauty 0355  
  
Connealy Capitalist 028  
LD Dixie Erica 2053  
V D A R Winston 2165  
Gnerer Katie 579

MILK	FL	CW	MARB	RE	SEN	SM	SF	SB
28	1.19	33	0.55	0.33	-5	80	66	109

Lot  
**107**

**GENER CEDAR WIND 568-5916**

DOB: 03/13/25 AAA: 21451338

CED	BW	WW	WN RATIO	YW	SC	DOC	ANGUS
11	1.4	74	115	123	0.69	0	83
							<b>BW WT</b>
							205 WT
							809
							<b>DAM PROD.</b>
							2@109

V D A R Cedar Wind 8111  
**VDAR Cedar Wind 5689**  
V D A R Beauty 4321  
  
Deer Valley Growth Fund  
**Gnerer Trust Fund 230**  
Gnerer Miss Ponderosa 321

Cole Creek Cedar Ridge 1V  
V D A R Chloe 9727  
Koupal Juneau 797  
V D A R Beauty 0355  
  
Basin Payweight 1682  
Deer Valley Rita 36113  
VDAR Enterprise 2059  
Gnerer Ponderosa 956 S

MILK	FL	CW	MARB	RE	SEN	SM	SF	SB
26	1.18	52	0.2	0.35	-10	71	85	111

Lot  
**108**

**GENER CAPITALIST 316 - 5845**

DOB: 02/10/25 AAA: 21254770

CED	BW	WW	WN RATIO	YW	SC	DOC	ANGUS
1	2.2	55	99	89	0.66	8	84
							<b>BW WT</b>
							205 WT
							693
							<b>DAM PROD.</b>
							3@101

Connealy Capitalist 028  
**LD Capitalist 316**  
LD Dixie Erica 2053  
  
Gnerer Right Answer 114  
**Gnerer Juicy 458**  
Gnerer Lucy Juice 043 G

S A V Final Answer 0035  
Prides Pita of Conanga 8821  
C A Future Direction 5321  
LD Dixie Erica Oar 0853  
  
Connealy Right Answer 746  
Gnerer Ponderosa 507 S  
S A V 8180 Traveler 004  
Gnerer Canyon G343

MILK	FL	CW	MARB	RE	SEN	SM	SF	SB
22	1.04	32	0.36	0.23	9	60	73	105



RLG

**108**

Lot  
**109**

**GNERER DOC RYAN 5843**

DOB: 02/10/25 AAA: 21254758

CED	BW	WW	WN RATIO	YW	SC	DOC	ANGUS <sup>SS</sup>
8	0	62	94	112	1.17	15	

<b>BW WT</b>	72
<b>205 WT</b>	661
<b>DAM PROD.</b>	6@99

Casino Bomber N33  
**T/D Doc Ryan 049**  
T/D Ruby of Tiffany 824  
V D A R Winston 2165  
**Gnerer Winny 83**  
Gnerer Ponderosa 6812

KM Broken Bow 002  
Casino Annie K48  
G A R Phenom 7953  
B/R Ruby of Tiffany 688  
V D A R Churchill 1063  
V D A R Lass 3114  
Gnerer Up Side 3923  
Gnerers Miss Ponderosa S352

MILK	FL	CW	MARB	RE	\$EN	\$M	\$F	\$B
25	1.06	57	1.06	0.42	-17	64	110	175



RLG

**109**

Lot  
**110**

**GNERER DOC RYAN 5070**

DOB: 02/15/25 AAA: 21411550

CED	BW	WW	WN RATIO	YW	SC	DOC	ANGUS <sup>SS</sup>
13	-1.8	64	96	112	1.56	31	

<b>BW WT</b>	84
<b>205 WT</b>	627
<b>DAM PROD.</b>	6@102

Casino Bomber N33  
**T/D Doc Ryan 049**  
T/D Ruby of Tiffany 824  
K C F Bennett Boulder  
**Gnerer Miss Rock 801**  
Gnerer Lucy 450

KM Broken Bow 002  
Casino Annie K48  
G A R Phenom 7953  
B/R Ruby of Tiffany 688  
K C F Bennett TheRock A473  
K C F Miss 534 U431  
VDAR Enterprise 2059  
Gnerer Lucy 259

MILK	FL	CW	MARB	RE	\$EN	\$M	\$F	\$B
28	1.09	45	1.09	0.07	-8	97	80	143



V D A R BEAUTY 4321

Lot  
**111**

**GNERER POSS MAVERICK**

DOB: 02/18/25 AAA: 21411510

CED	BW	WW	WN RATIO	YW	SC	DOC	ANGUS <sup>SS</sup>
5	1	62	99	98	1.65	28	

<b>BW WT</b>	83
<b>205 WT</b>	649
<b>DAM PROD.</b>	4@104

Basin Payweight 1682  
**Poss Maverick**  
Poss Pride 5163  
V D A R Winston 2165  
**Gnerer Miss Clare RK 073**  
Gnerer Miss Clare 73

Basin Payweight 006S  
21AR O Lass 7017  
Poss Hoover Dam 2509  
Poss Pride 9526  
V D A R Churchill 1063  
V D A R Lass 3114  
V D A R Clarence 2285  
Gnerer Ida Windy 529

MILK	FL	CW	MARB	RE	\$EN	\$M	\$F	\$B
32	1.11	41	1.03	0.33	-18	58	83	149



T/D RUBY OF TIFFANY 824

PGD to Lots 3, 10, 66, 69, 81, 99, 109, 110

PGD to Lots 20, 55, 84, 86, 102, 106, 107, 112, 113, 115, 124, 131, 132, 135

Lot  
**112**

**GNERER 568 CEDAR WIND 5007**

DOB: 01/26/25 AAA: 21411361

CED	BW	WW	WN RATIO	YW	SC	DOC	ANGUS <sup>SS</sup>
15	-0.2	71	107	125	1.51	13	

<b>BW WT</b>	76
<b>205 WT</b>	717
<b>DAM PROD.</b>	1@107

V D A R Cedar Wind 8111  
**VDAR Cedar Wind 5689**  
V D A R Beauty 4321  
LD Capitalist 316  
**Gnerer Sunset 336**  
Gnerer Really Wende 9129

Cole Creek Cedar Ridge 1V  
V D A R Chloe 9727  
Koupal Juneau 797  
V D A R Beauty 0355  
Connealy Capitalist 028  
LD Dixie Erica 2053  
Gnerer Really Windy 3601  
Gnerer Sunset 042 G

MILK	FL	CW	MARB	RE	\$EN	\$M	\$F	\$B
36	1.28	57	0.6	0.7	-7	95	92	142



RLG

**112**

Lot  
**113**

**GNERER CEDAR WIND 568-5816**

DOB: 01/29/25 AAA: 21239714

CED	BW	WW	WN RATIO	YW	SC	DOC	ANGUS <sup>CS</sup>
9	1.3	66	104	123	2.04	27	

V D A R Cedar Wind 8111  
**VDAR Cedar Wind 5689**  
V D A R Beauty 4321

Cole Creek Cedar Ridge 1V  
V D A R Chloe 9727  
Koupal Juneau 797  
V D A R Beauty 0355

RL Justice  
**Gnerer Justice 4 ALL-325**  
Gnerer Windy Girl 850

KG Justified 3023  
RL Cash Lady 8988  
Gnerer Really Windy 3601  
Gnerer Black Rose NDY 853G

BW WT
70
205 WT
737
DAM PROD.
1@104

MILK	FL	CW	MARB	RE	SEN	SM	SF	SB
34	1.29	51	0.42	0.79	-17	93	80	123



RLG

**113**

Lot  
**114**

**GNERER 316 CAPITALIST 5000**

DOB: 01/19/25 AAA: 21411585

CED	BW	WW	WN RATIO	YW	SC	DOC	ANGUS <sup>CS</sup>
7	0	63	105	117	0.71	14	

Connealy Capitalist 028  
**LD Capitalist 316**  
LD Dixie Erica 2053

S A V Final Answer 0035  
Prides Pita of Conanga 8821  
C A Future Direction 5321  
LD Dixie Erica Oar 0853

Gnerer Son Shine 0176  
**Gnerer Ida 377**  
Gnerer Extra Prize 677

Mr Son Shine 4518  
Gnerer Sunset 509  
Gnerer Windy Prize 3903  
Gnerer Sunset Wind 499

BW WT
85
205 WT
701
DAM PROD.
1@105

MILK	FL	CW	MARB	RE	SEN	SM	SF	SB
36	1.09	50	0.31	0.53	-36	44	94	129

Lot  
**118**

**GNERER 06 TRIBUTE 5118**

DOB: 03/08/25 AAA: 21484246

CED	BW	WW	WN RATIO	YW	SC	DOC	ANGUS <sup>CS</sup>
4	1.3	57	110	93	1.32	21	

Mc Cumber Tribute 702  
**Gnerer Tribute 3006**  
Ida Extra 799 A A R

Mc Cumber Tremendous 2008  
Lassie 113 of Mc Cumber  
A A R Extra 814  
Cash Flow Ida 285 A A R

Janssen Cartwright 9105  
**Gnerer Marian 325**  
Gnerer Prize 10

S A V President 6847  
Janssen Madame Pride 5102  
Gnerer Rocky 8663  
Gnerer Marian 947

BW WT
76
205 WT
722
DAM PROD.
1@110

MILK	FL	CW	MARB	RE	SEN	SM	SF	SB
21	1.08	30	0.12	0.27	3	79	57	80

Lot  
**115**

**GNERER CEDAR WIND 568-5833**

DOB: 02/05/25 AAA: 21246280

CED	BW	WW	WN RATIO	YW	SC	DOC	ANGUS <sup>CS</sup>
12	-0.6	61	112	96	0.2	20	

V D A R Cedar Wind 8111  
**VDAR Cedar Wind 5689**  
V D A R Beauty 4321

Cole Creek Cedar Ridge 1V  
V D A R Chloe 9727  
Koupal Juneau 797  
V D A R Beauty 0355

Connealy Black Granite  
**Gnerer Granite 546**  
Gnerer Ponderosa 904 S

Connealy Consensus 7229  
Eura Elga of Conanga 9109  
Gnerer Date Line 550  
Gnerer Ponderosa 613S

BW WT
84
205 WT
785
DAM PROD.
9@101

MILK	FL	CW	MARB	RE	SEN	SM	SF	SB
26	1.24	23	0.19	0.43	9	101	48	74

Lot  
**119**

**GNERER STEP UP 5840**

DOB: 02/07/25 AAA: 21296611

CED	BW	WW	WN RATIO	YW	SC	DOC	ANGUS <sup>CS</sup>
4	1.3	71	118	117	2.2	22	

G A R Big Step K715  
**EZAR Step Up 9178**  
Basin Lucy 4261

G A R Sure Fire  
Chair Rock Prophet 3131  
EXAR Denver 2002B  
Basin Lucy 1022

U-2 Coalition 206C  
**Gnerer Classy Coalition 221**  
Gnerer Lorla 360

HF Syndicate 213Z  
U2 Erelite 109Z  
VDAR Enterprise 2059  
Gnerer Merels R T R304

BW WT
68
205 WT
829
DAM PROD.
2@114

MILK	FL	CW	MARB	RE	SEN	SM	SF	SB
25	1.11	51	1.04	0.57	-21	90	85	153

Lot  
**116**

**GNERER 33 CAPITLST 5015**

DOB: 01/29/25 AAA: 21411359

CED	BW	WW	WN RATIO	YW	SC	DOC	ANGUS <sup>CS</sup>
4	2.4	73	106	126	1.2	29	

LD Capitalist 316  
**Gnerer 316 Cap 3033**  
Gnerer Patty 167

Connealy Capitalist 028  
LD Dixie Erica 2053  
Deep Creek 38 Special 900  
Patty 19-747

V D A R Winston 2165  
**Gnerer Miss Right 390**  
Gnerer Miss Right 08

V D A R Churchill 1063  
V D A R Lass 3114  
VDAR Showdown 7236  
Gnerer Miss Right 581

BW WT
88
205 WT
710
DAM PROD.
1@106

MILK	FL	CW	MARB	RE	SEN	SM	SF	SB
33	1.08	60	0.26	0.28	-29	64	97	125

Lot  
**117**

**GNERER C-JUSTIFIED 132 -5827**

DOB: 02/03/25 AAA: 21239708

CED	BW	WW	WN RATIO	YW	SC	DOC	ANGUS <sup>CS</sup>
6	2	72	106	129	1.47	23	

KG Justified 3023  
**Coleman Justified 132**  
Coleman Donna 504

Connealy Judgment  
KG Miss Magic 1443  
S A V Resource 1441  
Coleman Donna 714

VDAR Cedar Wind 5689  
**Gnerer Cedar Girl 568-368**  
Gnerer Big Sky 526

V D A R Cedar Wind 8111  
V D A R Beauty 4321  
VDAR Enterprise 2059  
Gnerer Big Sky 386

BW WT
70
205 WT
748
DAM PROD.
1@106

MILK	FL	CW	MARB	RE	SEN	SM	SF	SB
25	1.07	44	0.28	0.31	-26	69	72	103



RLG

**119**

Whatever you do, work at it with all your heart, as working for the Lord, not for men.

Colossians 3:23

Lot  
**120**

**GENERER 33 CAPITLST 5030**

DOB: 02/02/25 AAA: 21411433

CED	BW	WW	WN RATIO	YW	SC	DOC	ANGUS
16	-2.2	54	98	92	1.01	14	SS

LD Capitalist 316  
**Gnerer 316 Cap 3033**  
Gnerer Patty 167

Janssen Cartwright 9105  
**Gnerer Miss Marian 346**  
Gnerer Miss Marian Prize 02

Connealy Capitalist 028  
LD Dixie Erica 2053  
Deep Creek 38 Special 900  
Patty 19-747

S A V President 6847  
Janssen Madame Pride 5102  
V D A R Winston 2165  
Gnerer Miss BC Prize 822

BW WT	DAM	PROD.
69		
205 WT		
654		
	DAM	PROD.
		1@98

MILK	FL	CW	MARB	RE	SEN	SM	SF	SB
29	1.21	33	0.35	0.6	-4	72	73	108

Lot  
**121**

**GENERER CEDAR WIND 462-5903**

DOB: 03/09/25 AAA: 21312438

CED	BW	WW	WN RATIO	YW	SC	DOC	ANGUS
8	1	61	110	99	0.85	-2	SS

V D A R Cedar Wind 8111  
**VDAR Cedar Wind 4628**  
V D A R Elluna 5858

Gnerer Winston 7571  
**Gnerer Winny 976**  
Gnerer Kala 327

Cole Creek Cedar Ridge 1V  
V D A R Chloe 9727  
V D A R Black Train 1243  
VDAR Elluna 3765

V D A R Winston 2165  
Gnerer Prediction 571  
VDAR Enterprise 2059  
Gnerer Madam 821 M

BW WT	DAM	PROD.
78		
205 WT		
775		
	DAM	PROD.
		4@99

MILK	FL	CW	MARB	RE	SEN	SM	SF	SB
28	1.27	39	0.03	0.12	-20	67	73	89

Lot  
**122**

**GENERER TREMENDOUS 5123**

DOB: 03/13/25 AAA: 21462463

CED	BW	WW	WN RATIO	YW	SC	DOC	ANGUS
8	0.1	56	94	102	0.38	14	SS

Mc Cumber 2008 Trmndous 722  
**Mc Cumber 722 Trmndous 9213**  
Miss Wix 728 of Mc Cumber

Gnerer Rocky 8112  
**Gnerer Beauty 053**  
Gnerer Beauty 4260

Mc Cumber Tremendous 2008  
Miss Wix 175 of Mc Cumber  
O C C Unmistakable 946U  
Miss Wix 2195 of Mc Cumber

K C F Bennett Boulder  
Gnerer Best Time Entp 112  
Gnerer Bismarck 229  
Gnerer Beauty 260

BW WT	DAM	PROD.
80		
205 WT		
618		
	DAM	PROD.
		4@102

MILK	FL	CW	MARB	RE	SEN	SM	SF	SB
28	1.14	27	0.07	0.01	-2	74	53	64

Lot  
**123**

**GENERER JUSTIFIED 914-5810**

DOB: 01/26/25 AAA: 21254686

CED	BW	WW	WN RATIO	YW	SC	DOC	ANGUS
8	0.8	66	98	118	1.24	18	SS

KG Justified 3023  
**GDAR Justified 914**  
GDAR Forever Lady 7533

Coleman Banker 9215  
**Gnerer Heiress 308**  
Gnerer Guinness Girl 831-192

Connealy Judgment  
KG Miss Magic 1443  
Sitz Reinvested 636a  
GDAR Forever Lady 1138

Coleman Bravo 6313  
Coleman Donna 4203  
Gnerer Guinness 831  
Gnerer Capitalist 582

BW WT	DAM	PROD.
60		
205 WT		
693		
	DAM	PROD.
		1@98

MILK	FL	CW	MARB	RE	SEN	SM	SF	SB
23	1.17	51	0.51	0.39	-13	97	99	142

Lot  
**124**

**GENERER 568 CEDAR WIND 5005**

DOB: 01/24/25 AAA: 21462455

CED	BW	WW	WN RATIO	YW	SC	DOC	ANGUS
9	-0.4	51	98	81	1.51	27	SS

V D A R Cedar Wind 8111  
**VDAR Cedar Wind 5689**  
V D A R Beauty 4321

Coleman Bravo 6313  
**Gnerer Ida 354**  
Gnerer BC Queen 86

Cole Creek Cedar Ridge 1V  
V D A R Chloe 9727  
Koupal Juneau 797  
V D A R Beauty 0355

Coleman Charlo 0256  
Coleman Donna 714  
V D A R Black Cedar 8380  
Ida Extra 799 A A R

BW WT	DAM	PROD.
70		
205 WT		
657		
	DAM	PROD.
		1@98

MILK	FL	CW	MARB	RE	SEN	SM	SF	SB
33	1.22	18	0.31	0.2	17	108	45	74

Lot  
**125**

**GENERER TREMENDOUS 5106**

DOB: 03/03/25 AAA: 21411300

CED	BW	WW	WN RATIO	YW	SC	DOC	ANGUS
7	1	49	99	80	0.45	2	SS

Mc Cumber 2008 Trmndous 722  
**Mc Cumber 722 Trmndous 9213**  
Miss Wix 728 of Mc Cumber

V D A R Stout 1623  
**Gnerer Stout 037**  
Gnerer Lucy Hero 712

Mc Cumber Tremendous 2008  
Miss Wix 175 of Mc Cumber  
O C C Unmistakable 946U  
Miss Wix 2195 of Mc Cumber

V D A R Black Cedar 8380  
V D A R Lass 0464  
DFA Hero 6017  
Gnerer Lucy M 763

BW WT	DAM	PROD.
83		
205 WT		
651		
	DAM	PROD.
		4@97

MILK	FL	CW	MARB	RE	SEN	SM	SF	SB
21	1.24	8	-0.09	0.16	8	77	35	48

Lot  
**126**

**GENERER JUSTIFIED 5134**

DOB: 03/27/25 AAA: 21411545

CED	BW	WW	WN RATIO	YW	SC	DOC	ANGUS
2	3.6	81	118	130	2.11	21	SS

KG Justified 3023  
**Coleman Justified 132**  
Coleman Donna 504

Gnerer Rocky 8663  
**Gnerer Quality 236**  
Gnerer Miss Marian 919

Connealy Judgment  
KG Miss Magic 1443  
S A V Resource 1441  
Coleman Donna 714

K C F Bennett Boulder  
Gnerer Uptown Girl 663  
V D A R Winston 2165  
Gnerer Quality Black 929 M

BW WT	DAM	PROD.
90		
205 WT		
777		
	DAM	PROD.
		1@118

MILK	FL	CW	MARB	RE	SEN	SM	SF	SB
24	1.21	56	0.55	0.28	-24	93	87	127

Lot  
**127**

**GENERER BRAVO 5061**

DOB: 02/13/25 AAA: 21462461

CED	BW	WW	WN RATIO	YW	SC	DOC	ANGUS
15	-2.4	43	90	80	0.37	29	SS

Coleman Charlo 0256  
**Gnerer Bravo 6313**  
Coleman Donna 714

Gnerer Really Windy 3601  
**Gnerer Really Wende 9129**  
Gnerer Sunset 042 G

O C C Paxton 730P  
Bohi Abigale 6014  
Connealy Onward  
Coleman Donna 386

V D A R Really Windy 4097  
Gnerer Black Rose SA04 G  
Vermilion X Factor  
Gnerer Big Pride G 152

BW WT	DAM	PROD.
79		
205 WT		
593		
	DAM	PROD.
		5@100

MILK	FL	CW	MARB	RE	SEN	SM	SF	SB
28	1.2	30	-0.15	0.63	16	107	68	81



Lot  
**128**

**GENERER 972 CLARENCE 5087**

DOB: 02/24/25 AAA: 21411408

CED	BW	WW	WN RATIO	YW	SC	DOC	ANGUS
6	0.3	40	96	64	0.08	3	SS

V D A R Clarence 2285  
**Gnerer Clarence 972**  
Gnerer Marian Corners 72

Gnerer Blk Cedar Prize 4112  
**Gnerer Miss BC Prize Y825**  
Gnerer Sunset 497

Ginger Hill Treasure 233  
V D A R Elluna 3105  
V D A R Winston 2165  
Gnerer Tressa's Corner 528

V D A R Black Cedar 8380  
Gnerer Best Time Entp 112  
V D A R Cedar Wind 8111  
Gnerer Sunset 297

BW WT	DAM	PROD.
86		
205 WT		
627		
	DAM	PROD.
		5@94

MILK	FL	CW	MARB	RE	SEN	SM	SF	SB
17	1.18	16	0.49	-0.22	22	79	50	81

# GNERER ANGUS



Our family remains committed to raising high-quality registered Black Angus cattle with *integrity, innovation*, and a deep respect for the *land* and *livestock*.



*Visit us online*

**[www.GnererAngus.com](http://www.GnererAngus.com)**

# AMERICAN ANGUS ASSOCIATION SELECTION TOOLS

**Expected Progeny Difference (EPD)**, is the prediction of how future progeny of each animal are expected to perform relative to the progeny of other animals listed in the database. EPDs are expressed in units of measure for the trait, plus or minus. Interim EPDs may appear on young animals when their performance has yet to be incorporated into the American Angus Association National Cattle Evaluation (NCE) procedures. This EPD will be preceded by an "I", and may or may not include the animal's own performance record for a particular trait, depending on its availability, appropriate contemporary grouping, or data edits needed for NCE.

**Accuracy (ACC)**, is the reliability that can be placed on the EPD. Accuracy will range from 0 to 1 with an accuracy closer to 1.0 indicating higher reliability. Accuracy is impacted by the amount of information that is included in the analysis including individual genotype and performance records as well as number of progeny and ancestral records.

## PRODUCTION

**Calving Ease Direct (CED)**, expressed as a difference in percentage of unassisted births, with a higher value indicating greater calving ease in first-calf heifers. It predicts the average difference in ease with which a sire's calves will be born when he is bred to first-calf heifers.

**Birth Weight (BW)**, expressed in pounds, is a predictor of a sire's ability to transmit birth weight to his progeny compared to that of other sires.

**Weaning Weight (WW)**, expressed in pounds, is a predictor of a sire's ability to transmit weaning growth to his progeny compared to that of other sires.

**Yearling Weight (YW)**, expressed in pounds, is a predictor of a sire's ability to transmit yearling growth to his progeny compared to that of other sires.

**Residual Average Daily Gain (RADG)**, feed efficiency expressed in pounds per day, is a predictor of a sire's genetic ability for post-weaning gain in future progeny compared to that of other sires, given a constant amount of feed consumed.

**Dry Matter Intake (DMI)**, expressed in pounds per day, is a predictor of difference in transmitting ability for feed intake during the post-weaning phase, compared to that of other sires.

**Yearling Height (YH)**, expressed in inches, is a predictor of a sire's ability to transmit yearling height compared to that of other sires.

**Scrotal Circumference (SC)**, expressed in centimeters, is a predictor of the difference in transmitting scrotal size compared to that of other sires.

## MANAGEMENT

**Claw Set (Claw)**, expressed in units of claw-set score, a lower EPD is more favorable, indicating a sire will produce progeny with more symmetrical, even and appropriately spaced toes compared to another sire.

**Foot Angle (Angle)**, expressed in units of foot-angle score, a lower EPD is more favorable, indicating a sire will produce progeny with an angle closer to 45 degrees at the pastern and appropriate toe length and heel depth compared to another sire.

**Docility (DOC)**, expressed as a difference in yearling cattle temperament, with a higher value indicating more favorable docility in a sire's offspring compared to another sire.

**Pulmonary Arterial Pressure EPD (PAP)**, expressed in millimeters of Mercury (mmHg), with a lower EPD being more favorable indicating a sire should produce progeny with a lower PAP score to decrease the risk of progeny contracting high altitude disease most commonly experienced at 5,500 ft or greater in elevation.

**Hair Shed EPD (HS)**, expressed in units of hair shed score, with a lower EPD being more favorable. This indicates a sire should produce progeny who shed their winter coat earlier in the spring and has improved environmental adaptability in heat stressed areas and grazing endophyte-infected (hot) fescue.

## MATERNAL

**Heifer Pregnancy (HP)**, is a selection tool to increase the probability or chance of a sire's daughters becoming pregnant as first-calf heifers during a normal breeding season. A higher EPD is the more favorable direction, and the EPD is reported in percentage units.

**Calving Ease Maternal (CEM)**, expressed as a difference in percentage of unassisted births, with a higher value indicating greater calving ease in first-calf daughters. It predicts the average ease with which a sire's daughters will calve as first-calf heifers when compared to daughters of other sires.

**Maternal Milk (Milk)**, expressed in pounds of calf weaned, is a predictor of a sire's genetic merit for milk and mothering ability in his daughters. In other words, it is the part of the calf's weaning weight attributes to milk and mothering ability.

**Mature Weight (MW)**, expressed in pounds, is a predictor of the difference in mature weight of daughters of a sire compared to the daughters of other sires.

**Mature Height (MH)**, expressed in inches, is a predictor of the difference in mature height of a sire's daughters compared to daughters of other sires.

## CARCASS

**Carcass Weight (CW)**, expressed in pounds, is a predictor of the differences in hot carcass weight of a sire's progeny compared to progeny of other sires.

**Marbling (Marb)**, expressed as a fraction of the difference in USDA marbling score of a sire's progeny compared to progeny of other sires.

**Ribeye Area (RE)**, expressed in square inches, is a predictor of the difference in ribeye area of a sire's progeny compared to progeny of other sires.

**Fat Thickness EPD (Fat)**, expressed in inches, is a predictor of the differences in external fat thickness at the 12th rib (as measured between the 12th and 13th ribs) of a sire's progeny compared to progeny of other sires.

## \$VALUE INDEXES

**\$Value Indexes**, expressed in dollars per head, are multi-trait selection indexes where a higher value suggests more profit. The \$Value is an estimate of how future progeny of each sire are expected to perform, on average, compared to progeny of other sires if sires were randomly mated to cows and if calves were exposed to the same environment.

**Maternal Weaned Calf Value (\$M)**, expressed in dollars per head, predicts profitability differences in progeny due to genetics from conception to weaning by decreasing mature cow size and improving docility, foot structure and fertility while maintaining weaning weights consistent with today's production.

**Weaned Calf Value (\$W)**, expressed in dollars per head, provides the expected difference in future progeny pre-weaning performance from birth to weaning.

**Energy Value (\$EN)**, expressed in dollar savings per cow per year with a larger value being more favorable. It assesses differences in cow energy requirements, due to maternal milk and mature cow size.

**Feedlot Value (\$F)**, expressed in dollars per head, is the expected average difference in future progeny performance for post-weaning feedlot merit (growth and feed efficiency) compared to progeny of other sires assuming producers retain ownership of cattle through the feedlot phase and sell on a carcass-weight basis.

**Grid Value (\$G)**, expressed in dollars per carcass, is the expected average difference in future progeny performance for carcass grid merit, including quality and yield grade attributes, compared to progeny of other sires.

**Beef Value (\$B)**, expressed in dollars per carcass, represents the expected average differences in the progeny post-weaning performance and carcass value compared to progeny of other sires. This index assumes commercial producers wean all male and female progeny, retain ownership of these animals through the feedlot and sell on a carcass merit grid.

**Combined Value (\$C)**, expressed in dollars per head, which includes all traits that make up both Maternal Weaned Calf Value (\$M) and Beef Value (\$B) with the objective that commercial producers will replace 20% of their breeding females per year with replacement heifers retained within their own herd. The remaining cull heifer and steer progeny are then assumed to be sent to the feedlot where the producers retain ownership of those cattle and sell them on a quality-based carcass merit grid.



## 2 YEAR-OLD-BULLS

Lot  
**129**

### GNERER 316 CAPITALIST 4058

DOB: 02/15/24 AAA: 21147609

GED	BW	WW	WN RATIO	YW	SC	DOC	ANGUS <sup>GS</sup>
6	1.6	71	123	113	0.12	13	

Connealy Capitalist 028 S A V Final Answer 0035  
**LD Capitalist 316** Prides Pita of Conanga 8821  
 LD Dixie Erica 2053 C A Future Direction 5321  
 LD Dixie Erica Oar 0853  
 Gnerer Really Windy 2044 V D A R Really Windy 4097  
**Gnerer Teka Wind 44 4275** Gnerer Lucy 044 M  
 Gnerer Teaka 275 Gnerer Danny Boy 990 G  
 Gnerer Teakas Mate 950 M

MILK	FL	CW	MARB	RE	SEN	SM	SF	SB
23	1.07	44	0.47	0.28	-16	67	88	128

BW WT
86
205 WT
801
DAM
PROD.
8@100



RLG

**129**

Lot  
**130**

### GNERER SHOWDOWN 505-493

DOB: 03/01/24 AAA: 21108563

GED	BW	WW	WN RATIO	YW	SC	DOC	ANGUS <sup>GS</sup>
4	1.2	61	100	112	0.98	11	

VDAR Showdown 7236 V D A R Sonny Boy 1194  
**VDAR Showdown 5059** V D A R Forever Lady 1409  
 V D A R Lucy 7950 V D A R Cedar Wind 8111  
 V D A R Lucy 5354  
 Gnerer Danny Boy 990 G Connealy Danny Boy  
**Gnerer Quality Lass 370** Gnerer Black Rose SA04 G  
 Gnerer Quality Lass 927 Boyd New Day 8005  
 Gnerer Skys Widespread R325

MILK	FL	CW	MARB	RE	SEN	SM	SF	SB
28	1.14	44	-0.02	0.57	-19	54	82	105

BW WT
85
205 WT
678
DAM
PROD.
10@99



RLG

**130**

Lot  
**131**

### GNERER 568 CW 4023

DOB: 02/02/24 AAA: 21146428

GED	BW	WW	WN RATIO	YW	SC	DOC	ANGUS <sup>GS</sup>
4	4.3	63	101	113	1.05	6	

V D A R Cedar Wind 8111 Cole Creek Cedar Ridge 1V  
**VDAR Cedar Wind 5689** V D A R Chloe 9727  
 V D A R Beauty 4321 Koupal Juneau 797  
 V D A R Beauty 0355  
 V D A R Stout 1623 V D A R Black Cedar 8380  
**Gnerer Windy 050** V D A R Lass 0464  
 Gnerer Windy Prize 5011 Gnerer Really Windy 3601  
 Gnerer Tressa 011 M

MILK	FL	CW	MARB	RE	SEN	SM	SF	SB
32	1.11	39	0.24	0.47	-14	55	74	107

BW WT
95
205 WT
656
DAM
PROD.
4@101

Lot  
**132**

### GNERER 568 CW 4033

DOB: 02/06/24 AAA: 21146432

GED	BW	WW	WN RATIO	YW	SC	DOC	ANGUS <sup>GS</sup>
10	1.9	60	92	104	1.43	7	

V D A R Cedar Wind 8111 Cole Creek Cedar Ridge 1V  
**VDAR Cedar Wind 5689** V D A R Chloe 9727  
 V D A R Beauty 4321 Koupal Juneau 797  
 V D A R Beauty 0355  
 Mc Cumber 722 Trmndous 9213 Mc Cumber 2008 Trmndous 722  
**Gnerer Enterprise 263** Miss Wix 728 of Mc Cumber  
 Gnerer Miss BC Prize 834 Gnerer Blk Cedar Prize 4112  
 Gnerer Tressa's Wind 510

MILK	FL	CW	MARB	RE	SEN	SM	SF	SB
33	1.12	29	-0.01	0.38	-5	62	54	72

BW WT
69
205 WT
599
DAM
PROD.
1@92

Lot  
**133**

**GNERER C-JUSTIFIED 4826**

DOB: 02/03/24 AAA: 20957128

CED	BW	WW	WN RATIO	YW	SC	DOC	ANGUS
12	-0.4	50	86	95	0.92	31	CS

KG Justified 3023  
**Coleman Justified 132**  
Coleman Donna 504

V D A R Winston 2165  
**Gnerer Winny Girl 290**  
Gnerer Uptown Girl 691

Connealy Judgment  
KG Miss Magic 1443  
S A V Resource 1441  
Coleman Donna 714  
V D A R Churchill 1063  
V D A R Lass 3114  
Gnerer Up Side 3923  
Gnerer Big Pride G 152

BW WT
71
205 WT
577
DAM
PROD.
2@87

MILK	FL	CW	MARB	RE	SEN	SM	SF	SB
26	1.17	41	0.72	0.28	-9	72	87	137

Lot  
**134**

**GNERER BRAVO 4052**

DOB: 02/11/24 AAA: 21149721

CED	BW	WW	WN RATIO	YW	SC	DOC	ANGUS
6	3.2	67	92	123	0.63	20	CS

Coleman Charlo 0256  
**Coleman Bravo 6313**  
Coleman Donna 714

O C C Unmistakable 946U  
**Rosetta 990 of Mc Cumber**  
Rosetta 1231 of Mc Cumber

O C C Paxton 730P  
Bohi Abigale 6014  
Connealy Onward  
Coleman Donna 386  
O C C Paxton 730P  
FCC Revolution Rose 2476  
Sinclair Extra 4X13  
Rosetta 7174 of Mc Cumber

BW WT
80
205 WT
600
DAM
PROD.
3@100

MILK	FL	CW	MARB	RE	SEN	SM	SF	SB
28	1.23	53	0.31	0.46	4	116	93	127

Lot  
**135**

**GNERER CEDAR WIND 568-4847**

DOB: 02/08/24 AAA: 20925685

CED	BW	WW	WN RATIO	YW	SC	DOC	ANGUS
7	1.8	66	97	106	1.1	18	CS

V D A R Cedar Wind 8111  
**VDAR Cedar Wind 5689**  
V D A R Beauty 4321

Gnerer Really Windy 3601  
**Gnerer Windy Girl 850**  
Gnerer Black Rose NDY 853G

Cole Creek Cedar Ridge 1V  
V D A R Chloe 9727  
Koupal Juneau 797  
V D A R Beauty 0355  
V D A R Really Windy 4097  
Gnerer Black Rose SA04 G  
Boyd New Day 8005  
G P G Black Rose G 020

BW WT
87
205 WT
648
DAM
PROD.
5@91

MILK	FL	CW	MARB	RE	SEN	SM	SF	SB
26	1.21	30	0.13	0.75	-6	90	57	89

Lot  
**136**

**GNERER 866 ROCKY 4095**

DOB: 03/08/24 AAA: 21146455

CED	BW	WW	WN RATIO	YW	SC	DOC	ANGUS
6	0.9	55	104	97	0.75	13	CS

K C F Bennett Boulder  
**Gnerer Rocky 8663**  
Gnerer Uptown Girl 663

Gnerer Blk Cedar Prize 4112  
**Gnerer Miss BC Prize 830**  
Gnerer Windy Bando 581

K C F Bennett TheRock A473  
K C F Miss 534 U431  
Gnerer Up Side 3923  
Gnerer Rose 34  
V D A R Black Cedar 8380  
Gnerer Best Time Entp 112  
Gnerer Windy Prize 3903  
Gnerer Montana Rose 281

BW WT
80
205 WT
657
DAM
PROD.
5@103

MILK	FL	CW	MARB	RE	SEN	SM	SF	SB
31	1.11	39	0.09	0.34	-20	58	76	98

Lot  
**137**

**GNERER TREMENDOUS 4096**

DOB: 03/08/24 AAA: 21146456

CED	BW	WW	WN RATIO	YW	SC	DOC	ANGUS
0	3.7	65	102	111	0.67	27	CS

Mc Cumber 2008 Trmndous 722  
**Mc Cumber 722 Trmndous 9213**  
Miss Wix 728 of Mc Cumber

Gnerer Rocky 8663  
**Gnerer Black Rose 124**  
Gnerer Miss BC Prize 824

Mc Cumber Tremendous 2008  
Miss Wix 175 of Mc Cumber  
O C C Unmistakable 946U  
Miss Wix 2195 of Mc Cumber  
K C F Bennett Boulder  
Gnerer Uptown Girl 663  
Gnerer Blk Cedar Prize 4112  
Gnerer Black Rose 429

BW WT
81
205 WT
644
DAM
PROD.
3@104

MILK	FL	CW	MARB	RE	SEN	SM	SF	SB
21	1.1	43	0.18	0.46	-20	63	74	103

Lot  
**138**

**GNERER BLASTOFF 4048**

DOB: 02/10/24 AAA: 21240166

CED	BW	WW	WN RATIO	YW	SC	DOC	ANGUS
2	2.7	52	91	100	1.84	24	CS

VDAR 4321 Blastoff 7230  
**VDAR Blastoff 2762**  
VDAR Polly 9220

V D A R Stout 1623  
**Gnerer ST Prize 151**  
Gnerer Prize Rito 353

V D A R Stout 6287  
V D A R Beauty 4321  
V D A R Cedar Wind 5126  
V D A R Polly 7927  
V D A R Black Cedar 8380  
V D A R Lass 0464  
VDAR Enterprise 2059  
Gnerer Quality Black 929 M

BW WT
83
205 WT
575
DAM
PROD.
3@90

MILK	FL	CW	MARB	RE	SEN	SM	SF	SB
21	1.15	38	0.46	0.03	-2	64	90	121

Lot  
**139**

**GNERER RL JUSTICE 4859**

DOB: 02/10/24 AAA: 20955552

CED	BW	WW	WN RATIO	YW	SC	DOC	ANGUS
5	1.4	58	86	110	1.43	23	CS

KG Justified 3023  
**RL Justice**  
RL Cash Lady 8988

Gnerer Winston 7571  
**Gnerer Winny Girl 571-0259**  
Gnerer Capitalist 769

Connealy Judgment  
KG Miss Magic 1443  
Barstow Cash  
RL Mandate lady 2981  
V D A R Winston 2165  
Gnerer Prediction 571  
Gnerer Capitalist 5364  
Gnerer Date Line 902

BW WT
85
205 WT
576
DAM
PROD.
3@95

MILK	FL	CW	MARB	RE	SEN	SM	SF	SB
26	1.06	38	0.28	0.23	-13	80	82	109



At Gnerer Angus, we believe that great bulls start with exceptional cows. With *decades of dedication* to quality genetics, maternal strength, and data-driven breeding, we proudly offer registered Black Angus cattle that thrive in the rugged Montana landscape. Our family-run operation is rooted in tradition, innovation, and a passion for producing cattle that *deliver results*.



Lot  
**140**

**GNERER 0123 TAHOE 4076**

DOB: 02/24/24 AAA: 21184096

CED	BW	WW	WN RATIO	YW	SC	DOC	ANGUS6S
10	0.5	67	113	118	0.94	23	

Tehama Tahoe B767  
**Gnerer Tahoe 0123**  
Gnerer Rose 531

Tehama Upward Y238  
Tehama Mary Blackbird Y684  
Basin Payweight 1682  
Gnerer Black Rose 871g

V D A R Clarence 2285  
**Gnerer Black Pearl 23**  
Gnerer Miss Answer 012

Ginger Hill Treasure 233  
V D A R Elluna 3105  
VDAR Showdown 7236  
Gnerer Miss Answer 556

BW WT
72
205 WT
712
DAM
PROD.
2@110

MILK	FL	CW	MARB	RE	SEN	SM	SF	SB
33	1.24	51	0.61	0.23	-20	90	90	133

Lot  
**141**

**GNERER PLAY BOOK 0118- 4904**

DOB: 03/09/24 AAA: 20959170

CED	BW	WW	WN RATIO	YW	SC	DOC	ANGUS6S
1	2.1	65	100	103	1.39	21	

TEX Playbook 5437  
**Gnerer Play Book 0118**  
Gnerer Teaka 435

Basin Payweight 1682  
Rita 1C43 of 9M26 Complete  
V D A R Cedar Wind 8111  
Gnerer Teaka 20

Gnerer Right Answer 114  
**Gnerer Lucy 462**  
Gnerer Lucy 057 M

Connealy Right Answer 746  
Gnerer Ponderosa 507 S  
Gnerer New Rise C 784  
Gnerer Dannys Lucy J R 632 M

BW WT
88
205 WT
667
DAM
PROD.
10@98

MILK	FL	CW	MARB	RE	SEN	SM	SF	SB
28	1.16	29	0.42	-0.16	-5	76	58	87

Lot  
**142**

**GNERER BRAVO 4062**

DOB: 02/17/24 AAA: 21149736

CED	BW	WW	WN RATIO	YW	SC	DOC	ANGUS6S
14	-0.6	56	106	100	0.82	31	

Coleman Charlo 0256  
**Coleman Bravo 6313**  
Coleman Donna 714

O C C Paxton 730P  
Bohi Abigale 6014  
Connealy Onward  
Coleman Donna 386

K C F Bennett Boulder  
**Gnerer Miss Rock 801**  
Gnerer Lucy 450

K C F Bennett TheRock A473  
K C F Miss 534 U431  
VDAR Enterprise 2059  
Gnerer Lucy 259

BW WT
75
205 WT
668
DAM
PROD.
6@102

MILK	FL	CW	MARB	RE	SEN	SM	SF	SB
26	1.1	41	0.32	0.13	4	96	77	105

Lot  
**143**

**GNERER TREMENDOUS 4077**

DOB: 02/25/24 AAA: 21146444

CED	BW	WW	WN RATIO	YW	SC	DOC	ANGUS6S
6	1.7	60	106	98	0.17	23	

Mc Cumber 2008 Trmndous 722  
**Mc Cumber 722 Trmndous 9213**  
Miss Wix 728 of Mc Cumber

Mc Cumber Tremendous 2008  
Miss Wix 175 of Mc Cumber  
O C C Unmistakable 946U  
Miss Wix 2195 of Mc Cumber

VDAR Showdown 7236  
**Gnerer Sunset 142**  
Gnerer Sunset Corner 67

V D A R Sonny Boy 1194  
V D A R Forever Lady 1409  
V D A R Four Corners 8232  
Gnerer Sunset 297

BW WT
71
205 WT
668
DAM
PROD.
3@106

MILK	FL	CW	MARB	RE	SEN	SM	SF	SB
15	1.23	31	0.86	0.33	-3	69	61	120

Lot  
**144**

**GNERER COALITION 4053**

DOB: 02/12/24 AAA: 21147397

CED	BW	WW	WN RATIO	YW	SC	DOC	ANGUS6S
1	3.3	56	103	104	0.1	26	

HF Syndicate 213Z  
**U-2 Coalition 206C**  
U2 Erelite 109Z

Connealy Consensus 7229  
HF Miss Blackcap 27R  
Young Dale Xclusive 25X  
U-2 Erelite 1X

V D A R Winston 2165  
**Gnerer Marian 75**  
Gnerer Tressa 011 M

V D A R Churchill 1063  
V D A R Lass 3114  
VDAR Enterprise 2059  
Gnerer Tressa 829M

BW WT
84
205 WT
671
DAM
PROD.
7@102

MILK	FL	CW	MARB	RE	SEN	SM	SF	SB
34	1.04	39	0.6	0.16	-27	41	79	123

Lot  
**145**

**COMMERCIAL - TAG 4863**

DOB: 02/15/24 AAA: N/A

CED	BW	WW	WN RATIO	YW	SC	DOC	ANGUS6S

BW WT
72
205 WT
660
DAM
PROD.

MILK	FL	CW	MARB	RE	SEN	SM	SF	SB

Lot  
**146**

**GNERER 972 CLARENCE 4084**

DOB: 02/29/24 AAA: 21146448

CED	BW	WW	WN RATIO	YW	SC	DOC	ANGUS6S
2	2.2	53	99	103	0.67	5	

V D A R Clarence 2285  
**Gnerer Clarence 972**  
Gnerer Marian Corners 72

Ginger Hill Treasure 233  
V D A R Elluna 3105  
V D A R Winston 2165  
Gnerer Tressa's Corner 528

Gnerer New Day 984 G  
**Gnerer Early Girl 265**  
Gnerer Kay 210 651 M

Boyd New Day 8005  
Gnerer Canyon G341  
Gnerer Big Date G 210  
Gnerer Early Girl R339

BW WT
85
205 WT
625
DAM
PROD.
10@97

MILK	FL	CW	MARB	RE	SEN	SM	SF	SB
25	1.19	45	0.4	0.13	-8	70	84	115

Lot  
**147**

**GNERER 0118 PLAY BOOK 4107**

DOB: 03/29/24 AAA: 21511946

CED	BW	WW	WN RATIO	YW	SC	DOC	ANGUS6S
11	0.6	61	103	94	1.36	19	

TEX Playbook 5437  
**Gnerer Play Book 0118**  
Gnerer Teaka 435

Basin Payweight 1682  
Rita 1C43 of 9M26 Complete  
V D A R Cedar Wind 8111  
Gnerer Teaka 20

Gnerer Clarence 972  
**Gnerer Black Prize 247**  
Gnerer Miss Clare 809

V D A R Clarence 2285  
Gnerer Marian Corners 72  
V D A R Clarence 2285  
Gnerer Tressa Wind 66

BW WT
75
205 WT
672
DAM
PROD.
2@103

MILK	FL	CW	MARB	RE	SEN	SM	SF	SB
29	1.11	30	0.58	0.2	4	86	62	107

**Thank you  
for being apart of the 2026 Sale!**



SCAN TO GO  
TO OUR WEBSITE

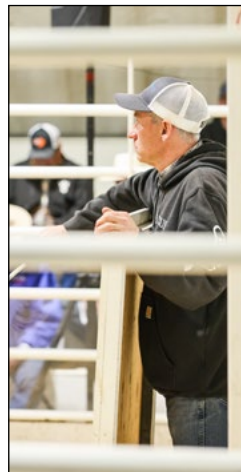
# GENERER ANGUS



*We sincerely thank you for your business and friendship!*



**PRODUCING QUALITY BULLS BY FOCUSING ON A SUPERIOR COW**





**Sometimes *later* becomes *never*, so do it now!**



8 of the 13 Gnerer siblings.  
Chris, Greg, Mary, Joe, Brenda, Mark, Julie,  
and Steve  
Mama Maureen in front!



Silas & Harlan ready to go to work!



Team work makes the dream work!  
Steve and Ilá's kiddos - Gavin and Mia




Morgan & Kaleb on bull-scratching duty!



Joe and the best hand Jay!

# GNERER ANGUS

10 Ash Creek Road  
Olive, MT 59343

Find us on 

Join us on Saturday  
**MARCH 21, 2026**  
1pm (MST)



SCAN TO GO  
TO OUR WEBSITE

*Visit us online*

**[www.GnererAngus.com](http://www.GnererAngus.com)**

