

PERFORMANCE ON THE PRAIRIE ANNUAL SALE

# GIBBS ANGUS RANCH

**FRIDAY, APRIL 24, 2026**

1PM MST • Glendive Livestock Exchange, Glendive, MT

*Selling 70  
Yearling  
Angus Bulls*

Selling Sons of:

- Deer Valley Growth Fund
- Connealy Guard Rail
- EZAR Step-Up
- Kenny Institution & more!

*Many bulls available will  
be suitable for heifers*

**GIBBS ANGUS RANCH | Tim and Laurie Gibbs**

738 ROAD 130 • FALLON, MT 59326

Tim Gibbs 406-939-1084 | Megan Kubesh 406-939-1006

# PERFORMANCE ON THE PRAIRIE ANNUAL SALE

# GIBBS ANGUS RANCH

**Greetings and welcome to the Gibbs families annual "Performance on the Prairie" bull sale!**  
This year we will be offering 70 yearling Angus bulls.

What an exciting time to be involved in the cattle industry!! With the smallest cow herd on record and record breaking cattle sales all around, it is an exciting moment in history for all of us to be a part of. Our goal is to help you be successful by bringing you an outstanding set of yearling bulls.

Our sale offering this year will include bulls sired by: Connealy Guard Rail EZAR Step- Up, Deer Valley Growth Fund, SAV Rainfall, Square B True North, Basin True Grit and and our own Registered Angus Sires. Once again, will will be offering Purebred Angus bulls; we are always pleased with how they perform right alongside their counterparts. They are definitely not imposters but valuable assets to our ranch and the Angus breed. Along with our registered herd, our commercial herd is a very integral part of our operation. They are a reliable set of mothers, with good disposition, they are moderately framed, have good maternal instincts, and put healthy calves in the feedlot for us come weaning time.

We still continue to raise our own herd sires; this gives us the ability to monitor how they perform in our- and your- environment.

We continue to focus on improving genetics in our herd- both from the maternal and paternal side. Every cow on our operation is 'graded' every year- for her udder quality, foot soundness, and her disposition. We do all that we can to have a low maintenance cow herd that can be cared for with a small crew. We also strive to have mother cows that have good maternal instinct, raise a healthy calf, and put pounds in the feedlot come fall.

All of the bulls are born, raised and developed at the ranch. We are a family operation- all of the cattle are handled by us from calving- to weaning- to feeding/growing- and right up to the sale. The bulls will be fertility tested BEFORE the sale. Performance records and final weights will be available sale day. Please note final weights and scrotals are ACTUAL and not adjusted. We are offering 50\$ off per bull purchased if you take your bull(s) home sale day. Otherwise, we plan to start delivering bulls the day after the sale.

If you would like to purchase a bull but are unable to make it to the sale, please contact either one of the sales reps (listed below), Tim, Megan, or Glendive Livestock Exchange, to place your bid. We offer a sight unseen guarantee on the bulls purchased in this manner. Please contact us if you have any questions or would like any photos or videos of the bulls.

We would like to close by letting you know how much we appreciate each and every single one of our customers, new and old. Our operation could not be successful without you. God has truly blessed us, by allowing us to be stewards of His creation, but most importantly- in our relationships- not only through our bull customers, but through their families and others involved in production agriculture as well! As we look to the future, we are excited for what is ahead, while we focus on what is in front of us.

We look forward to seeing you on sale day- April 24, 2026 at 1pm!

*Gibbs Angus Ranch  
Tim & Laurie Gibbs & family*

**GIBBS ANGUS RANCH | Tim and Laurie Gibbs**

738 ROAD 130 • FALLON, MT 59326

Tim Gibbs 406-939-1084 | Megan Kubesh 406-939-1006

## LUNCH AT 11:30AM

Not responsible for accidents

## SALE DAY PHONE

(406) 377-2697 or 1-888-405-2333

**AUCTIONEER** Scott Weishaar (701) 426-6826

## SALE REPRESENTATIVES

Chad Stoltz (701) 290-0546

Kent Granmoe (406) 989-1366

# TERMS AND CONDITIONS

- Cash or check, unless otherwise arranged before the sale.
- The auctioneer has complete charge of the sale, any dispute in the bidding shall be settled by the auctioneer, his decision will be final.
- Any announcements made from the auction block take precedence over any printed matter.
- Performance records and final weights will be available on sale date. All bulls will be fertility tested prior to the sale. We will once again offer \$50/head to haul your purchased bulls home or we offer free delivery after the sale.
- All cattle sell under terms and conditions of the American Angus Association. Gibbs Angus will retain 1/2 semen interest in the bulls. We also retain 1/2 interest in any revenue generated from certificates sold on these bulls. The buyer retains full possession and salvage value of their purchased bulls. Papers will be transferred free of charge, on the bulls that are registered if the transfer is requested on sale day.
- If any problems should arise with your bull please contact us as soon as possible or no later than September 1, 2026.

# ANGUS SELECTION TOOLS

**EXPECTED PROGENY DIFFERENCE (EPD):** is the prediction of how future progeny of each animal are expected to perform relative to the progeny of other animals listed in the database. EPDs are expressed in units of measure for the trait, plus or minus. Interim EPDs may appear on young animals when their performance has yet to be incorporated into the American Angus Association National Cattle Evaluation (NCE) procedures. This EPD will be preceded by an "I" and may or may not include the animal's own performance record for a particular trait, depending on its availability, appropriate contemporary grouping, or data edits needed for NCE.

---

## Breed Average EPD:

CED +6 • BW +1.3 • WW +66 • YW +117 • Milk +26 • RE +.65 • \$W +63 • \$B +149

---

**Birth Weight EPD (BW):** expressed in pounds, is a predictor of a sire's ability to transmit birth weight to his progeny compared to that of other sires.

**Weaning Weight EPD (WW):** expressed in pounds, is a predictor of a sire's ability to transmit weaning growth to his progeny compared to that of other sires.

**Yearling Weight EPD (YW):** expressed in pounds, is a predictor of a sire's ability to transmit yearling growth to his progeny compared to that of other sires.

**Calving Ease Direct (CED):** expressed as a difference in percentage of unassisted births, with a higher value indicating greater calving ease in first-calf heifers. It predicts the average difference in ease with which a sire's calves will be born when he is bred to first-calf heifers.

**Maternal Milk EPD (Milk):** is a predictor of a sire's genetic merit for milk and mothering ability as expressed in his daughters compared to daughters of other sires. In other words, it is that part of a calf's weaning weight attributed to milk and mothering ability.

**Marbling EPD (Marb):** expressed as a fraction of the difference in USDA marbling score of a sire's progeny compared to progeny of other sires.

**Ribeye Area EPD (RE):** expressed in square inches, is a predictor of the difference in ribeye area of a sire's progeny compared to progeny of other sires.

**Weaned Calf Value (\$W):** An index value expressed in dollars per head, is the expected average difference in future progeny performance for preweaning merit. \$W includes both revenue and cost adjustment associated with differences in birth weight, weaning direct growth, maternal milk and mature cow size.

**Beef Value (\$B):** An index value expressed in dollars per head, is the expected average difference in future progeny performance for postweaning and carcass value compared to progeny of other sires.

**WWW.ANGUS.ORG**

# CONNEALY GUARD RAIL 923E

REG.#: AAA 19829215 BIRTH DATE: 11/06/2019  
 BIRTH WT: 60 ADJ. 205 WT: 632 ADJ. 365 WT: 1187

Tehama Tahoe B767 { Tehama Upward Y238  
 Tehama Mary Blackbird Y684  
 Queen Babes of Conanga 870J { Connealy Legendary 644L  
 Queen Barb of Conanga 60C



- An excellent choice for commercial heifer projects where moderate framed, maternal, and efficient replacement females are the goal
- Reliable calving ease, cow-maker type and kind
- Ranks well for fertility and feet in the Angus breed

EPDS	CED	B.W.	W.W.	MILK	Y.W.
	+13	-2.8	+60	+30	+105
C.W.	MARB.	REA	FAT	\$W	\$B
	+43	+79	+47	+0.13	+73

# EZAR STEP UP 9178

REG.#: AAA 19430597 BIRTH DATE: 01/29/2019  
 BIRTH WT: 95 ADJ. 205 WT: 786 ADJ. 365 WT: 1244

G A R Big Step K715 { G A R Sure Fire  
 Chair Rock Prophet 3131  
 Basin Lucy 4261 { EXAR Denver 2002B  
 Basin Lucy 1022



- Good structured, wide based and deep bodied; extra width of top and muscle expression
- Step Up sires stout made eye appealing cattle while adding good foot quality

EPDS	CED	B.W.	W.W.	MILK	Y.W.
	+3	+2.3	+69	+28	+129
C.W.	MARB.	REA	FAT	\$W	\$B
	+52	+1.38	+92	+0.060	+62

# DEER VALLEY GROWTH FUND

REG.#: AAA 18827828 BIRTH DATE: 01/22/2017  
 BIRTH WT: 70 ADJ. 205 WT: 946 ADJ. 365 WT: 1360

Basin Payweight 1682 { Basin Payweight 006S  
 21AR O Lass 7017  
 Deer Valley Rita 36113 { Plattermere Weigh Up K360  
 Deer Valley Rita 9457



- This bull was the #1 sire for registrations in the Angus breed in 2023.
- One of the elite growth sires in the breed, ranking in the top 2% for WW and YW EPD

EPDS	CED	B.W.	W.W.	MILK	Y.W.
	+9	+1.4	+91	+25	+167
C.W.	MARB.	REA	FAT	\$W	\$B
	+78	+46	+69	+0.051	+100



The bulls received Nuplura PH+5 and Vision 7 at branding. They received Nasalgen, Somubac, I-SITE, Ivomec, Nuplura PH+5 and Vision 7 w/ Somnus as their fall vaccinations. Winter shots received Clean-up and Wart.

# SQUARE B TRUE NORTH 8052

REG.#: AAA 19405246 BIRTH DATE: 08/16/2018  
 BIRTH WT: 89 ADJ. 205 WT: 741 ADJ. 365 WT: 1199

S A V Rainfall 6846

{ Coleman Charlo 0256  
 { S A V Blackcap May 4136

Elbanna of Conanga 1209

{ Connealy Consensus  
 { Elbasta of Conanga 9703



- Emerging as a go-to sire for delivering highly desirable females with outstanding females.
- Daughters are thick, big bodied and easy fleshing.
- Offers one of the most versatile and broadly appealing maternal packages.

EPDs	CED	B.W.	W.W.	MILK	Y.W.
	+13	-2.2	+56	+33	+104
	C.W.	MARB.	REA	FAT	\$W
+29	+1.13	+0.71	+0.052	+81	+158

# BASIN TRUE GRIT 1021

REG.#: AAA 20072762 BIRTH DATE: 01/11/2021  
 BIRTH WT: 70 ADJ. 205 WT: 703 ADJ. 365 WT: 1188

Square B True North 8052

{ S A V Rainfall 6846  
 { Elbanna of Conanga 1209

Basin Camilla 9044

{ Basin Rainmaker 4404  
 { Basin Camilla 7026



- Designed to deliver outstanding calving ease and maternal value.
- Will produce daughters who are attractive patterned, big bodied, and easy fleshing

EPDs	CED	B.W.	W.W.	MILK	Y.W.
	+11	-2.0	+68	+30	+120
	C.W.	MARB.	REA	FAT	\$W
+56	+1.33	+1.09	+0.071	+76	+201

# SAV RAINFALL 6846

REG.#: AAA 18578963 BIRTH DATE: 01/09/2016  
 BIRTH WT: 79 ADJ. 205 WT: 963 ADJ. 365 WT: 1550

Coleman Charlo 0256

{ O C C Paxton 730P  
 { Bohi Abigale 6014

S A V Blackcap May 4136

{ S A V 8180 Traveler 004  
 { S A V May 2397



- Sets himself apart with his dominating hip and rear leg structure with muscle shape and flawless phenotype.
- He sires added length, soundness and unmistakable herd bull presence in his sons.
- His daughters are stunning in an elegant maternal package.

EPDs	CED	B.W.	W.W.	MILK	Y.W.
	+7	+5	+57	+24	+109
	C.W.	MARB.	REA	FAT	\$W
+29	+0.77	+0.67	+0.004	+64	+141



REFERENCE SIRE

# ANGUS BULLS

Lot 1

## GIBBS STEP UP N38

REG.#: 21531525

BIRTH DATE: 03/23/2025 TATTOO: N38 BIRTH WT: 78 ADJ. 205 WT: 733

EZAR Step Up 9178 { G A R Big Step K715 { G A R Sure Fire  
Chair Rock Prophet 3131  
Basin Lucy 4261 { EXAR Denver 2002B  
Basin Lucy 1022  
Basin Rainmaker 4404 { Basin Rainmaker 2704  
Basin Joy 1036  
Gibbs Luna 38 { Gibbs Luna 997 { TC Franklin 619  
Gibbs Layla 645

EPDS	CED	B.W.	W.W.	Y.W.	MILK	MARB.	R.E.	\$W	\$B
	+11	-1.1	+54	+102	+37	+1.19	+92	+62	+165

Lot 2

## GIBBS GROWTH FUND N469

REG.#: 21511382

BIRTH DATE: 03/24/2025 TATTOO: N469 BIRTH WT: 78 ADJ. 205 WT: 676

Deer Valley Growth Fund { Basin Payweight 1682 { Basin Payweight 006S  
21AR O Lass 7017  
Deer Valley Rita 36113 { Plattermere Weigh Up K360  
Deer Valley Rita 9457  
G A R Ashland  
Gibbs Lady Day 469 { G A R Home Town { Chair Rock Sure Fire 6095  
Mohnen Long Haul 502  
Gibbs Pioneer Lady 1458

EPDS	CED	B.W.	W.W.	Y.W.	MILK	MARB.	R.E.	\$W	\$B
	+10	+1.5	+74	+131	+24	+59	+1.05	+71	+153

Lot 3

## GIBBS KEYSTONE N883

REG.#: 21511358

BIRTH DATE: 03/04/2025 TATTOO: N883 BIRTH WT: 72 ADJ. 205 WT: 721

Basin Keystone 2021 { EZAR Step Up 9178 { G A R Big Step K715  
Basin Lucy 4261  
Basin Joy 9140 { EXAR Monumental 6056B  
Basin Joy 5367  
S A V Rainfall 6846 { Coleman Charlo 0256  
S A V Blackcap May 4136  
Gibbs Lex 883 { Gibbs Sarah 2221 { K C F Bennett Absolute  
Gibbs Sarah 1700

EPDS	CED	B.W.	W.W.	Y.W.	MILK	MARB.	R.E.	\$W	\$B
	+2	+2.3	+78	+138	+26	+1.16	+1.01	+74	+178

Lot 4

## GIBBS CRAFTSMAN N2583

REG.#: 21511409

BIRTH DATE: 03/26/2025 TATTOO: N2583 BIRTH WT: 74 ADJ. 205 WT: 701

Connealy Craftsman { Sitz Resilient 10208 { Sitz Stellar 726D  
Sitz Miss Burgess 1856  
Black Cathy of Conanga 8521 { Connealy Niobrara 5451  
Black Carla of Conanga 450  
Jindra Acclaim { Jindra 3rd Dimension  
Jindra Blackbird Lassy 1111  
Gibbs Duchess 2583 { Gibbs Duchess 741 { Mytty In Focus  
Gibbs Lady 494

EPDS	CED	B.W.	W.W.	Y.W.	MILK	MARB.	R.E.	\$W	\$B
	+11	-1.2	+58	+110	+34	+1.10	+48	+70	+147

Lot 5

## GIBBS STEP UP N198

REG.#: 21536303

BIRTH DATE: 03/17/2025 TATTOO: N198 BIRTH WT: 80 ADJ. 205 WT: 733

EZAR Step Up 9178 { G A R Big Step K715 { G A R Sure Fire  
Chair Rock Prophet 3131  
Basin Lucy 4261 { EXAR Denver 2002B  
Basin Lucy 1022  
BUBS Southern Charm AA31 { Silveiras Conversion 8064  
Hickory Hill Erica 009  
V A R Discovery 2240  
Gibbs Camille 198 { Gibbs Camille 1851 { Gibbs Cam 1030

EPDS	CED	B.W.	W.W.	Y.W.	MILK	MARB.	R.E.	\$W	\$B
	+6	+2.3	+74	+131	+28	+93	+1.02	+65	+182

Lot 6

## GIBBS GROWTH FUND N2400

REG.#: 21511383

BIRTH DATE: 03/23/2025 TATTOO: N2400 BIRTH WT: 86 ADJ. 205 WT: 738

Deer Valley Growth Fund { Basin Payweight 1682 { Basin Payweight 006S  
21AR O Lass 7017  
Deer Valley Rita 36113 { Plattermere Weigh Up K360  
Deer Valley Rita 9457  
Vision Unanimous 1418  
S Foundation 514 { S Lady Ann 8384  
B C Matrix 4132  
Gibbs22U { Gibbs Miss Focus 526

EPDS	CED	B.W.	W.W.	Y.W.	MILK	MARB.	R.E.	\$W	\$B
	+7	+1.3	+84	+151	+33	+73	+93	+91	+180

Lot 7

## GIBBS TRUE GRIT N2403

REG.#: 21511475

BIRTH DATE: 03/14/2025 TATTOO: N2403 BIRTH WT: 84 ADJ. 205 WT: 726

Basin True Grit 1021 { Square B True North 8052 { S A V Rainfall 6846  
Elbanna of Conanga 1209  
Basin Camilla 9044 { Basin Rainmaker 4404  
Basin Camilla 7026  
GDAR Leupold 298 { A A R Leupold 0578  
GDAR Miss Blackcap 9232  
Woodhill Foresight  
Gibbs Perfect 2403 { Gibbs 781 { Gibbs Bessy 516R

EPDS	CED	B.W.	W.W.	Y.W.	MILK	MARB.	R.E.	\$W	\$B
	+6	+7	+80	+143	+26	+1.08	+54	+81	+194



ALL BULLS HAVE BEEN VERIFIED

# ANGUS BULLS



## GIBBS STEP UP N2546

REG.#: 21511365

BIRTH DATE: 03/25/2025 TATTOO: N2546 BIRTH WT: 81 ADJ. 205 WT: 698

EZAR Step Up 9178

{ G A R Big Step K715  
{ Basin Lucy 4261

Gibbs Elaine 2546

{ BUBS Southern Charm AA31  
{ Gibbs Elaine 856

{ G A R Sure Fire  
{ Chair Rock Prophet 3131  
{ EXAR Denver 2002B  
{ Basin Lucy 1022  
{ Silveiras Conversion 8064  
{ Hickory Hill Erica 009  
{ Connealy Lead On  
{ Gibbs Elaine 530

EPDS	CED	B.W.	W.W.	Y.W.	MILK	MARB.	R.E.	\$W	\$B
	+2	+2.1	+71	+123	+34	+1.36	+81	+78	+177



## GIBBS TRUE GRIT N758

REG.#: 21542514

BIRTH DATE: 02/25/2025 TATTOO: N758 BIRTH WT: 78 ADJ. 205 WT: 732

Basin True Grit 1021

{ Square B True North 8052  
{ Basin Camilla 9044

Gibbs Madame 758

{ SITZ Incentive 704H  
{ Gibbs Madame 288

{ S A V Rainfall 6846  
{ Elbanna of Conanga 1209  
{ Basin Rainmaker 4404  
{ Basin Camilla 7026  
{ Sitz Stellar 726D  
{ SITZ Barbaramere Nell 53F  
{ Heiken Broadview  
{ Gibbs Madame 2572

EPDS	CED	B.W.	W.W.	Y.W.	MILK	MARB.	R.E.	\$W	\$B
	-	-	-	-	-	-	-	-	-



## GIBBS KEYSTONE N838

REG.#: 21511357

BIRTH DATE: 03/09/2025 TATTOO: N838 BIRTH WT: 83 ADJ. 205 WT: 717

Basin Keystone 2021

{ EZAR Step Up 9178  
{ Basin Joy 9140

Gibbs Nin 838

{ S A V Rainfall 6846  
{ Gibbs Nan 2165

{ G A R Big Step K715  
{ Basin Lucy 4261  
{ EXAR Monumental 6056B  
{ Basin Joy 5367  
{ Coleman Charlo 0256  
{ S A V Blackcap May 4136  
{ K C F Bennett Absolute  
{ Gibbs Nan 1785

EPDS	CED	B.W.	W.W.	Y.W.	MILK	MARB.	R.E.	\$W	\$B
	+6	+1.3	+67	+132	+34	+1.32	+75	+70	+207



## GIBBS GROWTH FUND N101

REG.#: 21526232

BIRTH DATE: 03/18/2025 TATTOO: N101 BIRTH WT: 85 ADJ. 205 WT: 692

Deer Valley Growth Fund

{ Basin Payweight 1682  
{ Deer Valley Rita 36113

Gibbs Tally 101

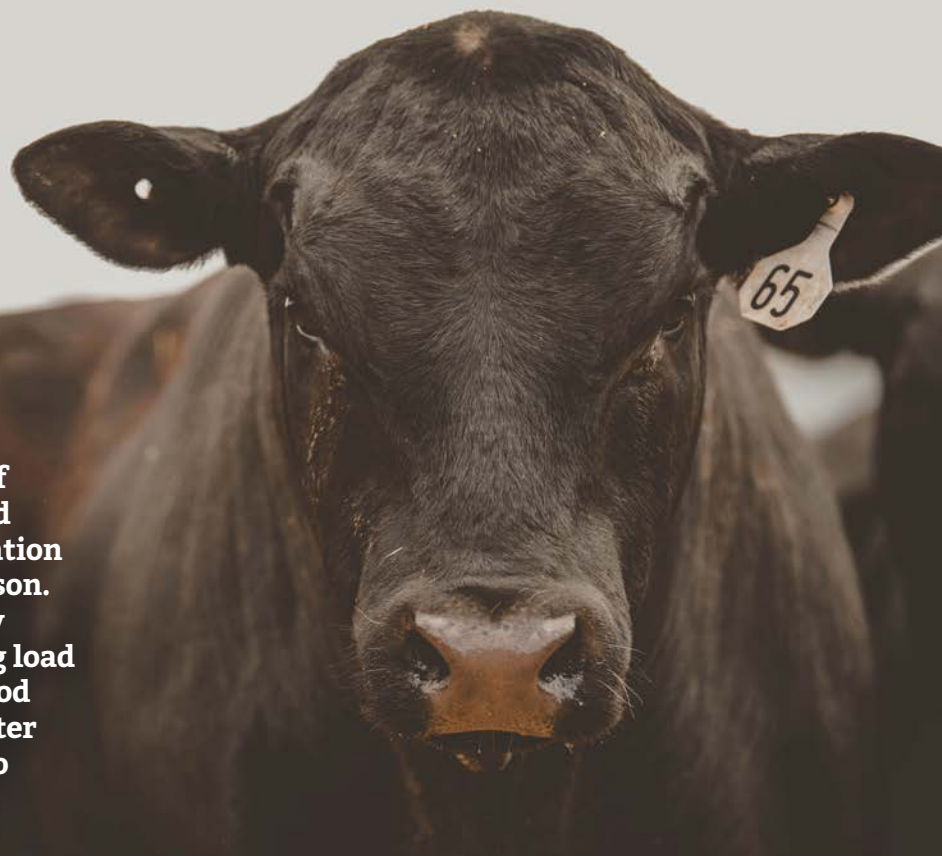
{ Gibbs Trust A998  
{ Gibbs 1158

{ Basin Payweight 006S  
{ 21AR O Lass 7017  
{ Plattermere Weigh Up K360  
{ Deer Valley Rita 9457  
{ SydGen Trust 6228  
{ Gibbs Miss TH 998  
{ GibbsFocus319T  
{ Gibbs 482

EPDS	CED	B.W.	W.W.	Y.W.	MILK	MARB.	R.E.	\$W	\$B
	+7	+1.3	+81	+141	+32	+1.1	+98	+85	+118

*Caring  
for your  
new bull*

Remember, these bulls are yearlings and still have a lot of growing to do. It may be a good idea to feed them a growing ration until the start of breeding season. We recommend about a 60 day breeding season with a mating load of around 20 females. It's a good idea to supplement the bull after breeding season for 60 days, to prepare him for winter.



# ANGUS BULLS



**Lot 12** **GIBBS GROWTH FUND N1469** REG.#: 21511385  
 BIRTH DATE: 03/20/2025 TATTOO: N1469 BIRTH WT: 83 ADJ. 205 WT: 768

Deer Valley Growth Fund { Basin Payweight 1682  
 Deer Valley Rita 36113

Gibbs Miss 1469 { Mohnen Substantial 272  
 Gibbs Miss 1090

{ Basin Payweight 006S  
 21AR O Lass 7017  
 Plattemere Weigh Up K360  
 Deer Valley Rita 9457  
 Benfield Substance 8506  
 Mohnen Glyn Mawr Elba 1758  
 S A V Bismarck 5682  
 Gibbs Miss 677

EPDS	CED	B.W.	W.W.	Y.W.	MILK	MARB.	R.E.	\$W	\$B
	+7	+1.8	+84	+137	+20	+65	+65	+79	+143

**Lot 13** **GIBBS RAINFALL N160** REG.#: 21534767  
 BIRTH DATE: 03/23/2025 TATTOO: N160 BIRTH WT: 88 ADJ. 205 WT: 703

S A V Rainfall 6846 { Coleman Charlo 0256  
 S A V Blackcap May 4136

Gibbs Lady Lass 160 { Gibbs Absolute E1777  
 Gibbs Lady Lass 2142

{ O C C Paxton 730P  
 Bohi Abigale 6014  
 S A V 8180 Traveler 004  
 S A V May 2397  
 K C F Bennett Absolute  
 Gibbs Miss Maddy 1777  
 Gibbs Aberdeen 692  
 Gibbs 917

EPDS	CED	B.W.	W.W.	Y.W.	MILK	MARB.	R.E.	\$W	\$B
	+5	+2.9	+72	+128	+33	+56	+96	+76	+156

**Lot 14** **GIBBS GUARD RAIL N863** REG.#: 21531579  
 BIRTH DATE: 03/04/2025 TATTOO: N863 BIRTH WT: 76 ADJ. 205 WT: 665

Connealy Guard Rail 923E { Tehama Tahoe B767  
 Queen Babes of Conanga 870J

Gibbs Jean 863 { B A R Dynamic  
 Gibbs Jean 441

{ Tehama Upward Y238  
 Tehama Mary Blackbird Y684  
 Connealy Legendary 644L  
 Queen Barb of Conanga 60C  
 Deer Valley Growth Fund  
 B A R Blackcap 7235-B0048  
 Basin Rainmaker 4404  
 Gibbs Jean 1900

EPDS	CED	B.W.	W.W.	Y.W.	MILK	MARB.	R.E.	\$W	\$B
	+8	+0	+79	+141	+23	+87	+69	+74	+165

**Lot 15** **GIBBS STEP UP N470** REG.#: 21511364  
 BIRTH DATE: 03/28/2025 TATTOO: N470 BIRTH WT: 90 ADJ. 205 WT: 751

EZAR Step Up 9178 { G A R Big Step K715  
 Basin Lucy 4261

Gibbs Susan 470 { Paintrock Trapper  
 Gibbs Sarah 1700

{ G A R Sure Fire  
 Chair Rock Prophet 3131  
 EXAR Denver 2002B  
 Basin Lucy 1022  
 Paintrock Mountain Man  
 Emulous of Paintrock 93-9  
 Gibbs Extravagant Y752  
 Gibbs Pine 1035

EPDS	CED	B.W.	W.W.	Y.W.	MILK	MARB.	R.E.	\$W	\$B
	-3	+3.7	+88	+143	+28	+71	+67	+85	+156

**Lot 16** **GIBBS STEP UP N2394** REG.#: 21511368  
 BIRTH DATE: 03/20/2025 TATTOO: N2394 BIRTH WT: 89 ADJ. 205 WT: 775

EZAR Step Up 9178 { G A R Big Step K715  
 Basin Lucy 4261

Gibbs Raine 2394 { EF Commando 1366  
 Gibbs Raine 1896

{ G A R Sure Fire  
 Chair Rock Prophet 3131  
 EXAR Denver 2002B  
 Basin Lucy 1022  
 EF Complement 8088  
 Riverbend Young Lucy W1470  
 Gibbs Rainmaker A888  
 Gibbs Annie 1347

EPDS	CED	B.W.	W.W.	Y.W.	MILK	MARB.	R.E.	\$W	\$B
	+0	+2.6	+66	+118	+29	+83	+1.06	+67	+157

**Lot 17** **GIBBS TRUE GRIT N2595** REG.#: 21511470  
 BIRTH DATE: 03/16/2025 TATTOO: N2595 BIRTH WT: 89 ADJ. 205 WT: 668

Basin True Grit 1021 { Square B True North 8052  
 Basin Camilla 9044

Gibbs Happy 2595 { Connealy Comrade 1385  
 Gibbs 1028

{ S A V Rainfall 6846  
 Elbanna of Conanga 1209  
 Basin Rainmaker 4404  
 Basin Camilla 7026  
 Connealy Consensus 7229  
 Happy Gee of Conanga 919  
 Gibbs Traveler 47U  
 Gibbs Kass 525

EPDS	CED	B.W.	W.W.	Y.W.	MILK	MARB.	R.E.	\$W	\$B
	+4	+7	+70	+115	+27	+72	+1.10	+75	+173

**Lot 18** **GIBBS GROWTH FUND N53** REG.#: 21511380  
 BIRTH DATE: 03/21/2025 TATTOO: N53 BIRTH WT: 90 ADJ. 205 WT: 768

Deer Valley Growth Fund { Basin Payweight 1682  
 Deer Valley Rita 36113

Gibbs Bam 53 { BUBS Southern Charm AA31  
 Gibbs Sarah 1700

{ Basin Payweight 006S  
 21AR O Lass 7017  
 Plattemere Weigh Up K360  
 Deer Valley Rita 9457  
 Silveiras Conversion 8064  
 Hickory Hill Erica 009  
 Gibbs Extravagant Y752  
 Gibbs Pine 1035

EPDS	CED	B.W.	W.W.	Y.W.	MILK	MARB.	R.E.	\$W	\$B
	-1	+2.4	+93	+164	+25	+64	+1.13	+83	+198

# ANGUS BULLS

**Lot 19** **GIBBS GROWTH FUND N1048** REG.#: 21508833  
 BIRTH DATE: 03/21/2025 TATTOO: N1048 BIRTH WT: 84 ADJ. 205 WT: 735

Deer Valley Growth Fund { Basin Payweight 1682  
 Deer Valley Rita 36113

Gibbs Rae 1048 { S A V Bismarck 5682  
 Gibbs Rae 718

{ Basin Payweight 006S  
 21AR O Lass 7017  
 Plattemere Weigh Up K360  
 Deer Valley Rita 9457  
 G A R Grid Maker  
 S A V Abigale 0451  
 Gibbs Density 53S  
 Gibbs Rose 142R

EPDS	CED	B.W.	W.W.	Y.W.	MILK	MARB.	R.E.	\$W	\$B
	+5	+9	+80	+134	+34	+43	+58	+89	+142

**Lot 20** **GIBBS GROWTH FUND N1919** REG.#: 21508835  
 BIRTH DATE: 04/15/2025 TATTOO: N1919 BIRTH WT: 90 ADJ. 205 WT: 758

Gibbs Growth Fund L1026 { Deer Valley Growth Fund  
 Gibbs 1026

Gibbs Blackie 1919 { Connealy Black Granite  
 Gibbs Dayla 1434

{ Basin Payweight 1682  
 Deer Valley Rita 36113  
 Sitz Madison 10477  
 Gibbs Gram 114  
 Connealy Consensus 7229  
 Eura Elga of Conanga 9109  
 Gibbs Pioneer Z705  
 Gibbs Dez 990

EPDS	CED	B.W.	W.W.	Y.W.	MILK	MARB.	R.E.	\$W	\$B
	+6	+2.4	+75	+129	+28	+65	+51	+75	+170

**Lot 21** **GIBBS GROWTH FUND N670** REG.#: 21508841  
 BIRTH DATE: 03/23/2025 TATTOO: N670 BIRTH WT: 85 ADJ. 205 WT: 780

Gibbs Growth Fund L1026 { Deer Valley Growth Fund  
 Gibbs 1026

Gibbs Miss Ten 670 { S A V Rainfall 6846  
 Gibbs Miss Ten 1600

{ Basin Payweight 1682  
 Deer Valley Rita 36113  
 Sitz Madison 10477  
 Gibbs Gram 114  
 Coleman Charlo 0256  
 S A V Blackcap May 4136  
 A A R Ten X 7008 S A  
 Gibbs Nan 1119

EPDS	CED	B.W.	W.W.	Y.W.	MILK	MARB.	R.E.	\$W	\$B
	+0	+4.1	+79	+134	+26	+38	+34	+62	+131

**Lot 22** **GIBBS GUARD RAIL N918** PUREBRED ANGUS  
 BIRTH DATE: 03/04/2025 TATTOO: N918 BIRTH WT: 73 ADJ. 205 WT: 730

Connealy Guard Rail 923E { Tehama Tahoe B767  
 Queen Babes Conanga 870J

Gibbs 918 { B A R Dynamic  
 Gibbs 262

{ Tehama Upward Y238  
 Tehama Blackbird Y684  
 Connealy Legendary 644L  
 Queen Barb of Conanga 60C  
 Deer Valley Growth Fund  
 B A R Blackcap 7235-B0048  
 Gibbs G817  
 Gibbs 785



**Lot 23** **GIBBS GUARD RAIL N743** PUREBRED ANGUS  
 BIRTH DATE: 02/20/2025 TATTOO: N743 BIRTH WT: 80 ADJ. 205 WT: 724

Connealy Guard Rail 923E { Tehama Tahoe B767  
 Queen Babes Conanga 870J

Gibbs 743 { Gibbs Justified J2582  
 Gibbs 446

{ Tehama Upward Y238  
 Tehama Blackbird Y684  
 Connealy Legendary 644L  
 Queen Barb of Conanga 60C  
 KG Justified 3023  
 Gibbs Jules 2582  
 Gibbs Southern Charm G1036  
 Gibbs 2094



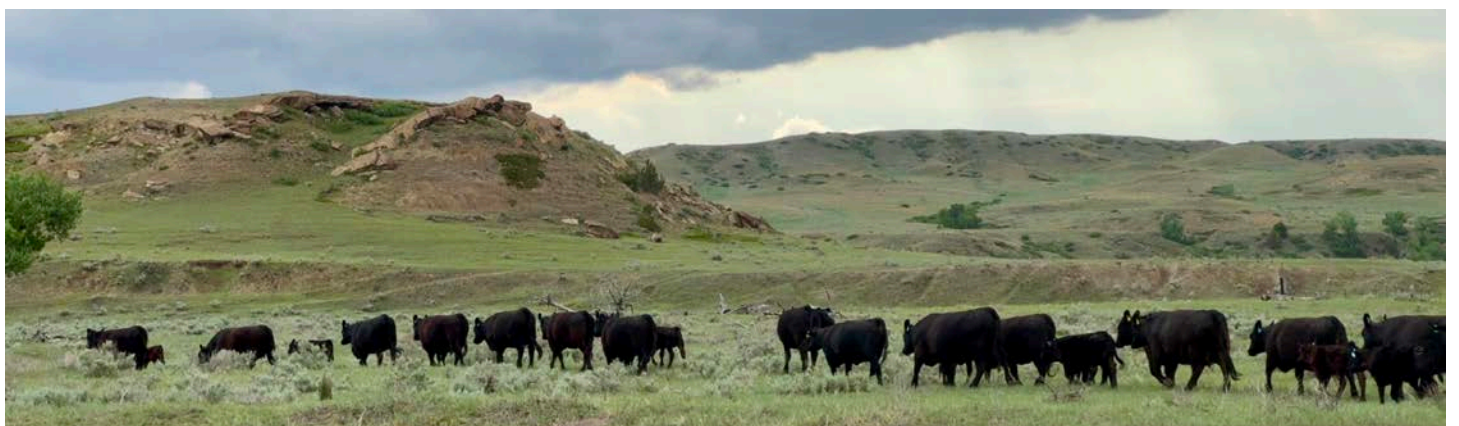
**Lot 24** **GIBBS KEYSTONE N2496** REG.#: 21511351  
 BIRTH DATE: 03/14/2025 TATTOO: N2496 BIRTH WT: 80 ADJ. 205 WT: 697

Basin Keystone 2021 { EZAR Step Up 9178  
 Basin Joy 9140

Gibbs Emma 2496 { Connealy Comrade 1385  
 Gibbs Emma 1485

{ G A R Big Step K715  
 Basin Lucy 4261  
 EXAR Monumental 6056B  
 Basin Joy 5367  
 Connealy Consensus 7229  
 Happy Gee of Conanga 919  
 Gibbs Madison Y358  
 Gibbs Elaine 530

EPDS	CED	B.W.	W.W.	Y.W.	MILK	MARB.	R.E.	\$W	\$B
	+7	+8	+79	+139	+20	+86	+83	+75	+174



# ANGUS BULLS

Lot 25

## GIBBS KEYSTONE N811

REG.#: 21511353

BIRTH DATE: 03/01/2025 TATTOO: N811 BIRTH WT: 78 ADJ. 205 WT: 698

- Basin Keystone 2021 { EZAR Step Up 9178 { G A R Big Step K715
- Basin Joy 9140 { Basin Lucy 4261
- S A V Rainfall 6846 { EXAR Monumental 6056B
- Gibbs Heart 811 { Basin Joy 5367
- { Coleman Charlo 0256
- { S A V Blackcap May 4136
- { Gibbs Miss Blackheart 1920 { Gibbs Bextor X549
- { Gibbs 832

EPDS	CED	B.W.	W.W.	Y.W.	MILK	MARB.	R.E.	\$W	\$B
	-3	+3.9	+74	+129	+31	+97	+1.18	+72	+176

Lot 26

## GIBBS TRUE NORTH N92

PUREBRED ANGUS

BIRTH DATE: 03/20/2025 TATTOO: N92 BIRTH WT: 79 ADJ. 205 WT: 701

- Square B True North 8052 { S A V Rainfall 6846 { Coleman Charlo 0256
- { Elbana of Conanga 1209 { S A V Blackcap May 4136
- Gibbs 92 { Sitz Alpine 11076 { Connealy Consensus
- { Gibbs 2354 { KM Broken Bow 002
- { Gibbs 1504 { Sitz Ellunas Elite 1874
- { Gibbs D882
- { Gibbs 1504

EPDS	CED	B.W.	W.W.	Y.W.	MILK	MARB.	R.E.	\$W	\$B
	-3	+3.9	+74	+129	+31	+97	+1.18	+72	+176

Lot 27

## GIBBS TRUE NORTH N837

PUREBRED ANGUS

BIRTH DATE: 03/01/2025 TATTOO: N837 BIRTH WT: 75 ADJ. 205 WT: 748

- Square B True North 8052 { S A V Rainfall 6846 { Coleman Charlo 0256
- { Elbana of Conanga 1209 { S A V Blackcap May 4136
- Gibbs 837 { Gibbs Enhance H2245 { Connealy Consensus
- { Gibbs 173 { Elbasta of Conanga 9703
- { SydGend Enhance
- { Gibbs Traveler 2245
- { Gibbs C832
- { Gibbs 1552

EPDS	CED	B.W.	W.W.	Y.W.	MILK	MARB.	R.E.	\$W	\$B
	-4	+3.5	+70	+129	+30	+37	+78	+62	+146

Lot 28

## GIBBS RAINFALL N337

REG.#: 21508842

BIRTH DATE: 03/26/2025 TATTOO: N337 BIRTH WT: 86 ADJ. 205 WT: 741

- Gibbs Rainfall J2134 { S A V Rainfall 6846 { Coleman Charlo 0256
- { Gibbs 2134 { S A V Blackcap May 4136
- Gibbs Midnite 337 { Gibbs Black Granite D1494 { Gibbs Rainmaker A888
- { Gibbs Midnite 2322 { Gibbs Opal 1494
- { Gibbs 692 { Mohnen South Dakota 402
- { Gibbs 692

EPDS	CED	B.W.	W.W.	Y.W.	MILK	MARB.	R.E.	\$W	\$B
	-4	+3.5	+70	+129	+30	+37	+78	+62	+146

Lot 29

## GIBBS STEP UP N1920

REG.#: 21511518

BIRTH DATE: 03/16/2025 TATTOO: N1920 BIRTH WT: 93 ADJ. 205 WT: 736

- EZAR Step Up 9178 { G A R Big Step K715 { G A R Sure Fire
- Basin Lucy 4261 { Chair Rock Prophet 3131
- Gibbs Miss Blackheart 1920 { EXAR Denver 2002B
- { Gibbs Bextor X549 { Basin Lucy 1022
- { Gibbs 832 { C R A Bextor 872 5205 608
- { Gibbs 42U
- { Sitz Madison 10477
- { Gibbs Jae 38

EPDS	CED	B.W.	W.W.	Y.W.	MILK	MARB.	R.E.	\$W	\$B
	-3	+3.8	+78	+135	+23	+1.11	+89	+64	+170

Lot 30

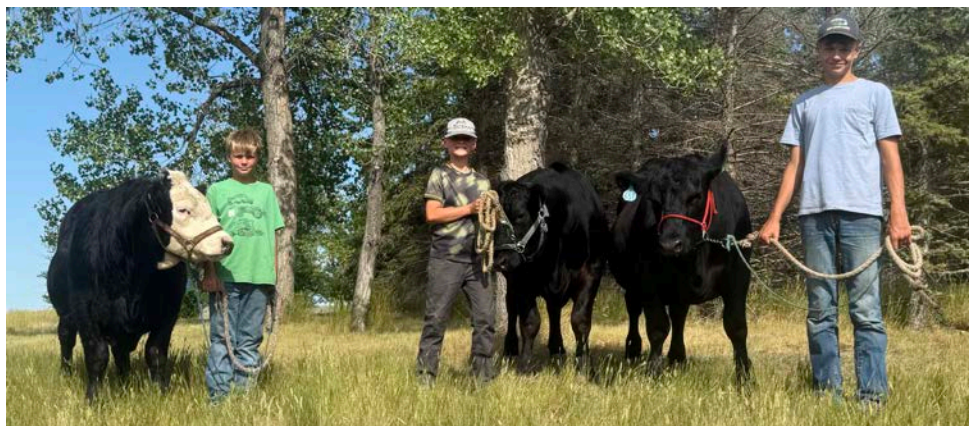
## GIBBS CRAFTSMAN N2587

REG.#: 21511361

BIRTH DATE: 03/22/2025 TATTOO: N2587 BIRTH WT: 84 ADJ. 205 WT: 656

- Connealy Craftsman { Sitz Resilient 10208 { Sitz Stellar 726D
- { Black Cathy of Conanga 8521 { Sitz Miss Burgess 1856
- Gibbs Plenty 2587 { BUBS Southern Charm AA31 { Connealy Niobrara 5451
- { Gibbs Leach 589 { Black Carla of Conanga 450
- { HR Leachman Blackbird 2022
- { Silveiras Conversion 8064
- { Hickory Hill Erica 009
- { H A Image Maker 0415

EPDS	CED	B.W.	W.W.	Y.W.	MILK	MARB.	R.E.	\$W	\$B
	+6	+4	+52	+95	+51	+1.03	+76	+78	+177



# ANGUS BULLS



**Lot 31** **GIBBS INSTITUTION N808** REG.#: 21539937  
 BIRTH DATE: 03/08/2025 TATTOO: N808 BIRTH WT: 93 ADJ. 205 WT: 829

Kenny Institution 2010 { Basin Safe Deposit 9324 { Basin Deposit 6249  
 { Kenny Pet Polite 0810 { Basin Joy 2006  
 { Bar R Jet Black 5063  
 { S A V Rainfall 6846 { Coleman Charlo 8410  
 { Gibbs Lola 527 { S A V Blackcap May 4136  
 { Square B True North 8052  
 { Gibbs Lola 2635

EPDS	CED	B.W.	W.W.	Y.W.	MILK	MARB.	R.E.	\$W	\$B
-	+1.8	+78	-	+28	-	-	-	-	-

**Lot 32** **GIBBS EXTRAVAGANT N679** REG.#: 21508843  
 BIRTH DATE: 03/21/2025 TATTOO: N679 BIRTH WT: 85 ADJ. 205 WT: 716

Gibbs Extravagant J1816 { Sinclair Extravagant 6X7 { N Bar Emulation EXT  
 { Gibbs Sunny 1816 { Sinclair Lady 2P30 8146  
 { S A V Registry 2831  
 { Gibbs 793  
 { S A V Rainfall 6846 { Coleman Charlo 0256  
 { S A V Blackcap May 4136  
 { Gibbs Rae 1935 { Gibbs Bextor X549  
 { Gibbs Rae 718

EPDS	CED	B.W.	W.W.	Y.W.	MILK	MARB.	R.E.	\$W	\$B
+8	+2.1	+60+	101	+18	+54	+25	+42	+133	

**Lot 33** **GIBBS EXTRAVAGANT N302** REG.#: 21526233  
 BIRTH DATE: 04/03/2025 TATTOO: N302 BIRTH WT: 80 ADJ. 205 WT: 706

Gibbs Extravagant J1816 { Sinclair Extravagant 6X7 { N Bar Emulation EXT  
 { Gibbs Sunny 1816 { Sinclair Lady 2P30 8146  
 { S A V Registry 2831  
 { Gibbs 793  
 { E&B New Addition 608 { Connealy Confidence Plus  
 { Gibbs X302 { E&B Lady Dash 4152  
 { Gibbs Density 53S  
 { Gibbs Danny 445

EPDS	CED	B.W.	W.W.	Y.W.	MILK	MARB.	R.E.	\$W	\$B
+10	+8	+48	+82	+18	+61	+12	+32	+122	

**Lot 34** **GIBBS RAINMAKER N2286** REG.#: 21508840  
 BIRTH DATE: 03/25/2025 TATTOO: N2286 BIRTH WT: 90 ADJ. 205 WT: 779

Gibbs Rainmaker G570 { Sitz Rainmaker 11127 { Sitz Rainmaker 8075  
 { Gibbs 570 { Sitz Emma E 417L  
 { Gibbs Danny Boy 95R  
 { Gibbs Danielle 149R  
 { Mohnen South Dakota 402 { Mohnen Density 730  
 { Mohnen Jilt 539  
 { Gibbs Blackie 1033 { Vermilion X Factor  
 { Gibbs Frances 411R

EPDS	CED	B.W.	W.W.	Y.W.	MILK	MARB.	R.E.	\$W	\$B
+2	+4.5	+80	+144	+23	+12	+50	+56	+120	

**Lot 35** **GIBBS RAINMAKER N2051** REG.#: 21508839  
 BIRTH DATE: 03/18/2025 TATTOO: N2051 BIRTH WT: 83 ADJ. 205 WT: 741

Gibbs Rainmaker J2393 { Gibbs Rainmaker G904 { Gibbs Rainmaker D983  
 { Gibbs Forever 2393 { Gibbs Miss Sal 904  
 { Baldrige Command C036  
 { Gibbs Forever 1968  
 { Gibbs Extravagant Y752 { Sinclair Extravagant 6X7  
 { Gibbs 791 { Gibbs Dandy 752  
 { Gibbs Density 53S  
 { Gibbs Opal 468

EPDS	CED	B.W.	W.W.	Y.W.	MILK	MARB.	R.E.	\$W	\$B
+0	+4.5	+82	+137	+19	+43	+50	+59	+144	

**Lot 36** **GIBBS STEP UP N2647** REG.#: 21511509  
 BIRTH DATE: 03/19/2025 TATTOO: N2647 BIRTH WT: 83 ADJ. 205 WT: 694

EZAR Step Up 9178 { G A R Big Step K715 { G A R Sure Fire  
 { Basin Lucy 4261 { Chair Rock Prophet 3131  
 { EXAR Denver 2002B  
 { Basin Lucy 1022  
 { Connealy Stingray 9618 { Connealy Final Solution  
 { Powa of Conanga 9618  
 { Gibbs Jen 681 { S A V 8180 Traveler 004  
 { Gibbs Ame 110

EPDS	CED	B.W.	W.W.	Y.W.	MILK	MARB.	R.E.	\$W	\$B
+4	+1.1	+69	+120	+22	+87	+62	+60	+164	

**Lot 37** **GIBBS STEP UP N105** REG.#: 21511366  
 BIRTH DATE: 03/18/2025 TATTOO: N105 BIRTH WT: 87 ADJ. 205 WT: 657

EZAR Step Up 9178 { G A R Big Step K715 { G A R Sure Fire  
 { Basin Lucy 4261 { Chair Rock Prophet 3131  
 { EXAR Denver 2002B  
 { Basin Lucy 1022  
 { BLUBS Southern Charm AA31 { Silveiras Conversion 8064  
 { Hickory Hill Erica 009  
 { Gibbs Tired 105 { S A V Pioneer 7301  
 { Gibbs 1215 { Gibbs 750

EPDS	CED	B.W.	W.W.	Y.W.	MILK	MARB.	R.E.	\$W	\$B
+8	+1.4	+67	+107	+21	+56	+1.07	+65	+151	



# ANGUS BULLS

Lot 45

## GIBBS TRUE NORTH N276

PUREBRED ANGUS

BIRTH DATE: 03/30/2025 TATTOO: N276 BIRTH WT: 81 ADJ. 205 WT: 765

Gibbs True North J2575 { Square B True North 8052 { S A V Rainfall 6846  
Elabana of Conagna 1209  
Gibbs Camara 2575 { Connealy Comrade 1385  
Gibbs Black Sun 2155  
Gibbs Absolute E1777 { K C F Bennett Absolute  
Gibbs Miss Maddy 1777  
Gibbs 276 { Gibbs D938  
Gibbs 2290 { Gibbs 1237



Lot 46

## GIBBS TRUE NORTH N1851

REG.#: 21511287

BIRTH DATE: 03/13/2025 TATTOO: N1851 BIRTH WT: 84 ADJ. 205 WT: 647

Square B True North 8052 { S A V Rainfall 6846 { Coleman Charlo 0256  
S A V Blackcap May 4136  
Elbanna of Conanga 1209 { Connealy Consensus  
Elbasta of Conanga 9703  
A A R Ten X 7008 S A  
Deer Valley Rita 0308  
Gibbs Camille 1851 { V A R Discovery 2240 { S A V Iron Mountain 8066  
Gibbs Cam 1030 { Gibbs Outback 291

EPDS	CED	B.W.	W.W.	Y.W.	MILK	MARB.	R.E.	\$W	\$B
	+6	+2	+57	+111	+34	+62	+46	+63	+121

Lot 47

## GIBBS RAINFALL N2630

REG.#: 21511369

BIRTH DATE: 03/24/2025 TATTOO: N2630 BIRTH WT: 86 ADJ. 205 WT: 616

S A V Rainfall 6846 { Coleman Charlo 0256 { O C C Paxton 730P  
Bohi Abigale 6014  
S A V Blackcap May 4136 { S A V 8180 Traveler 004  
S A V May 2397  
Gibbs Eden 2630 { A A R Ten X 7008 S A { Mytty In Focus  
A A R Lady Kelton 5551  
Gibbs 1390 { Gibbs Retail Answer 478W  
Gibbs 353

EPDS	CED	B.W.	W.W.	Y.W.	MILK	MARB.	R.E.	\$W	\$B
	-1	+4.2	+59	+110	+20	+87	+64	+37	+134

Lot 48

## GIBBS GUARD RAIL N862

PUREBRED ANGUS

BIRTH DATE: 03/02/2025 TATTOO: N862 BIRTH WT: 80 ADJ. 205 WT: 676

Connealy Guard Rail 923E { Tehama Tahoe B767 { Tehama Upward Y238  
Tehama Blackbird Y684  
Queen Babes Conanga 870J { Connealy Legendary 644L  
Queen Barb of Conanga 60C  
Gibbs 862 { Gibbs Enhance H2323 { SydGen Enhance  
Gibbs Design 2323  
Gibbs 245 { Gibbs D730  
Gibbs 1653



Lot 49

## GIBBS GUARD RAIL N736

PUREBRED ANGUS

BIRTH DATE: 03/04/2025 TATTOO: N736 BIRTH WT: 88 ADJ. 205 WT: 652

Connealy Guard Rail 923E { Tehama Tahoe B767 { Tehama Upward Y238  
Tehama Blackbird Y684  
Queen Babes Conanga 870J { Connealy Legendary 644L  
Queen Barb of Conanga 60C  
Gibbs 736 { Gibbs H2092 { Gibbs E1145  
Gibbs Miss Absolute 2092  
Gibbs 14 { Gibbs A1002  
Gibbs 2335



Lot 50

## GIBBS PATRIARCH N857

REG.#: 21533803

BIRTH DATE: 03/28/2025 TATTOO: N857 BIRTH WT: 80 ADJ. 205 WT: 728

Gibbs Patriarch K226 { Tehama Patriarch F028 { S S Niagara Z29  
Tehama Elite Blackbird D826  
Gibbs Moonbright 226 { Gibbs Discovery E1610  
Gibbs Moonbright 1262  
Coleman Charlo 0256  
S A V Blackcap May 4136  
Gibbs No Kidding 857 { S A V Rainfall 6846 { BUBS Southern Charm AA31  
Gibbs No Kidding 231 { Gibbs 886

EPDS	CED	B.W.	W.W.	Y.W.	MILK	MARB.	R.E.	\$W	\$B
	+9	+0.8	+80	+143	+25	+51	+1.05	+80	+149



Lot 51

## GIBBS GROWTH FUND N2565

REG.#: 21511378

BIRTH DATE: 03/26/2025 TATTOO: N2565 BIRTH WT: 78 ADJ. 205 WT: 726

Deer Valley Growth Fund { Basin Payweight 1682 { Basin Payweight 006S  
21AR O Lass 7017  
Deer Valley Rita 36113 { Plattemere Weigh Up K360  
Deer Valley Rita 9457  
Gibbs Gal 2565 { BUBS Southern Charm AA31 { Silveiras Conversion 8064  
Hickory Hill Erica 009  
Gibbs Gal 850 { Gardens Wave  
Gibbs 566

EPDS	CED	B.W.	W.W.	Y.W.	MILK	MARB.	R.E.	\$W	\$B
	+5	+1.0	+75	+128	+35	+86	+59	+91	+165

# ANGUS BULLS

**Lot 52** **GIBBS GUARD RAIL B847** REG.#: 21531568

BIRTH DATE: 03/07/2025 TATTOO: N847 BIRTH WT: 78 ADJ. 205 WT: 741

Connealy Guard Rail 923E { Tehama Tahoe B767 { Tehama Upward Y238  
Queen Babes of Conanga 870J { Tehama Mary Blackbird Y684  
Connealy Legendary 644L  
Queen Barb of Conanga 60C

Gibbs Nel 847 { S A V Rainfall 6846 { Coleman Charlo 0256  
S A V Blackcap May 4136  
E&B New Addition 608  
Gibbs Nel 497 { Gibbs 791

**Lot 53** **GIBBS GUARD RAIL N781** REG.#: 21526234

BIRTH DATE: 03/06/2025 TATTOO: N781 BIRTH WT: 82 ADJ. 205 WT: 641

Connealy Guard Rail 923E { Tehama Tahoe B767 { Tehama Upward Y238  
Tehama Mary Blackbird Y684  
Connealy Legendary 644L  
Queen Barb of Conanga 60C

Gibbs Nell 781 { Gibbs Rainmaker G1134 { Sitz Rainmaker 11127  
Gibbs Black Miss 1134  
Gibbs Retail Answer 478W  
Gibbs Famous 9R

EPDS	CED	B.W.	W.W.	Y.W.	MILK	MARB.	R.E.	\$W	\$B
	+10	+0	+63	+101	+35	+54	+92	+82	+142

EPDS	CED	B.W.	W.W.	Y.W.	MILK	MARB.	R.E.	\$W	\$B
	+3	+1.3	+65	+114	+27	+68	+59	+71	+141

**Lot 54** **GIBBS MOVING ON N934** PUREBRED ANGUS

BIRTH DATE: 03/12/2025 TATTOO: N934 BIRTH WT: 78 ADJ. 205 WT: 775

Baldrige Moving On G780 { Baldrige Alternative E125 { Poss Easy Impact 0119  
Baldrige Blackbird A030  
G A R Prophet  
Baldrige Isabel B061 { Baldrige Isabel Y69  
S S Niagara Z29

Gibbs 934 { Tehama Patriarch F028 { Tehama Elite Blackbird D826  
Heiken Broadview  
Gibbs 310 { Gibbs 2581

**Lot 55** **GIBBS GUARD RAIL N919** PUREBRED ANGUS

BIRTH DATE: 03/05/2025 TATTOO: N919 BIRTH WT: 71 ADJ. 205 WT: 634

Connealy Guard Rail 923E { Tehama Tahoe B767 { Tehama Upward Y238  
Tehama Blackbird Y684  
Connealy Legendary 644L  
Queen Barb of Conanga 60C

Gibbs 919 { Gibbs Enhance H2260 { SydGen Enhance  
Gibbs 2260  
Gibbs Rainmaker D983  
Gibbs Jae 1204



**Lot 56** **GIBBS GUARD RAIL N2450** REG.#: 21508838

BIRTH DATE: 03/25/2025 TATTOO: N2450 BIRTH WT: 79 ADJ. 205 WT: 648

Connealy Guard Rail 923E { Tehama Tahoe B767 { Tehama Upward Y238  
Tehama Mary Blackbird Y684  
Connealy Legendary 644L  
Queen Barb of Conanga 60C

Gibbs Jane 2450 { Connealy Black Granite { Connealy Consensus 7229  
Eura Elga of Conanga 9109  
A A R Ten X 7008 S A  
Gibbs 1365 { Gibbs 845

**Lot 57** **GIBBS TRUE GRIT N859** REG.#: 21511344

BIRTH DATE: 03/04/2025 TATTOO: N859 BIRTH WT: 89 ADJ. 205 WT: 671

Basin True Grit 1021 { Square B True North 8052 { S A V Rainfall 6846  
Elbanna of Conanga 1209  
Basin Rainmaker 4404  
Basin Camilla 7026

Gibbs Blackie 859 { S A V Rainfall 6846 { Coleman Charlo 0256  
S A V Blackcap May 4136  
Gibbs Traveler 517  
Gibbs Blackie 377

EPDS	CED	B.W.	W.W.	Y.W.	MILK	MARB.	R.E.	\$W	\$B
	+13	-0.7	+58	+103	+31	+65	+55	+67	+136

EPDS	CED	B.W.	W.W.	Y.W.	MILK	MARB.	R.E.	\$W	\$B
	+8	+1.2	+62	+111	+38	+73	+89	+78	+153







# ANGUS BULLS

**Lot 71** **GIBBS GUARD RAIL N844** **PUREBRED ANGUS**

<b>BIRTH DATE:</b> 02/22/2025	<b>TATTOO:</b> N844	<b>BIRTH WT:</b> 90	<b>ADJ. 205 WT:</b> 724
----------------------------------	------------------------	------------------------	----------------------------

Connealy Guard Rail 923E { Tehama Tahoe B767 { Tehama Upward Y238  
 { Queen Babes Conanga 870J { Tehama Blackbird Y684  
 { Gibbs Final Answer G2138 { Connealy Legendary 644L  
 { Gibbs 2469 { Queen Barb of Conanga 60C  
 { S A V Final Answer 0035  
 { Gibbs Abby 2138  
 { Gibbs C1345  
 { Gibbs 1504

**Lot 72** **GIBBS RAINFALL N136** **PUREBRED ANGUS**

<b>BIRTH DATE:</b> 03/22/2025	<b>TATTOO:</b> N136	<b>BIRTH WT:</b> 82	<b>ADJ. 205 WT:</b> 641
----------------------------------	------------------------	------------------------	----------------------------

S A V Rainfall 6846 { Coleman Charlo 0256 { O C C Paxton 730P  
 { S A V Blackcap May 4136 { Bohi Abigale 6014  
 { Sitz Alpine 11076 { S A V 8180 Traveler 004  
 { Gibbs 2306 { S A V May 2397  
 { KM Broken Bow 002  
 { Sitz Ellunas Elite 1874  
 { Gibbs C832  
 { Gibbs 1642

**Lot 73** **GIBBS TRUE NORTH N891** **PUREBRED ANGUS**

<b>BIRTH DATE:</b> 02/26/2025	<b>TATTOO:</b> N891	<b>BIRTH WT:</b> 76	<b>ADJ. 205 WT:</b> 633
----------------------------------	------------------------	------------------------	----------------------------

Square B True North 8052 { S A V Rainfall 6846 { Coleman Charlo 0256  
 { Elbana of Conanga 1209 { S A V Blackcap May 4136  
 { Connealy Consensus  
 { Elbasta of Conanga 9703  
 { Gibbs D1341  
 { Gibbs B622  
 { Gibbs 1341  
 { Gibbs C832  
 { Gibbs Fran 668  
 { Gibbs 891  
 { Gibbs 2194

**Lot 74** **GIBBS TRUE NORTH N902** **PUREBRED ANGUS**

<b>BIRTH DATE:</b> 03/09/2025	<b>TATTOO:</b> N902	<b>BIRTH WT:</b> 80	<b>ADJ. 205 WT:</b> 665
----------------------------------	------------------------	------------------------	----------------------------

Square B True North 8052 { S A V Rainfall 6846 { Coleman Charlo 0256  
 { Elbana of Conanga 1209 { S A V Blackcap May 4136  
 { Connealy Consensus  
 { Elbasta of Conanga 9703  
 { Gibbs G1297  
 { Gibbs E1145  
 { Gibbs Lady 1297  
 { Gibbs Discovery C923  
 { Gibbs Sunny 1782  
 { Gibbs 902  
 { Gibbs 2406



## ANGUS GENETICS INC (AGI)

All of the bulls have been verified parentage tested through Angus Genetics Inc (AGI), this enables us to present the most accurate information that we can regarding our bull calves. All bulls that have EPDs have genomically enhanced EPDs, which enables you to see a much more accurate representation of what these bulls are capable of. The genomically enhanced EPDs enable a producer to purchase a young bull with the same confidence as purchasing a bull that has sired 10-18 progeny; the accuracy in the EPDs has already been found through genomic testing.



# GIBBS ANGUS RANCH

*Raising Bulls that Breed Better Beef*



FROM OUR FAMILY TO YOURS, THANK YOU

*all of you who have purchased bulls in the past*

We appreciate all of your support and look forward to seeing you on sale day!



# **GIBBS ANGUS RANCH**

**Tim and Laurie Gibbs**

738 ROAD 130 • FALLON, MT 59326

*PLEASE BRING THIS CATALOG TO THE SALE*



**PERFORMANCE ON THE PRAIRIE ANNUAL SALE**

# **GIBBS ANGUS RANCH**

**FRIDAY, APRIL 24, 2026**

**1PM MST • Glendive Livestock Exchange, Glendive, MT**

*Raising Bulls that Breed Better Beef*