

TIMBER LINE RANCH

**BRED FOR**  
**BUSINESS**

*Bull Sale*

04.17.2026

# Fellow Cattlemen,

Welcome to our fifth annual Bred for Business bull sale. Like most, our goal is to make each calf crop better than the last. We think we have achieved that with this year's offering and look forward to your assessment. With over 7 decades of experience in the Angus business we thought "Bred for Business" was only fitting. We believe in a sharp knife; just the top 40% of this year's calf crop made into the bull pen. We make sure to use herd bulls that give us a consistent calf crop, each as good as the next. This, along with 40 plus years of utilizing AI and embryo transfer, has given us a unique opportunity to continually and consistently improve the quality of our cow herd. We work to improve weaning weights, while keeping birth weights in check without sacrificing phenotype, soundness or foot quality. We strive to raise the type of well made, performance driven cattle that keep us and our customers in business.

Hopefully this spring brings rain and reassurance to cattlemen across the region. You will find the offering EPD's have been genomically enhanced. Fertility Testing and free delivery (bulls only) within 500 miles make these bulls ready to get to work for you. We have enrolled our herd in Maternal Plus with the American Angus Association. AAA has developed a functional longevity (FL) EPD to help cattlemen assess what bloodlines are more apt to stay in your herd. Over 93% of our cow base ranks above breed average. As we write the footnotes and study the bull data every year it is fun to see these cows in pedigrees again and again.



We believe the functional longevity EPD will be useful to our fellow producers so we've added FL to the bull data for your assessment this year. We have also added frame score. It's information that we think is important and relevant in our decision making, so we wanted to include it for you as well.

We are offering 40 commercial heifers in the sale as well. They will be sorted and lotted by size and will sell in lot order in groups of 5 or more. They can be viewed any time at the feedlot and will be on location for sale day. They are bangs vaccinated and ready to breed.

We have an incredible group of friends and neighbors and we sure owe a lot of our success to their unwavering support. Thank you for taking time to look through our offering, we are humbled by your interest in our program. If you have any questions, or would like to come visit, please feel free to reach out.



*- Jake + Family*

*See you  
April 17th!*

JAKE CALLANTINE & FAMILY  
406.581.4764  
TIMBERLINEANGUS.COM





### **SALE DETAILS**

Sale will be held at 1 pm on Friday, April 17<sup>th</sup>, 2026 at the Veltkamp Livestock feedyard in Manhattan, Montana. Cattle will be available for viewing any time before the sale. Please join us for lunch on Friday at noon.

### **OFFERING**

53 Yearling Angus Bulls  
40 Open Yearling Commercial Angus Heifers

### **CONTACTS**

Jake Callantine (406) 581-4764  
Cate Doubet (406) 581-5931  
Curtis Doubet (303) 681-7086  
Kallie Herrygers (406) 539-1778  
Krista Callantine (406) 600-8803

### **AUCTIONEER**

Joe Goggins (406) 861-5664

### **SPECIAL REPRESENTATIVES**

Ron Frye (406) 600-7514  
Kurt Kangus (406) 366-4190  
John Goggins (406) 698-4159  
Andy Rest (406) 670-5678

### **DIRECTIONS**

#### **NEW LOCATION**

★ Veltkamp Livestock Feedyard  
11526 Gravel Pit Road, Manhattan MT, 59741

Timber Line Ranch  
3689 Flathead Pass Rd, Belgrade, MT 59714

### **HERD HEALTH**

All bulls come accompanied with proper health certificates for shipment. All bulls are fertility tested by Sorensen Intermountain Vet.

### **EPDS**

All EPDs have been genomically enhanced.

### **VIDEOS**

View them online at [timberlineangus.com](http://timberlineangus.com)  
& [frontierlivesale.com](http://frontierlivesale.com).





## **DELIVERY**

Free delivery within 500 miles. Beyond can be negotiated to what is most fair/reasonable for the customer. Delivery for bulls only. Buyer is responsible for heifer transportation.

## **TERMS**

Cattle will sell under the suggested Terms and Conditions of the American Angus Association ([http://www.angus.org/Pub/suggested\\_sale\\_terms.pdf](http://www.angus.org/Pub/suggested_sale_terms.pdf)).

## **GUARANTEE**

All bulls selling are covered 100% for the first 90 days of the breeding season. We understand that each circumstance is different and will be treated as such. If you have an issue with your purchase we want to know and will stand behind our bulls.

## **SIGHT UNSEEN GUARANTEE**

If your schedule or location does not allow you to come and see the bulls for yourself, give us a call and we will choose bulls based on your preferences, satisfaction guaranteed!

## **LIABILITY**

All persons who attend the sale do so at their own risk. Timber Line Ranch and Veltkamp Livestock assume no liability, legal or otherwise, for any accidents which may occur.

## **RETAINED INTEREST**

Timber Line Ranch are retaining 1/3 semen interest in all bulls. Natural use and salvage value belong to the buyer.

## **ONLINE BIDDING**

The sale will be hosted online through Frontier Live Sales. Bid and watch the sale online at [frontierlivesale.com](http://frontierlivesale.com).

**RFM**  
RON FRYE MARKETING  
406.600.7514



**Scan to watch videos  
& bid online**



## Welcome to the annual Timber Line Ranch Bull Sale!

Timber Line Ranch has built a lasting legacy in the Angus industry, shaping the genetics of Montana cattle for generations. This family's deep-rooted commitment to raising high-quality Angus bulls has left a significant mark on the Gallatin Valley and beyond. Jake Callantine, a respected leader in the Montana Angus community, has dedicated his life to the breed, serving on the board of directors and as a two-term President. His knowledge and experience continue to influence the future of Angus genetics.

As we look ahead to the 2026 sale, Timber Line Ranch remains steadfast in its mission to provide performance-driven bulls with the longevity and quality that define the Timber Line prefix. This offering represents decades of careful breeding, ensuring these bulls are ready to

Line

make a positive impact on any program.

In addition to the outstanding bulls, this year's sale also includes an excellent selection of heifer calves. These females are bred for performance and maternal strength, offering an opportunity to add top-tier genetics to your herd. Available in large groups of five or more, these heifers provide a valuable investment for those looking to expand or enhance their breeding program.

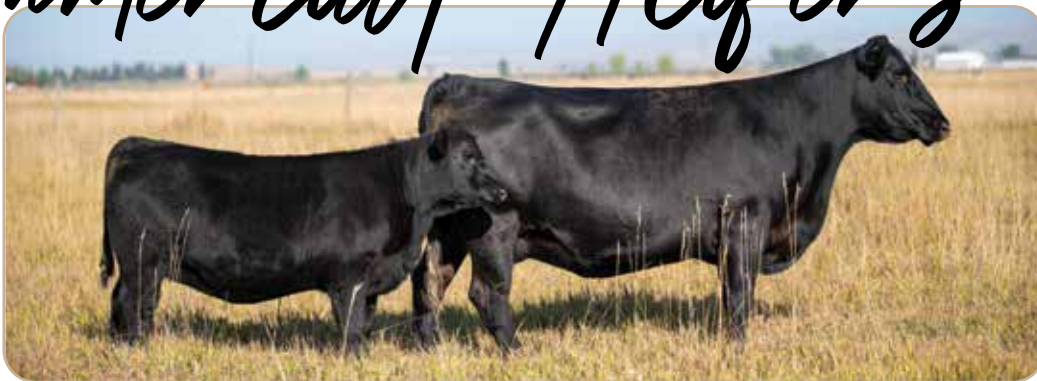
The Callantine family takes great pride in presenting this outstanding group of bulls for your evaluation. Whether you choose to view them ahead of sale day or need assistance with remote purchasing, we are committed to making the process seamless. These bulls are available for inspection anytime before the sale—just reach out with any questions.

Thank you for considering Timber Line Ranch for your breeding needs. We appreciate your support and look forward to serving you. If you have any questions about the sale or need assistance on sale day, please don't hesitate to give me a call.

Warm regards,

*Ron Iyer*  
MARKETING  
406.600.7514

# Commercial Heifers



We're pleased to offer 40 head of yearling commercial Angus heifers. These females come from the center of our registered and commercial herd and are developed right alongside the bulls at Veltkamp Livestock. They will weigh approximately 800 pounds on sale day, be sorted and lotted by size (largest to smallest), and will sell in lot order in groups of 5 or more. They can be viewed any time at the feedlot and will be on location for sale day. They are bang vaccinated and ready to breed.



## TIMBER LINE RISENSHINE 55

AAA: 21439901 DOB: 02/26/25 Tattoo: 55

Hoffman Stagecoach 1908 |

|LAR Man In Black

**Stellflug Hoffman RiseAbove**

**TLR Miss Eileenmere D18**

Hoffman 3210 Rita Lady 0256 |

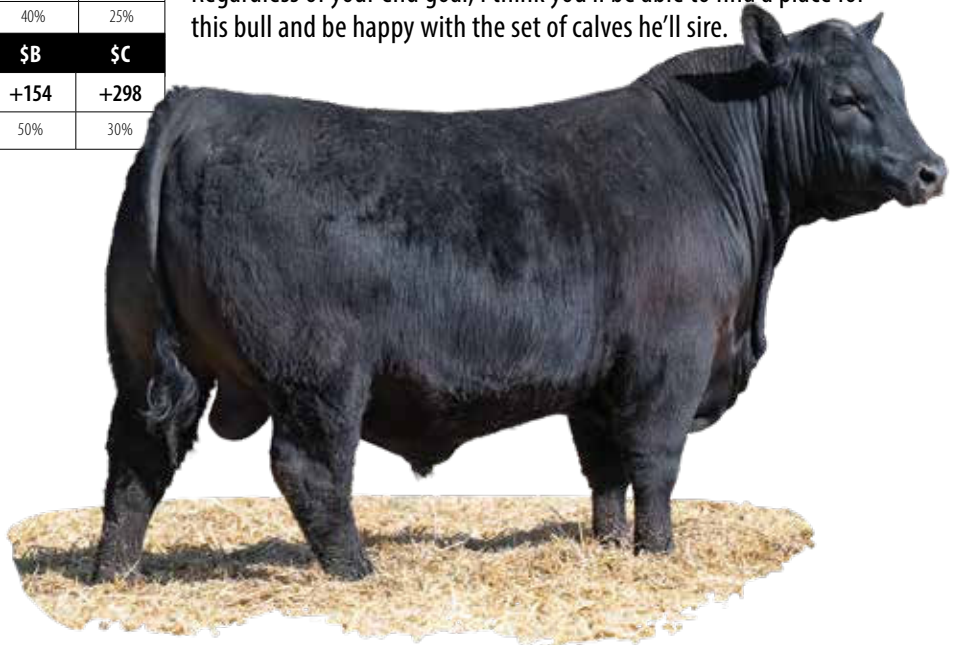
|TLR Miss Eileenmere 8-26

ACT BW	ADJ WW	ADJ YW	FRAME	ACT SC	DAMS PROD		
78	781	1298	5.5	39.1	1/107		
CED	BW	WW	YW	SC	M	CEM	DOC
+8	+0.4	+82	+145	+1.59	+28	+9	+25
35%	30%	20%	15%	15%	40%	40%	25%
CLAW	ANGLE	FL	MARB	REA	\$M	\$B	\$C
+38	+24	+1.13	+70	+46	+98	+154	+298
15%	1%	20%	55%	80%	4%	50%	30%

A crowd favorite here and for an awfully good reason! I really like this bull in terms of his overall stoutness and dimension. He's super powerful coming and going and does it without sacrificing structure. He's got a big time herd bull look and presence while reading with an intriguing number profile as well. Lot 1 ranks in the top 20% of the breed for WW and YW, top 15% for Claw and 1% for Angle but is also impressively in the top 4% for \$M. I could write another book about the cows in his pedigree but the main take away is his first calf mother knocked this one out of the park. Regardless of your end goal, I think you'll be able to find a place for this bull and be happy with the set of calves he'll sire.



Stellflug Hoffman RiseAbove





**TIMBER LINE RISENSHINE 45**

AAA: 21439900 DOB: 02/26/25 Tattoo: 45

Hoffman Stagecoach 1908 | SITZ Incentive 704H  
**Stellpflug Hoffman RiseAbove** X **TLR Bella KL D26**  
 Hoffman 3210 Rita Lady 0256 | TLR Bella KL 6-08

We could not be more pleased with how these Rise Above matings worked. This bull covers all the basics of power, dimension and build at a really high level. From the side he's attractive about his head and neck, long spined and deep bodied. When he turns he has lots of muscle and expression with the kind of bone and substance we like. He's a performance driven bull that ranks in the top 10% of the breed for weaning weight. And if all that isn't enough - he's out of first calf heifer with an arsenal of workhorse cows in his pedigree.

ACT BW	ADJ WW	ADJ YW	FRAME	ACT SC	DAMS PROD		
82	732	1236	5	33.6	1/101		
CED	BW	WW	YW	SC	M	CEM	DOC
+5	+1.4	+87	+139	+41	+26	+7	+19
60%	55%	10%	25%	80%	50%	65%	55%
CLAW	ANGLE	FL	MARB	REA	\$M	\$B	\$C
+0.39	+0.41	+1.09	+0.35	+0.32	+101	+117	+253
15%	20%	40%	90%	90%	3%	90%	65%



Headed to the World Angus Forum with Montana's Finest!



### TIMBER LINE RISENSHINE 85

AAA: 21439902 DOB: 03/01/25 Tattoo: 85

Hoffman Stagecoach 1908

|SITZ Incentive 704H

**Stellplug Hoffman RiseAbove** X **TLR Everelda Entense KL D14**

Hoffman 3210 Rita Lady 0256 | TLR Everelda Entense 3-05

ACT BW	ADJ WW	ADJ YW	FRAME	ACT SC	DAMS PROD		
84	774	1318	5.5	37.7	1/106		
CED	BW	WW	YW	SC	M	CEM	DOC
+7	+1.5	+86	+142	+13	+16	+8	+28
45%	55%	10%	20%	95%	95%	55%	15%
CLAW	ANGLE	FL	MARB	REA	\$M	\$B	\$C
+45	+44	+1.13	+78	+86	+97	+178	+328
35%	35%	20%	45%	35%	4%	25%	15%

I'm not too proud to tell you that these Rise Above matings were dad's idea – and man, did they turn out! This lot 3 bull has an impressive combination of muscle, power, and stoutness. This bull is so genuine in his body shape and square at the ground but it's his structural quality and build that really makes him special. His granddam is my absolute favorite cow on the place, who just weaned my favorite heifer calf at 16 years old. This bull has performance to burn and maternal backing and longevity to do some really neat things.



Scan to watch videos & bid online





Lot 4 made the short list of pairs that we displayed on the Montana Angus Tour this fall. He is a stand out for presence and structure. His mother is a beautiful, massive bodied, and stout made Vermilion Sirloin daughter that has raised an impressive 4 at 106. He's a performance driven bull with a refreshing amount of look and quality. We like him!



## TIMBER LINE RISENSHINE 345

AAA: 21439903 DOB: 03/17/25 Tattoo: 345

Hoffman Stagecoach 1908 |

Vermilion Sirloin

**Stellplug Hoffman RiseAbove** X

**TLR Miss Eilmere A31**

Hoffman 3210 Rita Lady 0256 |

TLR Miss Eileenmere W39

ACT BW	ADJ WW	ADJ YW	FRAME	ACT SC	DAMS PROD		
81	774	1176	5.5	35.9	4/106		
CED	BW	WW	YW	SC	M	CEM	DOC
-2	+3.4	+91	+142	+1.51	+22	+6	+23
95%	90%	5%	20%	15%	80%	70%	35%
CLAW	ANGLE	FL	MARB	REA	\$M	\$B	\$C
+.52	+.40	+1.04	+.50	+.47	+83	+140	+265
65%	20%	65%	75%	80%	20%	70%	55%



### TIMBER LINE CRAFTSMAN 225

AAA: 21506752 DOB: 03/12/25 Tattoo: 225

Sitz Resilient 10208 |

Werner EA Motivation 2031

Connealy Craftsman X TLR Luna CJ 8-04

Black Cathy of Conanga 8521 |

TLR Luna CJ 6-24



### TIMBER LINE CRAFTSMAN 475

AAA: 21439905 DOB: 03/22/25 Tattoo: 475

Sitz Resilient 10208 |

Werner EA Motivation 2031

Connealy Craftsman X TLR Edella 8-08

Black Cathy of Conanga 8521 |

TLR Edella 6-30

ACT BW	ADJ WW	ADJ YW	FRAME	ACT SC	DAMS PROD		
90	697	1327	6	39.8	10/101		
CED	BW	WW	YW	SC	M	CEM	DOC
+6	+1.5	+65	+119	+44	+40	+6	+15
55%	55%	60%	55%	80%	1%	70%	75%
CLAW	ANGLE	FL	MARB	REA	\$M	\$B	\$C
+30	+36	+1.07	+48	+93	+77	+137	+255
3%	10%	50%	80%	25%	30%	70%	60%

ACT BW	ADJ WW	ADJ YW	FRAME	ACT SC	DAMS PROD		
93	791	1247	6.5	33.1	4/114		
CED	BW	WW	YW	SC	M	CEM	DOC
+5	+0.2	+80	+143	-37	+29	+9	+13
60%	30%	20%	20%	95%	30%	40%	80%
CLAW	ANGLE	FL	MARB	REA	\$M	\$B	\$C
+36	+41	+1.06	+67	+1.00	+86	+174	+312
10%	20%	55%	60%	20%	15%	30%	20%

The natural calf out of the 8-04 donor and this one is good! He is made right, built good from the ground up. He has an awesome foot and extra bone. He's a long bodied bull with a rugged beef bull look and all the stoutness and expression you could want. If you're looking increase frame size without sacrificing muscle or build he is your guy.

There is plenty to love about lot 6. He is a large framed bull that is impressive in the amount of muscle he has and how expressive he his over his top and into his quarter. He's one of the high performing bulls in the offering with a mother that boasts an impressive 4@114. He ranks in the top 20% of the breed for both WW and YW, and \$C.





## TIMBER LINE CRUSHER 275

AAA: 21507459 DOB: 03/14/25 Tattoo: 275

Marcys Scale Crusher

Werner EA Motivation 2031

HA Scale Boss H677 X TLR Luna CJ 8-04

HA Lass 3303

TLR Luna CJ 6-24

ACT BW	ADJ WW	ADJ YW	FRAME	ACT SC	DAMS PROD		
76		1118	4.5	38	10/101		
CED	BW	WW	YW	SC	M	CEM	DOC
+17	-1.9	+53	+100	+42	+34	+11	+13
1%	4%	90%	85%	80%	10%	25%	80%
CLAW	ANGLE	FL	MARB	REA	\$M	\$B	\$C
+47	+46	+1.18	-.05	+20	+71	+86	+183
45%	45%	10%	95%	95%	40%	95%	95%

This moderate framed bull is a meat wagon. He's rugged and masculine up front with tremendous power. We really like how he's made with added shape and his expression of muscle giving him a true herd bull look. A really high quality individual with an intriguing heifer bull EPD profile.



HA Scale Boss H677



## TIMBER LINE CRUSHER 175

AAA: 21506755 DOB: 03/08/25 Tattoo: 175

Marcys Scale Crusher

Werner EA Motivation 2031

HA Scale Boss H677 X TLR Luna CJ 8-04

HA Lass 3303

TLR Luna CJ 6-24

ACT BW	ADJ WW	ADJ YW	FRAME	ACT SC	DAMS PROD		
ET	803	1320	5	36.6	10/101		
CED	BW	WW	YW	SC	M	CEM	DOC
+14	-0.6	+71	+125	+69	+21	+7	+22
4%	15%	45%	45%	65%	85%	65%	40%
CLAW	ANGLE	FL	MARB	REA	\$M	\$B	\$C
+58	+49	+1.03	-.08	+74	+41	+123	+201
85%	60%	70%	95%	45%	95%	85%	95%

If you're looking for a curve bender, here he is! The lot 8 bull is long spined and smooth shouldered with no shortage of muscle and punch. He's a big time heifer bull but still one of the highest performing bulls in the group. The 8-04 cow does not miss, and this Scale Boss flush is exactly the kind of production driven cattle we are after.



## FRONTIER LIVE SALE

This Sale will be broadcast live on [www.frontierlivesale.com](http://www.frontierlivesale.com). To view a sale,

1. Create an account, if you have already done so skip to next step. To create a new account, click on the word **Registration** in the upper right hand corner. You must fill out the information requested. Then click **Create Account**. An email will be sent to your email account you provided. Please click the link in the email to activate your new account.



2. Once you click the link, your account will now be activated
3. At this point, you may click **Continue To Browse Our Site**. This will allow you to view all upcoming auctions.
4. Once you see the auction you are interested in, click **Get Approved To Bid** for absentee and live bidding.
5. Please enter your information in the form. Depending on the auctioneer, different information may be requested. Click **I agree to sale terms and conditions**. Congratulations! You are now approved for the auction. Now that you're approved you can participate in the auction and bid on its items.
6. Login on sale day with the credentials provided at registration.

Call 866-313-0123 for tech help.



TLR Eliminatress 051



**TIMBER LINE BIG AIR 445**

AAA: 21506754 DOB: 03/20/25 Tattoo: 445

LD Capitalist 316 |

| S A V 004 Density 4336

**Connealy King Air** X **TLR Eliminatress 051**

Pasha of Conanga 557P |

| TLR Eliminatress E74



**TIMBER LINE BIG AIR 245**

AAA: Pending DOB: 3/13/25 Tattoo: 245

LD Capitalist 316 |

| S A V 004 Density 4336

**Connealy King Air** X **TLR Eliminatress 051**

Pasha of Conanga 557P |

| TLR Eliminatress E74

ACT BW	ADJ WW	ADJ YW	FRAME	ACT SC	DAMS PROD		
ET	771	1243	5.5	37	12/103		
CED	BW	WW	YW	SC	M	CEM	DOC
+8	+2.0	+64	+114	+.50	+25	+8	+10
35%	70%	65%	65%	75%	60%	55%	90%
CLAW	ANGLE	FL	MARB	REA	\$M	\$B	\$C
+.45	+.46	+1.1	+.73	+.40	+72	+147	+263
35%	45%	35%	50%	85%	40%	60%	55%

ACT BW	ADJ WW	ADJ YW	FRAME	ACT SC	DAMS PROD		
ET	676	1094	5	34	12/103		
CED	BW	WW	YW	SC	M	CEM	DOC
%	%	%	%	%	%	%	%
CLAW	ANGLE	FL	MARB	REA	\$M	\$B	\$C
		+					
%	%	%	%	%	%	%	%

This is the kind of quality we expect from the 051 cow and she sure delivered here! This King Air son is really, really nice! He comes with a moderate, square build and is loaded up with muscle. Deep bodied, soft, and really good in his shape. 44 is clean and smooth about his head and neck creating a really striking look from the side. His combination look and power will not go unnoticed!

Here's a King Air out of the tried and true 051 donor. This one offers a little sharper look and more moderation than we have seen in this mating, he's high quality! This bull checks all the boxes for bone, muscle, and shape but I think it's his quality of build and look from the side that make him special.



**11****TIMBER LINE BIG AIR 505**

AAA: 21439906 DOB: 03/22/25 Tattoo: 505

LD Capitalist 316

Connealy Spur

**Connealy King Air** X **TLR Miss Eileenmere A38**

Pasha of Conanga 557P

TLR Miss Eileenmere 5-07



ACT BW	ADJ WW	ADJ YW	FRAME	ACT SC	DAMS PROD		
83	780	1158	5.5	38.7	3/103		
CED	BW	WW	YW	SC	M	CEM	DOC
+9	+1.4	+72	+130	+1.64	+26	+13	+25
30%	55%	40%	35%	10%	50%	10%	25%
CLAW	ANGLE	FL	MARB	REA	\$M	\$B	\$C
+.42	+.47	+1.23	+.78	+.51	+87	+172	+310
25%	50%	1%	45%	75%	15%	30%	20%

The lot 11 bull offers some real advantages in the look category. He's smooth shouldered and clean fronted like you would expect from King Air but on top of that he's deep bodied and level hiped.

**12****TIMBER LINE BLUE PRINT 185**

AAA: 21439913 DOB: 03/09/25 Tattoo: 185

Connealy Confidence Plus

Connealy Thunder

**Woodhill Blueprint** X **TLR Edella 5-05**

Woodhill Evergreen Z291-B233

TLR Edella 3-02



ACT BW	ADJ WW	ADJ YW	FRAME	ACT SC	DAMS PROD		
ET	800	1264	5.5	41	7/100		
CED	BW	WW	YW	SC	M	CEM	DOC
+4	+1.9	+76	+127	+1.00	+24	+5	+12
70%	65%	30%	40%	45%	65%	80%	85%
CLAW	ANGLE	FL	MARB	REA	\$M	\$B	\$C
+.54	+.56	+1.06	+.39	+.82	+43	+150	+238
75%	90%	55%	85%	35%	95%	55%	75%

Another exciting ET calf! Lot 12 is rugged and masculine, with tremendous shape of muscle and turn to his rib cage. Love the added bone and substance he offers too. He's a bull that's made right with good feet and blends a strong maternal pedigree into extra performance; we really like his kind.

**13****TIMBER LINE EFFECTIVE 255**

AAA: 21444470 DOB: 03/18/25 Tattoo: 255

AB-LVS Capitalist 4507

Apex Windy 078

**McD Effective 789** X **HA Blackcap Lady 2327**

McD Performiss 238

H A Blackcap Lady 1055



ACT BW	ADJ WW	ADJ YW	FRAME	ACT SC	DAMS PROD		
82	746	1305	5.5	32.3	13/101		
CED	BW	WW	YW	SC	M	CEM	DOC
+10	-0.8	+63	+101	+.50	+28	+3	+22
20%	15%	70%	85%	75%	40%	90%	40%
CLAW	ANGLE	FL	MARB	REA	\$M	\$B	\$C
+.43	+.41	+1.09	+.33	+.76	+80	+138	+259
30%	20%	40%	90%	45%	25%	70%	60%

So much quality in the bull to lead off this group of 789 sons. He is without a doubt the squarest bull in the pen from end to end. Super attractive up front, he has an immense amount of muscle shape and expression over his top and back into his quarter. He's bold and genuine in his rib shape and all in neat moderate package. His dam, the 2327 cow has made a tremendous impact on our cowherd so it's no surprise that she raised this heater in her 14th year in production. He's has the epd profile of a heifer bull and the phenotype of a beef bull.



**14**

**TIMBER LINE EFFECTIVE 405**

AAA: 21439909 DOB: 03/18/25 Tattoo: 405

AB-LVS Capitalist 4507

DL Dually

McD Effective 789



Bear Mtn Miss Manor 9674

McD Performiss 238

Bear Mtn Miss Manor 4102

This lot 14 bull has been a stud since he was a baby. His ability to combine look and power and structural quality is truly impressive. He is so massive and stout constructed, square at the ground with a huge top. Front to back he is genuine and pulled apart in his center body but still deep and soft from the side. More impressive yet is how athletic and correct he is in his movement. We love when the cattle are this powerful but still come with some calving ease and female making quality. This bull's mother is a beautiful, moderate, huge bodied cow with one of the best udder and feet in our cowherd. She has a few daughters in production and they are following in her footsteps. Whether you're making your own replacement females or selling calves by the pound, you'll love the ones sired by lot 14. He needs to be on your short list!

ACT BW	ADJ WW	ADJ YW	FRAME	ACT SC	DAMS PROD		
81	786	1328	5.5	39.9	4/103		
CED	BW	WW	YW	SC	M	CEM	DOC
+11	+0.5	+74	+125	+1.22	+22	+11	+26
15%	35%	35%	45%	30%	80%	25%	20%
CLAW	ANGLE	FL	MARB	REA	\$M	\$B	\$C
+.46	+.47	+1.13	+.90	+.24	+63	+145	+251
40%	50%	20%	35%	95%	60%	60%	65%



**McD Effective 789**

After a trip through Matt Brown's cows we decided to sample some of 789. Matt's females were near perfectly made with good feet and good udders. We've been so impressed with our Effective calves. Ultra high quality, powerful, and made right!

**15****TIMBER LINE EFFECTIVE 355**

AAA: 21439907 DOB: 03/18/25 Tattoo: 355

AB-LVS Capitalist 4507

Timber Line Felix II 205

**McD Effective 789** X **TLR Milly 8-81**

McD Performiss 238

TLR Milly H63



ACT BW	ADJ WW	ADJ YW	FRAME	ACT SC	DAMS PROD		
85	742	1270	5.5	36.9	6/103		
CED	BW	WW	YW	SC	M	CEM	DOC
+7	+1.3	+69	+124	+87	+25	+5	+19
45%	50%	50%	45%	55%	60%	80%	55%
CLAW	ANGLE	FL	MARB	REA	\$M	\$B	\$C
+51	+46	+1.05	+65	+55	+51	+170	+271
60%	45%	60%	60%	70%	85%	35%	50%

The quality of these 789 bulls is top notch! This lot 15 is a super complete, no holes kind of bull. More than enough muscle with lots of shape and expression. He is one that has a true performance bull look to him. He's made well and sound, I think you'll really like him.

**16****TIMBER LINE EFFECTIVE 365**

AAA: 21439908 DOB: 03/18/25 Tattoo: 365

AB-LVS Capitalist 4507

Timber Line Felix 532

**McD Effective 789** X **TLR Milly 8-31**

McD Performiss 238

TLR Milly W41



ACT BW	ADJ WW	ADJ YW	FRAME	ACT SC	DAMS PROD		
79	728	1221	5.5	39.9	6/97		
CED	BW	WW	YW	SC	M	CEM	DOC
+3	+1.7	+76	+136	+71	+26	+1	+26
75%	60%	30%	25%	65%	50%	95%	20%
CLAW	ANGLE	FL	MARB	REA	\$M	\$B	\$C
+44	+36	+1	+56	+99	+60	+168	+278
35%	10%	85%	70%	20%	65%	35%	40%

There is so much to love about this lot 16. Arguably, my favorite phenotype bull in the sale. He's fresh and attractive through his head and neck then explosive in his center body, stout and square from behind. With all his power and mass he is incredibly athletic.

**17****TIMBER LINE EFFECTIVE 555**

AAA: 21439910 DOB: 03/23/25 Tattoo: 555

AB-LVS Capitalist 4507

Timber Line Felix 532

**McD Effective 789** X **TLR Luna CJ 8-23**

McD Performiss 238

TLR Luna CJ 2-05



ACT BW	ADJ WW	ADJ YW	FRAME	ACT SC	DAMS PROD		
96	783	1253	5	36.1	6/100		
CED	BW	WW	YW	SC	M	CEM	DOC
+2	+3.8	+71	+119	+94	+23	-5	+25
85%	95%	45%	55%	50%	75%	95%	25%
CLAW	ANGLE	FL	MARB	REA	\$M	\$B	\$C
+39	+36	+1.08	+41	+66	+58	+143	+243
15%	10%	45%	85%	55%	70%	65%	70%

Lot 17 is moderate and smooth shouldered with extra length of body and plenty of muscle expression. He's out of an attractive Felix daughter who is a "no holes" type of cow.



**HA Showbiz L543**

We purchased Showbiz from Dave Hinman in 2024. We fell in love with his phenotype, bone and substance. This is his first calf crop and he is off to a great start.

**18**

**TIMBER LINE SHOWBIZ 285**

AAA: 21422601 DOB: 03/14/25 Tattoo: 285

Schiefelbein Showbiz151

Vermilion Sirloin

**HA Showbiz L543** X **TLR Blackcap Lady CJ 7-19**

HA Lass J656

HA Blackcap Lady 2327



ACT BW	ADJ WW	ADJ YW	FRAME	ACT SC	DAMS PROD		
76	698	1247	5.5	37.8	9/99		
CED	BW	WW	YW	SC	M	CEM	DOC
+15	-1.2	+67	+117	+64	+29	+7	+19
3%	10%	55%	60%	70%	30%	65%	55%
CLAW	ANGLE	FL	MARB	REA	\$M	\$B	\$C
+43	+43	+1.14	+29	+95	+66	+139	+246
30%	30%	15%	90%	25%	50%	70%	70%

Big time heifer bull with generations of cow power behind him! This lot 18 bull is one of the most attractive bulls in the offering. His head and neck come high and correct out of the top of his shoulder and he transitions back deep bodied while balancing up well while being good at the ground. There is an impressive amount of bull here to be this calving ease. I think you'll like him.

**19**

**TIMBER LINE SHOWBIZ 125**

AAA: 21422600 DOB: 03/02/25 Tattoo: 125

Schiefelbein Showbiz151

Westra Blackout H06

**HA Showbiz L543** X **TLR Bandolier D72**

HA Lass J656

TLR Banolier 2-58



ACT BW	ADJ WW	ADJ YW	FRAME	ACT SC	DAMS PROD		
84	766	1209	5.5	40.3	1/105		
CED	BW	WW	YW	SC	M	CEM	DOC
+7	+1.0	+63	+118	+96	+26	+7	+21
45%	45%	70%	55%	45%	50%	65%	45%
CLAW	ANGLE	FL	MARB	REA	\$M	\$B	\$C
+52	+49	+1.07	+26	+59	+69	+123	+229
65%	60%	50%	95%	65%	45%	85%	85%

Here's a Showbiz that brings some extra performance to the table. He's a rugged made bull with plenty of muscle that is big topped and expressive with a deep and soft enough rib cage. Out of a first calf heifer that weaned him at a 105 ratio, we like him!



**20**

**TIMBER LINE SHOWBIZ 685**

AAA: 21506757 DOB: 03/28/25 Tattoo: 685

Schiefelbein Showbiz151

LD Capitalist 316

**HA Showbiz L543**

**TLR Eliminatress C24**

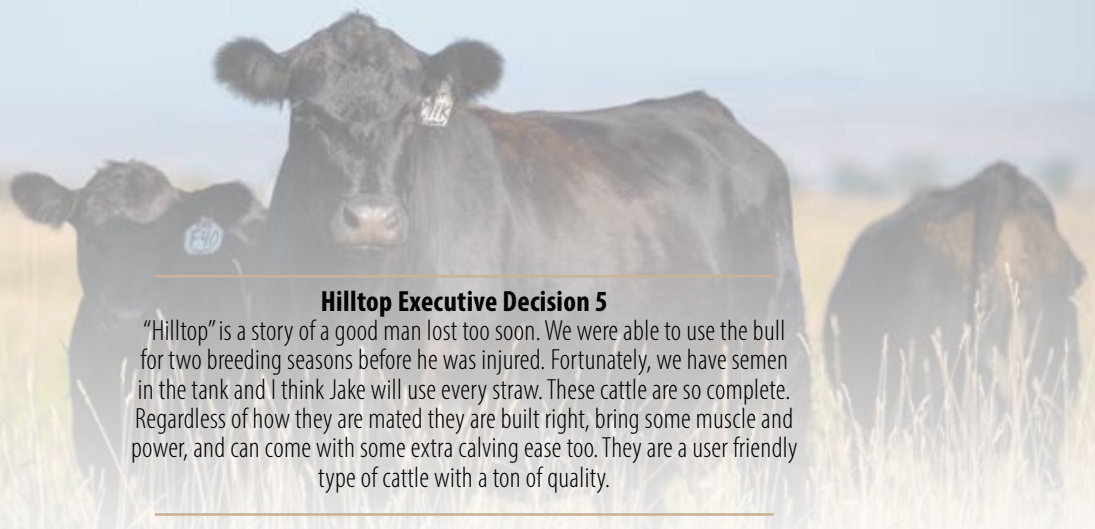
HA Lass J656

TLR Eliminatress 051



ACT BW	ADJ WW	ADJ YW	FRAME	ACT SC	DAMS PROD		
85	751	1237	4.5	39	1/103		
CED	BW	WW	YW	SC	M	CEM	DOC
+6	+1.4	+77	+131	+76	+25	+4	+10
55%	55%	30%	35%	60%	60%	85%	90%
CLAW	ANGLE	FL	MARB	REA	\$M	\$B	\$C
+36	+44	+1.11	+27	+89	+59	+132	+230
10%	35%	30%	95%	30%	70%	75%	80%

So much good in the lot 20 bull! He's stout and powerful off of both end of his skeleton. Square at the ground with lots of expression and shape up high. He's an absolute truck; definitely a cow bull but a moderate, long spined one that will add pounds and shape to a calf crop.



### Hilltop Executive Decision 5

"Hilltop" is a story of a good man lost too soon. We were able to use the bull for two breeding seasons before he was injured. Fortunately, we have semen in the tank and I think Jake will use every straw. These cattle are so complete. Regardless of how they are mated they are built right, bring some muscle and power, and can come with some extra calving ease too. They are a user friendly type of cattle with a ton of quality.

**21**

### TIMBER LINE HILLTOP 655

AAA: 21422594 DOB: 03/27/25 Tattoo: 655

PM Executive Decision 5'17

Connealy King Air

**Hilltop Executive Decision 5** X **TLR Eliminatress B11**

Pine Coulee Elluna D12

TLR Eliminatress 051



ACT BW	ADJ WW	ADJ YW	FRAME	ACT SC	DAMS PROD		
70	703	1137	4.5	35.6	2/99		
CED	BW	WW	YW	SC	M	CEM	DOC
+13	-1.6	+65	+105	+77	+28	+11	+16
10%	10%	60%	80%	60%	40%	25%	70%
CLAW	ANGLE	FL	MARB	REA	\$M	\$B	\$C
+.52	+.52	+1.1	+.28	+.99	+64	+109	+205
65%	75%	35%	90%	20%	55%	95%	95%

This moderate made, big testicled bull reads with a big time heifer bull EPD profile but doesn't skimp on power. He is stout and attractive with extra rib and softness. His mother is Jake's pride and joy out of our 051 donor. We like him a lot, heifer bull buyers look here!

**22**

### TIMBER LINE HILLTOP 265

AAA: 21422592 DOB: 03/14/25 Tattoo: 265

PM Executive Decision 5'17

KR DINERO

**Hilltop Executive Decision 5** X **TLR Ellen KL 9-27**

Pine Coulee Elluna D12

TLR Ellen KL 3-37



ACT BW	ADJ WW	ADJ YW	FRAME	ACT SC	DAMS PROD		
80	739	1214	6	39.8	5/96		
CED	BW	WW	YW	SC	M	CEM	DOC
+5	+1.3	+75	+129	+2.03	+40	+11	+20
60%	50%	35%	40%	3%	1%	25%	50%
CLAW	ANGLE	FL	MARB	REA	\$M	\$B	\$C
+.44	+.50	+1.17	+.13	+.61	+63	+128	+229
35%	65%	10%	95%	65%	60%	80%	85%

Here's one of the larger framed Hilltops in the offering. This lot 22 bull is really correct in the way his head and neck tie high into a smooth shouldered and transitions that back into a dimensional center body. He's an attractive bull that's sound structured and athletic as he goes.

**23****TIMBER LINE 455**

COMMERICAL DOB: 03/20/25 Tattoo: 455

PM Executive Decision 5'17

Vermilion Optimist

**Hilltop Executive Decision 5** X **TLR C07**

Pine Coulee Elluna D12

TLR Miss Eileenmere A86

ACT BW	ADJ WW	ADJ YW	FRAME	ACT SC	DAMS PROD		
77	719	1183	5.5	38.7	2/107		
CED	BW	WW	YW	SC	M	CEM	DOC
%	%	%	%	%	%	%	%
CLAW	ANGLE	FL	MARB	REA	\$M	\$B	\$C
		+					
%	%	%	%	%	%	%	%

This bull is a really solid Hilltop son who is good looking and expressive. His mother is a really attractive cow that's off to a good start raising 2 at 107.

**25****TIMBER LINE HILLTOP 695**

AAA: 21422595 DOB: 03/28/25 Tattoo: 695

PM Executive Decision 5'17

RR BIG TIME 9001

**Hilltop Executive Decision 5** X **TLR Jetta CJ B29**

Pine Coulee Elluna D12

TLR Jetta CJ 6-35

ACT BW	ADJ WW	ADJ YW	FRAME	ACT SC	DAMS PROD		
77	645	1077	5.5	37	3/92		
CED	BW	WW	YW	SC	M	CEM	DOC
+2	+1.7	+68	+113	+97	+21	+5	+22
85%	60%	55%	65%	45%	85%	80%	40%
CLAW	ANGLE	FL	MARB	REA	\$M	\$B	\$C
+60	+39	+1.03	-.14	+71	+60	+84	+169
90%	15%	70%	95%	50%	65%	95%	95%

This Hilltop son comes in a moderate and attractive package. He's long necked, smooth shouldered and lines out right from the side. He's got more than adequate muscle and rib. There's a lot to like here!

**24****TIMBER LINE HILLTOP 615**

AAA: 21422593 DOB: 03/26/25 Tattoo: 615

PM Executive Decision 5'17

SCC Paycheck 23F

**Hilltop Executive Decision 5** X **TLR Milly B25**

Pine Coulee Elluna D12

TLR Milly 8-31



ACT BW	ADJ WW	ADJ YW	FRAME	ACT SC	DAMS PROD		
80	741	1309	5.5	39.1	3/107		
CED	BW	WW	YW	SC	M	CEM	DOC
+5	+1.8	+80	+133	+1.29	+33	+6	+21
60%	65%	20%	30%	25%	15%	70%	45%
CLAW	ANGLE	FL	MARB	REA	\$M	\$B	\$C
+.49	+.58	+1.14	+.20	+.83	+64	+128	+230
55%	95%	15%	95%	35%	55%	80%	80%

**TLR Milly B25**

The lot 24 bull is a 3/4 brother to our lot 1 bull from 2025 that sold to Sitz Angus. He has the look of Hilltop with the power and performance of the Paychecks. I love his shape; he's so genuine in his center body with a soft and correct turn into his flank. He's got more than enough muscle and expression while being square and correct at the ground in motion. There's a lot of quality in this individual with cow power in his pedigree. His young mother is a good looking cow that's raised 3 at 107.



**26****TIMBER LINE HILLTOP 795**

AAA: 21422597 DOB: 04/03/25 Tattoo: 795

PM Executive Decision 5'17

FF Conclusion F83

**Hilltop Executive Decision 5** X **TLR Blythe LYN A15**

Pine Coulee Elluna D12

TLR Blythe LYN O8

ACT BW	ADJ WW	ADJ YW	FRAME	ACT SC	DAMS PROD		
83	786	1229	6.5	38.6	4/108		
CED	BW	WW	YW	SC	M	CEM	DOC
+0	+2.6	+86	+149	+1.42	+36	+8	+18
90%	80%	10%	15%	20%	5%	55%	60%
CLAW	ANGLE	FL	MARB	REA	\$M	\$B	\$C
+.48	+.42	+1.08	+.22	+1.09	+59	+137	+237
50%	25%	45%	95%	15%	70%	70%	75%

26 is an extra long spined and expressive bull that comes standard with the Hilltop look and build quality. With his stoutness, it's no surprise he ranks in the top 15% of the breed for WW and YW. His mother is a really complete cow that has raised an impressive 4 at 108.

**27****TIMBER LINE HILLTOP 825**

AAA: 21422598 DOB: 04/03/25 Tattoo: 825

PM Executive Decision 5'17

SCC Paycheck 23F

**Hilltop Executive Decision 5** X **TLR Elvinas Lady B60**

Pine Coulee Elluna D12

TLR Elvinas Lady 7-73

ACT BW	ADJ WW	ADJ YW	FRAME	ACT SC	DAMS PROD		
84	681	1188	5	36.8	3/92		
CED	BW	WW	YW	SC	M	CEM	DOC
+5	+1.4	+66	+120	+1.26	+30	+7	+19
60%	55%	60%	55%	30%	25%	65%	55%
CLAW	ANGLE	FL	MARB	REA	\$M	\$B	\$C
+.55	+.56	+1.02	+.20	+.87	+41	+121	+198
75%	90%	75%	95%	30%	95%	90%	95%

27 is one of the younger bulls in the sale, but no slouch in terms of quality! He's made really nice being good at the ground, and I really like how comfortable and correct he is in his lower joints. He's covers the basics of muscle, shape and dimension – his best days are ahead of him.

**28****TIMBER LINE HILLTOP 915**

AAA: 21422599 DOB: 04/05/25 Tattoo: 915

PM Executive Decision 5'17

PGC Forge

**Hilltop Executive Decision 5** X **TLR Rose B24**

Pine Coulee Elluna D12

SRS Rose 2256Z

ACT BW	ADJ WW	ADJ YW	FRAME	ACT SC	DAMS PROD		
94	747	1232	6	38.4	3/100		
CED	BW	WW	YW	SC	M	CEM	DOC
+1	+3.6	+85	+146	+1.45	+31	+6	+17
90%	95%	15%	15%	20%	20%	70%	65%
CLAW	ANGLE	FL	MARB	REA	\$M	\$B	\$C
+.47	+.50	+0.95	+.06	+.61	+41	+129	+208
45%	65%	95%	95%	65%	95%	80%	95%

With 28's added frame, length of body and capacity it's no surprise he ranks in the top 15% of the breed for WW and YW. He has an impressive amount of growth and visual performance for an April 5th calf.





**29**

**TIMBER LINE PAYLOAD 305**

AAA: 21512396 DOB: 03/15/25 Tattoo: 305

Basin Paycheck 5249 | Timber Line Felix 532  
**SCC Paycheck 23F** X **TLR Jetta CJ 9-19**  
 SCC Ms Witch 8D | TLR Jetta CJ 2-25

ACT BW	ADJ WW	ADJ YW	FRAME	ACT SC	DAMS PROD		
84	722	1256	5.5	35.9	5/98		
CED	BW	WW	YW	SC	M	CEM	DOC
-4	+4.0	+80	+138	+13	+27	+6	+28
95%	95%	20%	25%	95%	45%	70%	15%
CLAW	ANGLE	FL	MARB	REA	\$M	\$B	\$C
+.54	+.46	+1	+.36	+.60	+62	+132	+233
75%	45%	85%	85%	65%	60%	75%	80%

"Long as a well rope" This bull was in one of the pairs we chose to display on the Montana Angus Tour this last fall. He's a high performing, heavy muscled and masculine individual that's good on his feet. He is a growth oriented, performance driven type of bull out of a beautiful, moderate Felix bred dam. Those cattle have worked really well for us and that cow is a prime example of that.



TLR Jetta CJ 9-19

**30**

**TIMBER LINE PAYLOAD 315**

AAA: 21512395 DOB: 03/15/25 Tattoo: 315

Basin Paycheck 5249 | FF Conclusion F83  
**SCC Paycheck 23F** X **TLR Lass KL A26**  
 SCC Ms Witch 8D | PE Lass 450

ACT BW	ADJ WW	ADJ YW	FRAME	ACT SC	DAMS PROD		
79	689	1153	6	38	4/101		
CED	BW	WW	YW	SC	M	CEM	DOC
+5	+0.6	+62	+107	+98	+39	+11	+25
60%	35%	70%	75%	45%	2%	25%	25%
CLAW	ANGLE	FL	MARB	REA	\$M	\$B	\$C
+.40	+.46	+1.09	+.64	-.06	+73	+138	+252
20%	45%	40%	60%	95%	35%	70%	65%

We've used the Paycheck bull for several years because the quality and consistency of the calves he sires and this lot 30 is no exception. He's long bodied with plenty of muscle and shape. He'll make a nice set of steer calves.





**Kallie's Bulls**

Our neighbor and good friend Kallie Herrygers has been raising and selling bulls with us for the last 5 years. Her cattle have contributed an immense amount to our offering through out the years and we are proud to have her with us. She has 5 bulls in the offering this year, some of which out of one of the first females she bought from Jake long ago. We are grateful beyond measure for her friendship. Study these bulls, you'll be impressed!  
*Kallie Herrygers (406) 539-1778*

**31**

**KH THUNDER N53**

AAA: 21325526 DOB: 02/08/25 Tattoo: N53

Baldrige Kaboom K243 KCF |  
**Connealy Thunder**  
 Parka of Conanga 241

| Woodhill Foresight  
**Timber Line Erica H48**  
 | Cochangus Trojan Erica 91N

**32**

**KH THUNDER N57**

AAA: 21325527 DOB: 02/10/25 Tattoo: N57

Baldrige Kaboom K243 KCF |  
**Connealy Thunder**  
 Parka of Conanga 241

| Woodhill Foresight  
**Timber Line Erica H48**  
 | Cochangus Trojan Erica 91N

ACT BW	ADJ WW	ADJ YW	FRAME	ACT SC	DAMS PROD		
95	756	1235	6	39.5	/		
CED	BW	WW	YW	SC	M	CEM	DOC
-6	+2.9	+50	+92	+78	+29	+4	+24
95%	85%	95%	90%	60%	30%	85%	30%
CLAW	ANGLE	FL	MARB	REA	\$M	\$B	\$C
+54	+44	+1.01	+53	+37	+64	+135	+239
75%	35%	80%	75%	90%	55%	75%	75%

ACT BW	ADJ WW	ADJ YW	FRAME	ACT SC	DAMS PROD		
84	700	1145	5.5	41	/		
CED	BW	WW	YW	SC	M	CEM	DOC
+4	+1.3	+48	+84	+1.36	+23	+7	+25
70%	50%	95%	95%	25%	75%	65%	25%
CLAW	ANGLE	FL	MARB	REA	\$M	\$B	\$C
+56	+46	+1.02	+51	+0.07	+66	+117	+218
80%	45%	75%	75%	95%	50%	90%	90%

Here's a larger framed Thunder son out of one Kallie's longstanding Angus cows. I like this bull's added length of spine; he's stout made and square from behind with lots of muscle shape and expression.

There's a lot to like about this lot 32 bull. As he goes he's sound and comfortable in his joints, he's square at the ground and muscular and expressive up high. He has a genuine amount of rib shape, and comes in a practical, moderate frame.





**33**

**KH PROLIFIC N56**

AAA: 21325524 DOB: 02/11/25 Tattoo: N56

Ellingson Profound 8155 |

Oak Hollow 7709 of 1318 1118

**Ellingson Prolific** X **KH Athena 001**

EA Queen 8070 |

Timber Line Erica H48

ACT BW	ADJ WW	ADJ YW	FRAME	ACT SC	DAMS PROD		
87	734	1302	6.5	41	/		
CEW	BW	WW	YW	SC	M	CEM	DOC
+0	+2.3	+71	+120	+1.88	+17	+6	+21
90%	75%	45%	55%	5%	95%	70%	45%
CLAW	ANGLE	FL	MARB	REA	\$M	\$B	\$C
+24	+33	+0.96	+65	+55	+90	+156	+292
1%	3%	95%	60%	70%	10%	50%	30%

If you're looking for performance, power and a bull that will add pounds to a calf crop, here he is. This lot 33 is a stout made, ultra high performing, deep bodied and soft sided bull that smooth and correct as he goes.

**34**

**KH JET N54**

AAA: 21325521 DOB: 02/04/25 Tattoo: N54

Sitz Stellar 726D |

Timber Line Felix 532

**Montana Jet 1271** X **KH Erica J02**

Montana Joy 9330 |

KH Erica D10

ACT BW	ADJ WW	ADJ YW	FRAME	ACT SC	DAMS PROD		
77	696	1146	5.5	39	1/100		
CEW	BW	WW	YW	SC	M	CEM	DOC
+11	-1.7	+54	+95	+1.40	+32	+4	+17
15%	5%	90%	90%	20%	15%	85%	65%
CLAW	ANGLE	FL	MARB	REA	\$M	\$B	\$C
+48	+45	+1	+16	+62	+69	+110	+212
50%	40%	85%	95%	60%	45%	95%	90%

Lot 34 is a clean fronted, attractive Jet son who we like for his performance and dimension. He's deep bodied and soft sided with a good turn to his flank. He's a practical kind of bull that will sire an impressive set of steer calves.



**34**

**35****KH GRANT N52**

AAA: 21325528 DOB: 03/09/25 Tattoo: N52

Sitz Feat 729H

Coleman Charlo 0256

**Spring Cove Grant 200K**  
Spring Cove Carol 811**Coleman Donna 4356**  
Coleman Donna 714

ACT BW	ADJ WW	ADJ YW	FRAME	ACT SC	DAMS PROD		
84	694	1204	4	40	3/101		
CED	BW	WW	YW	SC	M	CEM	DOC
+6	+1.6	+69	+120	+1.68	+17	+8	+16
55%	60%	50%	55%	10%	95%	55%	70%
CLAW	ANGLE	FL	MARB	REA	\$M	\$B	\$C
+30	+38	+1.03	+91	+64	+101	+150	+296
3%	15%	70%	35%	60%	3%	55%	30%

Lot 35 is meat wagon. He is as stout as you can make one and absolutely loaded with muscle. From the side he is relaxed in the angle to his shoulder and ultra deep bodied with a correct turn back into his flank. He's moderate with added power and performance.

**38****TIMBER LINE BADLANDS 605**

AAA: 21525815 DOB: 03/25/25 Tattoo: 605

Ellingson Badlands 0285

Timber Line Mcginley 534

**Ellingson Badlands 3210**  
EA Blacklass 8029**TLR Anita Ellen KL 6-86**  
TLR Anita Ellenkl 2-64

ACT BW	ADJ WW	ADJ YW	FRAME	ACT SC	DAMS PROD		
96	827	1145	5.5	34.2	8/108		
CED	BW	WW	YW	SC	M	CEM	DOC
-4	+3.4	+70	+110	+50	+25	+4	+13
95%	90%	50%	70%	75%	60%	85%	80%
CLAW	ANGLE	FL	MARB	REA	\$M	\$B	\$C
+46	+40	+1.08	+36	+63	+54	+139	+234
40%	20%	45%	85%	60%	80%	70%	80%

Here's long spined, level hiped bull that's sleek and smooth about his shoulder and correct in his forerib.

**36****TIMBER LINE BENCHMARK 485**

AAA: 21487565 DOB: 03/22/25 Tattoo: 485

Mill Brae Benchmark 9016

Timber Line Rock Solid 289

**Timber Line Benchmark KH 32K**  
Montana Donna 9102**TLR Everelda Entense 3-36**  
TLR Everelda Entense 072

ACT BW	ADJ WW	ADJ YW	FRAME	ACT SC	DAMS PROD		
87	667	1102	5.5	34.4	11/97		
CED	BW	WW	YW	SC	M	CEM	DOC
+3	+2.4	+57	+98	+68	+26	+4	+16
75%	75%	80%	85%	65%	50%	85%	70%
CLAW	ANGLE	FL	MARB	REA	\$M	\$B	\$C
+39	+46	+1.14	+30	+49	+70	+113	+217
15%	45%	15%	90%	80%	45%	95%	90%

We didn't get very many of these Benchmark calves but we are looking forward to what he can offer. This bull is a sleek fronted and smooth shouldered, you like his added look from the side profile, he's deep bodied with a nice turn back to his flank.

**39****TIMBER LINE SKYLINE 25**

AAA: 21439896 DOB: 02/25/25 Tattoo: 25

Vermilion Spur E119

Westra Blackout H06

**Heiken Broadview**  
JCH BHA Karen 7815**TLR Somas Lady D69**  
TLR Somas Lady 5-47

ACT BW	ADJ WW	ADJ YW	FRAME	ACT SC	DAMS PROD		
82	713	1014	5	36.6	1/98		
CED	BW	WW	YW	SC	M	CEM	DOC
+11	-0.9	+62	+108	+77	+30	+13	+21
15%	15%	70%	75%	60%	25%	10%	45%
CLAW	ANGLE	FL	MARB	REA	\$M	\$B	\$C
+51	+55	+1.09	+66	+74	+58	+159	+264
60%	90%	40%	60%	45%	70%	45%	55%

Here's a heifer bull that's built right and moves well out of a really promising first calf heifer. We really like his added depth of rib and softness to complement his moderate frame size.

**37****TIMBER LINE BENCHMARK 725**

AAA: 21487564 DOB: 03/30/25 Tattoo: 725

Mill Brae Benchmark 9016

FF Correct Z58

**Timber Line Benchmark KH 32K**  
Montana Donna 9102**TLR Everelda Entense CJ 5-12**  
TLR Everelda Entense 3-36

ACT BW	ADJ WW	ADJ YW	FRAME	ACT SC	DAMS PROD		
77	580	1071	4.5	33.5	9/97		
CED	BW	WW	YW	SC	M	CEM	DOC
+7	+0.6	+50	+90	+47	+29	+7	+14
45%	35%	95%	90%	80%	30%	65%	75%
CLAW	ANGLE	FL	MARB	REA	\$M	\$B	\$C
+43	+45	+1.14	+31	+40	+67	+105	+203
30%	40%	15%	90%	85%	50%	95%	95%

This Benchmark is moderate and attractive with extra look and levelness. He's smooth shouldered, clean necked and I think he has the right kind of rib shape and turn to his flank.



**40****TIMBER LINE SKYLINE 135**

AAA: 21439897 DOB: 03/02/25 Tattoo: 135

Vermilion Spur E119

Timber Line Felix 259

**Heiken Broadview** X **TLR Milly D42**

JCH BHA Karen 7815

TLR Milly 8-56



ACT BW	ADJ WW	ADJ YW	FRAME	ACT SC	DAMS PROD		
90	759	1191	5.5	37.8	1/104		
CED	BW	WW	YW	SC	M	CEM	DOC
-2	+2.9	+73	+125	+1.65	+31	+1	-3
95%	85%	40%	45%	10%	20%	95%	95%
CLAW	ANGLE	FL	MARB	REA	\$M	\$B	\$C
+45	+47	+1.05	+78	+97	+61	+190	+307
35%	50%	60%	45%	20%	65%	20%	25%

Here's a nice Broadview son that offers some extra muscle expression and length of body.

**41****TIMBER LINE HIGH ROAD 415**

AAA: 21439911 DOB: 03/19/25 Tattoo: 415

Deer Valley Growth Fund

Timber Line Black Gold 58

**Hoffman High Road** X **TLR Milly A43**

HA Rito Lady 3839

TLR Milly 8-56



ACT BW	ADJ WW	ADJ YW	FRAME	ACT SC	DAMS PROD		
80	779	1280	5.5	41.1	4/107		
CED	BW	WW	YW	SC	M	CEM	DOC
+6	+0.3	+70	+123	+78	+36	+12	+33
55%	30%	50%	50%	60%	5%	15%	2%
CLAW	ANGLE	FL	MARB	REA	\$M	\$B	\$C
+37	+47	+1.13	+56	+81	+105	+134	+279
15%	50%	20%	70%	40%	2%	75%	40%

I really like the look of this High Road son. 41 is smooth shouldered and attractive up front with extra body and levelness out through his hip. He is a big testicled bull that comes with extra stoutness and shape from behind.

**42****TIMBER LINE HIGH ROAD 535**

AAA: 21439912 DOB: 03/22/25 Tattoo: 535

Deer Valley Growth Fund

Timber Line Felix 532

**Hoffman High Road** X **TLR Miss Eileenmere 4-73**

HA Rito Lady 3839

TLR Miss Eileenmere 014



ACT BW	ADJ WW	ADJ YW	FRAME	ACT SC	DAMS PROD		
90	677	1175	5.5	38.7	10/99		
CED	BW	WW	YW	SC	M	CEM	DOC
+9	+0.5	+65	+122	+46	+21	+16	+15
30%	35%	60%	50%	80%	85%	1%	75%
CLAW	ANGLE	FL	MARB	REA	\$M	\$B	\$C
+51	+43	+1.1	+49	+74	+71	+152	+268
60%	30%	35%	75%	45%	40%	55%	50%

I like the added bone and stoutness of feature this bull offers while still being sound structured and good jointed. As a bonus, he's a later maturing but who still has extra shape and dimension. Backed by generations of productive females I think this bull's best days are ahead of him.

## 43 **TIMBER LINE HOLLYWOOD 1095**

AAA: 21506761 DOB: 04/20/25 Tattoo: 1095

HA Outside Two 7891

Timber Line Rock Solid 289

**HT Outside Two 0288** X **TLR Miss Eileenmere 2-39**

HA Blackcap Lady 0855

TLR Miss Eileenmere K38



ACT BW	ADJ WW	ADJ YW	FRAME	ACT SC	DAMS PROD		
84	686	1158	5.5	34.5	12/99		
CED	BW	WW	YW	SC	M	CEM	DOC
+5	+2.2	+55	+93	+55	+26	+0	+8
60%	70%	85%	90%	75%	50%	95%	95%
CLAW	ANGLE	FL	MARB	REA	\$M	\$B	\$C
+51	+57	+1.11	+1.14	+54	+56	+102	+188
60%	95%	30%	95%	70%	75%	95%	95%

Youngest bull in the offering and he's loaded with good! 43 is a level made and attractive bull that has added bone and substance. He's carrying an impressive amount of muscle and dimension especially considering his age, but I think his real advantage is his build with the quality of his hind leg and how athletic he is.

## 44 **TIMBER LINE JUSTIFIED 35**

AAA: 21439898 DOB: 02/25/25 Tattoo: 35

Connealy Judgment

Westra Blackout H06

**KG Justified 3023** X **TLR Bluebeard Annabel D50**

KG Miss Magic 1443

TLR Bluebeard Annabel 8-58



ACT BW	ADJ WW	ADJ YW	FRAME	ACT SC	DAMS PROD		
80	735	1039	4.5	33.6	1/101		
CED	BW	WW	YW	SC	M	CEM	DOC
+8	-0.8	+59	+98	+1.05	+37	+11	+16
35%	15%	80%	85%	40%	3%	25%	70%
CLAW	ANGLE	FL	MARB	REA	\$M	\$B	\$C
+39	+39	+1.03	+74	+58	+97	+145	+285
15%	15%	70%	50%	65%	4%	60%	35%

Heifer bull out of the popular Justified sire. This lot 44 bull is moderate framed and comes with some extra look and structural integrity.

## 45 **TIMBER LINE JUSTIFIED 115**

AAA: 21439899 DOB: 03/02/25 Tattoo: 115

Connealy Judgment

Sitz Prodigy 12000

**KG Justified 3023** X **TLR Blackcap Lady CJ D33**

KG Miss Magic 1443

HA Blackcap Lady 2327



ACT BW	ADJ WW	ADJ YW	FRAME	ACT SC	DAMS PROD		
80	680	1102	4.5	33.8	1/94		
CED	BW	WW	YW	SC	M	CEM	DOC
+11	-1.7	+70	+119	+66	+30	+9	+22
15%	5%	50%	55%	70%	25%	40%	40%
CLAW	ANGLE	FL	MARB	REA	\$M	\$B	\$C
+48	+39	+1.14	+47	+42	+93	+137	+271
50%	15%	15%	80%	85%	10%	70%	50%

This is my choice of the Justifieds. For one that reads that well in his CED and BW, I think this bull still comes with plenty of punch. He's moderate in his frame and square from behind with some real shape and dimension in his center body. His pedigree is loaded with cow power - a set of replacement females out of this bull would make your neighbors jealous.

# 46 TIMBER LINE SUMMATION 575

AAA: 21506756 DOB: 03/24/25 Tattoo: 575

FF Conclusion F83

Vermilion Privilege C142

Timber Line Summation 371 X FF Shoshone JF E224  
TLR Banolier 2-58 | FF Shoshone X5

ACT BW	ADJ WW	ADJ YW	FRAME	ACT SC	DAMS PROD		
90	743	1039	5.5	38.1	8/102		
CED	BW	WW	YW	SC	M	CEM	DOC
-5	+3.3	+57	+91	+1.27	+32	-8	+21
95%	90%	80%	90%	30%	15%	95%	45%
CLAW	ANGLE	FL	MARB	REA	\$M	\$B	\$C
+45	+37	+1.09	+49	+75	+77	+104	+212
35%	10%	40%	75%	45%	30%	95%	90%

The 224 cow never fails to make them fancy! I really like the added look and presence of this lot 46. His head and neck tie high and correct out of the top of his shoulder, he has plenty of depth of rib and softness with a nice turn back into his flank. He's a moderate, level made bull that will be fun to see come sale day.

# 48 TIMBER LINE LIGHTS OUT 975

AAA: 21506759 DOB: 04/07/25 Tattoo: 975

Jindra Blackout

Werner EA Motivation 2031

Westra Blackout H06 X TLR Jetta CJ 8-03  
Westra Hazel 901 | TLR Jetta CJ 6-35

ACT BW	ADJ WW	ADJ YW	FRAME	ACT SC	DAMS PROD		
	763	1241	6	35.5	7/105		
CED	BW	WW	YW	SC	M	CEM	DOC
-2	+5.3	+78	+147	+17	+28	+9	+20
95%	95%	25%	15%	90%	40%	40%	50%
CLAW	ANGLE	FL	MARB	REA	\$M	\$B	\$C
+50	+33	+1.05	+56	+66	+52	+156	+254
60%	3%	60%	70%	55%	85%	50%	65%

I really like this young Blackout son; he has such a cool look! He is as athletic and free moving as any bull in the offering and his added bone and substance make his levelness and quality from the side that much more attractive. I think the structural quality of this bull shouldn't be over looked.

# 47 TIMBER LINE LIGHTS OUT 735

AAA: 21506758 DOB: 03/30/25 Tattoo: 735

Jindra Blackout

Connealy Spur

Westra Blackout H06 X TLR Bandolier 931  
Westra Hazel 901 | TLR Bandolier 2-58

ACT BW	ADJ WW	ADJ YW	FRAME	ACT SC	DAMS PROD		
90	695				4/96		
CED	BW	WW	YW	SC	M	CEM	DOC
+5	+2.5	+66	+121	+99	+35	+6	+32
60%	80%	60%	50%	45%	10%	70%	3%
CLAW	ANGLE	FL	MARB	REA	\$M	\$B	\$C
+58	+45	+1.16	+68	+78	+93	+144	+280
85%	40%	10%	55%	40%	10%	65%	40%

The lot 47 bull is really complete. He's sound, big bodied, has more than enough muscle and shape. He's a larger framed, higher performing bull that has an impressive WDA.

# 49 COMMERCIAL TIMBER LINE 465

DOB: 03/21/25 Tattoo: 465

SCC Paycheck 23F

TLR Bandolier D61  
TLR Bandolier 5-41

ACT BW	ADJ WW	ADJ YW	FRAME	ACT SC	DAMS PROD		
85	717	1165	5.5	36.4	1/99		
CED	BW	WW	YW	SC	M	CEM	DOC
%	%	%	%	%	%	%	%
CLAW	ANGLE	FL	MARB	REA	\$M	\$B	\$C
		+					
%	%	%	%	%	%	%	%

Here's a long bodied, well balanced bull that comes with more than enough muscle and power. He's deep and soft in his rib cage; really a practical made kind of bull. He's a promising start for his first calf mother. These younger bulls were from multi sire groups that did not get DNA in time for sale day, they will sell as commercials.



**50**

**TIMBER LINE 675**

COMMERICAL DOB: 03/27/25 Tattoo: 675

Connealy King Air  
 X **TLR Eileenmere Bonny D40**  
 TLR Eileenmere Bonny 7-50



ACT BW	ADJ WW	ADJ YW	FRAME	ACT SC	DAMS PROD		
71	701	1138	4.5	38.5	1/96		
CED	BW	WW	YW	SC	M	CEM	DOC
%	%	%	%	%	%	%	%
CLAW	ANGLE	FL	MARB	REA	\$M	\$B	\$C
		+					
%	%	%	%	%	%	%	%

The lot 50 bull is an intriguing mix of look and quality with shape and muscle expression. He's one of the younger bulls in the offering but I wouldn't hold it against him. These younger bulls were from multi sire groups that did not get DNA in time for sale day, they will sell as commercials.

**51**

**TIMBER LINE 955**

COMMERICAL DOB: 04/06/25 Tattoo: 955

Timber Line Last Call 15  
 X **TLR Everelda Entense CJ 9-68**  
 TLR Everelda Entense CJ 1-02

**53**

**TIMBER LINE HOLLYWOOD 905**

AAA: 21506760 DOB: 04/05/25 Tattoo: 905

HA Outside Two 7891 | KG Logic 5601  
 HT Outside Two 0288 X **TLR Bluebeard Annabel 8-58**  
 HA Blackcap Lady 0855 | TLR Bluebeard Annabel 5-85

ACT BW	ADJ WW	ADJ YW	FRAME	ACT SC	DAMS PROD		
82	707	1102	6	37.5	4/91		
CED	BW	WW	YW	SC	M	CEM	DOC
%	%	%	%	%	%	%	%
CLAW	ANGLE	FL	MARB	REA	\$M	\$B	\$C
		+					
%	%	%	%	%	%	%	%

ACT BW	ADJ WW	ADJ YW	FRAME	ACT SC	DAMS PROD		
89	796	1262	6	35.5	6/110		
CED	BW	WW	YW	SC	M	CEM	DOC
+7	+0.6	+69	+124	+.84	+42	+8	+23
45%	35%	50%	45%	55%	1%	55%	35%
CLAW	ANGLE	FL	MARB	REA	\$M	\$B	\$C
+.63	+.60	+1.16	+.44	+.37	+75	+134	+249
95%	95%	10%	80%	90%	30%	75%	65%

Lot 51 is a good young bull who we like for the amount of muscle shape and expression he has. He's a big testicled bull that's gets out and moves well. These younger bulls were from multi sire groups that did not get DNA in time for sale day, they will sell as commercials.

It's a shame we only have a couple of these Hollywood's. I really like 90's bone and foot; he's made right being square at the ground but pulled apart up high. He's got the depth of body and capacity that comes with his type of performance. For being one of the youngest bulls in the offering his performance and WDA are impressive!

**52**

**TIMBER LINE 1005**

COMMERICAL DOB: 04/11/25 Tattoo: 1005

KG Alliance 8196  
 X **TLR Bande Evergreen 4-51**  
 TLR Bande Evergreen G41

ACT BW	ADJ WW	ADJ YW	FRAME	ACT SC	DAMS PROD		
78	747	1219	6.5	35.9	10/105		
CED	BW	WW	YW	SC	M	CEM	DOC
%	%	%	%	%	%	%	%
CLAW	ANGLE	FL	MARB	REA	\$M	\$B	\$C
		+					
%	%	%	%	%	%	%	%

Lot 52 is a larger framed, deep sided individual out of one of Jake's favorite old cows. She ended her career with this guy raising 10 at 105. These younger bulls were from multi sire groups that did not get DNA in time for sale day, they will sell as commercials.







to you!

RANCH

Photo



**3689 FLATHEAD PASS ROAD  
BELGRADE, MONTANA 59714**



**TIMBERLINEANGUS.COM**